

NOTES(ノート)

- please prevent usb port from being water in-flowed in case of short circuit.
请防止USB端口进水，以免发生短路。
USB端子部に水などの液体や異物が入らないようにしてください。
- for any damage of the product,turn to professional assist from your nearest service center.be sure not to detach the device yourself.
如果产品有任何损坏，请向您最近的服务中心寻求专业帮助。
请向您最近的服务中心寻求专业帮助。请注意不要自行拆卸设备。
故障の場合はプロにご相談ください。本製品をご自分で修理・分解・改造しないでください。
- do not expose this product undersunshine, also avoid dropping hitting orthrowing the product.
请勿将本产品暴露在阳光下。也避免掉落击打或抛掷产品。
直射日光が当たらない場所に置いてください。落ちたり、衝撃を与えたりしないでください。
- do not use chemical reagents on the product,and put it away from sharp object.
不要在产品上使用化学试剂，并将其放在远离尖锐物体的地方。
鋭いもの、水、化学薬品などは使用しないでください。
- please do not put the product in a extreme high temperature place or into fire
请不要将产品放在极端高温的地方或投入火中
高温となるところには保管しないでください。

Multi-Port Wireless Charging
USB Charging Station

多端口无线充电USB充电站

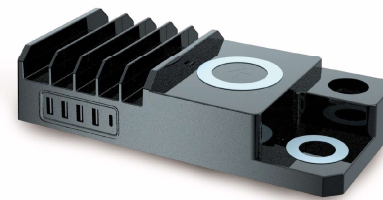
多ポートUSB+無線充電ステーション

Universal Charging Station
通用充电站

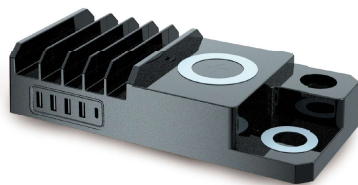
ユニバーサル充電ステーション

Organizer your devices and cables,makes the desktop clean and tidy
组织你的设备和电缆，使桌面干净和整洁。
デバイスとケーブルをきれいに整理し、デスク周りをすっきりさせる。

K58



User Manual
用户手册
ユーザーマニュアル



Product introduction/产品介绍/製品紹介

- This product is a multi-function portable charger designed for mobile phone/AirPods/Watch/iPad and so on.
本产品是一款多功能便携式充电器，专为手机/AirPods/iWatch/iPad 等。
本製品は、スマホ、AirPods、iWatch、iPad等の充電器です。
- For protect yourself benefit and extend the charger's life please read carefully the guide before use.
为了保护自己的利益，延长充电器的使用寿命，请在使用前仔细阅读指南。
ユーザーマニュアルをご確認のうえ本製品をご使用いただけますようお願い申し上げます。

PRODUCT INFORMATION/产品信息/製品情報



1

- 1 User Manual/用户手册/ユーザーマニュアル
- 2 Wireless charging USB charging station
无线充电 USB 充电站
(ワイヤレス充電USB充電ステーション)
- 3 Power Cable/电源线/電源ケーブル



2



3

Model/型号/モデル	K58
Type-c Output/Type-c输出/type-c出力	20W
2 QC3.0 Output/2个QC3.0 输出/ 2つのQC3.0出力	18W
2 USB ports/2个 USB 端口 2つのUSBポート	5V-2.4A(Max)
Product weight/产品重量/製品の重量	519G
Fast wireless charging/无线快速充电/ 急速なワイヤレス充電	15W-7.5W-10W-5W
iWatch Output/iWatch输出/iWatch出力	3W
Earphone Output/耳机输出/イヤホン出力	3W
Input voltage and current/输入电压和电流 (入力電圧と電流)	100-240/1A

- With smart IC installed,Each port intelligently identifies your device and seeks to maximize its charging speed.
安装智能IC。每个端口智能识别您的设备并寻求最大限度地提高其充电速度。
内蔵されているスマートICよりデバイスを識別し、充電スピードを最適化します。
- It is able to charge up to 8 devices at one time.
一次最多可为8台设备充电。
最大8つのデバイスを同時に充電可能。
- Built-in intelligent IC chip fuse.
内置智能IC芯片保险丝。
高性能のICチップ搭載



FCC WARNING

This device complies with part 15 of the FCC Rules. Operation is subject to the following two conditions: (1) this device may not cause harmful interference, and (2) this device must accept any interference received, including interference that may cause undesired operation.

Any changes or modifications not expressly approved by the party responsible for compliance could void the user's authority to operate the equipment.

NOTE: This equipment has been tested and found to comply with the limits for a Class B digital device, pursuant to Part 15 of the FCC Rules. These limits are designed to provide reasonable protection against harmful interference in a residential installation. This equipment generates, uses and can radiate radio frequency energy and, if not installed and used in accordance with the instructions, may cause harmful interference to radio communications. However, there is no guarantee that interference will not occur in a particular installation.

If this equipment does cause harmful interference to radio or television reception, which can be determined by turning the equipment off and on, the user is encouraged to try to correct the interference by one or more of the following measures:

- Reorient or relocate the receiving antenna.
- Increase the separation between the equipment and receiver.
- Connect the equipment into an outlet on a circuit different from that to which the receiver is connected.
- Consult the dealer or an experienced radio/TV technician for help.

To maintain compliance with FCC's RF Exposure guidelines, This equipment should be installed and operated with minimum distance between 20cm the radiator your body: Use only the supplied antenna.