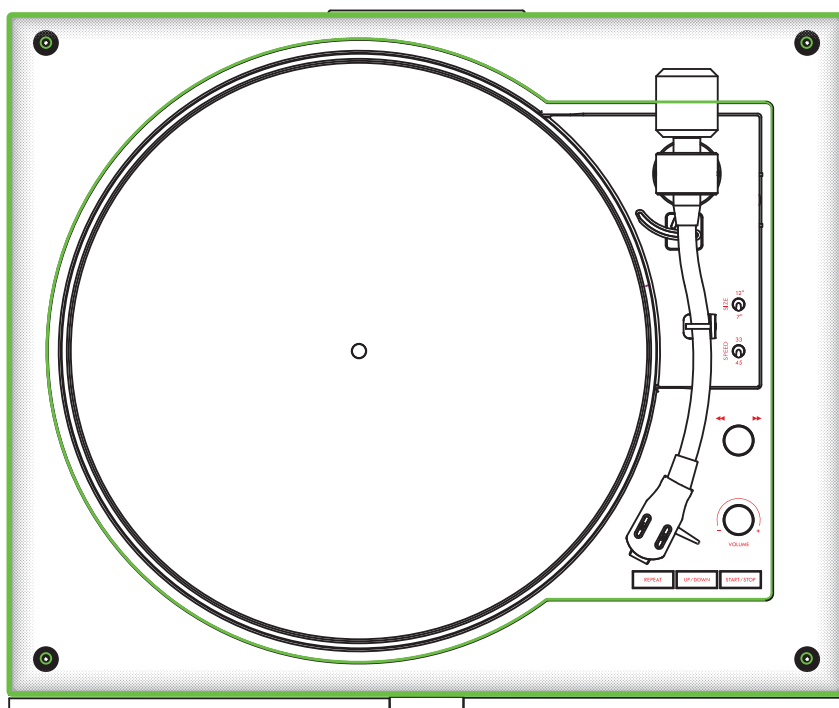




## TURNTABLE AT02



## Instruction Manual

## Introduction

Thank you for purchasing the 1byone Turntable.

This instruction manual contains important information about its safety, usage and disposal.

Use the product as described and keep this manual for future reference.

If you sell this turntable or pass it on, please also give this manual to the new owner.

## Safety Instruction

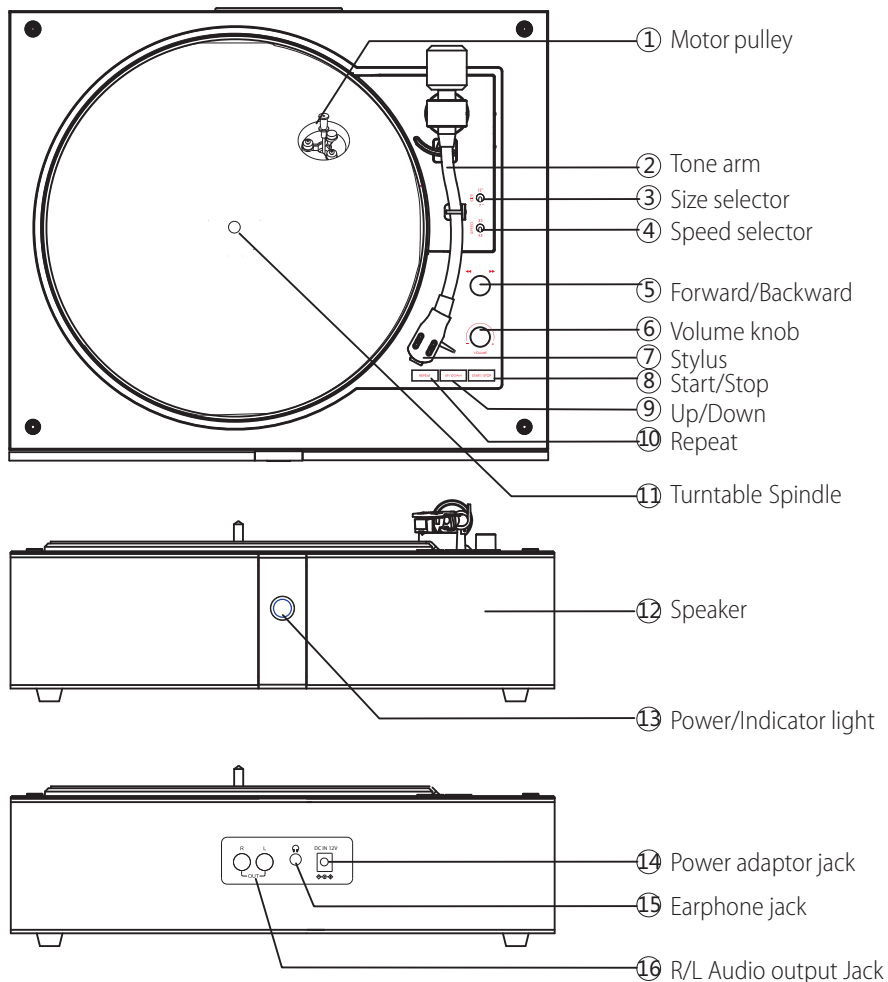
1. Please use the appliance as instructed.
2. DO NOT expose the appliance to rain, moisture, dripping or splashing of water.
3. Ensure the power supply voltage matches the voltage indicated on the product.
4. DO NOT retrofit the plug yourself in any way.
5. DO NOT pull, bend, step on or compress the power cord.
6. Assemble the product as instructed, and DO NOT place any objects on the product.
7. Avoid dropping any objects or splashing any liquid into the appliance, for they may contact with dangerous voltage points or cause component short circuits, leading to fire or electric shock.
8. DO NOT attempt to repair the appliance or try to remove the casing panel yourself. All maintenance work should be left to qualified service personnel.
9. DO NOT use turntable replacement parts or components with this product that are not approved by the manufacturer.
10. DO NOT place the appliance anywhere near high temperature or open flame.
11. Place the product on a flat and stable surface; extra caution should be paid to prevent tipping or collision during moving or handling.
12. The slots and openings on the body of the machine are designed to ensure ventilation and reliable operation of the product, preventing overheating. DO NOT block or cover these openings.
13. Unplug the product during thunderstorm or the product is not in use for extended periods.



## Exterior Body Maintenance

14. When the turntable body is dirty or dusty, first disconnect the AC adapter and then wipe off the dirt and dust with a soft, dry cloth.
15. DO NOT use benzol, thinners, etc.
16. When storing the product for a long time, disconnect the AC adapter from the outlet and wrap the product for storage.
17. DO NOT allow the product or packaging to be damp.
18. The drive belt should be removed to prevent unequal stretching.

## Product Description

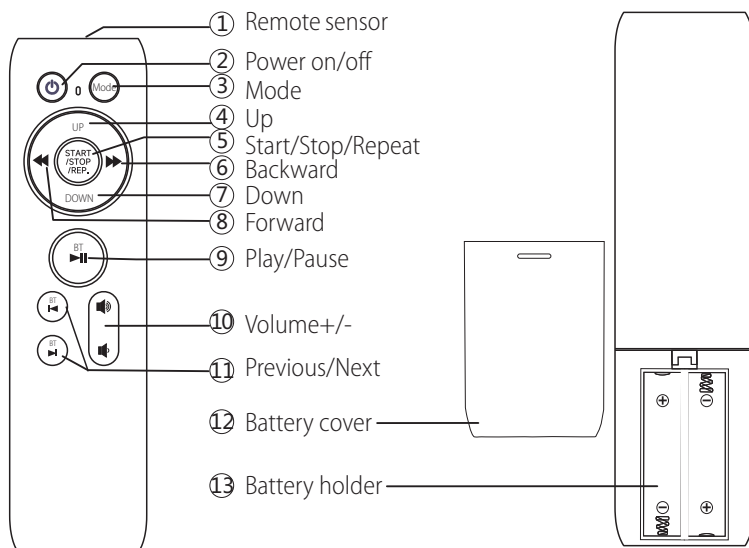


### Main Power Connection

1. Insert the Power adaptor to the POWER INPUT JACK at the back of the turntable.
2. Plug the Power plug into a normal power outlet.

**Note:** DO NOT plug the AC power plug into a power outlet before all turntable assembly is completed. Before powering on, recheck all connections to make sure they are correct and secure. Always turn off the turntable before connecting or disconnecting from power.

## Remote control

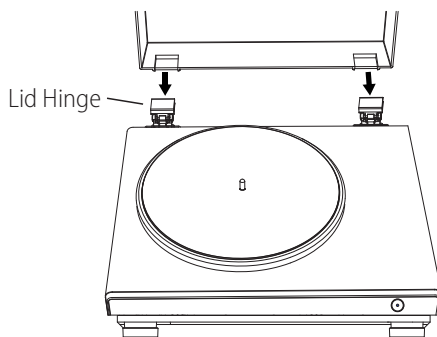


### Battery precautions:

1. When installing the battery, pay attention to the corresponding positive (+) pole and negative (-) pole marks.
2. Please replace the battery in time when it runs out of power.
3. Must keep the battery out of the reach of children.

## Installing the Lid

Align the hinge catch of the lid with the Lid Hinge on the back of the unit, and then press the dust cover into place.



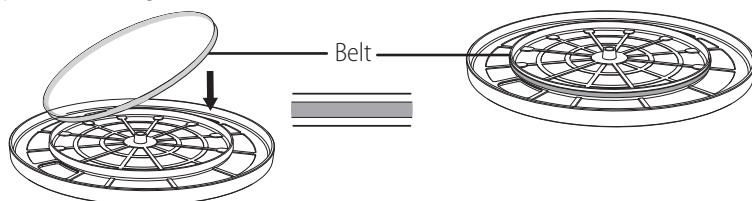
## Installing the Belt

- The belt is a consumable part. Replace the belt if the playback speed slows down or irregular rotation occurs. **Usually, it is recommended to replace the belt annually.**
- It's necessary to disconnect the AC adapter before replacing the belt.

**For the first time, you use this Record player, you need to install the belt.**

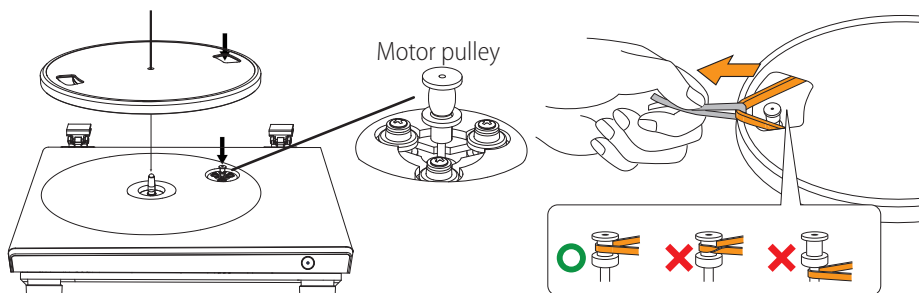
Step 1. Turn the platter over and you will see a raised circle.

Loop the belt along the middle circle.



Step 2. Attach the platter:

Mount one of the openings on the turntable with the Motor pulley.

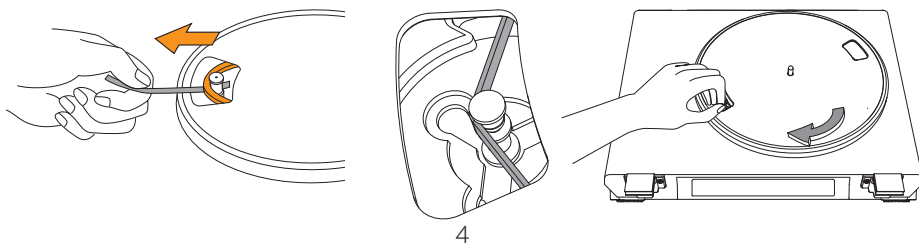


Step 3. Place the belt on the motor pulley.

Hold the belt and slide it onto the notch of the brass motor pulley.

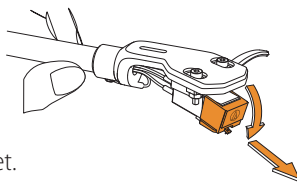
Remove the ribbon from the belt.

Step 4. Use your hand, slowly rotate the platter ten times clockwise as shown.



## Replacing the Stylus

It is suggested to replace the stylus after 400 hours use. In addition to the deterioration of sound quality, records may also be damaged as the cartridge's stylus tip wears down.

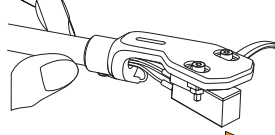


### Removing the Stylus

- Be sure to disconnect the product's AC adapter from the outlet.
- When replacing the stylus, hold the headshell and the cartridge body tightly.
- Rotate the front of the stylus in a forward and down motion.

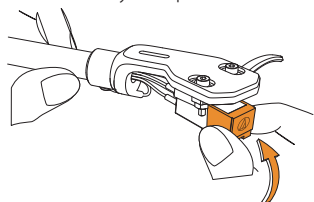
### Installing a New Replacement Stylus

1. Mount the new replacement stylus to the cartridge.

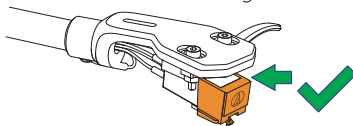
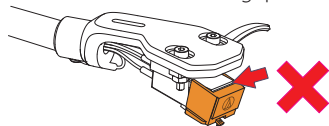


Engage in body first

2. Lift the stylus up until a click is heard.

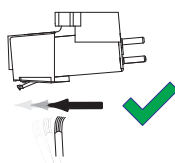
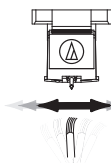


3. Make sure there is no gap between the headshell and the cartridge.



### Cleaning the Stylus

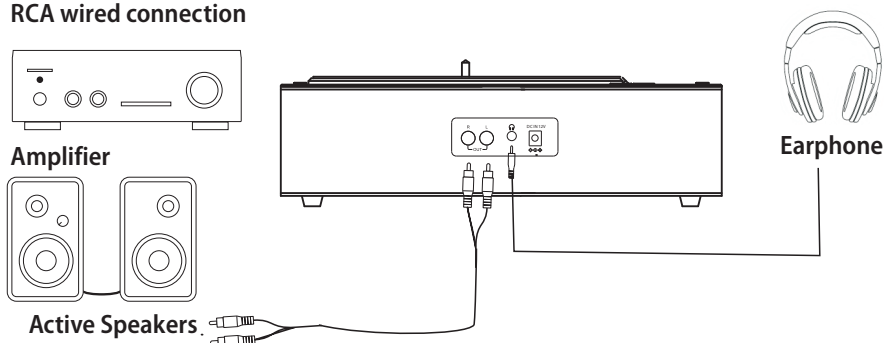
- When the stylus becomes dirty or dusty, please clean it with a soft brush.
- It is recommended to use a stylus-specific cleaner (not included) to clean the stylus.
- Carefully remove dust from the base of the stylus tip towards the tip.



## Connection to External Speaker with RCA Audio Cable

Use the **audio cable** to connect the Speakers or external amplifier, please follow the instructions below:

### RCA wired connection



**Note:** In order to achieve the best sound, it is advised to set the turntable volume to a minimal level. Then the turntable's audio will be played back through your own amplifier, speakers, etc.

Please avoid listening with headphones for a long time, as it can damage your hearing.

## Bluetooth Operation

1. Power on and press the **POWER** button to enter Bluetooth mode, the indicator flashes blue.
2. Place the devices within a range of 10 meters.
3. Turn on the Bluetooth function of your media device, search and select "**1byone AT02**" to pair the media device with the turntable.
4. Once the turntable is successfully paired with your media device, the Bluetooth indicator light will be stabilized.
5. The playback is mainly controlled by your media device.
6. The remote control operations:
  - (1) Press the **PLAY/PAUSE** button to play or stop the playback.
  - (2) Press the **PREVIOUS** or **NEXT** buttons to skip to the previous or next track.

# Playing a Record

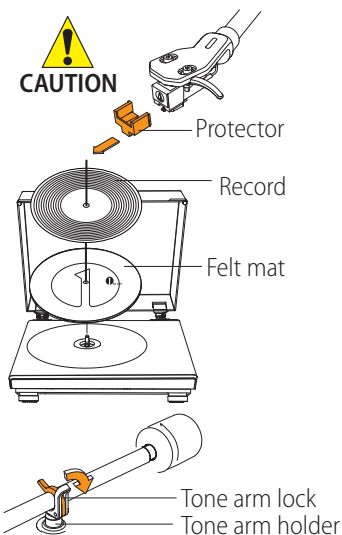
## 1. Before Playing a Record

1.1 Pull the **protector** straight forward to remove it.

**Note:** Applying a downward force may cause the Stylus to come off the body. If the Stylus was about to come off or already came off, only a faint sound will be produced. In such case, refer to “**Replacing the Stylus**” to reattach the Stylus correctly.

1.2 Place the record on the **felt mat** so that the center hole aligns with the spindle.

1.3 Release the Tone arm from the Tone arm holder.



## 2. Turntable Operation

Sufficiently lower the volume first.

2.1 Attach the included **power adaptor** to the turntable, press and hold the **POWER** button to power on or off the unit, the indicator lights up when the device is activated.

2.2 Press the **POWER** button to select the record play mode, the indicator lights white.

2.3 Release the **Tone arm**, and remove the **stylus protector** from the stylus.

2.4 For 45RPM records, ensure that the provided **45RPM adaptor** is properly seated on the turntable's spindle before playback.

2.5 Turn the **SPEED switch** to select between **33RPM** and **45RPM** speeds according to the record type.

2.6 Turn the **SIZE** switch to select between **7"** and **12"** according to the record size.

2.7 Press the **START/STOP** button to start playback press again to stop playback.

2.8 Press the **UP/DOWN** button to lift up or lay down the Tone arm.

2.9 Adjust the turntable's volume to the desired level.

3.0 Press the **REPEAT** button to set the playback in repeat mode, the turntable will auto restart the record once it finished playing the whole record. Press again to cancel.

3.1 Rotate the **FORWARD/REWARD** knob to forward or backward the playback.

3.2 When finish playing the record, the **Tone arm** returns to Tone arm holder. Fix the protector back to the Stylus. Power off the machine, all indicator lights will shut off.



## Playing a Record

3.3 In some cases, the Stylus falls out of the turntable, or not on the beginning of the record.

Use the buttons on the front panel to set the **drop positions**.

Press the **START/STOP** button to stop playback, the Tone arm returns back to the holder.

(1) Press and hold the **REPEAT** button **at least 6 seconds** until the Tone arm moves inward of the record. If the Stylus still not falls on the starting position, stop the playback and press the **REPEAT** button again. This button can adjust the Stylus inward 3 times only.

(2) Press and hold the **UP/DOWN** button **at least 6 seconds** until the Tone arm moves outward of the record. This button can adjust the Stylus outward 3 times only.

(3) Press and hold the **START/STOP** button **at least 6 seconds** to set the Stylus back to the **default** drop position.

**(4) The Stylus will fall on the last setting position when it powers on again.**

### **Note:**

1. If the felt mat gets dirty, it can easily scratch the record, so remove the felt mat periodically and wipe off any dust.
2. To prevent the record from getting scratched and warping, remove it after use.
3. Do not use a disk stabilizer.

## Troubleshooting

Problem	Solution
<b>The platter does not spin.</b>	<ul style="list-style-type: none"> <li>• <b>Is the power adapter connected to the socket?</b> <ul style="list-style-type: none"> <li>- Please ensure the power adapter is properly connected to the power outlet.</li> </ul> </li> <li>• <b>What is the status of the indicator light?</b> <ul style="list-style-type: none"> <li>-If the indicator light is not on, please follow the operating steps to turn on the device correctly. After turning on the power, select the appropriate speed to start the turntable.</li> <li>-If the indicator light is blue, this means the turntable is in Bluetooth mode. Please turn the function knob to switch to record mode.</li> </ul> </li> <li>• <b>Is the belt detached or damaged?</b> <ul style="list-style-type: none"> <li>-Please check the belt condition and ensure it is properly installed. If damaged, replace it with a new belt.</li> </ul> </li> <li>• <b>Is the AUX-IN audio cable plugged in?</b> <ul style="list-style-type: none"> <li>- The AUX IN function has the highest priority. Please disconnect the AUX-IN audio cable before playing records or using Bluetooth functions.</li> </ul> </li> <li>• <b>Is the motor working?</b> <ul style="list-style-type: none"> <li>- If installation and operation are correct, please check if the motor pulley is rotating.</li> </ul> </li> </ul>
<b>Turntable spinning, but no sound or only low volume coming out from the unit.</b>	<ul style="list-style-type: none"> <li>• <b>Are there any mistakes in wiring connections and function settings?</b> <ul style="list-style-type: none"> <li>- Check the wiring connections between the record player and the audio device, as well as the device's functions and volume settings.</li> </ul> </li> <li>• <b>Is the stylus damaged?</b> <ul style="list-style-type: none"> <li>- Replace the stylus if necessary, and it is recommended to replace the stylus every 400 hours of use.</li> </ul> </li> <li>• <b>Is the stylus correctly installed on the cartridge base?</b> <ul style="list-style-type: none"> <li>- Check that the stylus and cartridge are correctly installed.</li> </ul> </li> </ul>
<b>Music playback is slow or uneven.</b>	<ul style="list-style-type: none"> <li>• <b>Is the belt installed correctly?</b> <ul style="list-style-type: none"> <li>- Refer to the manual for belt installation instructions.</li> </ul> </li> <li>• <b>Is the belt excessively stretched?</b> <ul style="list-style-type: none"> <li>- Replace with a new belt.</li> </ul> </li> </ul>

<b>Sound skip occurs.</b>	<ul style="list-style-type: none"> <li>• <b>Is the record warped?</b> - Check the record.</li> <li>• <b>Is the record scratched?</b> - Check the record.</li> <li>• <b>Is the stylus pressure correct?</b> - Readjust the tracking force.</li> </ul>
<b>Strange noises from the turntable.</b>	<ul style="list-style-type: none"> <li>• <b>Is the product absorbing vibrations from the ground, walls, or nearby speakers?</b> - Reduce environmental vibrations or install the product on a surface that is less susceptible to vibrations.</li> <li>• <b>Is the product installed on an unstable surface?</b> - Ensure the product is placed on a stable surface.</li> </ul>
<b>Noise during record playback.</b>	<ul style="list-style-type: none"> <li>• <b>Is there dust accumulated on the stylus tip?</b> - Clean the stylus with a professional cleaning brush.</li> <li>• <b>Are there dust or scratches on the vinyl record?</b> - Clean the surface with commercial record cleaning products, or replace the vinyl record.</li> <li>• <b>Is the tracking force correct?</b> - Refer to the manual to adjust the cartridge tracking force correctly.</li> </ul>
<b>Record playback speed is too fast or too slow.</b>	<ul style="list-style-type: none"> <li>• <b>Is the turntable's speed setting correct?</b> - Select the correct speed based on the type of record being played.</li> <li>• <b>Is the speed still abnormal?</b> - Check if the turntable on a flat horizontal surface.</li> </ul>
<b>The stylus cannot touch the record.</b>	- The tonearm is too low; turn the screw on the Tonearm Lift Lever clockwise to lower the stylus height.
<b>The stylus is scraping the record severely.</b>	- The tonearm is too high; turn the screw on the Tonearm Lift Lever counterclockwise to raise the stylus height.

**Note:** The tightness of the factory screws is determined by the thickness of the included Slip Mat. If you use a different Slip Mat that is thinner or thicker, please adjust the screws according to the troubleshooting steps for the last two issues.

## Specifications

### Turntable

Power input	Input AC100-240V, 50-60Hz
Maximum Power Consumption	30W
Power adaptor	12V, 3A
Speed	33, 45RPM
Standby Power	<0.5W
ERP II	15min

### Cartridge

Model	Audio-Technica AT3600
Frequency Response	20Hz-20kHz
Recommended Cartridge Tracking Force	2.5±0.5g
Weight	0.18oz (5.1g)

Note: Design and specifications are subject to change without notice.

## Disposal



### Disposal of the Product

Under no circumstances should you dispose of this product in normal domestic waste.

This product is subject to the provisions of European Directive 2012/19/EU.

Dispose of this product via an approved disposal company or your municipal waste facility.

Please observe currently applicable regulations. Please contact your waste disposal center if you need any further information.

### Information on Electrical and Electronic Equipment

The following information is intended for users of electrical and electronic equipment in private households.

#### Electrical and electronic equipment (WEEE)

Must be disposed of separately from household waste through designated collection systems.

Please remove batteries, accumulators, or detachable lamps before recycling unless handled by public authorities. You can return old devices to public disposal facilities for proper disposal or reuse. Please contact local points for details.



**Crossed-Out Dustbin Symbol** indicates that devices should be disposed of separately from household waste.



The appliance's packaging is made from environmentally friendly material and can be disposed of at your local recycling plant.

## When Moving the Turntable

Pack the product using the original packaging materials, following the original arrangement. If you do not have the packaging materials, please take the following measures:

- Disconnect the power adapter from the socket, remove the anti-slip mat and platter, and wrap them to prevent damage.
- Place the stylus protection cover on.
- Secure the tonearm to the rest of the unit with a cord or similar item to prevent it from falling off during the moving process.
- Wrap the turntable body with paper or soft cloth to avoid damage.

## Compliance with FCC Regulation

This device complies with Part 15 of FCC rules. Operation is subject to the following two conditions:

- (1) This device may not cause harmful interference, and
- (2) This device must accept any interference received, including interference that may cause undesired operation.

This equipment has been tested and found to comply with the limits for a Class B digital device, pursuant to Part 15 of the FCC rules. These limits are designed to provide reasonable protection against harmful interference in a residential installation.

This equipment generates, uses and can radiate radio frequency energy and, if not installed and used in accordance with the instructions, may cause harmful interference to radio communications. However, there is no guarantee that interference will not occur in a particular installation.

If this equipment does cause harmful interference to radio or television reception, which can be determined by turning the equipment off and on, the user is encouraged to try to correct the interference by one or more of the following measures:

- Reorient or relocate the receiving antenna.
- Increase the separation between the equipment and receiver.
- Connect the equipment into an outlet on a circuit different from that to which the receiver is connected.
- Consult the dealer or an experienced radio/TV technician for help.

RF Exposure Statement:

When using the product, maintain a distance of 20cm from the body to ensure compliance with RF exposure requirements.

**WARNING:** Changes or modifications to this unit not expressly approved by the party responsible for compliance could void the user's authority to operate the equipment.

**WARNING:** Cancer and Reproductive Harm - <http://www.P65Warnings.ca.gov>  
For more information go to <http://www.1byonebros.com/Compliance/Prop65>

## UKCA Declaration and Conformity

We, 1byone Products Inc, confirm that the appliance as detailed below does comply with all essential requirements of the relevant U.K. legislation for UKCA-marking and governing UK-regulations as mentioned below

**Article Description: HIGH FIDELITY BELT DRIVE TURNTABLE**

**Brand Name: 1byone**

**Model Number: 1-AD07UK13, 1-AD07US13**

Applicable Standard(s)

EN 62479:2010

BS EN 62368-1:2014+A11:2017

ETSI EN 300 328 V2.2.2(2019-07)

ETSI EN 301 489-1 V2.2.3(2019-11)

ETSI EN 301 489-17 V3.2.4(2020-09)

BS EN 55032:2015+A1:2020

BS EN 55035:2017+A11:2020

BS EN IEC 61000-3-2:2019+A1:2021

BS EN 61000-3-3:2013+A2:2021



A handwritten signature in black ink, appearing to read 'Boze Yang', is written over a horizontal line.

Boze Yang  
Department Manager

## Customer Service

UNITED KINGDOM	Email: ukhelp@1byonebros.com
CANADA	Email: cahelp@1byonebros.com
UNITED STATES	Phone: +1 909-391-3888 (Mon-Fri 9:00am - 5:00pm PST) Email: ushelp@1byonebros.com
GERMANY/FRANCE ITALY/SPAIN	Email: euhelp@1byonebros.com

### MANUFACTURER

1byone Products Inc.  
1230 E Belmont Street, Ontario, CA, USA 91761  
Customer Service: +1 909-391-3888  
www.1byonebros.com  
ukhelp@1byonebros.com  
ushelp@1byonebros.com

### BRITISH REPRESENTATIVE (IMPORTER)



APEX CE SPECIALISTS LIMITED  
6f East Union Street, Manchester, England, M16 9AE  
Info@apex-ce.com  
Wells Yan



## **24-Hour Customer Service & 2-Year Warranty**

Email: [ukhelp@1byonebros.com](mailto:ukhelp@1byonebros.com)  
[ushelp@1byonebros.com](mailto:ushelp@1byonebros.com)  
Website: [www.1byonebros.com](http://www.1byonebros.com)

If any accessory is missing from the package or there are any issues with the product, please get in touch with our official customer service.

We will be pleased to serve you!

1byone Products Inc.  
1230 E Belmont Street, Ontario, CA, USA 91761  
Customer Service: +1 909-391-3888  
[www.1byonebros.com](http://www.1byonebros.com)

Made in China