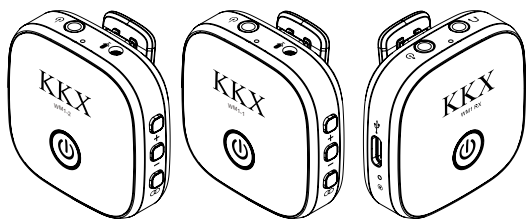


二折三页

KKX



Wireless Microphone

MAIN FUNCTION

1

1. Built-in microphone wireless audio transmission function.
2. External microphone wireless audio transmission function.
3. It has 16 frequencies can be switched to avoid co-channel interference
4. Built-in lithium battery charging function. (TYPE-C interface input: 5.0V-0.5A)
5. Charging and discharging LED indicator. (Red light is on when charging, green light when the battery is full)
6. Connection, code matching/pairing LED indication.
7. Automatic code matching when the receiver is turned on.
8. With monitor headphone output function.
9. Volume shutdown memory function (reboot after shutdown to remember the volume before shutdown)
10. Low battery reminder function (red and green lights flash alternately and slowly when the battery is low)

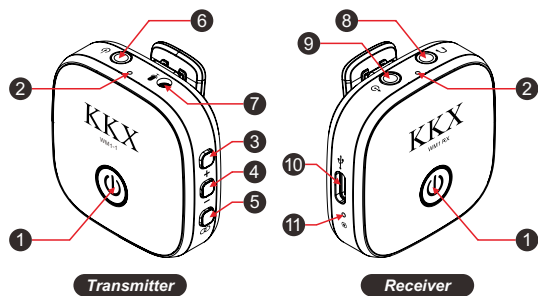
PARAMETER

2

Working frequency	WM1-2: 535-547MHZ
Power supply	Built-in 3.7V 500MAH lithium battery
Acoustic/Radio Sensitivity	-38DB
Maximum sound pressure level (SPL)	115DB SPL
Frequency response	100Hz-10KHz
Input signal to noise ratio	65DB 1KHZ/1PA
Receiving sensitivity	-96dBm
Transmission distance	≥ 30m
Full Charging Battery Duration	≥ 4 hours
Monitor headphone output impedance	32Ω

PRODUCT INTRODUCTION

3



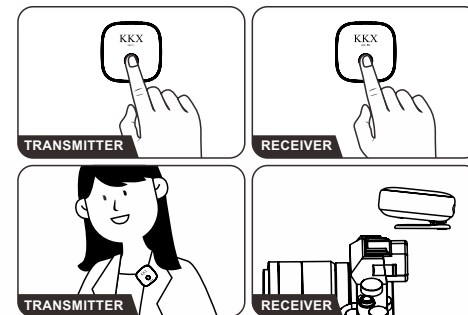
1. Power switch: long press for 2 seconds to turn on/off.
2. Status indicator
3. Button "+": press to increase the volume (low, medium and high volume levels, the status indicator flashes red when the volume is at its maximum)
4. Button "-": press to decrease the volume (low, medium and high volume levels, the status indicator flashes red when the volume is minimum)

4

5. Frequency point switching key/pairing key:
 - a. Frequency switching: short press to switch the connection frequency, short press once and the red light flashes once to indicate that the transmitter and receiver will switch to the next frequency point, WM1-1 switches back and forth from 520MHZ to 532MHZ, WM1-2 switches back and forth from 535MHZ to 547MHZ (Use it when there are many U-segment wireless microphones in the same environment or when there is a lot of environmental interference).
 - b. Pairing: When the transmitter is off, press and hold the pairing button, and then press and hold the power switch for 3 seconds (the status indicator light flashes green and red quickly) to enter the transmitter pairing / code matching state, then turn on the receiver, and then press Click the pairing button to confirm the pairing. After the transmitter and receiver are paired successfully, the status indicator lights will turn green at the same time.
6. External microphone: External MIC recording input, when the external MIC is plugged in, the built-in MIC will be disconnected.
7. Built-in microphone: built-in MIC recording input
8. Headphone output: monitor the recording status
9. Audio output: output audio to the recording device
10. Type-C charging socket
11. Charging indicator

APPLICATION INSTALLATION MODE

5



1. Long press the power switch for 2 seconds, after power on, the machine can be successful connected (when there are many U-segment wireless microphones in the same environment or the environment is disturbed, click the frequency switch key to switch the connection frequency).
2. Clip the transmitter to the collar of the user, or connect an external microphone.
3. Before installing on the camera, setting a certain space between the back clip of the receiver and the receiver push the receiver into the camera notch to fix it.
3. Connect the 3.5mm output cable to the audio output jack of the receiver, and connect the other end of the 3.5mm output cable to the "audio input" jack of the camera.

FCC Caution: Any changes or modifications not expressly approved by the party responsible for compliance could void the user's authority to operate this equipment.

This device complies with part 15 of the FCC Rules. Operation is subject to the following two conditions:

(1) this device may not cause harmful interference, and

(2) this device must accept any interference received, including interference that may cause undesired operation.

This device and its antenna(s) must not be co-located or operating in conjunction with any other antenna or transmitter.

NOTE: This equipment has been tested and found to comply with the limits for a Class B digital device, pursuant to Part 15 of the FCC Rules. These limits are designed to provide reasonable protection against harmful interference in a residential installation. This equipment generates, uses and can radiate radio frequency energy and, if not installed and used in accordance with the instructions, may cause harmful interference to radio communications.

However, there is no guarantee that interference will not occur in a particular installation.

If this equipment does cause harmful interference to radio or television reception, which can be determined by turning the equipment off and on, the user is encouraged to try to correct the interference by one or more of the following measures:

-- Reorient or relocate the receiving antenna.

-- Increase the separation between the equipment and receiver.

-- Connect the equipment into an outlet on a circuit different from that to which the receiver is connected.

-- Consult the dealer or an experienced radio/TV technician for help.

The device has been evaluated to meet general RF exposure requirement. The device can be used in portable exposure condition without restriction