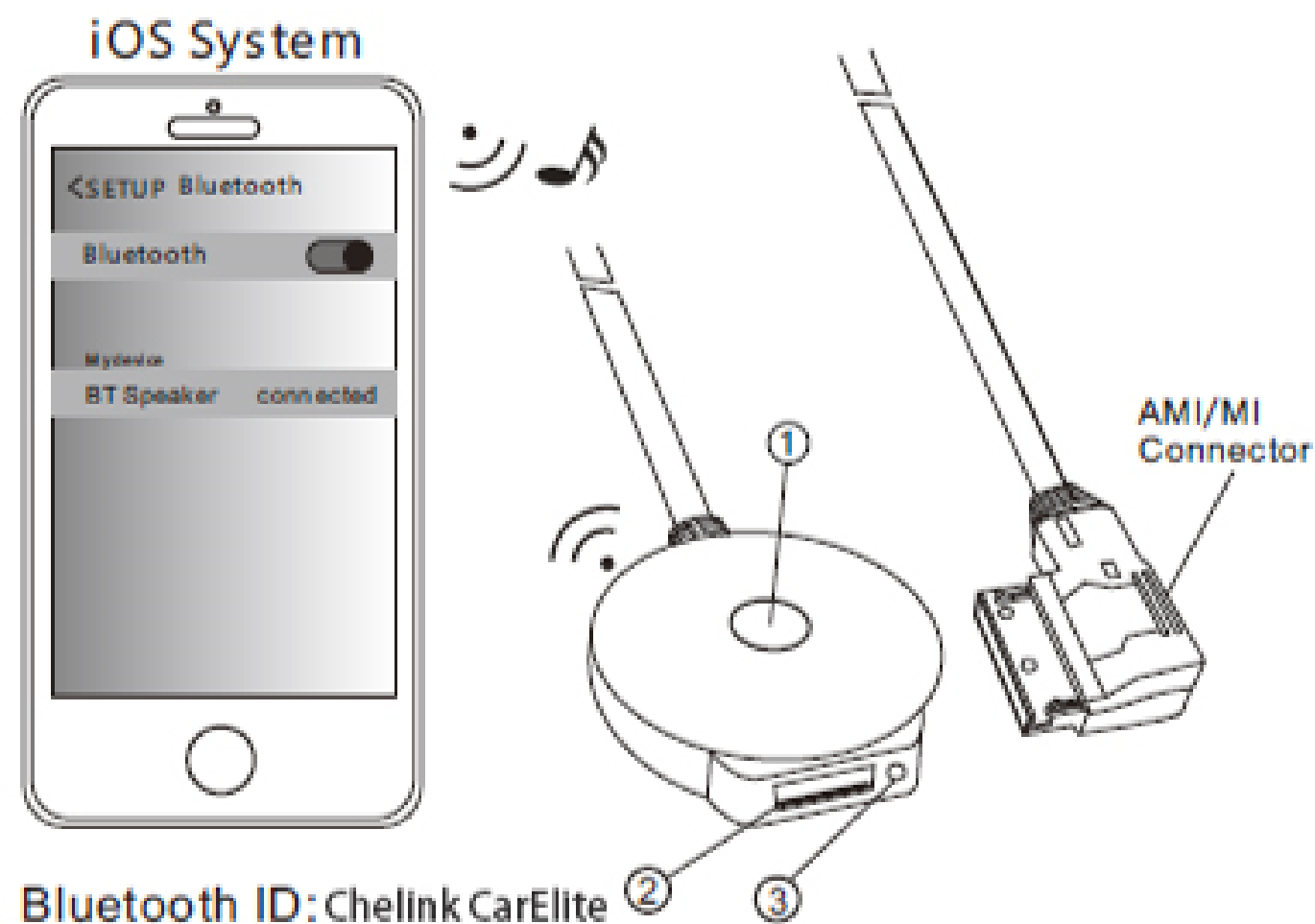


Bluetooth audio adapter

Bluetooth& USB Audio Adapter Cable for Audi (MMI 3G system) and Volkswagen.

Supports external bluetooth audio input and USB power output.Can change between Phone charging and BT audio.

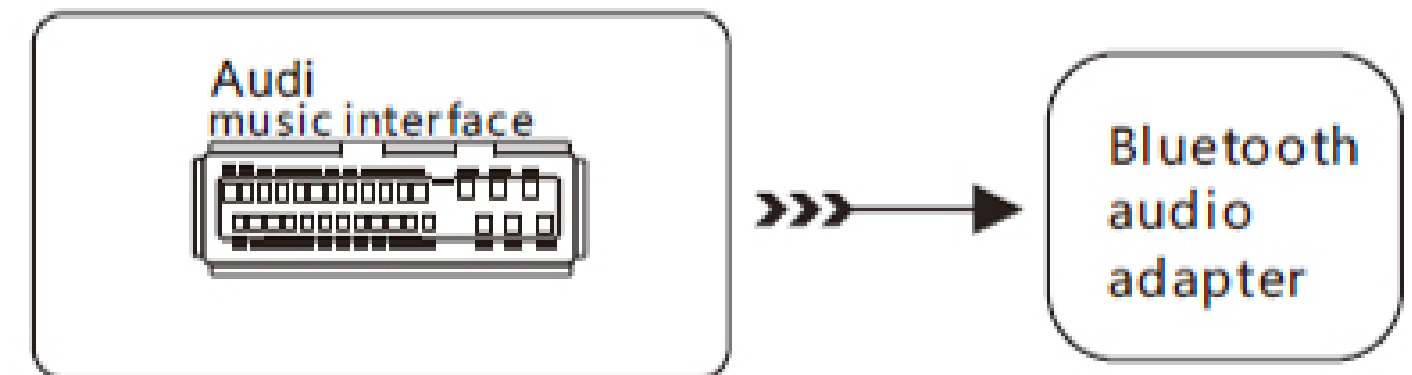
Product illustration:



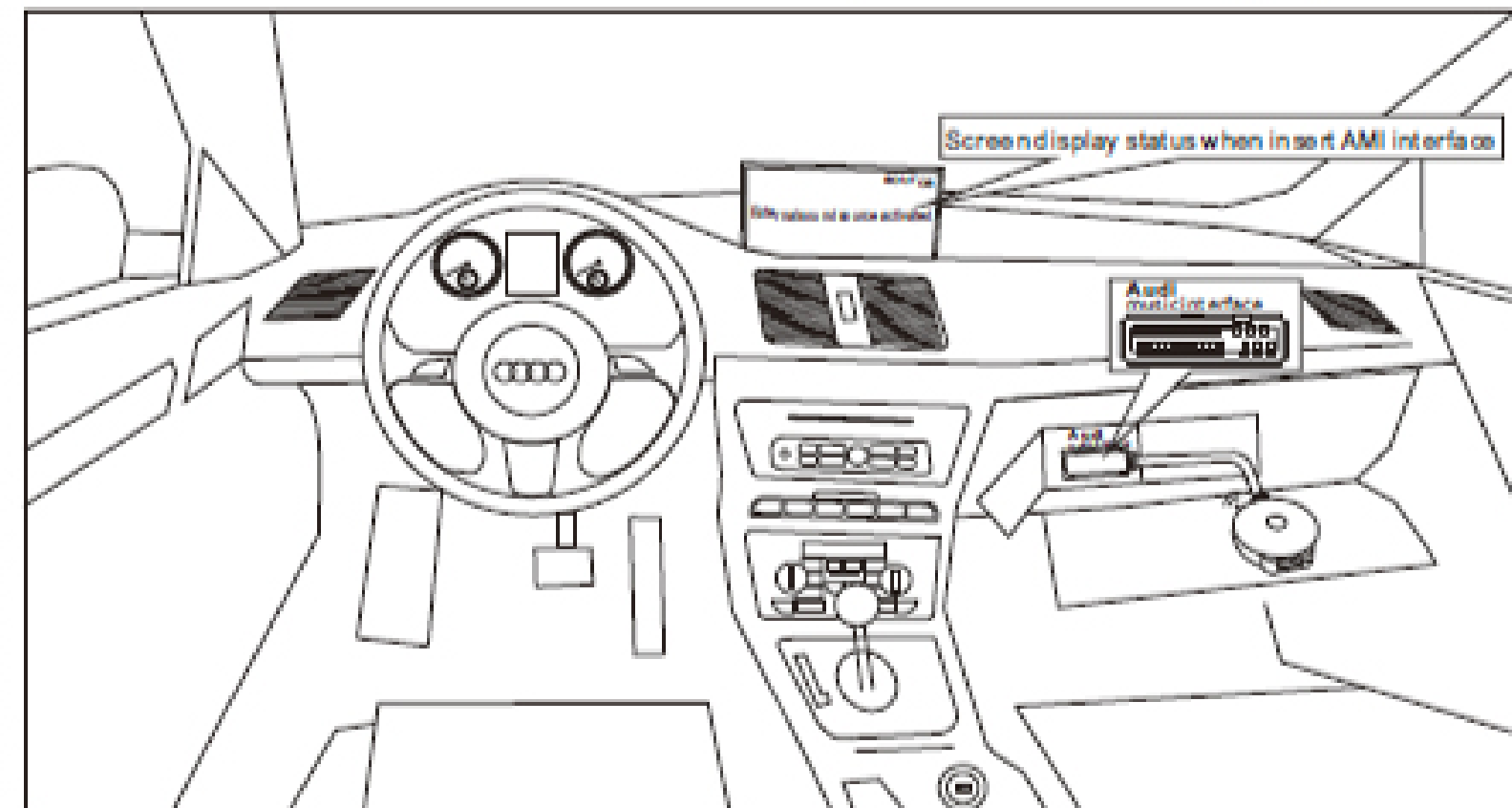
1. USB Charging Power output On/Off
2. USB Power 5V output(LED indicator in Red)
3. LED (Bluetooth / Charging status indication)

Operating Instructions:
Please be sure that the car has AMI / MDI interface.
(The high configuration model has AMI / MDI interface.)
AMI interface usually installed in copilot's glove box or center armrest box.

AUDI/VW Box Port



1. Open MMI system and switch to "Media "
2. Switch the source to Aux mode(external audio input)



*Caveat. If the indicator does not light, please confirm the system version.

FCC Warning Statement

Changes or modifications not expressly approved by the party responsible for compliance could void the user's authority to operate the equipment. This equipment has been tested and found to comply with the limits for a Class B digital device, pursuant to Part 15 of the FCC Rules. These limits are designed to provide reasonable protection against harmful interference in a residential installation. This equipment generates uses and can radiate radio frequency energy and, if not installed and used in accordance with the instructions, may cause harmful interference to radio communications. However, there is no guarantee that interference will not occur in a particular installation. If this equipment does cause harmful interference to radio or television reception, which can be determined by turning the equipment off and on, the user is encouraged to try to correct the interference by one or more of the following measures:

- - Reorient or relocate the receiving antenna.
- - Increase the separation between the equipment and receiver.
- - Connect the equipment into an outlet on a circuit different from that to which the receiver is connected.
- - Consult the dealer or an experienced radio/TV technician for help.

This device complies with part 15 of the FCC Rules. Operation is subject to the following two conditions: (1) This device may not cause harmful interference, and (2) this device must accept any interference received, including interference that may cause undesired operation.

RF Exposure Statement

To maintain compliance with FCC's RF Exposure guidelines, This equipment should be installed and operated with minimum distance of 20 cm the radiator your body. This device and its antenna(s) must not be co-located or operation in conjunction with any other antenna or transmitter.