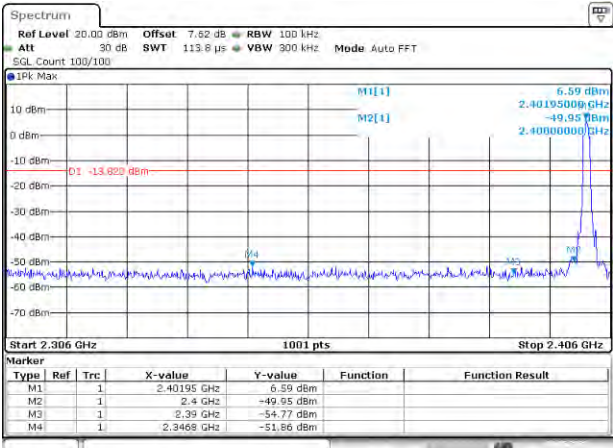


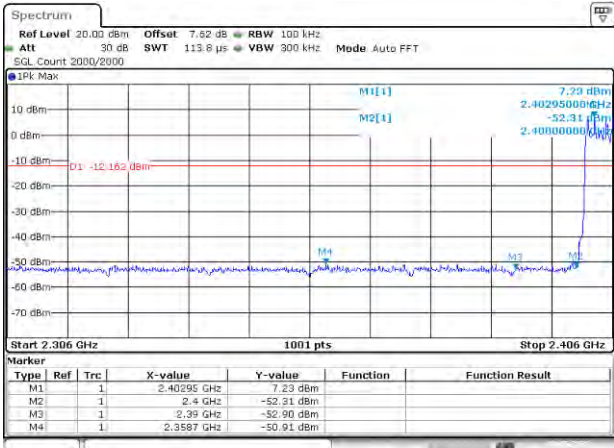
8DPSK Mode:

Test channel:

Lowest channel



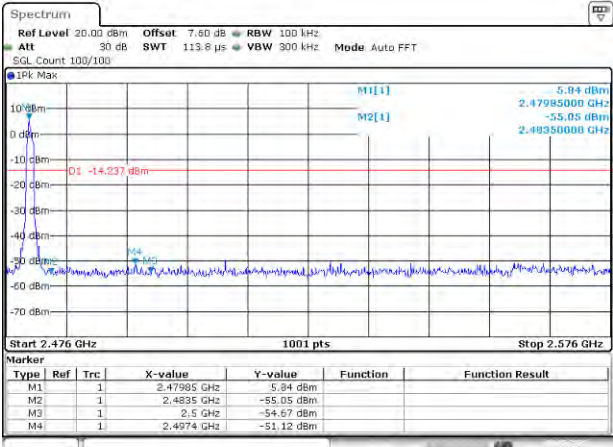
No-hopping mode



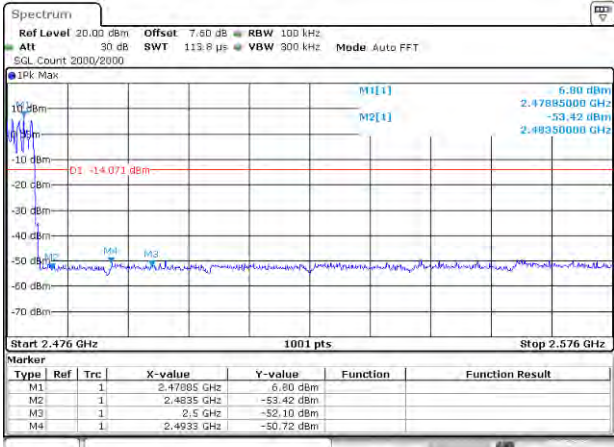
Hopping mode

Test channel:

Highest channel



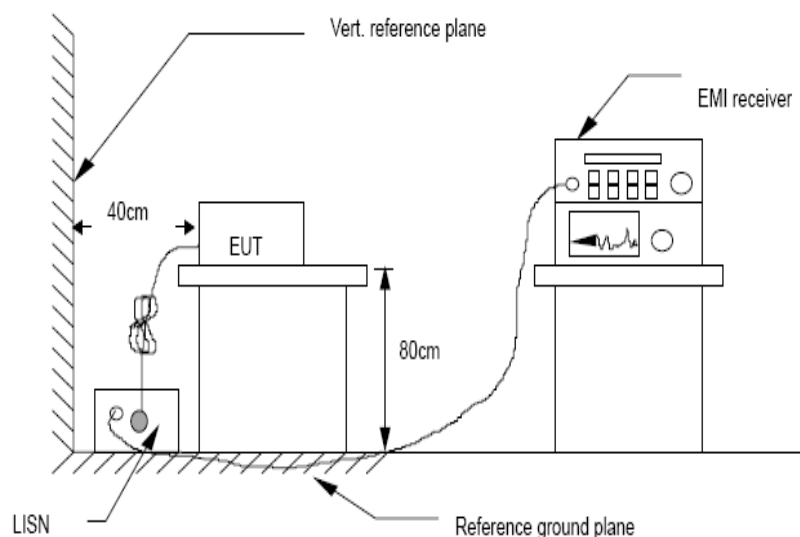
No-hopping mode



Hopping mode

10. Power Line Conducted Emissions

10.1. Block Diagram of Test Setup



10.2. Limit

| Frequency | Maximum RF Line Voltage | |
|-----------------|----------------------------------|-------------------------------|
| | Quasi-Peak Level dB(μ V) | Average Level dB(μ V) |
| 150kHz ~ 500kHz | 66 ~ 56* | 56 ~ 46* |
| 500kHz ~ 5MHz | 56 | 46 |
| 5MHz ~ 30MHz | 60 | 50 |

Notes: 1. * Decreasing linearly with logarithm of frequency.

2. The lower limit shall apply at the transition frequencies.

10.3. Test Procedure

- (1) The EUT was placed on a non-metallic table, 80cm above the ground plane.
- (2) Setup the EUT and simulator as shown in 10.1
- (3) The EUT Power connected to the power mains through a power adapter and a line impedance stabilization network (L.I.S.N1). The other peripheral devices power cord connected to the power mains through a line impedance stabilization network (L.I.S.N2), this provided a 50-ohm coupling impedance for the EUT (Please refer to the block diagram of the test setup and photographs). Both sides of power line were checked for maximum conducted interference. In order to find the maximum emission, the relative positions of equipments and all of the interface cables were changed according to ANSI C63.10:2013on conducted Emission test.
- (4) The bandwidth of test receiver is set at 10KHz.

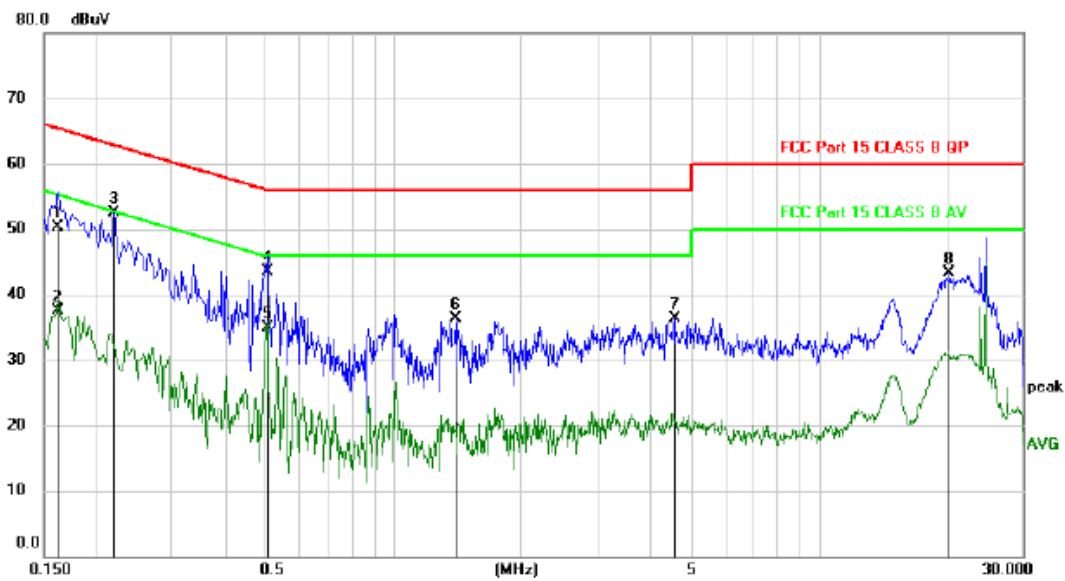
(5) The frequency range from 150 KHz to 30MHz is checked.

10.4.Test Result

PASS. (See below detailed test data)

Note: If peak Result comply with AV limit, QP and AV Result is deemed to comply with AV limit

Line:

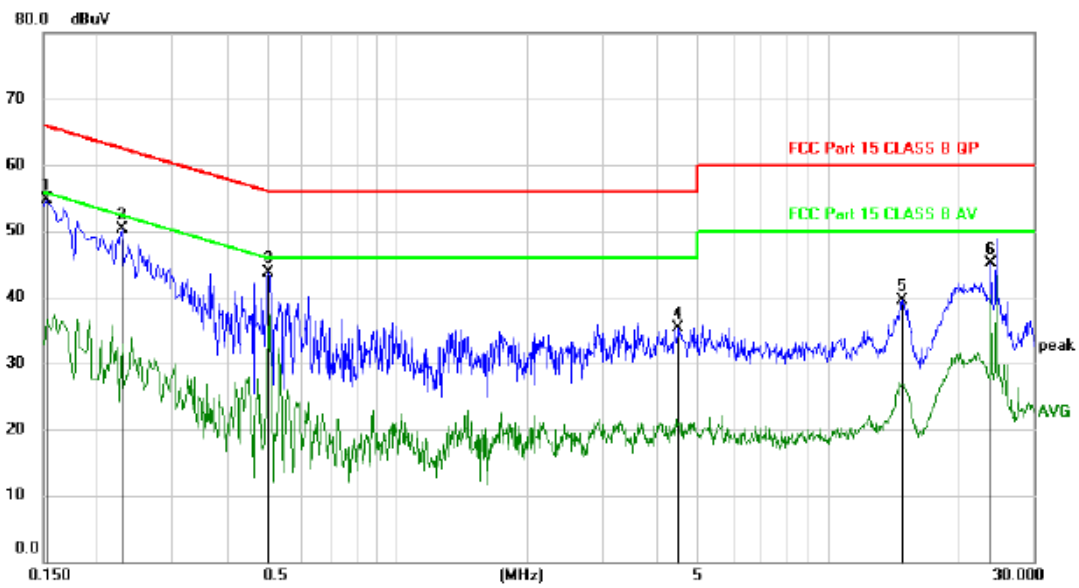


| No. | Mk. | Freq. MHz | Reading Level dBuV | Correct Factor dB | Measure- ment dBuV | Limit dBuV | Margin dB | Detector | Comment |
|-----|-----|--------------|--------------------------|-------------------------|--------------------------|---------------|--------------|----------|---------|
| 1 | | 0.1620 | 40.35 | 9.93 | 50.28 | 65.36 | -15.08 | QP | |
| 2 | | 0.1620 | 27.60 | 9.93 | 37.53 | 55.36 | -17.83 | AVG | |
| 3 | * | 0.2190 | 42.61 | 9.94 | 52.55 | 62.86 | -10.31 | peak | |
| 4 | | 0.5039 | 33.52 | 9.96 | 43.48 | 56.00 | -12.52 | QP | |
| 5 | | 0.5039 | 24.99 | 9.96 | 34.95 | 46.00 | -11.05 | AVG | |
| 6 | | 1.3890 | 26.34 | 9.90 | 36.24 | 56.00 | -19.76 | peak | |
| 7 | | 4.5660 | 26.35 | 10.01 | 36.36 | 56.00 | -19.64 | peak | |
| 8 | | 20.1810 | 32.78 | 10.47 | 43.25 | 60.00 | -16.75 | peak | |

*:Maximum data x:Over limit !:over margin

(Reference Only)

Note: Measurement=Reading Level+Correc Factor. Factor=(LISN or ISN or PLC or Current Probe)Factor+Cable

Neutral:

| No. | Mk. | Freq. MHz | Reading Level dBuV | Correct Factor dB | Measure- ment dBuV | Limit dBuV | Margin dB | Detector | Comment |
|-----|-----|--------------|--------------------------|-------------------------|--------------------------|---------------|--------------|----------|---------|
| 1 | * | 0.1530 | 44.77 | 9.94 | 54.71 | 65.84 | -11.13 | peak | |
| 2 | | 0.2280 | 40.34 | 9.95 | 50.29 | 62.52 | -12.23 | peak | |
| 3 | | 0.5010 | 33.78 | 9.96 | 43.74 | 56.00 | -12.26 | peak | |
| 4 | | 4.4880 | 25.28 | 10.00 | 35.28 | 56.00 | -20.72 | peak | |
| 5 | | 14.8530 | 29.15 | 10.33 | 39.48 | 60.00 | -20.52 | peak | |
| 6 | | 24.0000 | 34.60 | 10.45 | 45.05 | 60.00 | -14.95 | peak | |

*:Maximum data x:Over limit !:over margin

(Reference Only)

Note: Measurement=Reading Level+Correc Factor. Factor=(LISN or ISN or PLC or Current Probe)Factor+Cable

Remark: All modes have been tested, and only worst data of GFSK mode, Channel 2441MHz (AC 120V/ 60Hz) was listed in this report.

11. Antenna Requirements

11.1. Limit

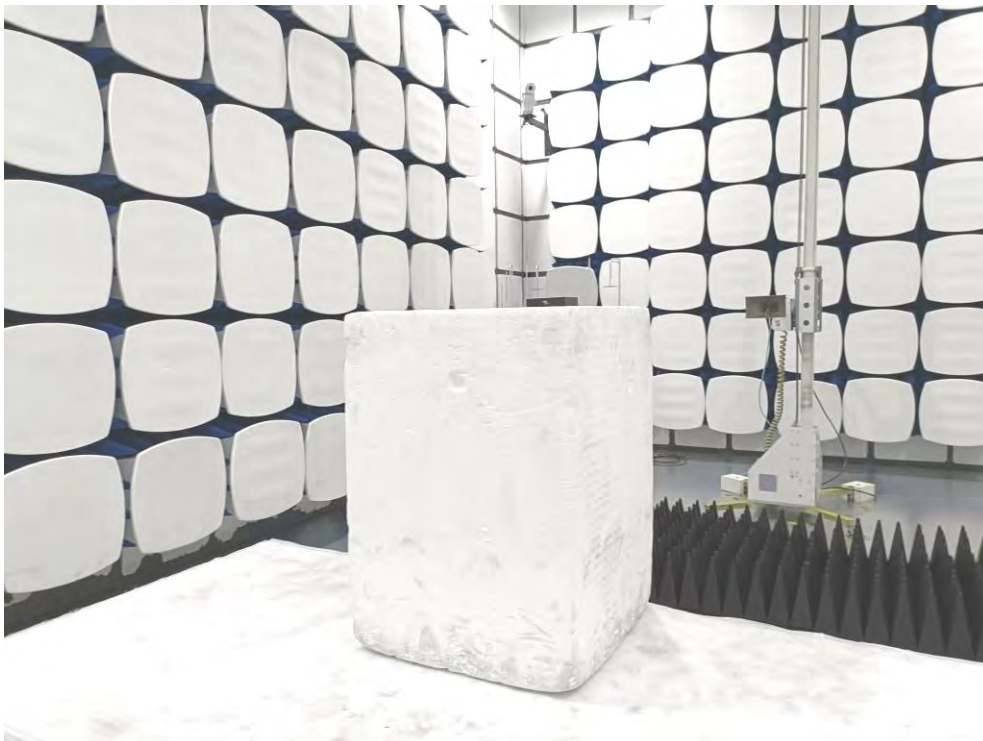
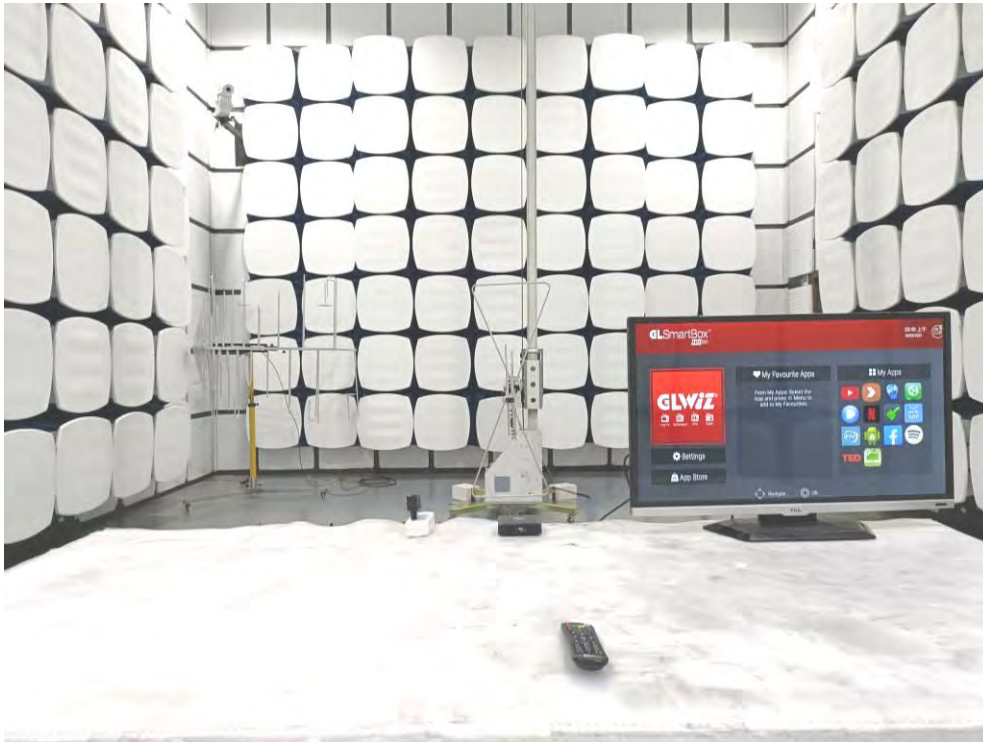
For intentional device, according to FCC 47 CFR Section 15.203 and RSS-GEN, an intentional radiator shall be designed to ensure that no antenna other than that furnished by the responsible party shall be used with the device. And according to FCC 47 CFR Section 15.247 (b), if transmitting antennas of directional gain greater than 6dBi are used, the power shall be reduced by the amount in dB that the directional gain of the antenna exceeds 6dBi.

11.2. Result

The EUT antenna is internal antenna. It complies with the standard requirement.

12. Test Setup Photo

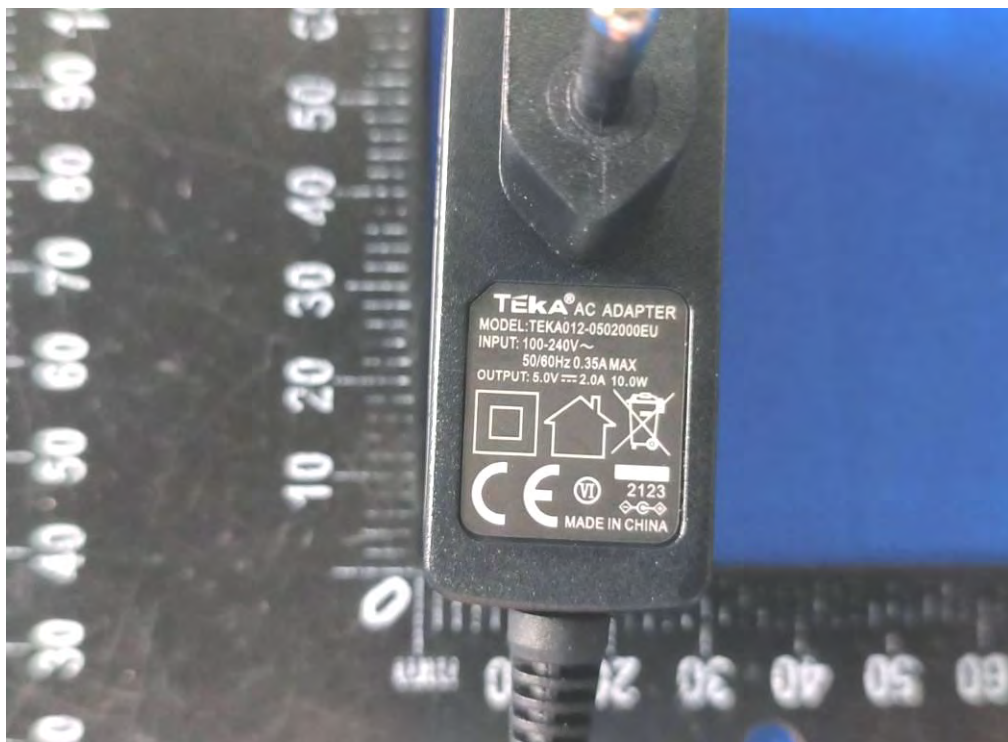
12.1. Photo of Radiated emission

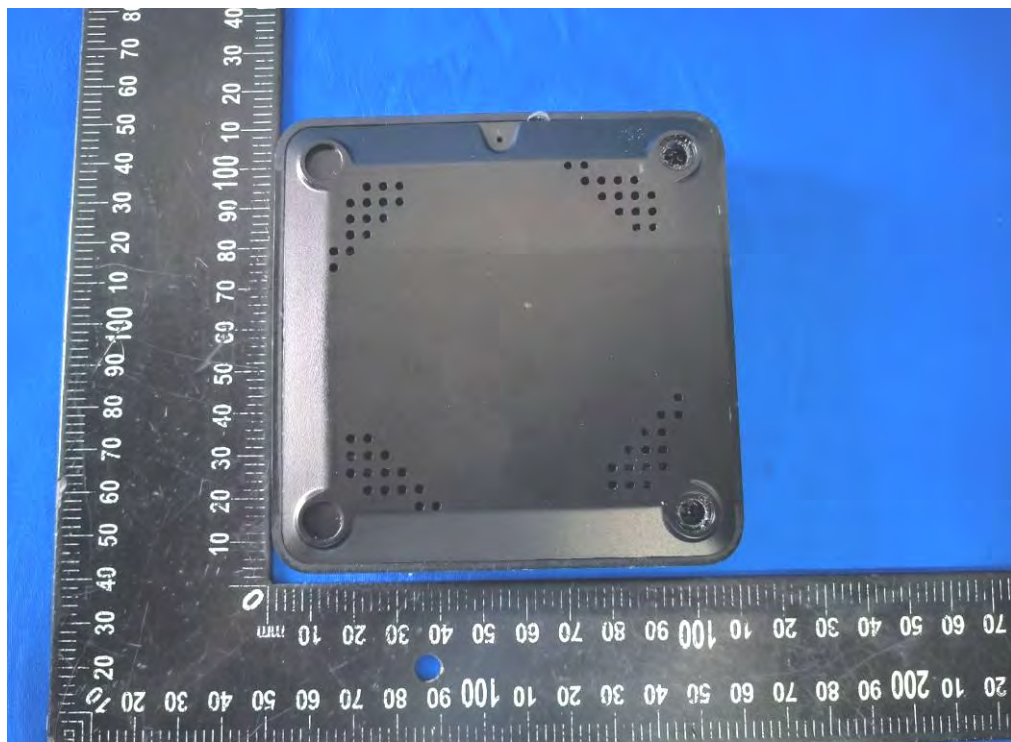


12.2.Photo of Conducted Emission test

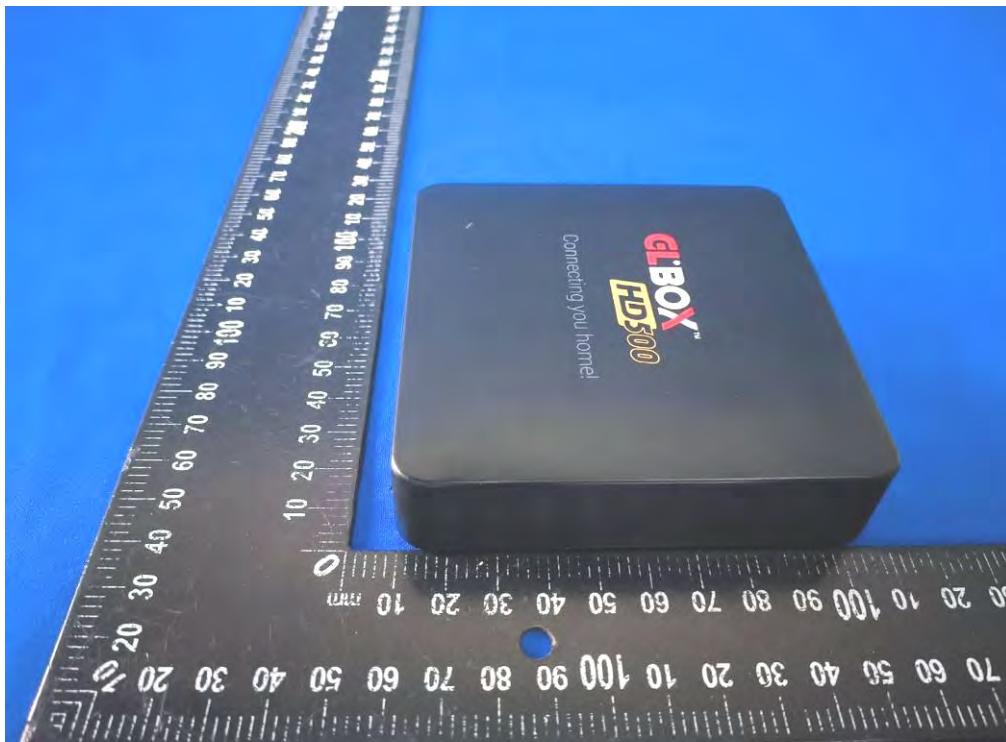


13.EUT Photo

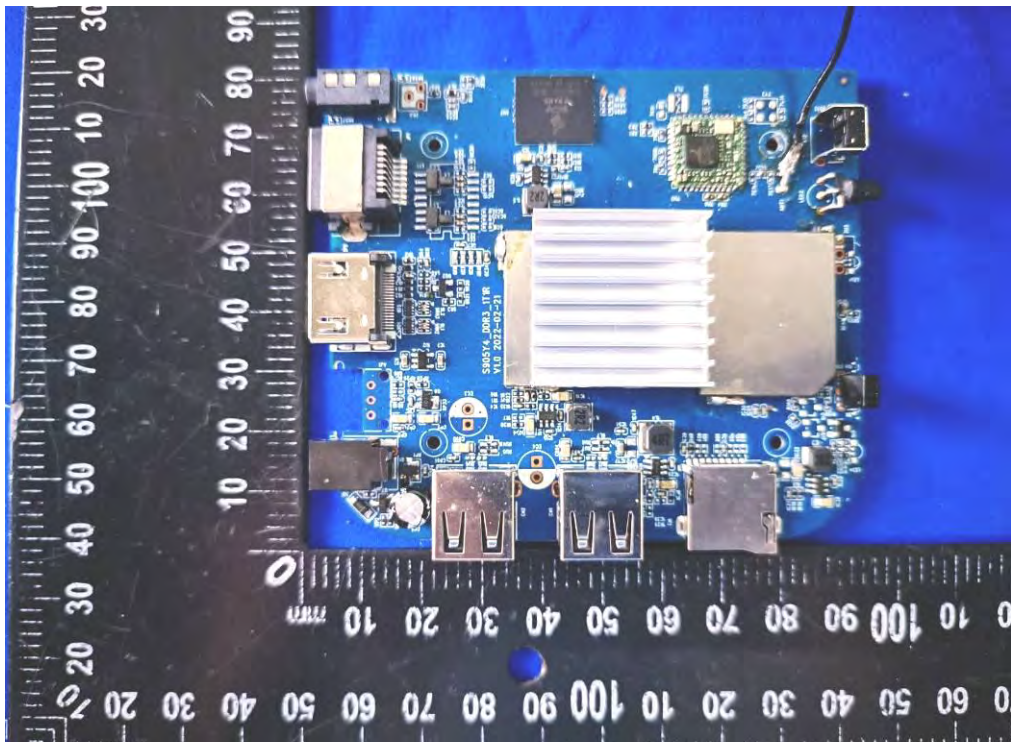


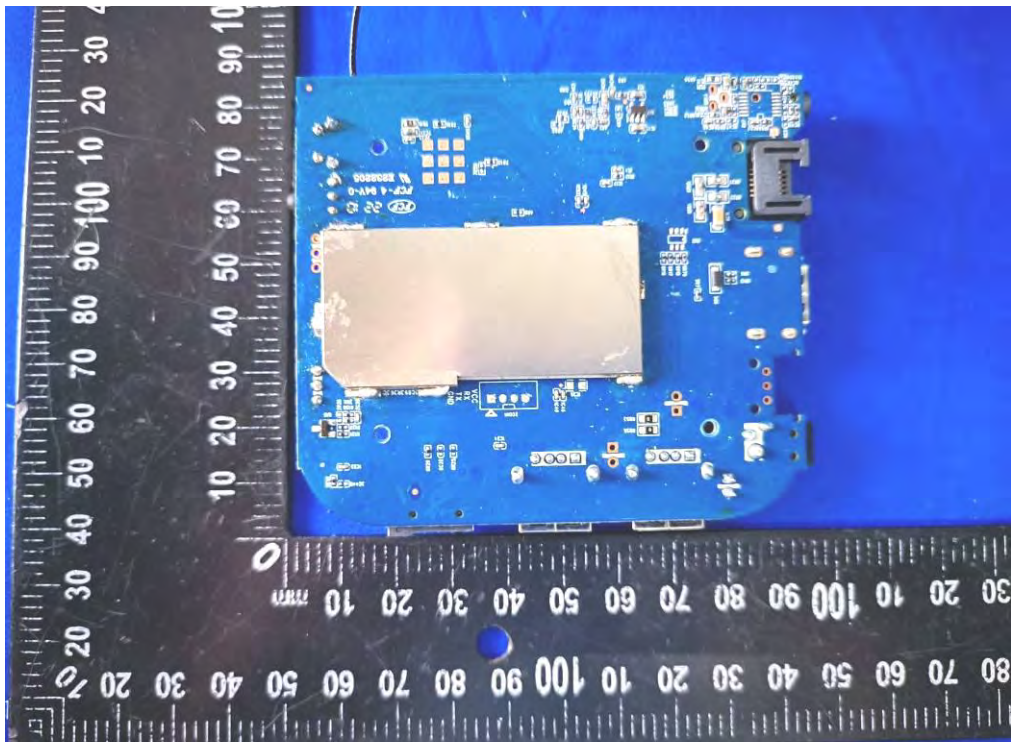
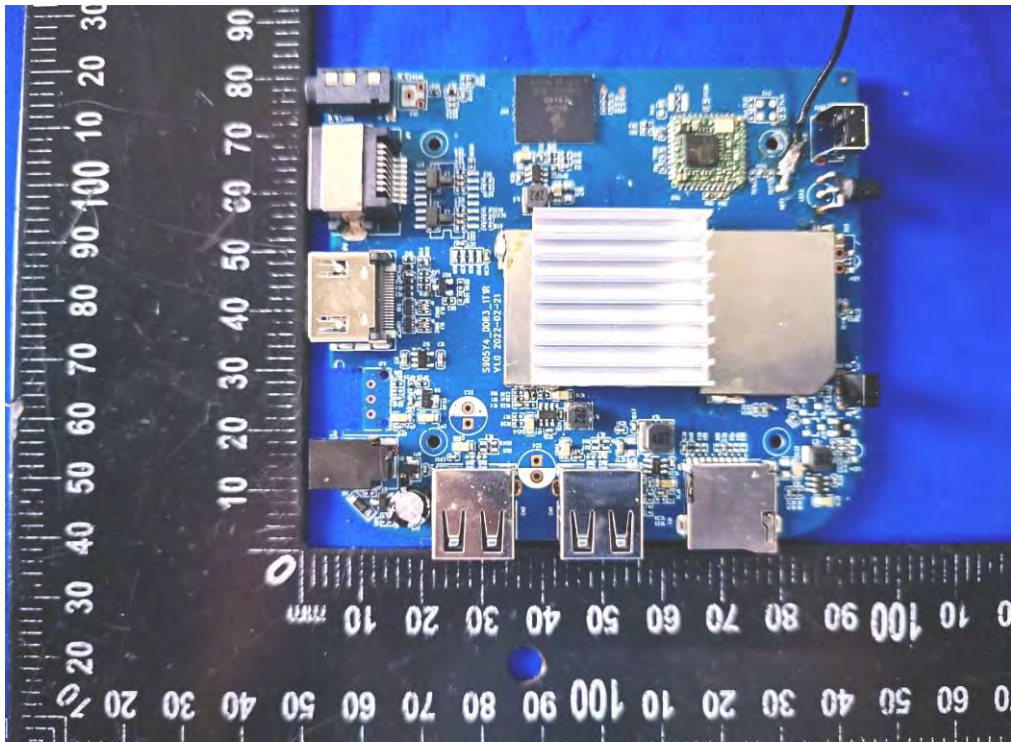


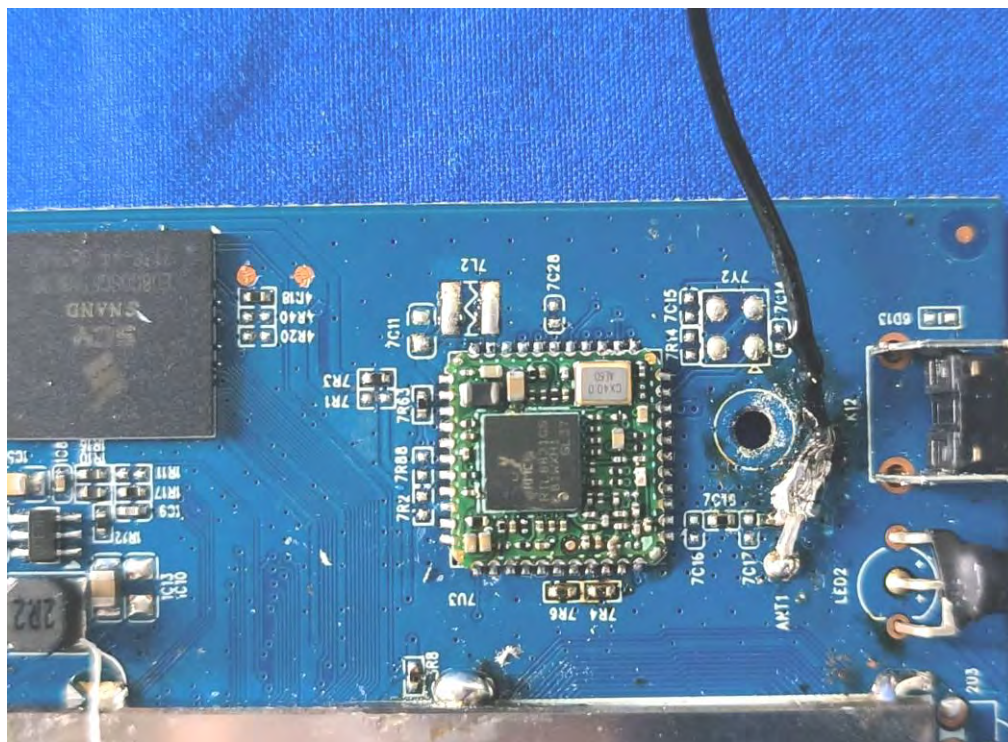
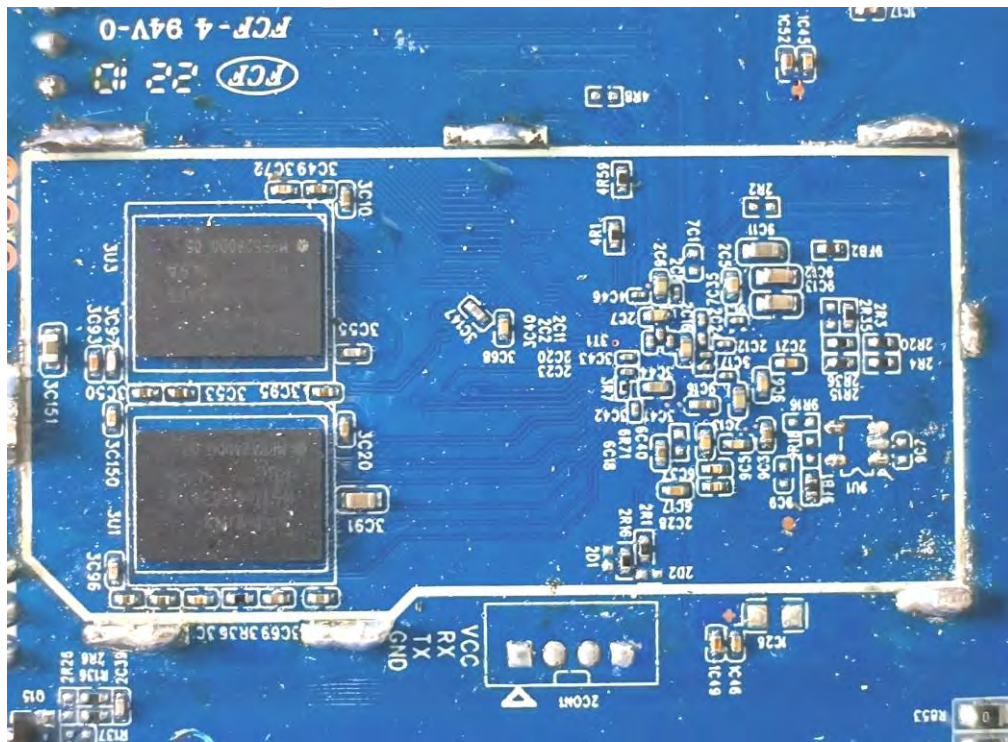


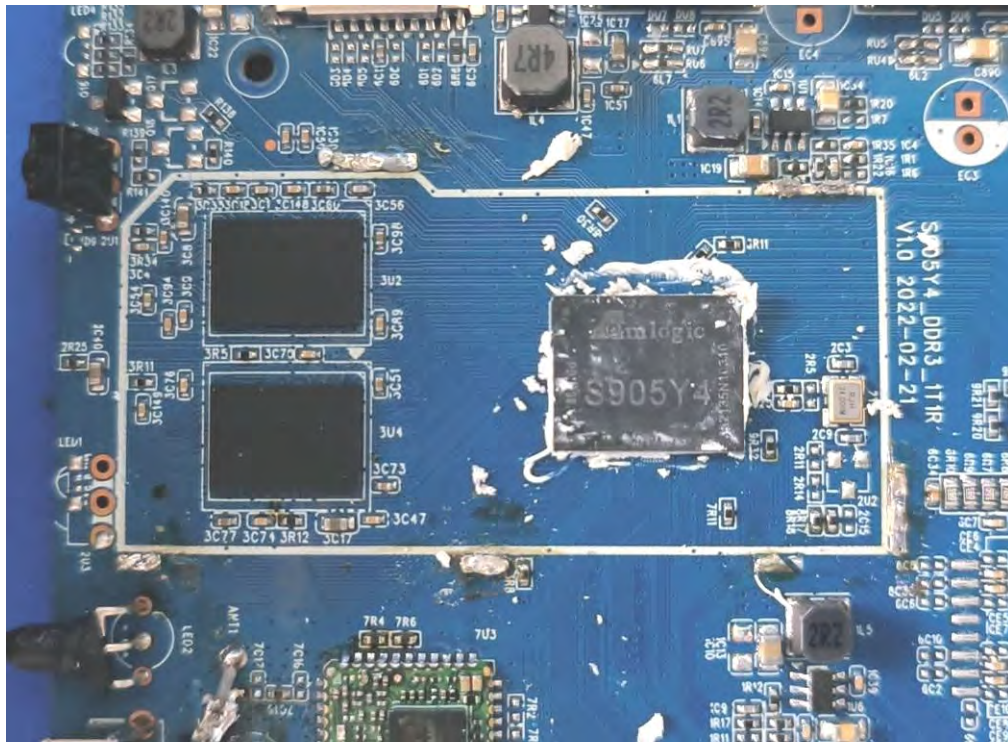




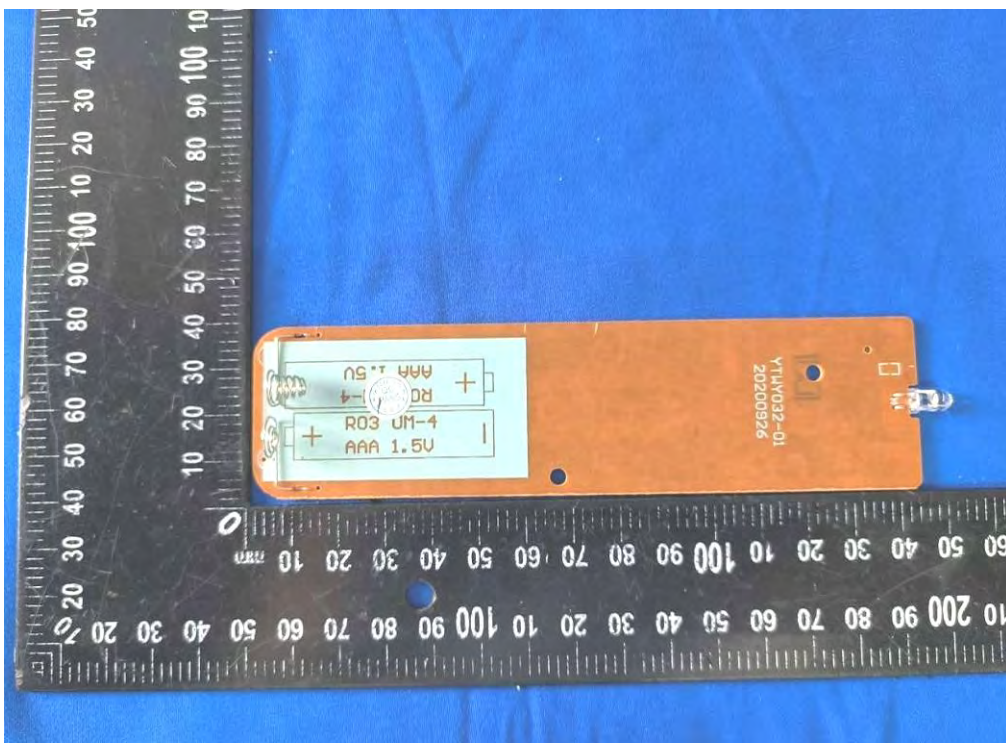
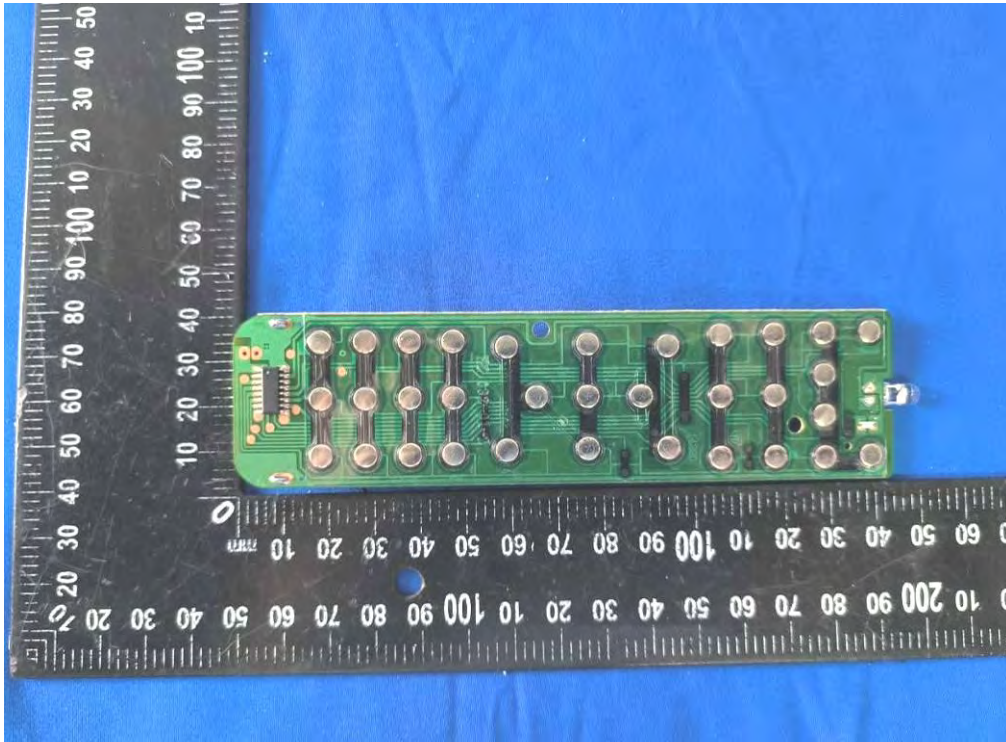












-----THE END OF REPORT-----