

Specification For XiaoAn



About

Use this manual as a guide for application. The photographs, graphics, charts and illustrations and other information are only for the purpose of interpretation and illustration. If there is difference, please refer to the actual product.

Due to product version upgrade or other needs, we may update this manual. If the latest version manual is needed, please contact our aftersales service.

Declaration of liability

To the fullest extent permitted by law, the products described in this manual(including their hardware, software, firmware, etc.) are provided as the product. We make no warranties of any kind/express or implied, including but not limited to warranties of merchantability, satisfactory quality, fitness for a particular purpose, non-infringement of third party rights, etc.; nor shall it be liable for any special ,incidental, incidental or consequential damages arising out of the use of our products, including, but not limited to, damages arising for loss of business profits, loss of data or documentation.

With respect to the use of internet access products (devices that support network connectivity), the use of the products is at your own risk. The Company shall not be

liable for any abnormal operation, privacy leak or other damage caused by cyber-attacks, hacker attacks, virus detection or other Internet security risks; If required, we will provide timely technical support.

Regulatory legal means are influenced by jurisdictions. Before using this product, please check all relevant laws in your jurisdiction to ensure that your use confirms applicable law. The Company shall not be liable if this product is used in conjunction with an illegal product or for other improper purposes such as infringing the rights of third parties.

In the event of a conflict between the contents of this manual and applicable law, the provisions of the law shall prevail.

Overview

"XiaoAn" is a kitchen alarm protect you from dry burning. This product uses thermal imaging technology. By monitoring the temperature of the kitchen stove area, we could warn the danger before it burns, preventing of situations like forgetting to turn off the fire when no one found the fire caused by dry burning. To avoid the loss of life and property caused by the fire, the product is real-time monitor of the temperature in the pot at any time to perceive the temperature of the ingredients. If future version of software, we will add smart-cooking algorithm so that cooking could become a pleasure. Product is easy to use. The connection process only takes three steps. This product can be shared with family member with one click to eliminate the secondary connection. When Product find the risk of dry burning, it can notify you and your family through a variety of channels. Local alarms, WeChat service notifications, and emergency contact SMS notifications are supported. So that users can take care of home safety from mails away.

Features

- 1, Easy to install and operate.
- 2, Long-connect IoT products.
- 3, Local sound react will guide user achieve wi-fi connect within 3 step.
- 4, Continuously monitor the stove temperature after booting.

- 5, Divide the situations into Free, Cooking, Over-heated, Dry-burning and Fire, 5 status. When over-heated the product will push net alarm to user by phone-application.
- 6, When fire risk is detected, alarm will be pushed by SMS and application.
- 7, alarm will be closed when local react or risk is handled.

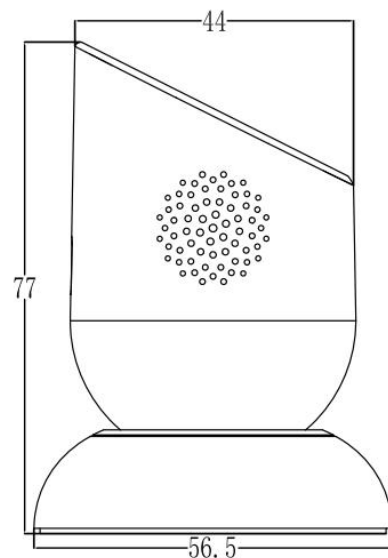
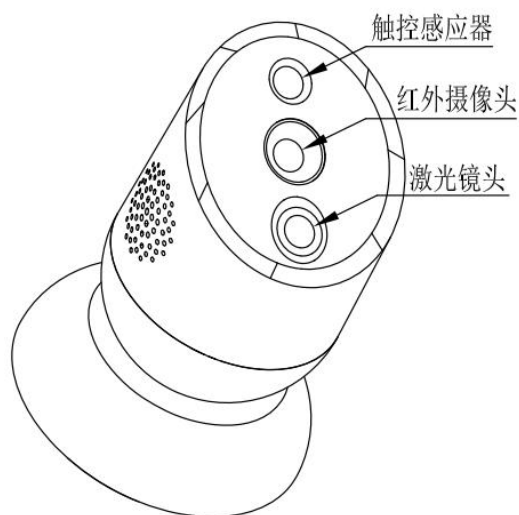
Composition

The whole product contains software and hardware two parts.

- 1, XiaoAn Smart Device x 1

(Contains Wi-Fi module, horn, thermal imaging module)

- 2, Power Adapter x 1



Product Structure Diagram 1

- 3, product should be placed at 1~1.5 meter from the pot with the center aiming the pot refer to below picture.



Specification

Model	Item	Size (unit : mm)
MD-01	XiaoAn Smart Kitchen Alarm	Ø56. 5×77 (H)

Scenarios

This product could be used in kitchen, bedroom and warehouse

Performance

Product name		XiaoAn Smart Kitchen Alarm
Model		MD-01
Thermal	Sensor Type	Thermopile

Imager	Resolution	32*32
	Pixel	90 μm
	Wavelength	8~14 μm
	FOV	33° * 33°
Network	Protocol	TCPIP
Functions	Multi-Target detect	Support
	Overheated Alarm	Support
	Temperature Measurement	Highest Temperature in filed
		Temperature range: 0℃~300℃
		Distance: 0.5m~2.0m
		Accuracy: ±5℃ or 5% *25℃ environment aiming 0.98 Emissivity black body
Common Spec	Operation temperature and Humidity	0℃~40℃ ≤ 85%
	Power Supply	Device: DC 5V-2A Adaptor: 220V
	Power Consumption	200mW(700mW@Alarming)
	Size(mm)	Ø56.5×77(H)
	Weight	100 Gram

Instructions

1. Network Connection

- a) Power the device
- b) Connect user' s phone under the Wi-Fi in home
- c) Turn on the Bluetooth and GPS location function in phone
- d) Enter WeChat and search Median XiaoAn in mini apps as below:



e) Enter the mini app to get the homepage



f) Search device



g) Click the XIAOAN Bluetooth device



h) Enter the Wi-Fi name and password then next step

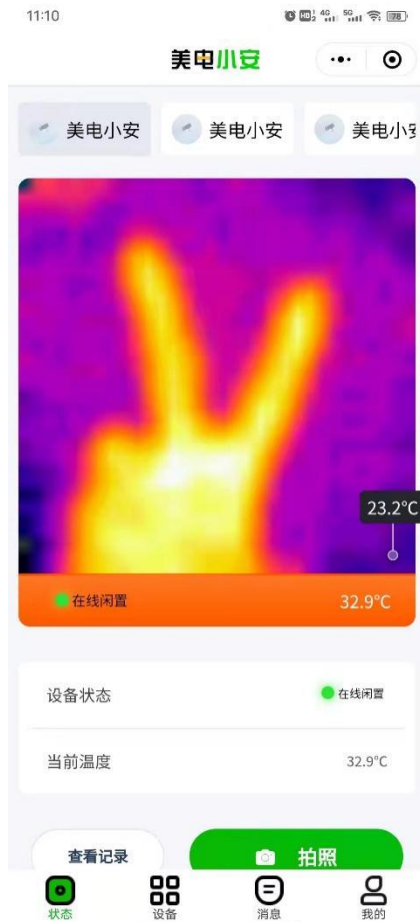


- i) Wait till the connection complete and mini app will jump to homepage

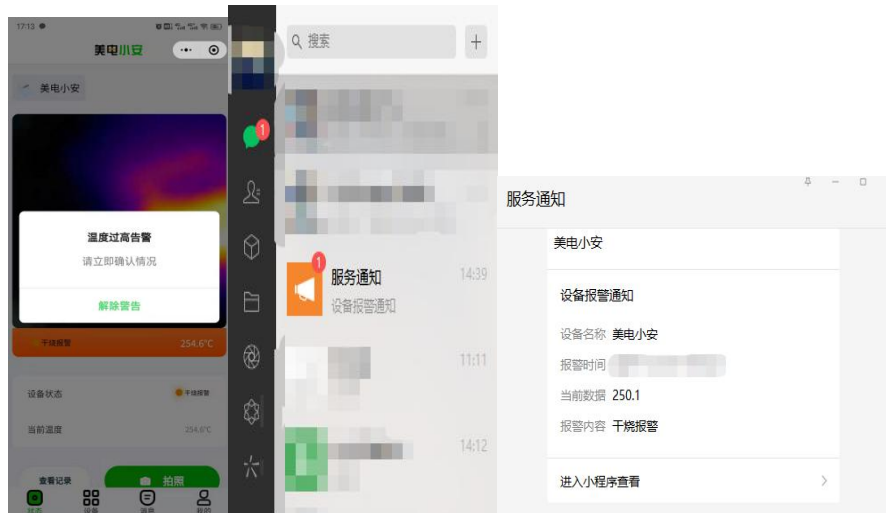


2. Status and Operations

- a) There are 7 statuses for device: Offline, Idle, Cooking, Overheated, Dry-burning, Fire-detect, Fire-alarm. When the device detects statuses change, it will update to your mini app;
- b) Click on camera and the device will save the current temperature to the moments.
- c) Click moments will go to the gallery and see history messages



- d) When detecting high temperature, the product will issue an alarm horn, at the same time the red LED will turn on alternately. The mini app will push an alarm information. You can view the historical information in moments. In the mini app interface, you can cancel the alarm or press the touch button on product. Within 5 mins after canceling the alarm, product will not alarm again.



3. Functional operations

- a) Click "share" you can share device connection to your WeChat friends, your friend could view your device status in same mini app.



- b) Clicking the device can jump into the device details for settings. Here you can set emergency contacts, rename the device, update the firmware, unbind equipment and other details.

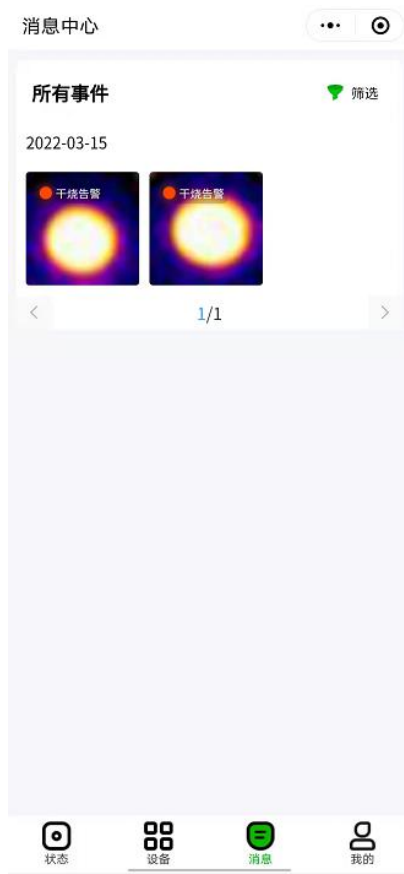
***Emergency will get an SMS message when device give alarm.**



c) One user could connect mutable devices.

4. Moments

a) Enter the moments and you can use the filter to find the information you are interesting in. Filter can also chose different devices.



5. Lighting instructions

Light for different status			
Status	LED color	Laser	LED work mode
Power-on without net	Blue	On	0.5s interval
Restart with connection	Blue	On	0.5s interval
Working without viewer	Blue	Off	On
Working with Viewer	Blue	Off	2s interval
Can' t find Wi-Fi signal	Blue	Off	0.5s interval

Overheated Alarm	Red	Off	0.5s interval
Dry-burning Alarm	Red	Off	0.5s interval

Cautions

1. Do not use the product for other purposes. Users shall take the responsibilities for such consequences.
2. Do not aim the device to sun. the product should be used indoors.
3. Please keep the product in clear and dry environment when not using it.
4. Do not touch the lens directly with finger.
5. The obstruction will cause the measurement result wrong. Please avoid obstruction so that the measurement could get a reasonable result.
6. Do not drop, disassemble, repair and transform the product.
7. Please check the appearance of the product before use,

Package list

No.	Item	Unit
1	Device	1
2	Power Adaptor	1
3	USB type C Power Wire	1
4	Package Box	1
5	Certificate	1

Shenzhen Median Technology Company Limited

Address : Room1601-1603,16/F,Tower A,KaiDAR Group

Center Building,168XiliTongShaRoad,NanShan District,ShenZhen City,Guangdong

Province

ZIP code : 518026

Tel : 0755-82789519

Web : <http://www.mediantec.com>

FCC Requirement

Any changes or modifications not expressly approved by the party responsible for compliance could void the user's authority to operate the equipment.

This device complies with Part 15 of the FCC Rules. Operation is subject to the following two conditions:

- (1) this device may not cause harmful interference, and
- (2) this device must accept any interference received, including interference that may cause undesired operation.

Note: This equipment has been tested and found to comply with the limits for a Class B digital device, pursuant to Part 15 of the FCC Rules. These limits are designed to provide reasonable protection against harmful interference in a residential installation. This equipment generates, uses, and can radiate radio frequency energy, and if not installed and used in accordance with the instructions, may cause harmful interference to radio communications. However, there is no guarantee that interference will not occur in a particular installation. If this equipment does cause harmful interference to radio or television reception, which can be determined by turning the equipment off and on, the user is encouraged to try to correct the interference by one or more of the following measures:

- Reorient or relocate the receiving antenna.
- Increase the separation between the equipment and receiver.
- Connect the equipment into an outlet on a circuit different from that to which the receiver is connected.
- Consult the dealer or an experienced radio/TV technician for help.