

Figure 3 Internal view -1(EXT-I/O version)

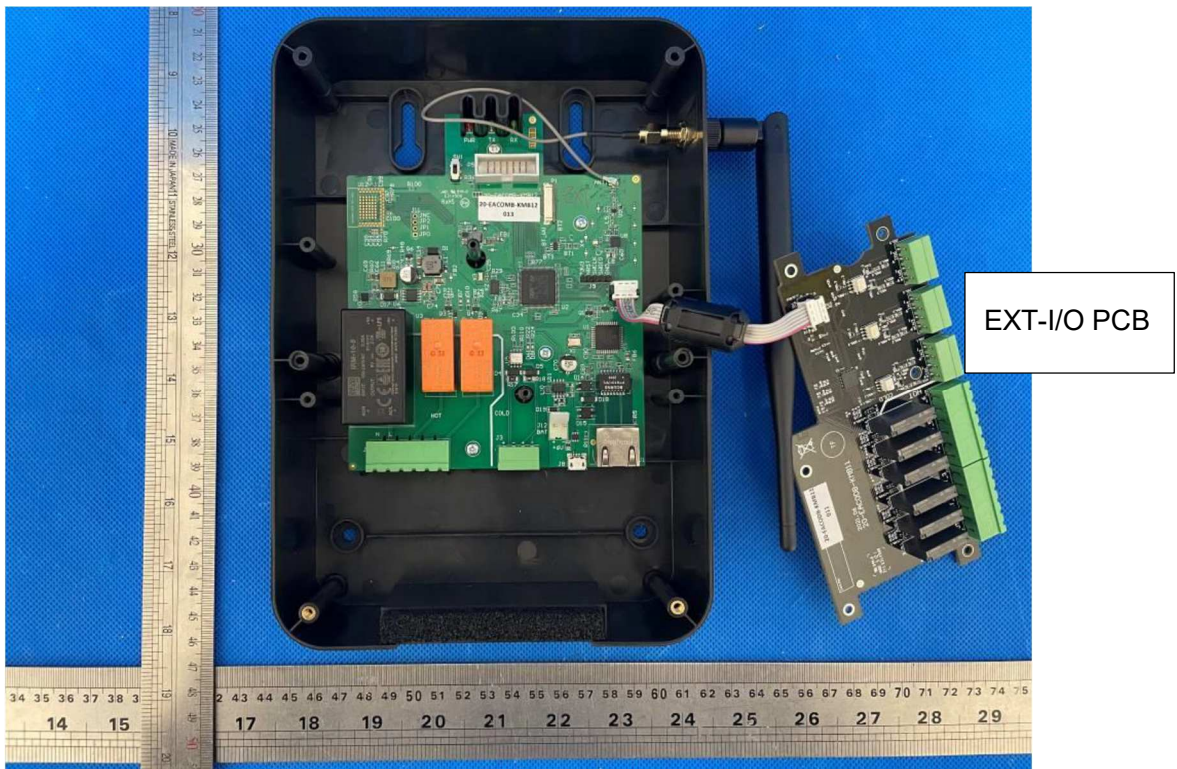


Figure 4 Internal view -2( Standard & EXT-I/O version)

Note: The standard version is identical with EXT-I/O version, except the standard version without EXT-I/O PCB Board.



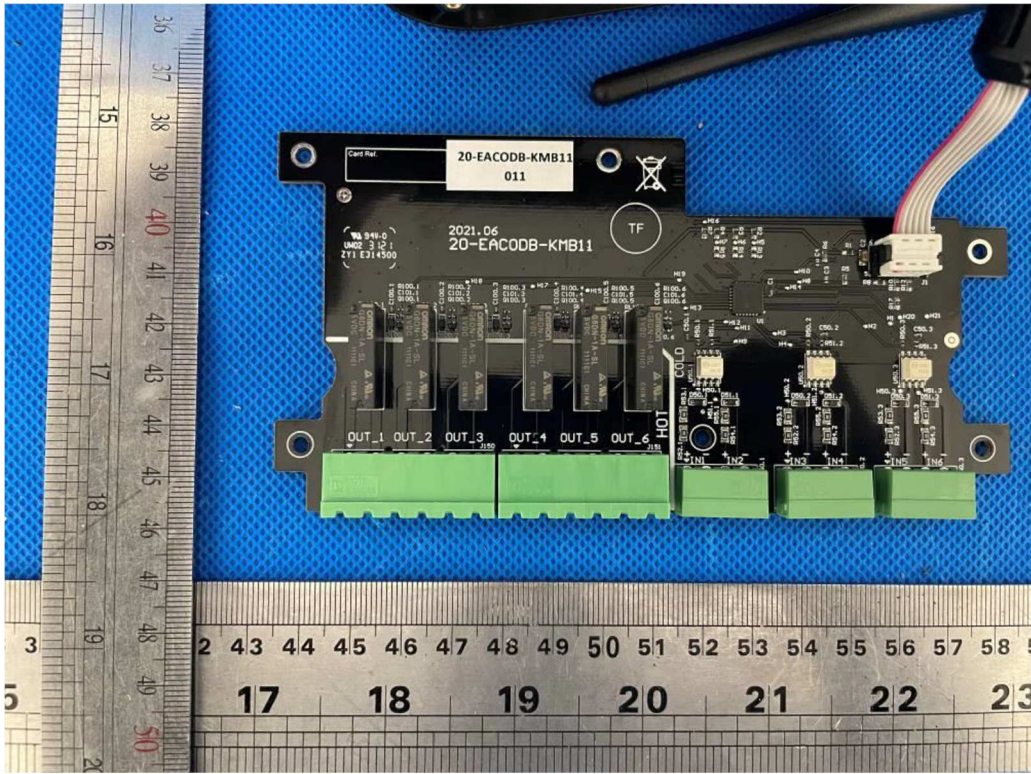


Figure 5 Daughter view -1(EXT-I/O version)

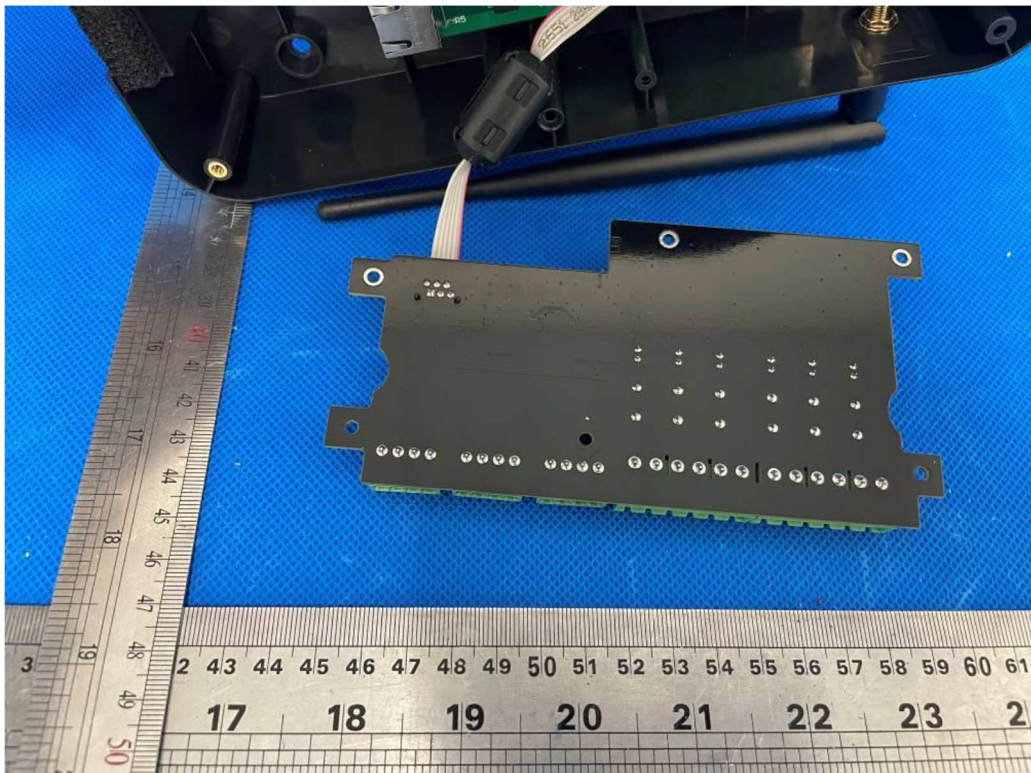


Figure 6 Daughter view -2(EXT-I/O version)



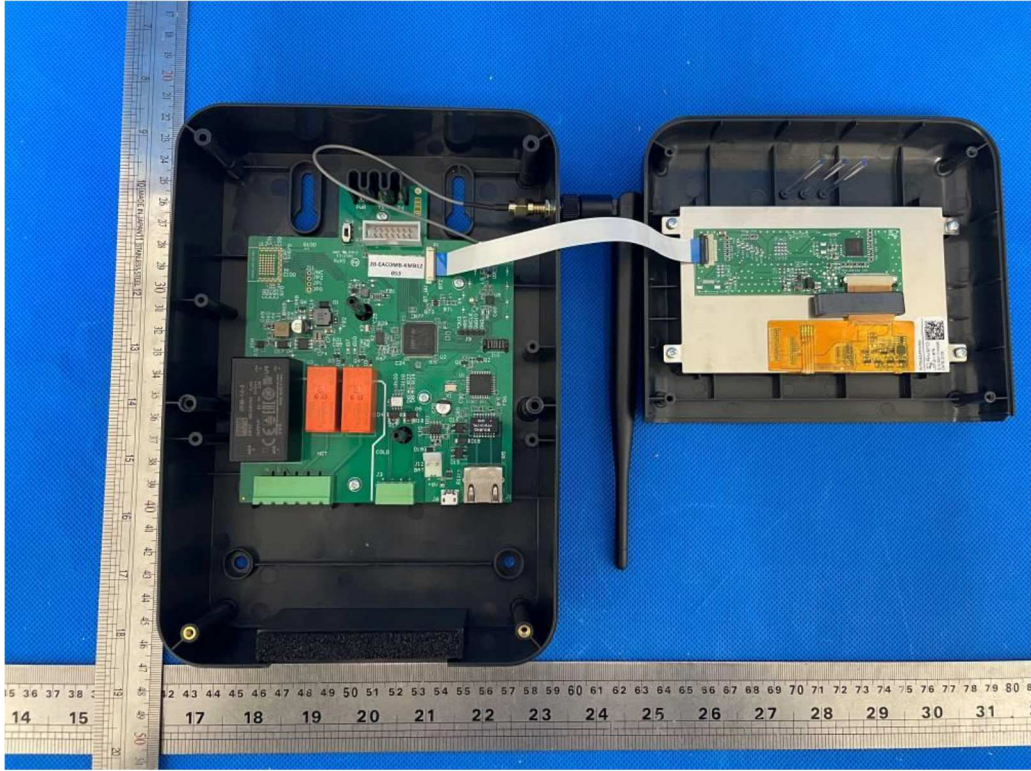


Figure 9 Internal view -1(Display version)

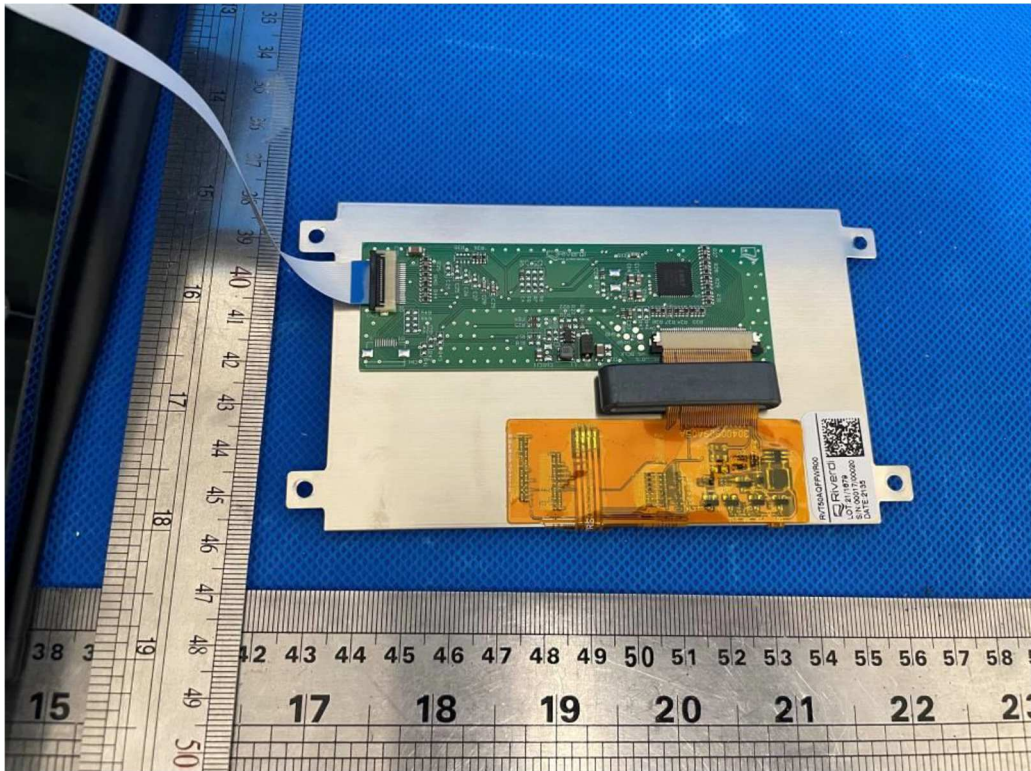


Figure 10 Display board view (Display version)



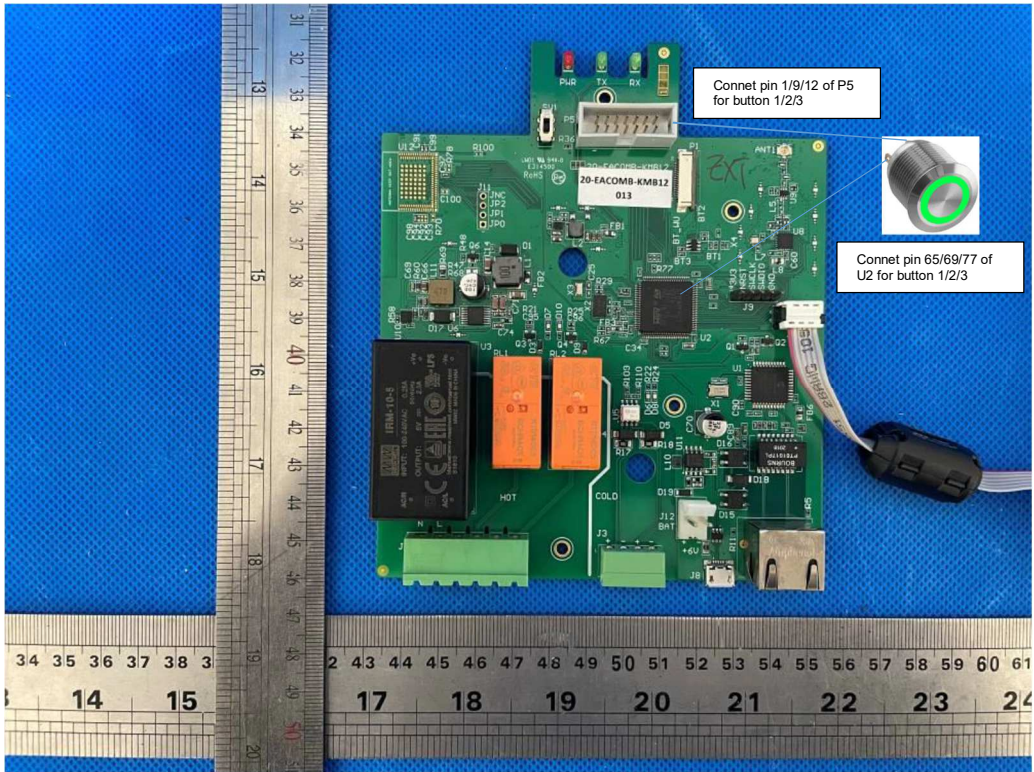


Figure 11 Mother board view -1(All version)

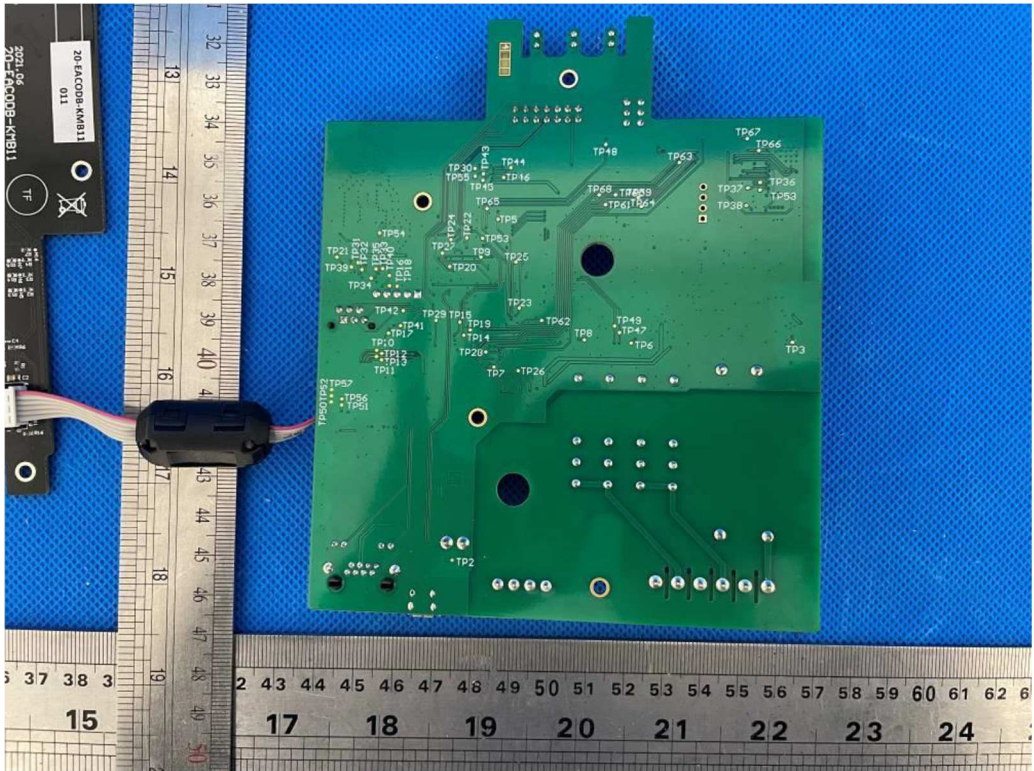


Figure 12 Mother board view -2(All version)