



User Manual

Wi-Fi Smart Lighting



Contents

<u>SettingSmartLifeApp</u>	01
Quick mode Configuration	02
APmodeConfuiuration	03
Howtoconnectsmartdeviceto Alexa/GoogleHome	
<u>WarmTips</u>	09
<u>Warranty</u>	09

SettingSmartLifeApp

Step1:

Method1 , ScanthebelowQRcodeandinstalltheSmartLifeApp.



Method2,Searchfor"SmartLife"todownloadinAppStoreor
GooglePlayandinstall itforiOS/Android.

Tips:ThisApp is compatible with mobile devices IOS 8.0 and
aboveand Android4.0andabove.

Step2:

Launchthe"SmartLife" App,theAppwillaskyoutoregister your
device.

Enteryourphone numberoremailandselectthecountry youlivein

Step3:

Afterinputtingphonenumber,youwillreceiveatextwitharegistration code.

And if you choose email you will be asked tocreateapassword.

Inputthe registration code you received or create password if
emailmethodchosen.

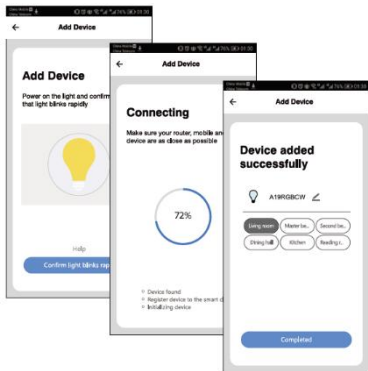
Tips:

FastregisterthroughothercommunicationAppswhichshowonthebottom of
the homepage of"Smart Light" App, such as Facebook,Wechat
Itisrecommendedtoregister

byemailormobilenumberifyouneedtouseAmazonAlexaandGoogleHom
eforvoice control.

QuickmodeConfiguration(Recommend)

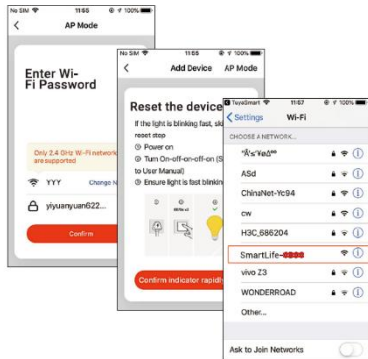
1. Before connecting, please make sure your smartphone or device is connecting with your home Wi-Fi successfully.
2. To connect in quick mode configuration, the light needs to be set to flash rapidly. (You can learn the detailed instruction on "How To Make Light Blinks Rapidly" from inner page of "SmartLife" App)
3. Open App and click "+" to add device.
4. Follow the in-App instruction to connect the smart device to your Wi-Fi network [2.4GHz].



5. Once connected, the App will prompt the connection.
6. Now you can control the smart device through "SmartLife" App.

APmodeConfiguration

1. Before connecting, please make sure your smart phone or device is connecting with your home Wi-Fi [2.4GHz].
2. Make sure AP mode configuration is initiated: power on the light and confirm that light blinks slowly. (How to make light slowly blink, please check the inner-App instruction)
3. Select device type and click AP mode to Add device.
4. Go to Wi-Fi setting in your smart phone and select the "SmartLite-xxx" for your Wi-Fi.



4. Once connected successfully, the App will prompt the connection, and click "Done".
5. Now you can control the smart device through "SmartLife" App.

How to connect smart device to Alexa/Google Home

Before you start, make sure that your smart device is connected with WIFI and can be controlled by App. You have an Alexa-enabled device (Echo, Echo dot, etc.), or a device enabled with Google Assistant (Google Home, etc.). The Alexa App or the Google Home App which is already installed on your smartphone and you have created an account.



2. On the "Skills" page, search for "SmartLife":

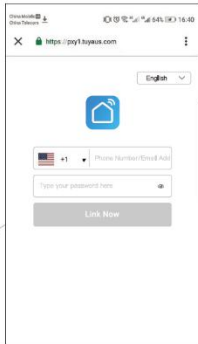


3. Enable it in Alexa APP.



To control your device with Amazon Alexa:
1. Open the Alexa App and select "Skills" from the menu in the top left corner of the home page.

4. Login with your "SmartLife" account to authorize Alexa to access to your account.



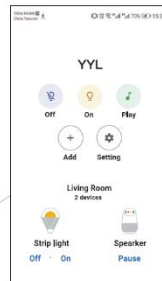
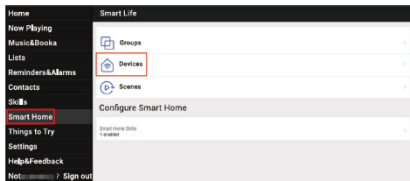
After your smart device is connected with Alexa successfully, you can simply ask Alexa to set your device like this

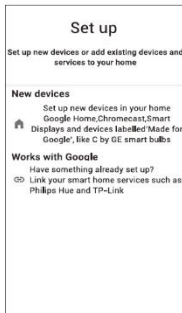
- Alexa, turn on <device name>
- Alexa, turn off <device name>
- Alexa, set <device name> to percent
- Alexa, brighten/increase <device name>
- Alexa, dim/decrease <device name>
- Alexa, set <device name> to (color)
- Alexa, set <device name> to (color temperature)
- Alexa, make/set <device name> warmer
- Alexa, make/set <device name> cooler

To control your devices with Google Home:

1. Open the Google Home App, tap the "+" icon in the homepage, then select "Setup device" in the "Add and manage" page
2. In the "Set up" page, tap "New devices" to set up new devices in your home, like your Google Home speaker and smart lighting products. Tap "Works with Google" to authorize the Google Home with your "SmartLife" account.

5. Discover new smart devices via the "Smart Home" menu in the Alexa App or Alexa voice control. Now you can control your smart device through Alexa





4. After successful configuration, say simple commands to Google Home to control the light with your voice like this:

- Ok Google, turn on <devicename>
- Ok Google, turn off <devicename>
- Ok Google, is <devicename> on/off?
- Ok Google, set <devicename> to percent
- Ok Google, brighten/increase <devicename>
- Ok Google, dim/decrease <devicename>
- Ok Google, Dim/Brighten <lightname> by 50%
- Ok Google, set <devicename> to (color)
- Ok Google, set <device name> to (color temperature)
- Ok Google, turn on/off lights in <roomname>
- Ok Google, Turn on/off all of the lights
- Ok Google, Start <scenename>
- Ok Google, Activate <scenename>.

Warm Tips

- Please check whether the device is connected with power and your phone is connected with Wi-Fi.
- Check routers: If the router is dual-band router, please select a 2.4GHz network to add device. You also need to open the router broadcasting function.
- Set up the wireless router: Set encryption method as WPA2-PSK authorization type as AES, or set both as auto. The Wireless mode cannot be only 5GHz.
- Please name router Wi-Fi in English. In order to stay strong Wi-Fi signal, please keep device and router within a certain distance.
- Check whether connected devices have reached the maximum number of router connection. If so, please try to turn off the Wi-Fi connection of some devices.
- If the router uses DHCP service, ensure that the assigned IP address is greater than the number of devices before connecting the device.
- Make sure router wireless MAC filtering function is enabled.
- Remove the device from the filter list and make sure that router is not prohibiting device from connection.
- Make sure the entered password is correct when adding a new device.
- The instructions in this manual are for your reference only. The App will be updated from time to time. Always follow the instructions in the App to complete Wi-Fi setup and know more about the functions.
- Use proper commands when talking to Alexa/ Google Home, repeat your questions, speak clearly to Alexa/ Google Home in English.
- If you can not control the devices with Alexa/ Google voice control, check if you modified the name of devices in "Smart Life" App, if yes, you need to rediscover the device through Alexa/ Google App.

Warranty

The product carries a three-year warranty from purchase date. Please feel free to contact us when you have any product problem or suggestions. We take care of all quality-related issues with a REPLACEMENT OR FULL REFUND.

FCC Statement:

- This equipment has been tested and found to comply with the limits for a Class B digital device, pursuant to part 15 of the FCC Rules. These limits are designed to provide reasonable protection against harmful interference in a residential installation. This equipment generates, uses and can radiate radio frequency energy and, if not installed and used in accordance with the instructions, may cause harmful interference to radio communications. However, there is no guarantee that interference will not occur in a particular installation. If this equipment does cause harmful interference to radio or television reception, which can be determined by turning the equipment off and on, the user is encouraged to try to correct the interference by one or more of the following measures:
 - -- Reorient or relocate the receiving antenna.
 - -- Increase the separation between the equipment and receiver.
 - -- Connect the equipment into an outlet on a circuit different from that to which the receiver is connected.
 - -- Consult the dealer or an experienced radio/TV technician for help.
- Changes or modifications not expressly approved by the party responsible for compliance could void the user's authority to operate the equipment.

RF Exposure Statement

The distance between user and products should be no less than 20cm.