

# User Manual

## LED Fixed luminaires

### Wi-Fi Smart Lighting



## Contents

Setting Smart Life App	01
Quick mode Configuration	02
Control Devices-Individual Control	04
Control Devices-Group Control	05
Home/Member Management	06
Personal- Modify Login Password	07
How to connect smart device to Alexa/Google Home	08
Warm Tips	13
Warranty	13

## Setting Smart Life App

Step 1:

Method 1, Scan the below QR code and install the Smart Life App.



Method 2, Search for "Smart Life" to download in App Store or Google Play and install it for iOS/Android.

Tips: This App is compatible with mobile devices IOS 8.0 and above and Android 4.0 and above.

Step 2:

Launch the "Smart Life" App, the App will ask you to register your device.

Enter your phone number or email and select the country you live in.

Step 3:

After inputting phone number, you will receive a text with a registration code. And if you choose email you will be asked to create a password.

Input the registration code you received or create password if email method chosen.

Tips:

Fast register through other communication Apps which show on the bottom of the homepage of "Smart Light" App, such as Facebook, Wechat.

It is recommended to register by email or mobile number if you need to use Amazon Alexa and Google Home for voice control.

-01-

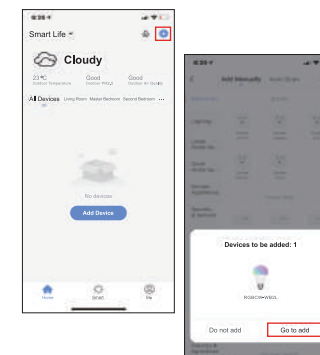
## Quick mode Configuration (Recommend)

1. Before connecting, please make sure your smart phone or device is connecting with your Wi-Fi successfully, and open the bluetooth in the same time.

2. Turn ON-OFF the smart light for 3 times until it blinks rapidly. (If the smart light blinks rapidly when turn on the power, it means it's ready for configuration already.)

3. Open the App and click "+" to add device.

4. The device will be showed on the page automatically, click "Go to add".



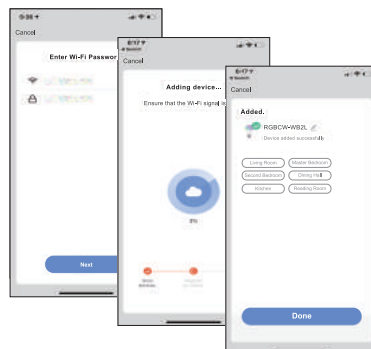
-02-

5. Choose your Wi-Fi and enter password.

6. It shows the process of adding device to the App, only when 100% it means the device added to the App, otherwise it means there's problem of the Wi-Fi, you may need to fix the router or change other Wi-Fi.

7. When the device is added, you can edit its name, choose its location, then click "Done".

8. Now you can control the smart device through "Smart Life" App.



-03-

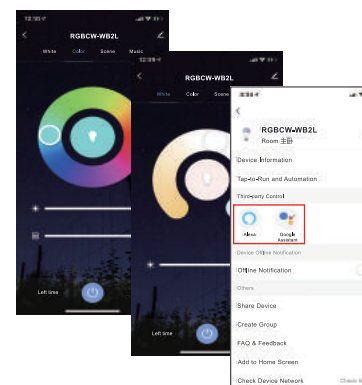
## Control Devices-Individual Control

1. Click the smart light on the homepage to open control panel.

2. When the control panel is dark, it means the light is OFF status and only the timer can be accessed.

3. Click the button to turn on the light, there are four columns "White" "Color" "Scene" "Music" can be choosed, then DIY your smart light on your request.

4. Click "⌵" at the top right corner of control panel to manage the smart light individually.



5. Click "Alexa" or "Google Assistant", there will be detailed instructions of how to realize voice control.

-04-

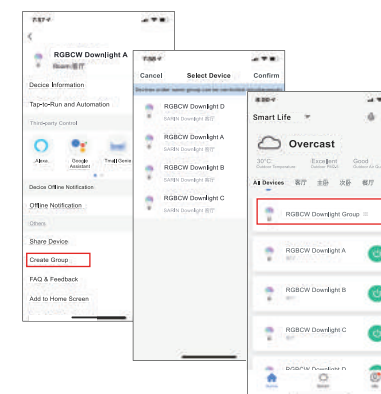
## Control Devices - Group Control

1. On the individual control page, click "Creat Group".

2. Select the smart lights which you would like to group control and click "Save", enter group name and confirm.

3. Operate the lights by group at the group control panel, click "⌵" at top right corner to configure or dismiss groups.

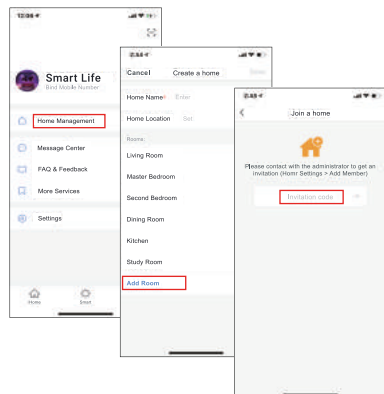
4. The group that have been created can be viewed at homepage and managed with hotkey.



-05-

## Home/Member Management

1. Click "Me"-">"Home Management"->"Create a Home"page.
2. Set your "Home Name" and "Home Location".
3. Click "Add Room" to add a room if needed.
4. If you want to join a home, please contact with administrator to get an invitation code, enter it and confirm.



-06-

## Personal-Modify Login Password

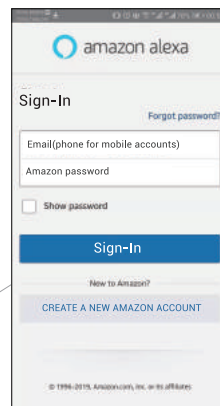
1. Click "Me"-">"Settings"->"Account"->"Account and Security"-> activate "Pattern Lock", and set a patten password.
2. You will have to use the patten to access the App when you open it every time.
3. Click "Forgot patten lock" if you forget your patten password,it will help to set a new one.



-07-

## How to connect smart device to Alexa/ Google Home

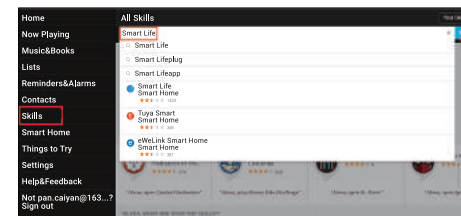
Before you start, make sure that:  
Your smart device is connected with WIFI and can be controlled by App.  
You have an Alexa-enabled device(Echo, Echo dot, etc.), or a device enabled with Google Assistant(Google Home, etc.).  
The Alexa App or the Google Home App which is already installed on your smart phone and you have created an account.



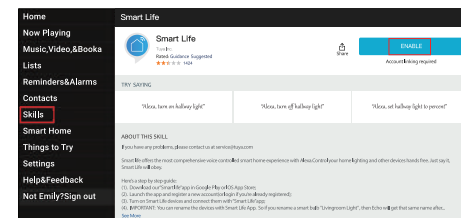
### To control your device with Amazon Alexa:

- 1.Open the Alexa App and select "Skills" from the menu in the top left corner of the homepage.

- 2.On the "Skills" page, search for "Smart Life".

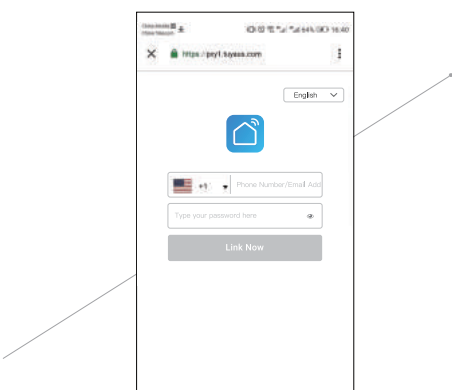


- 3.Enable it in Alexa APP.

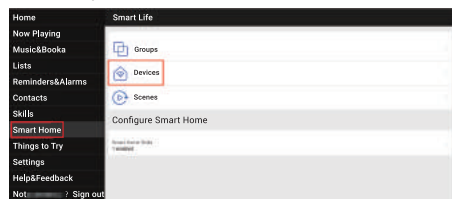


- 4.Login with your "Smart Life" account to authorize Alexa to access to your account.

-09-



- 5.Discover new smart devices via the "Smart Home" menu in the Alexa App or Alexa voice control. Now you can control your Smart device through Alexa.



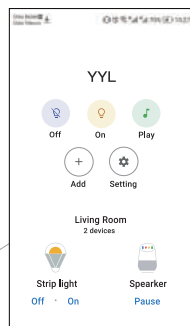
-10-

After your smart device is connected with Alexa successfully, you can simply ask Alexa to set your device like this:

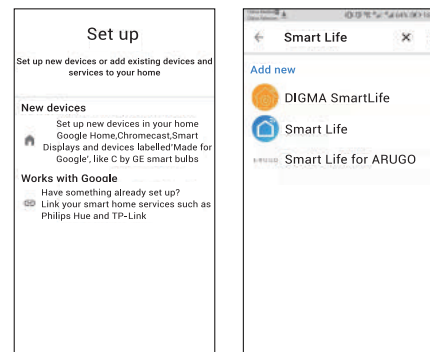
- Alexa, turn on < device name >
- Alexa, turn off < device name >
- Alexa, set < device name > to percent
- Alexa, brighten/increase < device name >
- Alexa, dim/decrease < device name >
- Alexa, set < device name > to(color)
- Alexa, set < device name > to (color temperature)
- Alexa, make / set < device name > warmer
- Alexa, make / set < device name > cooler

### To control your device with Google Home:

- 1.Open the Google Home App, tap the "+" icon in the homepage,then select "Set up device" in the "Add and manage" page.
- 2.In the "Set up" page, tap "New devices" to set up new devices in your home, like your Google Home speaker and smart lighting products. Tap "Works with Google" to authorize the Google Home with your "Smart Life" account.



-11-



- 3.After successful configuration, say simple commands to Google Home to control the light with your voice like this:

- Ok Google, turn on < device name >
- Ok Google, turn off < device name >
- Ok Google, is < device name> on / off ?
- Ok Google, set < device name > to percent
- Ok Google, brighten/increase < device name >
- Ok Google, dim/decrease < device name >
- Ok Google, Dim/Brighten <light name> by 50%
- Ok Google, set < device name > to ( color)
- Ok Google, set < device name > to (color temperature)
- Ok Google, turn on / off lights in <room name>
- Ok Google, Turn on/off all of the lights
- Ok Google, Start < scene name >
- Ok Google, Activate < scene name >.

-12-

## Warm Tips

- Please check whether the device is connected with power and your phone is connected with Wi-Fi.
- Check routers: If the router is dual-band router, please select a 2.4GHz network to add device. You also need to open the router broadcasting function.
- Set up the wireless router: Set encryption method as WPA2-PSK authorization type as AES, or set both as auto. The Wireless mode cannot be only 5GHz.
- Please name router Wi-Fi in English. In order to stay strong Wi-Fi signal. Please keep device and router within a certain distance.
- Check whether connected devices have reached the maximum number router connection. If so, please try to turn off the Wi-Fi connection of some devices.
- If the router uses DHCP service, ensure that the assignalole IP address is greater than the number of devices before connecting the device.
- Make sure router wireless MAC filtering function is enabled.
- Remove the device from the filter list and make sure that router is not prohibiting device from connection.
- Make sure the entered password is correct when adding a new device.
- The instructions in this manual are for your reference only. The App will be updated from time to time. Always follow the instructions in the App to complete Wi-Fi setup and know more about the functions.
- Use proper commands when talking to Alexa/ Google Home, repeat your questions, speak clearly to Alexa/Google Home in English.
- If you can not control the devices with Alexa/ Google voice control, check if you modified the name of devices in "Smart Life" App, if yes, you need to rediscover the devices through Alexa/ Google App.

## Warranty

The product carries a three-year warranty from purchase date. Please feel free to contact us when you have any product problem or suggestions. We take care of all quality-related issues with a REPLACEMENT OR FULL REFUND.

-13-

This device complies with part 15 of the FCC Rules. Operation is subject to the following two conditions: (1) This device may not cause harmful interference, and (2) this device must accept any interference received, including interference that may cause undesired operation.

**FCC warning:**

Any Changes or modifications not expressly approved by the party responsible for compliance could void the user's authority to operate the equipment.

Note: This equipment has been tested and found to comply with the limits for a Class B digital device, pursuant to part 15 of the FCC Rules. These limits are designed to provide reasonable protection against harmful interference in a residential installation. This equipment generates uses and can radiate radio frequency energy and, if not installed and used in accordance with the instructions, may cause harmful interference to radio communications. However, there is no guarantee that interference will not occur in a particular installation. If this equipment does cause harmful interference to radio or television reception, which can be determined by turning the equipment off and on, the user is encouraged to try to correct the interference by one or more of the following measures:

- Reorient or relocate the receiving antenna.
- Increase the separation between the equipment and receiver.
- Connect the equipment into an outlet on a circuit different from that to which the receiver is connected.
- Consult the dealer or an experienced radio/TV technician for help.

This equipment complies with FCC radiation exposure limits set forth for an uncontrolled environment. This equipment should be installed and operated with minimum distance 20cm between the radiator & your body.

**IC warning**

- English:

This device complies with Industry Canada licence-exempt RSS standard(s).

Operation is subject to the following two conditions: (1) This device may not cause interference, and (2) This device must accept any interference, including interference that may cause undesired operation of the device.

- French:

Le présent appareil est conforme aux CNR d'Industrie Canada applicables aux appareils radio exempts de licence.

L'exploitation est autorisée aux deux conditions suivantes:

- (1) l'appareil ne doit pas produire de brouillage, et
- (2) l'utilisateur de l'appareil doit accepter tout brouillage radioélectrique subi, même si le brouillage est susceptible d'en compromettre le fonctionnement.

This equipment complies with IC RSS-102 radiation exposure limits set forth for an uncontrolled environment. This equipment should be installed and operated with minimum distance 20cm between the radiator & your body.

Cet équipement est conforme aux limites d'exposition aux rayonnements IC établies pour un environnement non contrôlé. Cet équipement doit être installé et utilisé avec un minimum de 20cm de distance entre la source de rayonnement et votre corps.