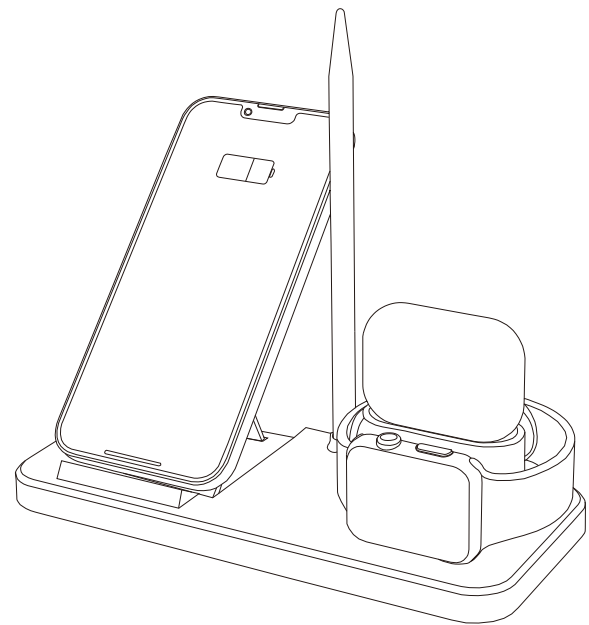


尺寸：105x148mm
材质：100g书纸
工艺：单黑双面印刷 骑马钉

User Manual

4 in1 Charging Station for AirPods,
Apple Watch,CellPhone
HTY-2128



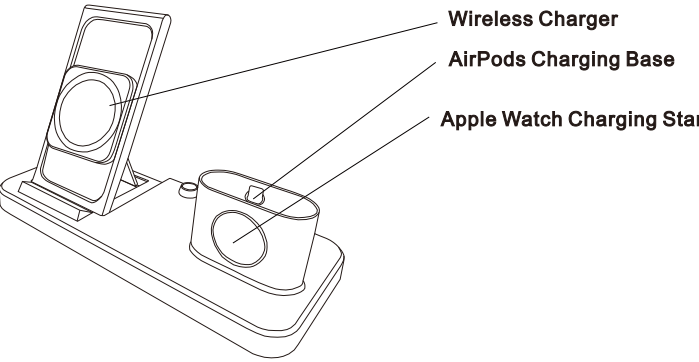
Thank you for purchasing this product.Please read this manual
carefully before use to get the correct usage and storage method.
Hope you have a pleasant shopping experience.

Features

1. Fast wireless charging and USB-C charging,AirPods charging stand and Apple Watch charging stand multifunctional in one,which can realize wireless phone fast charging and ordinary USB charging at the same time, and charge AirPods and Apple Watch at the same time. The mobile phone model can be intelligently identified, and the wireless charging supports 10W/15Wfast charging, 7.5W Apple fast charging, and 5W ordinary charging.
2. Adopting a retractable structure,the charging cables of AirPods and Apple Watch are hidden in the casing, the whole product is more concise, and the desktop will not be messy.
3. The mobile phone wireless charging coil is far away from the heat source to better improve the charging efficiency. It can be charged upright or down, which is convenient and fast.
4. Designed a charging location for AirPods and Apple Watch. AirPods is plug and charge. The base is compatible with new and old AirPods and dose not block the screen of Apple Watch.
5. Built-in magnetic isolation sheet for wireless charging, increase the magnetic flux of the coil, the conversion rste can reach 80%. The built-in circuit is equipped with multiple protections, over-voltage protection, input over-current protection, output over-current protection, anti-ripple, short circuit protection, anti-electromagnetic protection and anti-static protection, charging is safer.

Product Specifications

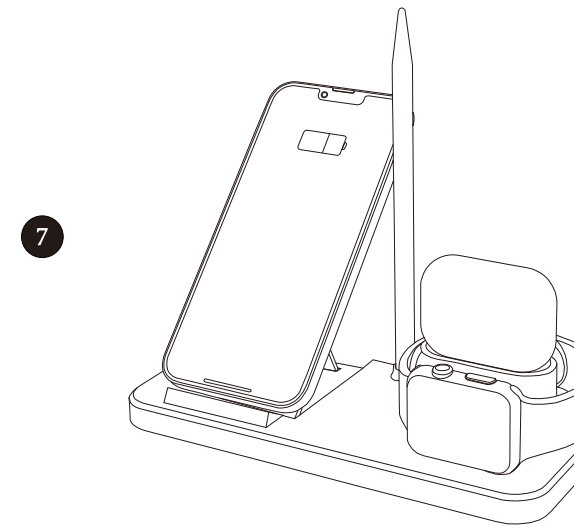
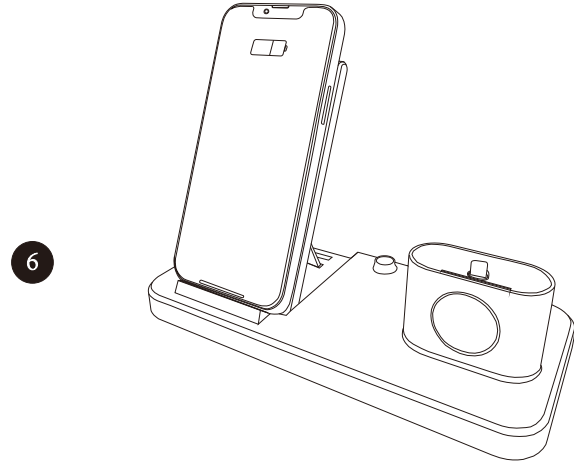
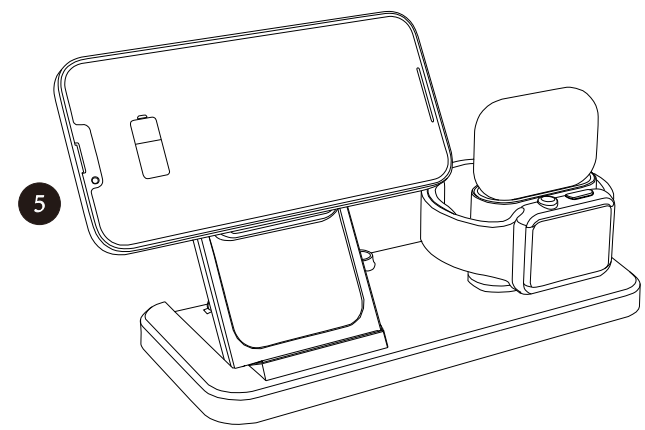
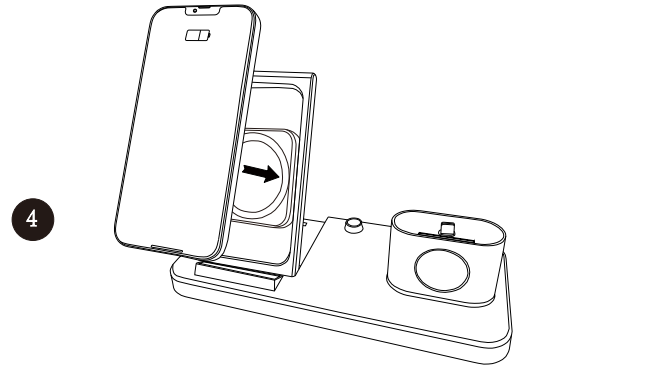
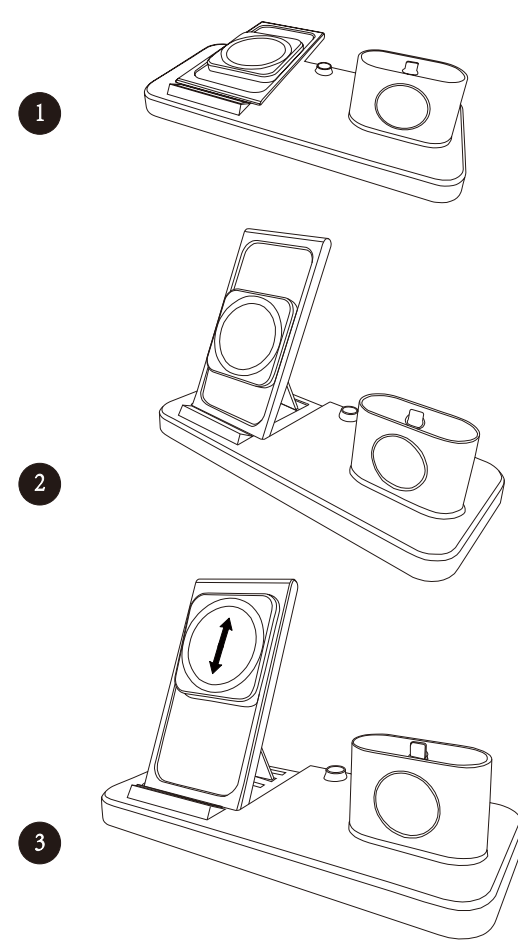
Model:HTY-2128
Name:4 in1 Charging Station for AirPods,Apple Watch,CellPhone
Material:ABS + PC (anti-flame retardant)
Weight: 0.55(lb)
Dimensions: 211*153*55.5(mm)
Input Voltage:Adapter:100-240V AC 50 / 60HZ Station:9VDC 4A
Output Power: 15W (5V 3A) + (15W,10W,7.5W,5W) (varies according to different mobile phone models)
Wireless Charging Distance: 3-8mm



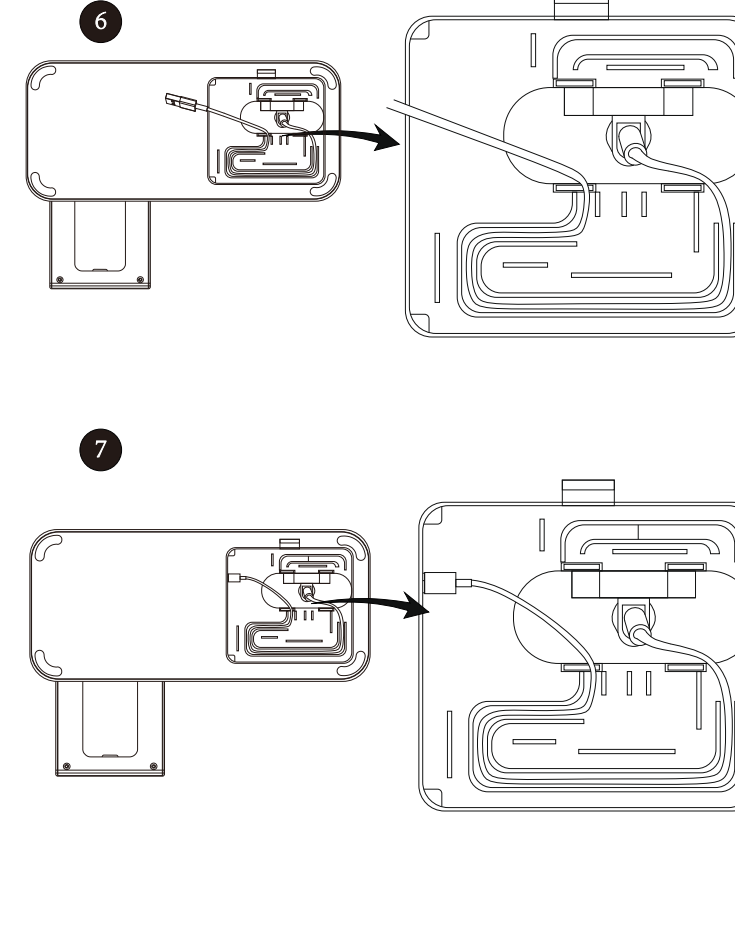
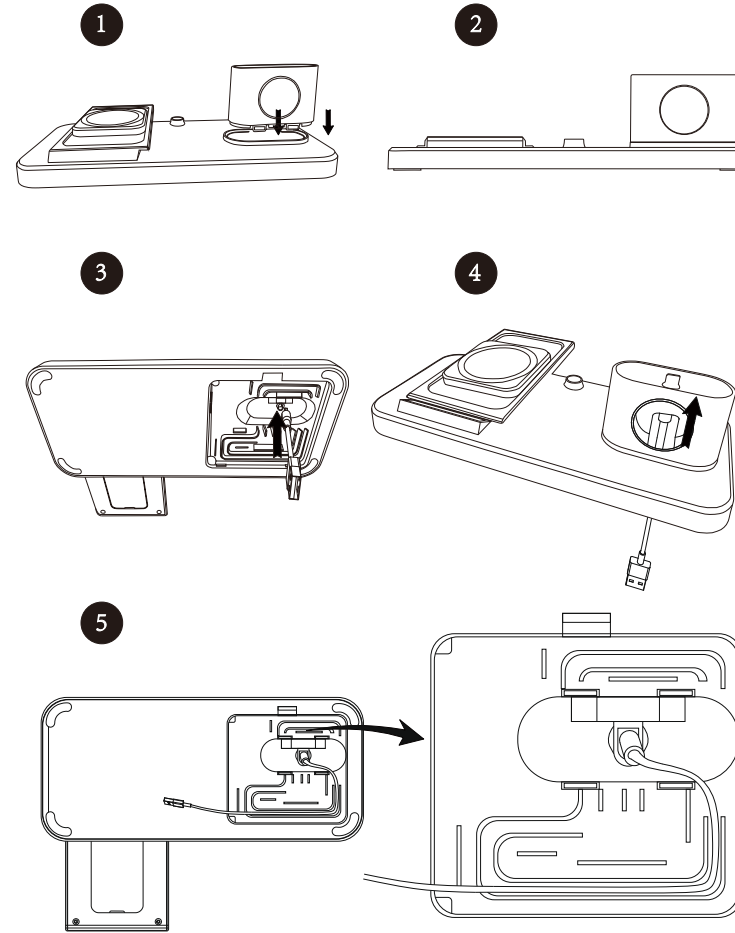
USB-C Charging
Port 5V 3A (MAX)

DC Input Interface

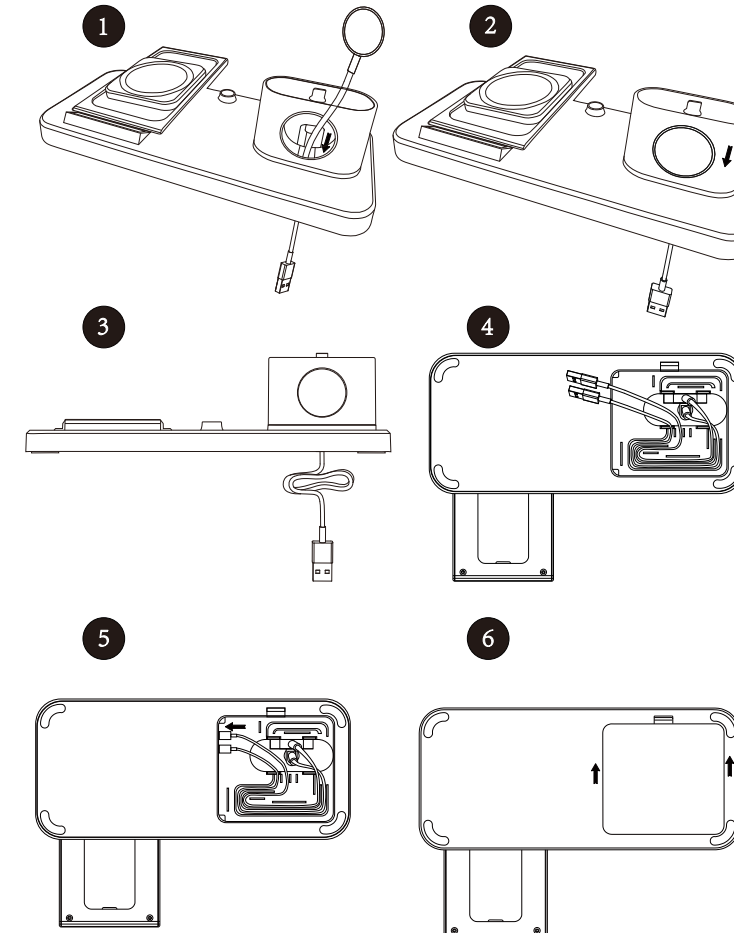
Cellphone Charging Schematic Diagram



AirPods Charging Base Assembly Steps



Apple Watch Charging Stand Assembly Steps



NOTE

1. Please check whether the charged device is compatible with the product voltage firstly.
2. Before using the wireless charger, please check whether there is a metal object on the back of the phone.When there is a metal piece or other metal material on the back of the charged phone,the wireless charger will start up the FOD foreign object detection function and the phone will not be charged normally.
3. To ensure safety and efficiency, it is strongly recommended to use the original charging cable or a third-party certified charging cable to power the device.
4. Only using for indoor and dry environment, avoid using in high temperature, humidity and oily environment. It is forbidden to use after seeping liquid or throwing into fire. Pay attention to moisture and waterproof.
5. It is strictly forbidden to place the product in a strong magnetic field environment.
6. Avoid placing it in the reach of infants and children.
7. Non-professionals are not allowed to disassemble and repair without authorization

Package List

- USB-C Charging Station * 1
- Manual * 1
- AC-DC Adapter *1
- USB Charging Cable * 1

Wireless charging compatible with mobile phone models

Apple: iPhone13/ iPhone13 pro/ iPhone13 pro max/ iPhone12/ iPhone12 pro/ iPhone12 pro max/ iPhone11/ iPhone11 pro/ iPhone11 pro max/ iPhone x/ iPhone xs/iPhone xs max/ iPhone XR/ iPhone8 / iPhone 8 Plus
Samsung: Galaxy S10/Galaxy S10+/Galaxy S9/Galaxy S9+/Galaxy S8/Galaxy S8+/Galaxy S7/Galaxy S7 edge/Galaxy S6/Galaxy S6 edge
Nokia: Lumia Series 735/820/822/830/920/929/1020/1520
SONY: Z3V/Z4V
Google: Nexus 4/Nexus 5/Nexus 6/Nexus 7
LG: G pro/G2 (US Version) /G3(US Version)
MOTO: Droid 5
HTC: One Mini 2/One M8 Eye(Mobile 4G/M3E1) /One E8(E9t Mobile 4G) /Butterfly3(Mobile 4G)/HTC Droid DNA(US Version)/HTC 8X(US Version) /Butterfly(US Version)

FCC Caution: Any changes or modifications not expressly approved by the party responsible for compliance could void the user's authority to operate this equipment.

This device complies with Part 15 of the FCC Rules. Operation is subject to the following two conditions:
(1) This device may not cause harmful interference, and
(2) this device must accept any interference received, including interference that may cause undesired operation.

FCC RF exposure statement:
The equipment complies with FCC Radiation exposure limit set forth for uncontrolled environment. This equipment should be installed and operated with minimum distance 20cm between the radiator and your body.