

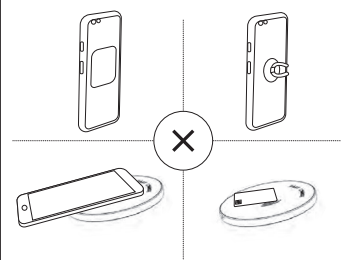
Connect a USB wall charger to the wireless charging Pad. When the charger is correctly connected to the wireless charging Pad the indicator light flashes blue, green and cyan then turns off.

2



Place your phone on the center of the pad for charging.

3



colour	status
Blue→green → cyan	when connected to a power outlet
Blue	when charging
green	when fully charged
cyan	when charging at low power(less than 5V/2A)
Flashing blue	when not charging properly due to a general error
off	when the mobile device is removed from the wireless charger when the wireless charger is not connected to a power outlet

- If the indicator light does not work as described, disconnect the charger from the wireless charger and reconnect it
- The indicator light may work differently depending on the mobile device or the wireless charging cover

Package Content:
Fast Wireless charging PAD
Micro USB power cable
User's manual

- Use fast charger (5V/2A, and 9V/2A) or Qualcomm quick charge USB wall charger. When using a normal USB wall charger, it works in normal wireless charging mode.
- To charge a mobile device that does not have a built-in wireless charging coil, attach a wireless charging cover to the mobile device. Then place the mobile device on the wireless charger pad.
- Wireless charging may not work properly if you have attached a thick case to your mobile device. If your case is thick, remove it before placing your mobile device on the wireless charging pad.
- Depending on the location of the mobile device's wireless charging coil, your mobile device may not charge properly.
- Fast wireless charging function only compatible with all supporting Qi-enabled fast wireless charging mobile devices.

5

6

FCC Statement

This device complies with Part 15 of the FCC rules. Operation is subject to the following two conditions: 1) this device may not cause harmful interference, and 2) this device must accept any interference received, including interference that may cause undesired operation.

Note: This equipment has been tested and found to comply with the limits for a Class B digital device, pursuant to part 15 of the FCC Rules. These limits are designed to provide reasonable protection against harmful interference in a residential installation. This equipment generates uses and can radiate radio frequency energy and, if not installed and used in accordance with the instructions, may cause harmful interference to radio communications. However, there is no guarantee that interference will not occur in particular installation. If this equipment does cause harmful interference to radio or television reception, which can be determined by turning the equipment off and on, the user is encouraged to try to correct the interference by one or more of the following measures:

- Reorient or relocate the receiving antenna.
- Increase the separation between the equipment and receiver.
- Connect the equipment into an outlet on a circuit different from that to which the receiver is connected.
- Consult the dealer or an experienced radio/TV technician for help.

Changes or modifications not expressly approved by the party responsible for compliance could void the user's authority to operate the equipment.

Radiation Exposure Statement

This device complies with FCC RF radiation exposure limits set forth for an uncontrolled environment. This transmitter must not be co-located or operating in conjunction with any other antenna or transmitter. During the operation of device a distance of 15 cm surrounding the device and 20 cm above the top surface of the device must be respected.