

H.265/H.264

HDMI Video Encoder

Live Broadcasting Guide

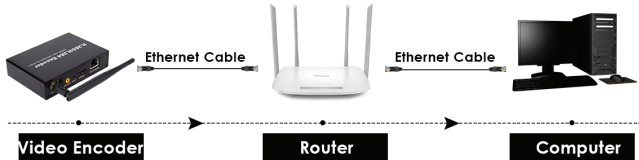
Default IP:192.168.1.120, user: admin, password: 12345

Index

1. Connection Diagram	1
2. Download & Install IPCManager.....	1
3. Configure IP Address of HDMI Video Encoder via IPCManager.....	1
4. Access Encoder from a Browser	3
5. Configure Parameters of Audio	4
6. Configure Parameters for Video	6
7. Configure RTMP Address (Take YouTube As Example)	7
8. Configure Wireless Connection (Only Available to Wireless Encoders)	7
9. Record and View Video(Only Available for Encoders with SD Card Slot).....	8
10. Technical Support	12
11. FAQ	12

1. Connection Diagram

- Power on encoder and connect it to router via ethernet cable.



2. Download & Install IPCManager

2.1 Download IPCManager from below links:

- IPCManager for Windows & MAC:

<https://docs.exvist.com/encoder/tools/ipcmanager/download>

2.2 Install IPCManager

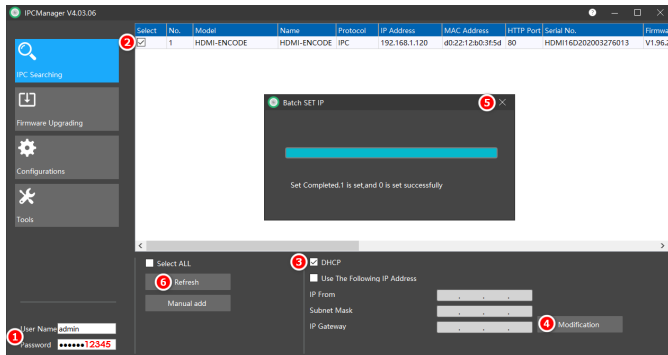
- Right click the application and run as administrator
- Select the corresponding language from the drop-down list (English, Polish, Russian, Japanese, German, Simplified Chinese, Traditional Chinese are available for Windows. Only English for MAC version.)
- Click Next-->Next-->Install

2.3 Download & Upgrade Firmware(If required)

- <https://docs.exvist.com/encoder/upgrade/download-firmware>
- <https://docs.exvist.com/encoder/upgrade/upgrade-firmware>
- ActiveX: <https://docs.exvist.com/encoder/tools/activex>

3. Configure IP Address of HDMI Video Encoder via IPCManager

- Run IPCManager (If you already installed it)
- Enter username & password (admin & 12345 by default)
- Select the encoder you would like to set
- Click checkbox of DHCP-->Modification-->Close-->Refresh



NOTE: please ensure the encoder and your PC are on the same network segment if it's connected to the same router. That's why it's recommended to use DHCP to obtain IP address to make it for sure.

4. Access Encoder from a Browser

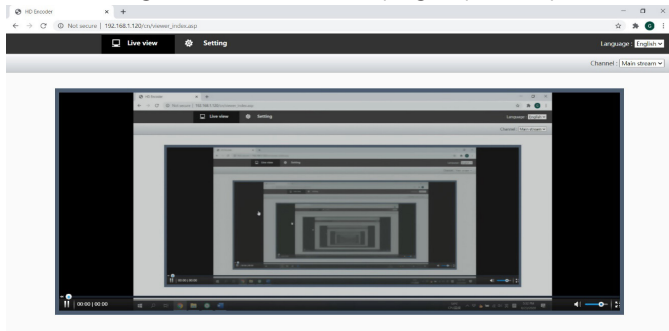
4.1 Start a browser like IE, Chrome, Firefox (Chrome Recommended).

4.2 Enter the IP address you configured above via IPCManager.

4.3 Enter username (admin) and password (12345 by default).



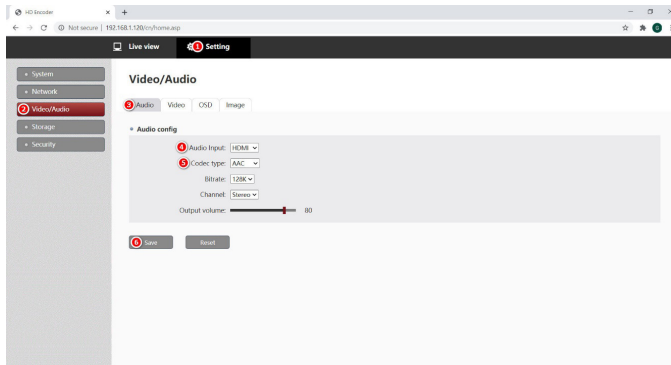
4.4 Click “Log In” and the Preview page opens in your browser



5. Configure Parameters of Audio

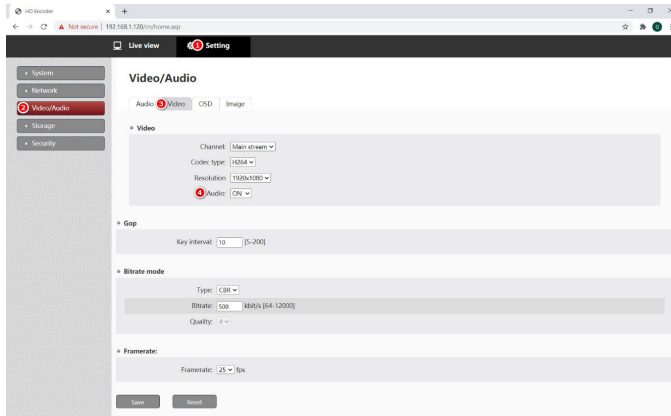
5.1 Set Basic Parameters

- Go to Setting-->Video/Audio-->Audio
- Audio Input set as HDMI or Line in (Line in applicable for audio input externally instead of by HDMI)
- Code type set as AAC and then click "Save"



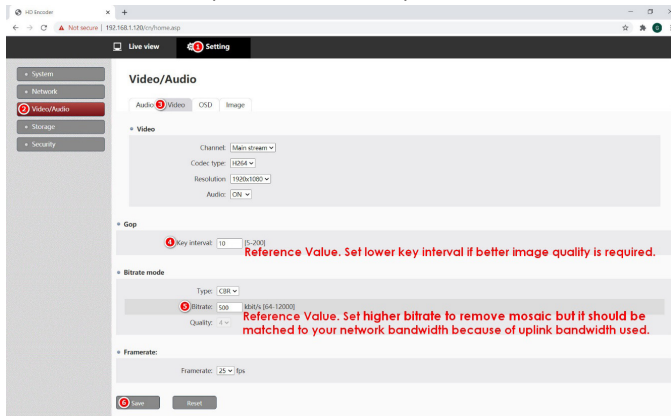
5.2 Turn On Audio

- Go to Setting-->Video/Audio-->Video-->Turn on Audio as below:



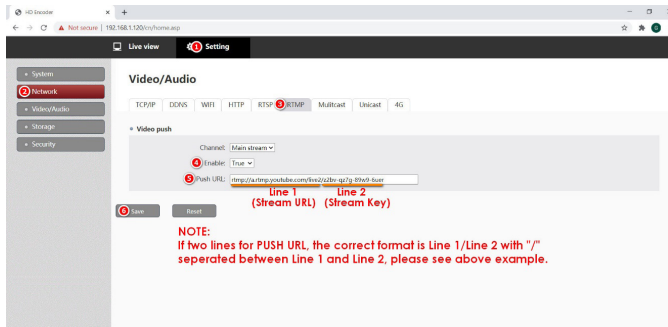
6. Configure Parameters for Video

- Go to Setting-->Video/Audio-->Video
- Key Interval set as 10(Reference Value)
- Bitrate set as 500(Reference Value)



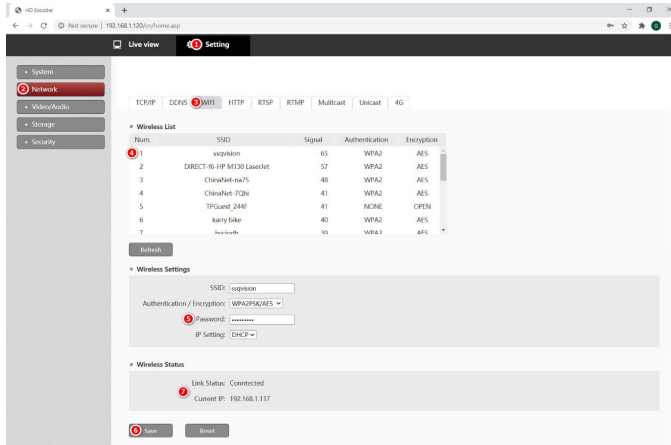
7. Configure RTMP Address (Take YouTube As Example)

- Go to Setting-->Network-->RTMP-->Enable(True)
- Enter Push URL: copy Stream URL and Stream Key from YouTube Studio into column of Push URL below



8. Configure Wireless Connection (Only Available to Wireless Encoders)

- Go to Setting-->Network-->WiFi-->Double Click Trusted SSID
- Enter correct password to SSID and Click "Save"
- Refresh and Link Status will be shown "Connected" below which means it's already connected to WiFi. If disconnected, please try it again or check whether MAC address of this encoder is in the whitelist of your router.



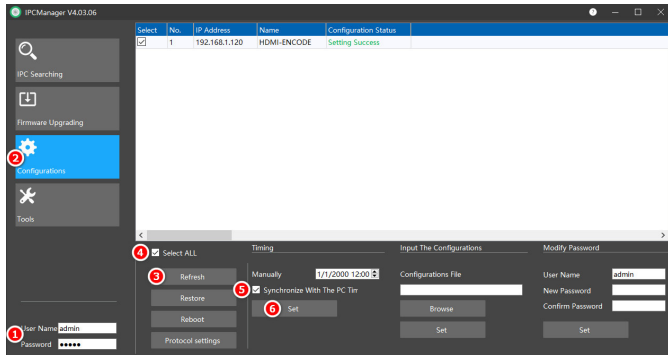
NOTE: It's necessary to plug out the ethernet cable and power off the encoder to reboot it to make WiFi valid.

9. Record and View Video(Only Available for Encoders with SD Card Slot)

9.1 Set Date & Time

- Run IPCManager(if you already installed it)
- Enter username() & password(admin & 12345 by default)

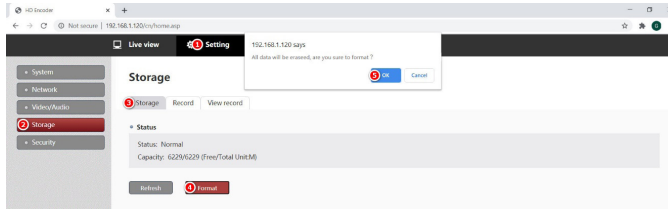
- Click tab “Configurations”-->Refresh-->Select All
- Select “Synchronize With The PC Time”-->Set



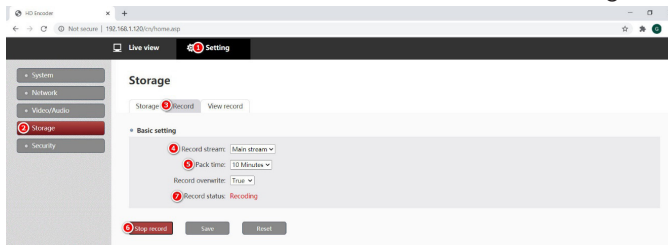
NOTE: It's necessary to set date and time no matter whether it's synchronized with the PC time or manually set, or else the below recording won't be valid and searched.

9.2 Record Video

- Go to Setting-->Storage-->Click “Storage”-->Insert SD card
- Refresh to check if SD card can be detected and format it



- Go to Record-->Select Main or Sub Stream-->Pack Time
- Click "Start Recording" and it's turn to "Stop Recording"
- Check "Record Status" whether it's shown "Recording"



NOTE: As well it'll be easier to press RES/REC button for 1 second to start recording or stop recording.

9.3 View Video

- Go to Setting-->Storage-->View Record
- Select Date & Time-->Search-->All recordings will be listed
- Click "Play" -->Video will be played after loading

NOTE: it's recommended to click videos with durations for 10/20/30 minutes to play, or else it won't be loaded successfully.

The screenshot displays the Hikvision iVMS-4200 web interface. On the left, a sidebar contains navigation links: System, Network, Video/Audio, Storage (highlighted with a red circle), and Security. The main content area is titled 'Storage' and has sub-tabs for 'Storage', 'Record', and 'View record' (the last one is active). Below the tabs, there is a search section with 'Date' set to '2020-08-23' and 'Time' set to '00:00:00' to '23:59:59'. A 'Search' button is present. Below the search, a table lists recording files. The first row is 'REC00004-20200823-202108-201108.mpeg4' with a duration of '10:00' and size of '227.11'. The second row is 'REC00004-20200823-202108-201108.mpeg4' with a duration of '01:00' and size of '25.7'. The second row is selected, and a red circle highlights the 'Play' button. A video player window is open, showing a preview of the selected recording. At the bottom right of the interface, there is a 'Delete' button and a 'Download' button with a download icon.

- Select video-->Click "Download" if you'd like to download it

10. Technical Support

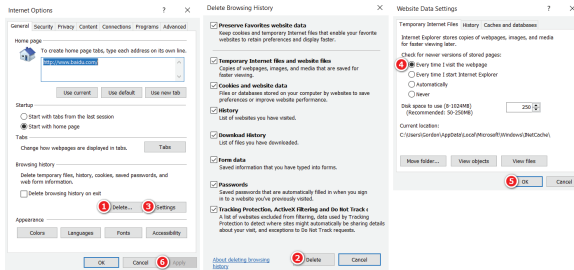
Any question, please contact us directly through below ways:

- Contact: Gordon
- Tell: +86-18923798767(WhatsApp)
- Skype: wylu007
- Email: wylu@exvist.com, info@exvist.com

11. FAQ

11.1 Why are settings set in IE (Internet Explorer) not saved?

A: It's necessary to clear cache after setting the parameters in IE, or else all settings will not be valid; If you wouldn't like to clear cache, it's recommended to use Google Chrome instead, it will be valid immediately after clicking Save button. How should we clear cache in IE? Please see 1.3 or below screenshot:



11.2 Why cannot we stream live video to YouTube via WiFi encoder?

A: First of all, please take it easy and follow below steps to use the WiFi encoder: a. connect it to your local network via ethernet cable; b. connect it to WiFi by clicking the corresponding SSID of WiFi, enter password and save it to connect to WiFi; c. plug out the ethernet cable and make sure that it's connected to WiFi only; d. power it off and reboot it;

NOTE: When streaming live video to YouTube or other media servers, it's only supported to do that either wired connection or wireless connection, or else it doesn't work if both connected. Besides, if you would like to switch the method of pushing video from wired to wireless, it's necessary to plug out the Ethernet cable and power off to reboot the encoder first, then it will be changed to wirelessly push stream.

11.3 Why cannot we still stream video to YouTube when all settings are correct especially under wireless connection?

A: Please check if DNS is set correctly.

- In America, it's recommended to use default DNS 8.8.8.8.
- In EU, it's recommended to use the DNS obtained from ISP(Internet Service Provider). Besides, the DNS of your local largest ISPs or other DNS like Google in EU.
- For other regions, it's recommended to use the DNS

obtained from ISP(Internet Service Provider). Besides, the DNS of your local largest ISPs or other DNS like Google at your local place.

NOTE: If possible, you can also try the settings with primary DNS as 192.168.x.1 and leave secondary DNS as blank.

11.4 Why does it show Video Loss in the page of preview?

A: It should have images when previewing as long as there is video signal input from HDMI. How should we tell whether it has video signal input from HDMI? It can be viewed from Configuration->System->System Status, if there is signal input from HDMI, Video input will be shown 1920*1080@60HZ and Audio input will be shown PCM 2CH 48000HZM; if no signal from HDMI, it will be blank for Video input and Audio input or just Video input will be shown 1920*1080@30HZ.

FCC Warning:

This equipment has been tested and found to comply with the limits for a Class B digital device, pursuant

to part 15 of the FCC Rules. These limits are designed to provide reasonable protection against harmful interference in a residential installation. This equipment generates, uses and can radiate radio frequency energy and, if not installed and used in accordance with the instructions, may cause harmful interference to radio communications. However, there is no guarantee that interference will not occur in a particular installation. If this equipment does cause harmful interference to radio or television reception, which can be determined by turning the equipment off and on, the user is encouraged to try to correct the interference by one or more of the following measures:

- Reorient or relocate the receiving antenna.
- Increase the separation between the equipment and receiver.
- Connect the equipment into an outlet on a circuit different from that to which the receiver is connected.
- Consult the dealer or an experienced radio/TV technician for help.

Caution: Any changes or modifications to this device not explicitly approved by manufacturer could void your authority to operate this equipment.

This device complies with part 15 of the FCC Rules. Operation is subject to the following two conditions:

(1) This device may not cause harmful interference, and (2) this device must accept any interference received, including interference that may cause undesired operation.

This equipment complies with FCC radiation exposure limits set forth for an uncontrolled environment. This equipment should be installed and operated with minimum distance 20cm between the radiator and your body.