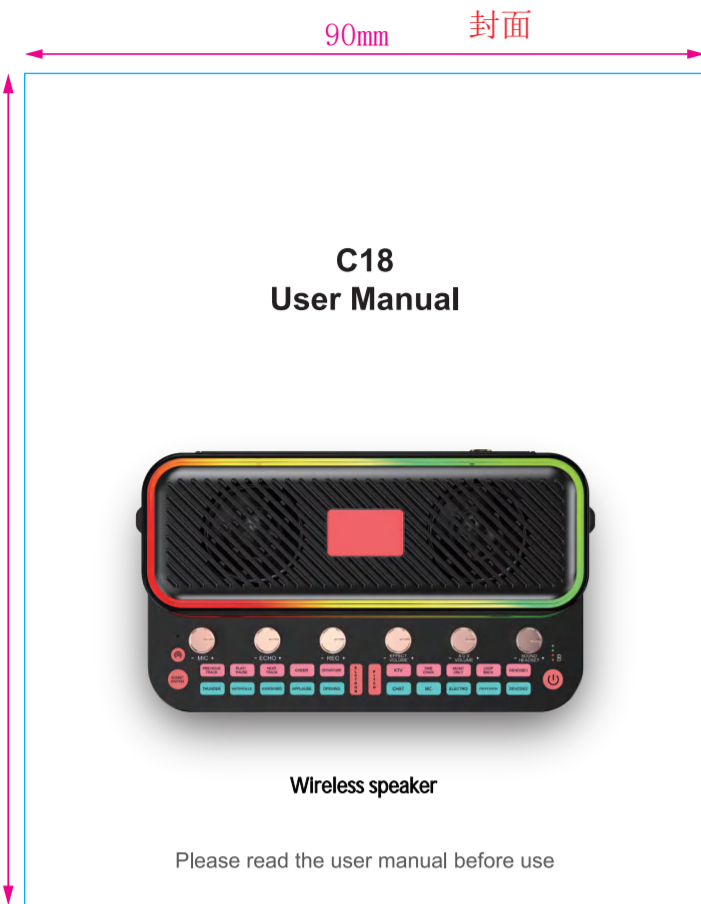


C18说明书

成品尺寸:90*110mm

材料:108克铜版纸+四色双面印刷+过光油

*骑马钉书籍式,制作装订成书本效果,封面、封底已标好,按顺序排列。



FCC Caution:
This device complies with part 15 of the FCC Rules. Operation is subject to the following two conditions:
(1) This device may not cause harmful interference, and
(2) this device must accept any interference received, including interference that may cause undesired operation.
Any changes or modifications not expressly approved by the party responsible for compliance could void the user's authority to operate the equipment.
NOTE: This equipment has been tested and found to comply with the limits for a Class B digital device, pursuant to Part 15 of the FCC Rules. These limits are designed to provide reasonable protection against harmful interference in a residential installation. This equipment generates, uses and can radiate radio frequency energy and, if not installed and used in accordance with the instructions, may cause harmful interference to radio communications. However, there is no guarantee that interference will not occur in a particular installation.
If this equipment does cause harmful interference to radio or television reception, which can be determined by turning the equipment off and on, the user is encouraged to try to correct the interference by one or more of the following measures:
-- Reorient or relocate the receiving antenna.
-- Increase the separation between the equipment and receiver.
-- Connect the equipment into an outlet on a circuit different from that to which the receiver is connected.
-- Consult the dealer or an experienced radio/TV technician for help.
The device has been evaluated to meet general RF exposure requirement. The device can be used in portable exposure condition without restriction.

CONTENTS

C18 USER MANUAL	01
Product Function Description	03
Sound Card Connection Guide	08

C18 USER MANUAL

C18 is a comprehensive audio equipment that integrates speaker, Karaoke machine and podcast console. It is compatible with smartphones, tablets and computers, including Android, iOS, Window and macos. It is plug-and-play with no extra driver required. The built-in DSP digital audio processor makes it possible to vary your voice and add more sound effect to your podcast with one single button, which will make your live-stream more entertaining.

Product Features

- 01.Compatible with smartphones, tablets and computers.
- 02.Intuitive and easy-to-use interface.
- 03.Multiple sound effects.
- 04.Real-time headphone monitoring, simultaneously listening and recording.
- 05.Support two microphone input at the same time on one kit.
- 06.Noise & ambient sound canceling, make your voice pure and clear.
- 07.Side chain function enables it to highlight human voice by automatically lowering the volume of background music.
- 08.Separate control of microphone volume and accompaniment volume.
- 09.Independent accompaniment input enables multiple audio input to live room.
- 10.TYPE-C interface for power and data.
- 11.Built-in lithium battery provides up to 4 hour's of usage, convenient for outdoor live broadcast.

Applicable Situation

Live broadcast on mobile phone/tablet/computer; Bluetooth Speaker.
Applicable app/software: TikTok/SNS Platform.

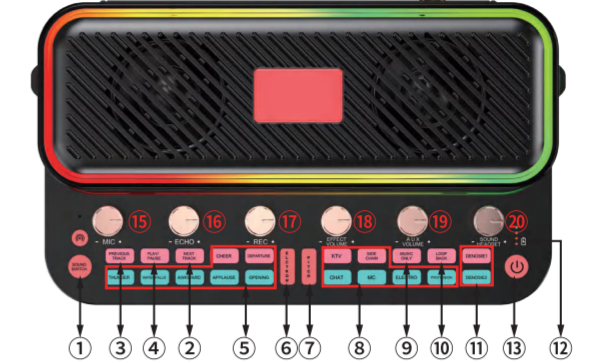
Accessory List

- Podcast Console*1
- Charging Cable*1
- User Manual*1
- Live Cable*1
- Braces*1
- Monitor Headphones*1
- 3.5mm Trrs Audio Cable*1

Specifications and Technical Parameters

Battery Type	18650	Model	C18
Charging Voltage Current	DC5V~1.5A		

Product Function Description



Buttons Description

- 1.Audio Switch**
Press and hold for 3 seconds to power on, and the sound will be released. When the monitor headphones are plugged in, the external audio will be automatically turned off, click to switch the lighting effects (including ten lighting effects).
- 2.Previous key**
- 3.Live/Pause**
- 4.Next key**
- 5.Default Sound Effect**

This area presets 7 default sound effect buttons, including: Gunshot/Contempt/Embarrassment/Applause/Introduce/Cheer/Exit.The User canpress the corresponding button to trigger the sound effect. Each sound effect button has an indicator light which will be always-on when not triggered,after pressing the sound effect button, the button light flashes until the sound effect ends. And it restores to be always-on.

6.Electronic Music Key Changer

There are 12keynotes: A, Bb,B,C,D4,D,Ab,G,Gb,F,Eb.Short press the"Electrical Tone"area to switch to the corresponding electronic tone and long press to close it.

7.Pitch Change key

" PITCH" button has 4 modes corresponding to different light colors, including male to female, female to male , girlish voice,robot. "EFFECT"and "PITCH" can not be triggered at the same time.

8.Sound Modes Area

There are five sound effects modes: singing, chatting, calling microphone, selling and professional. The anchor chooses different sound modes according to different business scenarios.

9.Side Chain Mode

When this mode is turned on during the live broadcast, the sound card will automatically reduce the volume of the background music to highlight the host's vocals. It is suitable for live chat scenarios.
The button light flashes when it is turned on! Steady on when off.

10.Music Only Mode

It can eliminate the vocal part in the sound source of the accompaniment song, and keep the music part, which is convenient for users to perform karaoke performance. Turn this function on and off, and the corresponding button lights will turn on and off!

11.Loop Back Mode

In this mode, when using the computer to play accompaniment music for the live broadcast, the host can control whether the computer sound is input to the live

broadcast room or not.
When it is turned on (the button light is flashing), the computer music is input into the live room. When it is turned off (the button light is always on), there is no sound input into the live room, and the music of the computer can be transmitted to the sound card and heard through the monitoring headphones, but it needs to open the internal music before uploading to the live room (please pay attention to open it directly).

12: Denoise Mode

Can automatically reduce the ambient sound from the microphone input. Press the button to turn this function on and off, correspondingly button lights on and off.
Noise reduction 1 is normal noise reduction, and noise reduction 2 is deep noise reduction.

13. Battery level display

4.LED lights are all on for 100%, 3 lights on for 75%, 2 lights on for 50%, 1 light on for 25%, battery indicator LED lights when charging Flashes in sequence, with red light on at the same time

14.Power switch key

Press and hold for 3 seconds to turn on and off the machine, the default Bluetooth mode is turned on, there is a TF card to switch between TF mode or Bluetooth mode, no TF card. Boot default Bluetooth mode.
Note: The original machine is not equipped with a TF card, if you use a TF card, you must purchase it yourself.

Knob Description

15. Microphone master volume, treble-midtone-bass

The default volume is the main volume when power on, and the microphone main volume button is controlled in the clockwise direction to increase the volume of the microphone input. Short press the switch key in order to treble-midtone-bass.

16.Mic reverb

Control the microphone button clockwise to increase the effect of the reverb.

17. Mic reverb delay

Clockwise control buttons to extend the reverb effect

18.Effect volume

he anchor has seven sound effects: gun sound, contempt, embarrassment, applause, debut, cheers, and departure. The volume control, the clockwise direction control button, the corresponding sound effect increases. Rotate counterclockwise to decrease the corresponding volume.

19. Accompaniment volume

Control the microphone button clockwise to adjust the volume of the external accompaniment music. When in use, control the microphone button clockwise to increase the volume of the accompaniment music or turn it counterclockwise to decrease the volume of the accompaniment music.

20. Headphones/Audio

Control the microphone button clockwise. You can increase the volume of the monitoring headphones and speakers. Users can adjust according to the actual situation.



Interface Description

1. TF Card

Can be inserted to store music TF card to play music (default TF card priority, you can press the power button to switch between Bluetooth mode and TF card mode).

2. Mobile Phone

Live interface, use four live audio cables to output the mixed sound of the sound card to the mobile phone, tablet through the live interface and other mobile live broadcast devices. Live and record.

3.Accompaniment

Accompaniment interface, use three audio cables to connect external audio sources (electric guitar, etc.) or playback devices to the sound card through the audio cables, which is convenient forThe background music accompaniment is played during the live broadcast.

4.Headphones/Headsets

Monitor headphone, microphone jack, volume is adjusted by headphone/sound button, Support American standard, international version headset.

5.Microphone interface

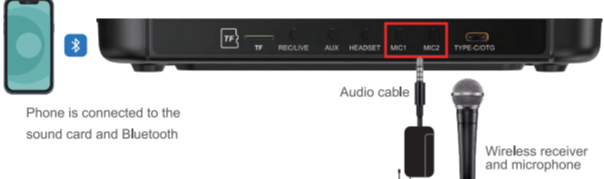
Can be connected to 3.5MM plug power-free condenser microphones, such as BeTm M8 and other models.

6.Charging/Mobile Phone/OTG

Live broadcast/charging port, charge the machine, and support live broadcast while charging. (It is recommended to use an OTG data cable straight broadcast charging).

Sound Card Connection Guide

1.Karaoke on Mobile Phone



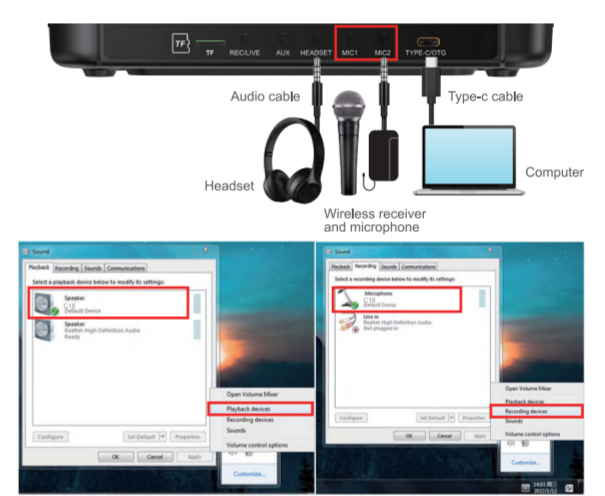
- 1.1 Make the mobile phone connect to the sound card Bluetooth;
- 1.2 Connect the wireless microphone receiver to the sound card, then turn on the microphone, it will work;
- 1.3 Download the karaoke app on smartphone;
- 1.4 Turn on the podcast console and select the sound effects needed;
- 1.5 Open the app on the smartphone and start to sing.
Note: Since some smartphones do not have 3.5mm jack, a USB-C/Lightning to 3.5mm adapter is required Please purchase the 3.5mm audio adapter from the phone manufacturer.

2.Live Streaming on Mobile Phone



- 2.1 Connect the monitor earphone to the podcast console, turn on the earphone/audio volume knob (put on the monitor headphones, and press any effect key to test the headphones and podcast console).
- 2.2 Connect the microphone to the podcast console, turn on the microphone, and turn on the microphone master volume knob (speak to the microphone, if the monitor earphone can hear the speech, indicating that the earphone, podcast console and microphone are workable)
- 2.3 Connect the phone to the podcast console
2.3.1 Android mobile phone with 3.5mm jack interface-use the audio cable to connect the mobile phone to podcast console.
2.3.2 Android phone with TYPE-C flat hole-use OTG cable to connect the mobile phone to podcast console.
2.3.3 iPhones-use OTG cable to connect iPhone to podcast console.
Tips: 1. Open the mobile phone recorder, make a test recording, unplug the mobile phone interface and replay the recording, if the recorder is workable, then you can start your podcast.
2. Android phones need to check whether the OTG function of the mobile phone is turned on!

3.Live Streaming on Computer



- 3.1 Connect the accompaniment music(smartphone, headsets, and microphone to the podcast console as the pictures shows.
- 3.2 Connect the computer and the podcast console by USB-C cable. The computer will automatically recognize the podcast console and select the driver.
- 3.3 Enter the sound control panel of Windows, and set the podcast console "C18" as the system default playback in "Playback" and "Recording" option.

4.KTV at Home



- 4.1 Turn on the device as shown above and connect the microphone.
- 4.2 Open the TV Bluetooth to search for the device name and click to connect. After the connection is successful, the Bluetooth light of the sound card is always on.
- 4.3 Select a song on the TV page and turn on the microphone to sing for entertainment.

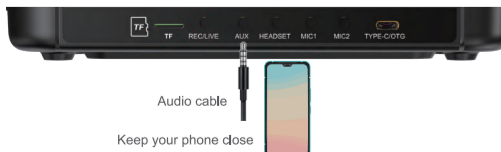
5.Accompaniment Connection Instructions

This device has a sound card function and a Bluetooth audio function. The external TF function can meet the needs of various accompaniment scenes.



Method 1: Wireless Bluetooth connection

- This device uses the Bluetooth connection function, which can be connected to a mobile phone as a live accompaniment sound source
- Turn on the device, the Bluetooth symbol on the front of the device starts to flash.
- Search for the device in the Bluetooth menu of the mobile phone, find the name of the connected Bluetooth jinjun. Click the name and connect, then play the accompaniment music. (The live mobile phone and the accompaniment mobile phone cannot be the same mobile phone)
- If the mobile phone connected to Bluetooth is used as the accompaniment device, please set up the player of the accompaniment sound source in advance.
- Turn on the mobile phone and the live broadcast software on the computer to broadcast live.
- Tips:** Bluetooth connection is limited by distance, please do not place your mobile phone at a long distance to affect the transmission of accompaniment music.



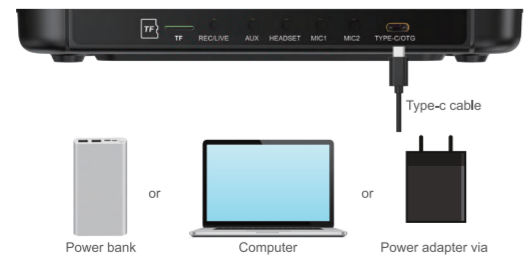
Method 2: Connect the accompaniment by cable, insert the 3-section audio cable into the accompaniment port, connect the headphone jack of another mobile phone or computer, the musical instrument jack, and then play the music.



Method 3: Use the TF that stores the music to play the corresponding TF socket of the device. The accompaniment music is played automatically.

Tip: When the device is working, you only need to choose one of the methods to accompany, and it is recommended to use wireless Bluetooth accompaniment.

6.Charging



- 6.1 It can be charged by connecting the podcast console to the computer /power bank and power adapter via USB-C cable.
- 6.2 The "battery indicator" on the podcast console will light up red when charging, and flash according to the battery level.
- 6.3 When the podcast console is connected to the computer, it can be charged while being used.
Note:
 - Please charge the podcast console before using for the first time.
 - If not used for a long period, please charge the podcast console every 3 months.
 - Charging is also possible when the power is off.
 - Do not charge for a long time.
 - Please stop charging when the battery is fully charged to avoid over charging.

7.Troubleshooting

7.1 Cannot boot

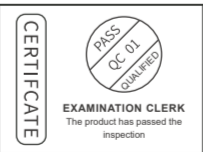
- 7.1.1 Please check if the podcast console has power, please charge it and then turn it on.
- 7.1.2 You need to long press the "O" for more than three seconds to turn it on
- 7.2 No sound from accompaniment music
7.2.1 Please check whether the external audio source is connected to the accompaniment interface of the podcast console.
- 7.2.2 Please check whether the accompaniment volume control knob on the right is turned on.
- 7.2.3 Please check the volume of the accompaniment device.
- 7.3 No sound from headphones
7.3.1 Please check whether the headphone cable is inserted into the correct interface.
- 7.3.2 Please check whether is the "headset or "sound" interface.
- 7.3.3 Please check whether is the "monitor fader" of the sound card upwards. You can gradually increase the volume by sliding it up.
- 7.4 No sound from the microphone
7.4.1 Please check whether the microphone is correctly connected to the microphone interface. If not,please try again.
- 7.4.2 Please check whether the microphone knob on the left is turned on. Turn the

- knob clockwise to increase the microphone volume slowly.
- 7.4.3 Please check whether is the "monitor fader" of thee sound card upwards. You can gradually increase the volume by pushing it up.
- 7.4.4 Please confirm with your microphone dealer whether your microphone can be used with this podcast console, or consult us for the recommended microphone model.
- 7.5 No sound in live broadcast
7.5.1 Please check whether the "recording"knob on the pod;cast console is turned on, and rotate the "recording knob clockwise to slowly increase the volume of the live broadcast.
- 7.5.2 Please check whether the podcast console has been set as the default playback and recording device of the live broadcast software, if not, please set refer to "Live Streaming on the Computer" part.

Notes:

- To avoid personal injury or property damage caused by high temperature, noise, radiation, fire, machinery and other factors,please use this product in a environmental, and read carefully and observe the following.
①If you encounter product heat, smoke, odor, etc, during use, please turn off the power and cut the power in time,and send it to the seller for maintenance
②Please do not modify, disassembler or repair this equipment by yourself to avoid invalidating the product warranty or causing personal injury. If necessary please contact the distributor to deal with it.
③This product should be used and stored in a dry, ventilated, and safe environment. Do not use this product in a humid dusty environment
④Please avoid rain and dust entering the product to avoid short circuit. Close to the fire, collision and severe vibration will cause immersive damage to the product damage.
⑤Please do not use this product in the occasions prohibited by law, and follow the relevant safety regulations to use this product to avoid any accidents.
⑥This product cannot be used as a children's toy,please place it out of the reach of children.

Attention:The product is equipped with a rechargeable lithium battery.Please do not disassemble or replace it by yourself.Use the correct method to charge the device. Do not place the device near a fire source or expose it to direct sunlight,otherwise the battery heating will damage the safety device and cause the battery to explode or burn.



FCC ID: 2A5TA-C18

UK CROSSBORDER LIMITED
7 Bell Yard London WC2A 2JR, UK
United Kingdom

EU REP Skylimit Service GmbH
Rödingmarkt 20
20459 Hamburg



Made in China