

Wireless Push Button (Item No. LM173)

User Manual

Thank you for purchasing the wireless push button remote control (LM173). It can be mounted not only on wall in the room but also in the car or any other place for user convenience. Read the manual carefully and completely before you permanently mounting the push button.

Installation

There are 2 parts of the push button, one is remote key and another is the holder. You should take the remote key out before the installation. You can detach the holder from the push button according to Fig.1.

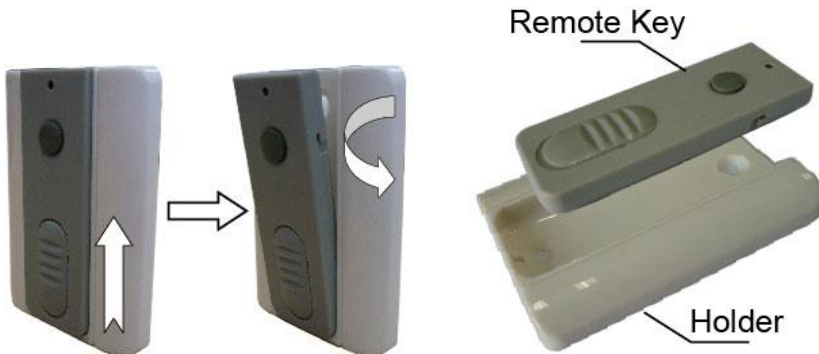


Fig. 1

There are 2 methods to install the push button according to you needs. One is permanently mounting to the wall (Fig.2) and another is installing to the post for portable using (Fig.3).

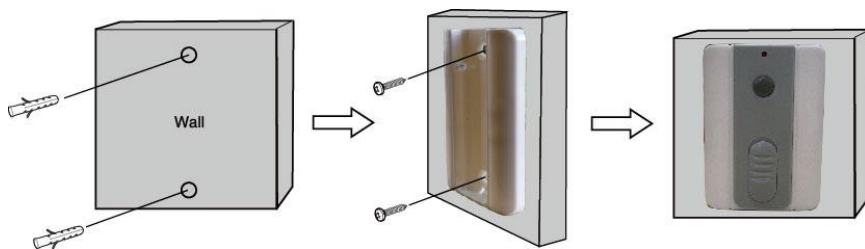


Fig. 2

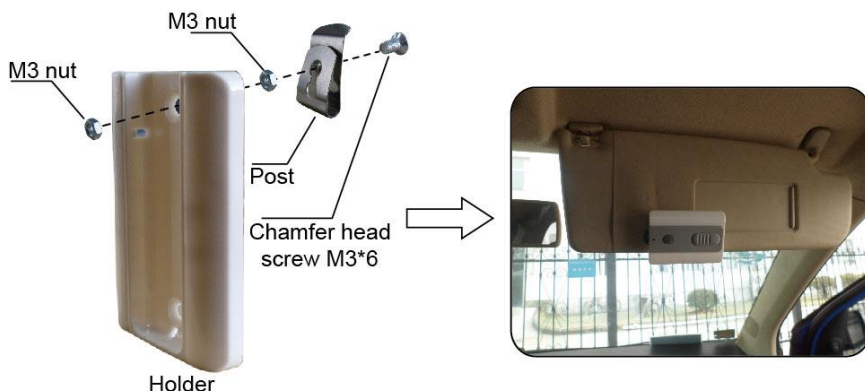


Fig. 3

Program the push button to the control board

Press and release the learn button on the control board, the **LED** will display “Ln” for **LM902/LM901** (REM LED light will be on for **DSR/C 600/1000, SFG/SCG 17/18/20/21/50**), then press the remote key of the push button twice in 2 seconds, the **LED** will flash “Ln” for 4 seconds then back to “- -” for **LM902/LM901** (REM LED light will flash for 4 seconds and then off for **DSR/C 600/1000, SFG/SCG 17/18/20/21/50**). Now the push button has been programmed successfully.

FCC Statement

This equipment has been tested and found to comply with the limits for a Class B digital device, pursuant to Part 15 of the FCC Rules. These limits are designed to

provide reasonable protection against harmful interference in a residential installation. This equipment generates uses and can radiate radio frequency energy and, if not installed and used in accordance with the instructions, may cause harmful interference to radio communications. However, there is no guarantee that interference will not occur in a particular installation. If this equipment does cause harmful interference to radio or television reception, which can be determined by turning the equipment off and on, the user is encouraged to try to correct the interference by one or more of the following measures:

- Reorient or relocate the receiving antenna.
- Increase the separation between the equipment and receiver.
- Connect the equipment into an outlet on a circuit different from that to which the receiver is connected.
- Consult the dealer or an experienced radio/TV technician for help.

This device complies with part 15 of the FCC Rules. Operation is subject to the following two conditions: (1) This device may not cause harmful interference, and (2) this device must accept any interference received, including interference that may cause undesired operation.

Changes or modifications not expressly approved by the party responsible for compliance could void the user's authority to operate the equipment.

©2012-2014 LockMaster All Rights Reserved