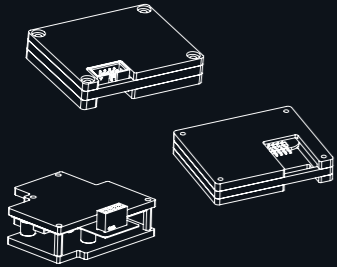


Genmitsu

Wireless Control Module User Guide

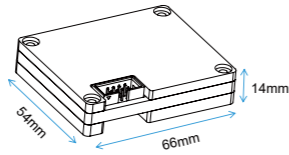
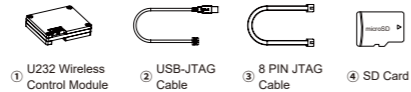


V1.0 Apr. 2024

Unboxing

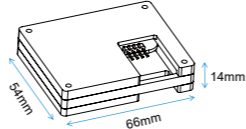
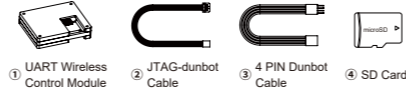
(Upon opening the box, please check the contents of the box against the list below. This user manual covers different models of Wi-Fi Modules so make sure to check the right list and follow the corresponding instructions.)

GGW-U232

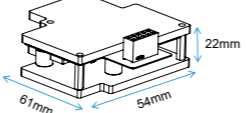
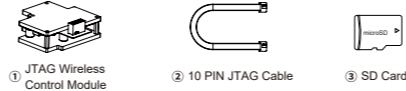


01

GGW-UART



GGW-JTAG



02

Install the Wi-Fi Module

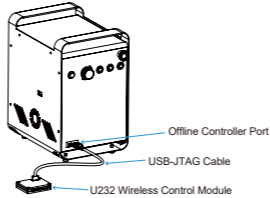
Prerequisites: Insert the SD card into Wi-Fi boards.



Situation 1: Connect Externally

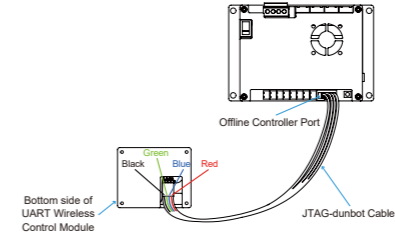
Compatible Models:
PRO Series: 3018-PRO, 3020-PRO MAX
PROVer Series: 3018-Prover
PROVerXL Series: PROVerXL 4030, PROVerXL 4030 V2, PROVerXL 6050 Plus

A. See below for how to connect the PROVer XL 6050, but the same process applies for the 4030 and 4030 V2 as well.



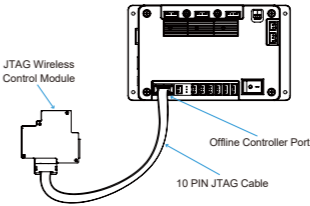
03

B. See below for how to wire the 3020 Pro Max V1, and also works on the 3018 Pro.



04

C. How to connect to a 3018 PROVer V1.



Genmitsu



If you need any assistance, please contact us via:

Email: support@sainSMART.com

Facebook messenger: <https://m.me/SainSMART>

Help and support is also available from our Facebook Group



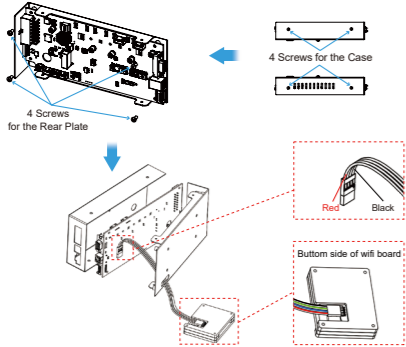
Vastrmind LLC, 2330 Paseo Del Prado, C303, Las Vegas, NV 89102

Situation 2: Connect from Back

PRO Series: 3020-PRO MAX V2, 4040-RENO, 4040-PRO
PROVer Series: 3018 PROVer V2, 3030 PROVer Max
(Please note that 4040-PRO requires a new mainboard that supports Wi-Fi serial ports. Check details on our product page.)

1. Remove the case and rear plane screws and locate the 4-pin connector on the rear of the mainboard.
2. Insert the cable through the open case channel and plug it into the connector as shown.
3. Install the case back on.

Note: See below for how to connect the 4040 RENO.



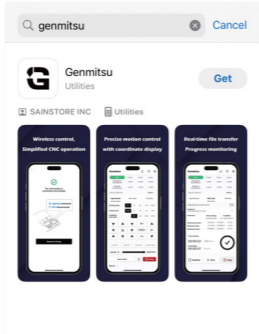
05

Genmitsu APP Setup

STEP 1. APP Download

Find in the Google app store or Apple app store by searching for Genmitsu. Download and setup.

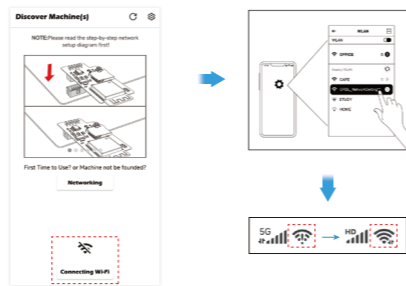
Note: Support 2.4G Wi-Fi only.



06

STEP 2. Wi-Fi Setting (Only the first time the module is linked or Wi-Fi needs to be reconfigured after replacement)

1. Open the app and click the **Connecting Wi-Fi** icon on the home interface.
2. Select the Wi-Fi named **Gmt_Grbl_XXX** and connect, wait for the exclamation point in the icon to disappear. (Ignore the no connection message.)



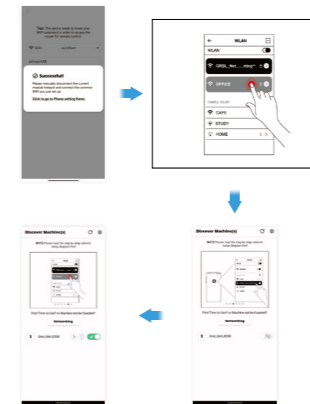
07

3. Go back to APP, click **Networking** to the network configuration.
4. When the wireless module is lights up blue, click **Continue** to enter Wi-Fi network configuration.
5. Select the Wi-Fi network you need, enter the password, and then click **Network Setting**. Wait about 30 seconds.



08

6. After the machine is successfully configured, switch back to the Wi-Fi network you just selected.
7. Go back to the APP, you will now find modules that have been configured for the network and are waiting to be connected.
8. Click **Connect**. When it turns green, the module is connected successfully. Then click **>** to enter the control interface.



09

FCC compliance statement

This device complies with part 15 of the FCC Rules. Operation is subject to the following two conditions: (1) this device may not cause harmful interference, and (2) this device must accept any interference received, including interference that may cause undesired operation.

NOTE: This equipment has been tested and found to comply with the limits for a Class B digital device, pursuant to part 15 of the FCC Rules. These limits are designed to provide reasonable protection against harmful interference in a residential installation. This equipment generates, uses and can radiate radio frequency energy and, if not installed and used in accordance with the instructions, may cause harmful interference to radio communications. However, there is no guarantee that interference will not occur in a particular installation. If this equipment does cause harmful interference to radio or television reception, which can be determined by turning the equipment off and on, the user is encouraged to try to correct the interference by one or more of the following measures:

- Reorient or relocate the receiving antenna.
- Increase the separation between the equipment and receiver.
- Connect the equipment into an outlet on a circuit different from that to which the receiver is connected.
- Consult the dealer or an experienced radio/TV technician for help.

To maintain compliance with FCC's RF Exposure guidelines, this equipment should be installed and operated with minimum distance between 20cm the radiator your body: Use only the supplied antenna.

10