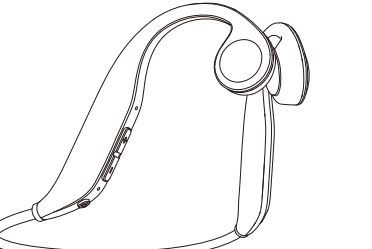


背面英文



User's manual

YK666 bone conduction sports earphone

Terms of Service

Dear Customer:
Hello!

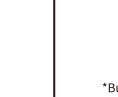
Thank you for purchasing and using this product, in order to protect your rights, we provide the product for one year from the date of purchase

When purchasing the product, please confirm that the function is normal, the appearance is good, and the accessories are complete, and fill in the relevant information on the warranty card as required content, and properly keep the "product quality warranty card" as your proof of repair. our company provides you with comprehensive services in accordance with the "regulations on commodity warranty, replacement, and return responsibilities" issued by relevant national departments, after-sales three-guarantee service, please bring the warranty card or shopping voucher to the designated outlet for repair.

MODEL YK666

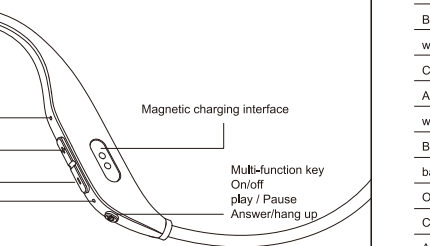
CHECKER

DATE



Functional Overview

Inner right ear



*Built-in battery, user can not remove.

Product specifications

Bluetooth version:Qualcomm BT 5.0

Bluetooth distance:10M

Bluetooth pairing name:YK666

waterproof level:IP54

Call time:6~8H

Apple battery display:stand by

working frequency:300~3KHz

Body weight:About 21g

battery capacity:Lithium polymer 150mAh

Operating temperature:Normal -5~40 C

Charging time:1~2H

Apple volume sync:stand by

stand-by current:Less than 0.5mA

audio format:Comes with noise reduction, supports CVC, SBC, AAC, APTX,etc.

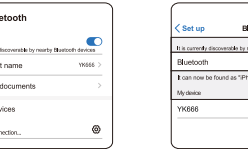
Instructions for use

Connection: automatically enter the pairing mode after power on, the phone turns on the Bluetooth, search for the pairing name **"YK666"** to connect, the prompt sound,the **"Connected"** blue light flashes twice in 5 seconds;

Disconnect: When the device is disconnected from Bluetooth, the prompt tone **"Disconnected"** flashes red and blue alternately;

Automatically connect back: After the headset is successfully turned on, the headset will automatically connect to the phone successfully, and the red and blue lights of **"Connected"** will flash together for 1 second;In shutdown mode, press and hold the function button for 3 seconds to turn on the device, and the red and blue lights alternately flash; if it fails to pair within 5 minutes, it will automatically turn off; In shutdown mode, the device will automatically search for the connection when it is turned on. If it does not, the Bluetooth will enter the pairing mode and the red and blue lights will flash alternately .

Android version



IOS system



Note: If you change other devices, just follow the steps above to re-pair.

Multiple use key

Function item Operation method Beep

On/Start Long press the multi-function button for about 3 seconds, the red and blue lights flash alternately "Power on"

Off/End Long press the multi-function button for about 3 seconds, the red and blue lights will stay on for 1 second "Power off"

Volume +/- Short press the volume + key to go to the previous song, and the volume+key to go to the next song

play / Pause Short press the multi-function key

Answer hang up Short press the multi-function button to answer/hang up the call "Tone"

Reject the call Long press the multi-function button for 2 seconds to reject the call "Tone"

Summon voice assistant When standby or listening to music, double-click the function button to Activate/deactivate voice assistant

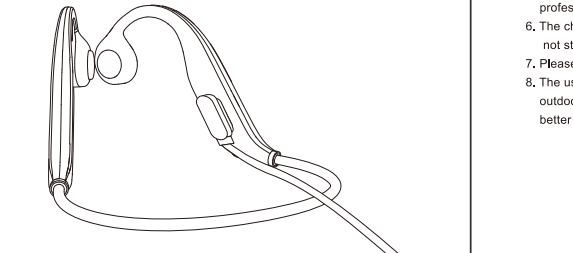
Low battery reminder A beep every 90 seconds, red light instead of blue light "Battery low"

Charging operation

When the battery is low, the beep **"Battery low"** will be heard every 90 seconds, and the red light will replace the blue light, Please use the DC 5V charging adapter to line charging

Charging: the red LED light is always on

Fully charged: the blue LED light is always on



Note: Please use the charging cable equipped with the manufacturer's trademark for charging. If you use the cable, please use it under the guidance of customer service to avoid damage.

Precautions

- Do not excessively press, pull, twist or bend the plastic body;
- Do not bake at a high temperature above 60 degrees to avoid battery damage;
- Do not soak in water;
- Do not use sharp or sharp knives to pierce or cut the body to avoid damage to the circuit;
- Please don't disassemble it privately. In case of maintenance, please consult a professional first;
- The charging cable needs to use the standard configuration. If the charging cable is not standard, it may cause a short circuit due to the opposite polarity;
- Please use a 5V adapter to charge, charging over 5V will damage the headset;
- The user can choose the appropriate volume according to the use scene such as outdoor or indoor to achieve the best to take into account outside sounds or better privacy.



Warranty Card

For your rights,please fill in carefully and keep it properly as a proof before repair:

	Product model	
	Contact number	
Random accessories are not covered by the warranty		

HEE UVCVGOGPV<

This device complies with Part 15 of the FCC Rules. Operation is subject to the following two conditions:
(1) This device may not cause harmful interference, and
(2) This device must accept any interference received, including interference that may cause undesired operation.

Yctpkpi< Changes or modifications not expressly approved by the party responsible for compliance could void the user's authority to operate the equipment.

NOTE: This equipment has been tested and found to comply with the limits for a Class B digital device, pursuant to Part 15 of the FCC Rules. These limits are designed to provide reasonable protection against harmful interference in a residential installation. This equipment generates uses and can radiate radio frequency energy and, if not installed and used in accordance with the instructions, may cause harmful interference to radio communications. However, there is no guarantee that interference will not occur in a particular installation. If this equipment does cause harmful interference to radio or television reception, which can be determined by turning the equipment off and on, the user is encouraged to try to correct the interference by one or more of the following measures:

Reorient or relocate the receiving antenna.
Increase the separation between the equipment and receiver.
Connect the equipment into an outlet on a circuit different from that to which the receiver is connected.
Consult the dealer or an experienced radio/TV technician for help.

TH yctpkpi uvcvgogpv<
The device has been evaluated to meet general RF exposure requirement. The device can be used in portable exposure condition without restriction.