

261x95mm


RGB SMART LED STRIP LIGHT KIT

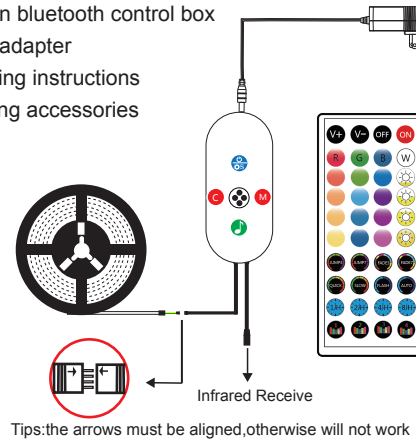


Download App

Product overview

Package contents

- LED strip
 - 40-key infrared remote controller (with CR2025 battery)
 - 4-button bluetooth control box
 - Power adapter
 - Operating instructions
 - Mounting accessories
- 
- The diagram illustrates the electrical connections for the LED strip. A power adapter is connected to the LED strip's power input. A 4-button bluetooth control box is connected to the LED strip's data input. The LED strip is shown as a long, thin, flexible strip with a series of small LEDs.







Tips:the arrows must be aligned,otherwise will not work

I

4-button bluetooth control box



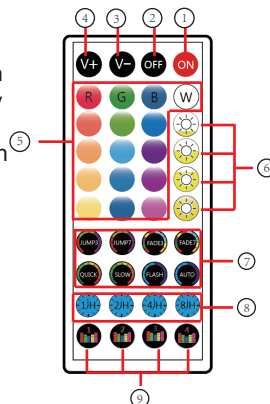
- (1)  Click power on
Long press 5s to turn off
Speed/brightness
Click adjusting button
When it is static mode, it can adjust the brightness.
When it is Jump mode, it can adjust the speed.
- (2)  Mode button: Click to change jump mode
- (3)  Static color button: Click to change color
- (4)  Music button: Click to change music mode

40-key infrared remote controller

The controllable distance within 8m,can adjust brightness, change static colors or other effects.

2

1. Turn on
2. Turn off
3. When it is music mode, you can reduce the acoustical sensitivity by pressing "V-".
4. When it is music mode, you can increase the acoustical sensitivity by pressing "V+".
5. 16 static colors
6. Brightness percentage adjustment
7. JUMP3: 3 colors jump change
JUMP7: 7 colors jump change
FADE3: 3 colors gradient
FADE7: 7 colors gradient
QUICK: Under the modes: JUMP3, JUMP7, FADE3, FADE7, FLASH and AUTO, can be selected.
SLOW: Under the modes: JUMP3, JUMP7, FADE3, FADE7, FLASH and AUTO, can be selected.
AUTO: JUMP3, JUMP7, FADE3, FADE7, FLASH and AUTO, automatically cycle.
8. FLASH: Turn on 7 colors strobe light
9. Timing mode
9. Music mode



3

Common Troubleshooting

The controller was connected the power, but not light up

1. Check the input power supply: please use the power adapter that we equipped or the same specification adapter as ours . The input voltage must meet the voltage required by the lamp. When the input voltage is too low, the lamp will not be light, and the high voltage may damage the circuit. The output power of the adapter (KW value) must be equal to or greater than the power of the LED lamp belt.
2. Check whether the controller and the lamp are connected correctly, Make sure each interface is connected correctly.
3. Check whether the remote control is open.

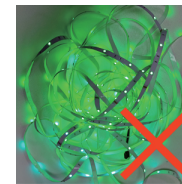
LED light up, but the remote control does not work or can't control LED light belts

1. Check whether the insulation sheet is removed from the remote control.
2. Make sure the battery on the remote control is installed correctly.
3. Ensure that it is being used within 8 meters and aligned to the infrared receiver of the controller.
4. Try to replace the battery

Attentions:

Lamp belt must be used under 12V
Remote control must be aligned to the Infrared Receiver of the controllers
The lamp belt must be connected correctly as showed method

4



When conducting a light test, if the strip is scattered into a mess, it is easy to cause the cuttable areas of the strip to come into contact with each other, which can lead to damage to individual lamp beads. The test can be carried out without dismantling the strip reel or by laying the strip flat on the ground, so that no individual beads are damaged after installation.

Tips: Please clean up the surface before installation, as dust on the surface will seriously affect the adhesive effect of the strip.



WARNING

DO NOT IMMERSE IN WATER DO NOT IMMERSE IN FIRE
CHILDREN UNDER THE AGE OF 16 SHOULD USE THIS
PRODUCT UNDER ADULT SUPERVISION.

If you have any question after receiving the products, please contact our customer service,we will reply to you within 24 hours.

FC UK C E RoHS  

5

FCC Warning Statement

Changes or modifications not expressly approved by the party responsible for compliance could void the user's authority to operate the equipment. This equipment has been tested and found to comply with the limits for a Class B digital device, pursuant to Part 15 of the FCC Rules. These limits are designed to provide reasonable protection against harmful interference in a residential installation. This equipment generates uses and can radiate radio frequency energy and, if not installed and used in accordance with the instructions, may cause harmful interference to radio communications. However, there is no guarantee that interference will not occur in a particular installation. If this equipment does cause harmful interference to radio or television reception, which can be determined by turning the equipment off and on, the user is encouraged to try to correct the interference by one or more of the following measures:

- - Reorient or relocate the receiving antenna.
- - Increase the separation between the equipment and receiver.
- - Connect the equipment into an outlet on a circuit different from that to which the receiver is connected.
- - Consult the dealer or an experienced radio/TV technician for help.

This device complies with part 15 of the FCC Rules. Operation is subject to the following two conditions: (1) This device may not cause harmful interference, and (2) this device must accept any interference received, including interference that may cause undesired operation.

RF Exposure Statement

To maintain compliance with FCC's RF Exposure guidelines, This equipment should be installed and operated with minimum distance of 20cm the radiator your body. This device and its antenna(s) must not be co-located or operation in conjunction with any other antenna or transmitter.