

POP-UP RELOCATABLE POWER TAPS



Specification:

Rated power: 15A 110-125V AC Max 1,875W 50/60Hz

USB Output: 5V 4.2A Wireless Charger: 5V 5W

Caution:

KEEP CHILDREN AWAY. TO REDUCE THE RISK OF ELECTRIC SHOCK, USE INDOORS ONLY. RISK OF ELECTRIC SHOCK, DO NOT PLUG INTO ANOTHER RELOCATABLE POWER TAP OR AN EXTENSION CORD. USE IN DRY LOCATION ONLY.

How to Use :

- (1) Press on the top of the product by hand, the socket will rise upward.
- (2) When the device is connected to AC outlet, press the red switch
- (3) USB ports can be used to charge mobile phone, tablet, camera etc.
- (4) Turn the red switch to "0", all AC outlets will be disconnected from the power supply.

Installation Instruction:

- (1) Required installation space is not less than 50cm as shown in fig 5.
- (2) Use an electric drill with the drill diameter of 100-105mm. (fig 1).
- (3) Drill a through hole on the desk where you use this power socket. (fig 2).
- (4) Slide the device through the drilling hole (Fig 3).
- (5) Put on the nut and fasten the power socket to the table (Fig 4).
- (6) Ready for use. (fig 5). Press on the top to raise or pack up the device.

Figure 1 Figure 2

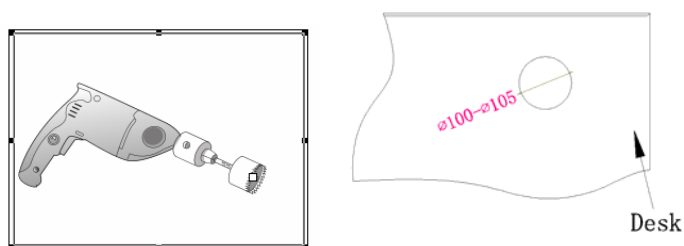
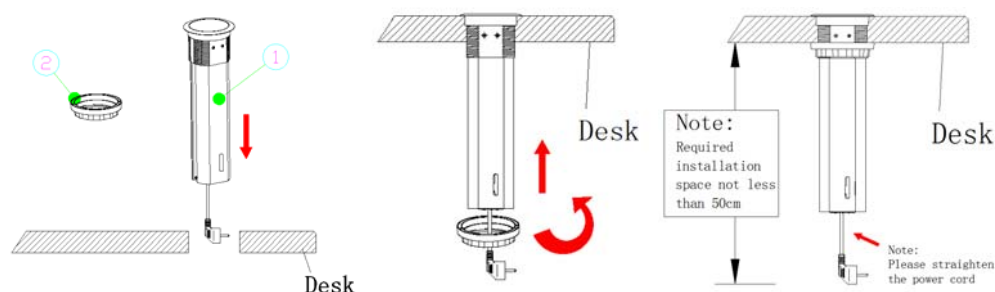


Figure 3 Figure 4 Figure 5



FCC Statement:

This equipment has been tested and found to comply with the limits for a Class B digital device, pursuant to Part 15 of the FCC Rules. These limits are designed to provide reasonable protection against harmful interference in a residential installation. This equipment generates uses and can radiate radio frequency energy and, if not installed and used in accordance with the instructions, may cause harmful interference to radio communications. However, there is no guarantee that interference will not occur in a particular installation. If this equipment does cause harmful interference to radio or television reception, which can be determined by turning the equipment off and on, the user is encouraged to try to correct the interference by one or more of the following measures:

- Reorient or relocate the receiving antenna.
- Increase the separation between the equipment and receiver.
- Connect the equipment into an outlet on a circuit different from that to which the receiver is connected.
- Consult the dealer or an experienced radio/TV technician for help.

Changes or modifications not expressly approved by the party responsible for compliance could void the user's authority to operate the equipment.

This device complies with part 15 of the FCC Rules. Operation is subject to the following two conditions:

- (1) This device may not cause harmful interference, and (2) this device must accept any interference received, including interference that may cause undesired operation.

Radiation Exposure Statement

This device complies with FCC RF radiation exposure limits set forth for an uncontrolled environment. This transmitter must not be co-located or operating in conjunction with any other antenna or transmitter. During the operation of device a distance of 15 cm surrounding the device and 20 cm above the top surface of the device must be respected.