

# LED BLUETOOTH CONTROLLER MANUAL

## Specification

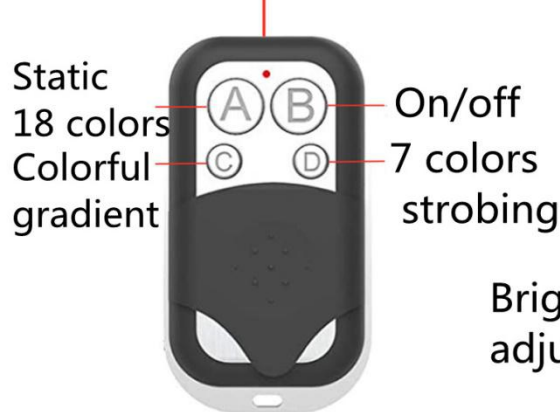
Products Name	Bluetooth Controller
OS	Android 4.4 or above/IOS 10.0 or above
SIGNAL	Bluetooth 4.0+433
Controls	Bluetooth/Box Controller/24 keys Controller/4 keys controller
Input voltage	DC:12V
application	commercial use permitted

# Controller Function

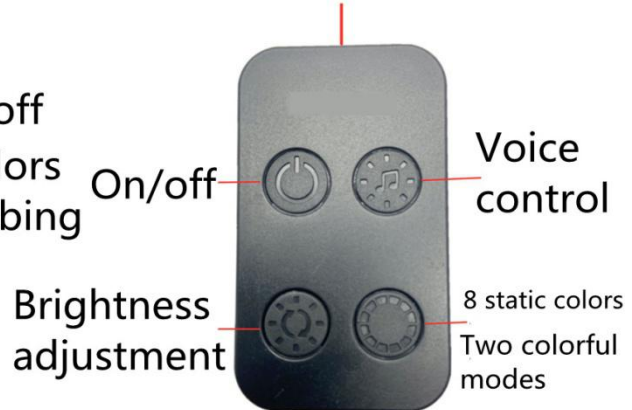
24 keys controller



4keys controller



Box controller



## **Instruction for connection of Smart Bluetooth controlle**

### **App installation**

1: install APP: APP name: LED Random color



Download APP

### **How to download:**

1.Scan QR code to install by phone: If you install the APP in APP Store or Google Play,an user account is needed.

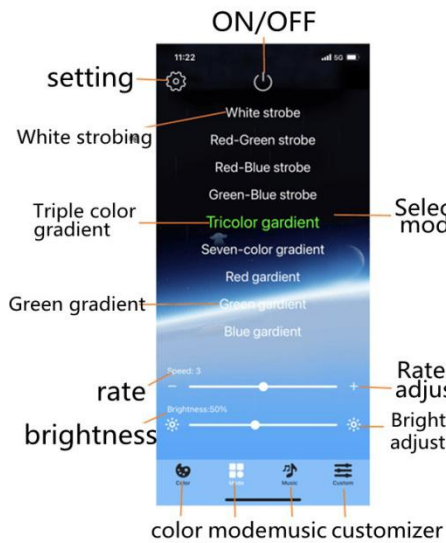
2.after the app installed then go to connect your phone with the bluetooth lamp Firstly open your phone bluetooth, then power on your lamp. Secondly open the app, the app will connect the bluetooth lamp automatically.Please don't search the bluetooth on your phone setting by yourself, cause some phone OS don't support manual search except some specific OS type and it doesn't mean that you can't use it by APP.

### 3.If you can' t connect it by APP

- (1)Please check if the lamp is normally powered on.
  - (2)Please check if the bluetooth function is turned on on your phone
  - (3)Please check if there is another phone connected with the lamp already, if in that situation please disconnect it first. Because bluetooth 4.0 can only support one to many connection, don' t support many to many connection.
  - (4)Please check if you connect it on phone setting by yourself, if it is the situation, please disconnect it and close the APP, then open APP to connect it automatically.
  - (5)Close the APP, restart your phone, repower your lamp and reopen your APP for a reconnecting.
- 



## 2、 Mode control panel



(1) mode selection

(2) Slide up/down to select mode, there is 25 modes for selection.

(3) Touch the ordinal number of mode, the mode will be selected after the white outline displayed.

(4) Speed setting

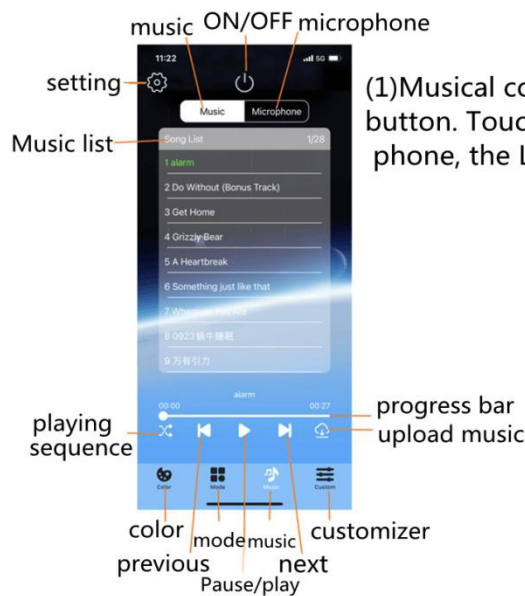
(5) Move the slider on the speed bar to left/right to adjust the color changing rate.

(6) Move the slider to right to speed up, to left to speed down.

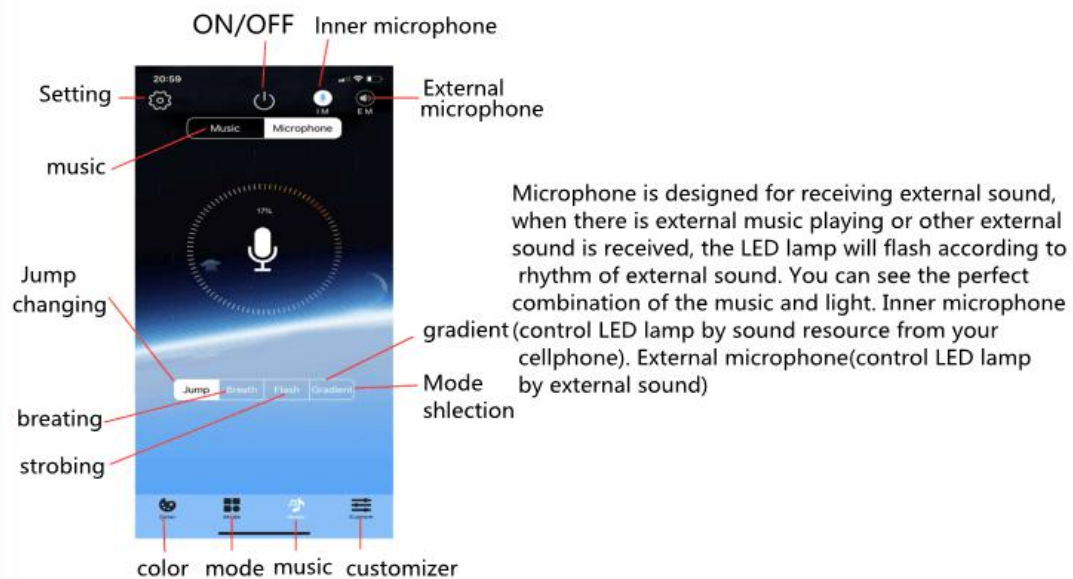
(7) Brightness adjustment

(8) Move the slider to right to make the lamp brighter, to left to make the lamp dimmer.

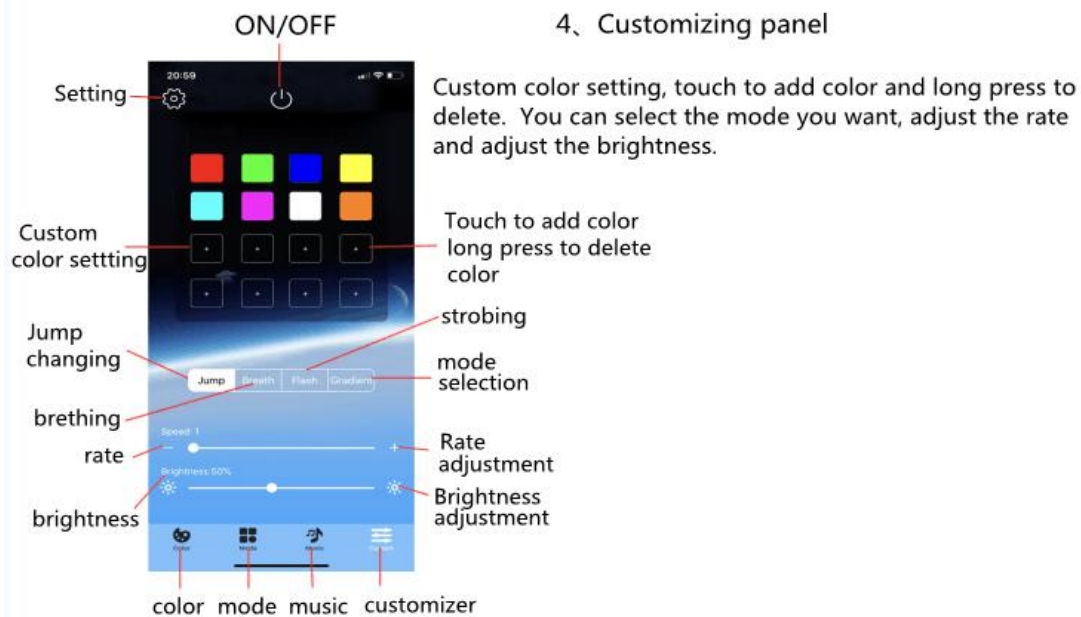
## 3、 Musical control panel



(1) Musical control panel includes music and microphone button. Touch music button to select music files on your phone, the LED lamp will flash with the playing music.



#### 4、Customizing panel



## Connection mode:A



## Connection mode:B



## **FCC Statement**

This equipment has been tested and found to comply with the limits for a Class B digital device, pursuant to part 15 of the FCC Rules. These limits are designed to provide reasonable protection against harmful interference in a residential installation. This equipment generates, uses and can radiate radio frequency energy and, if not installed and used in accordance with the instructions, may cause harmful interference to radio communications. However, there is no guarantee that interference will not occur in a particular installation. If this equipment does cause harmful interference to radio or television reception, which can be determined by turning the equipment off and on, the user is encouraged to try to correct the interference by one or more of the following measures:

- Reorient or relocate the receiving antenna.
- Increase the separation between the equipment and receiver.
- Connect the equipment into an outlet on a circuit different from that to which the receiver is connected.
- Consult the dealer or an experienced radio/TV technician for help.

Caution: Any changes or modifications to this device not explicitly approved by manufacturer could void your authority to operate this equipment.

This device complies with part 15 of the FCC Rules. Operation is subject to the following two conditions: (1) This device may not cause harmful interference, and (2) this device must accept any interference received, including interference that may cause undesired operation.

### **RF Exposure Information**

The device has been evaluated to meet general RF exposure requirement. The device can be used in portable exposure condition without restriction.