

WIFI camera user manual

FCC ID: 2A5LK-X8S

Be sure to read this instruction manual
before use

Product Introduction:



Function Definition:

1. Camera lens

- 2. Light sensor**
- 3. Switch the machine key**
- 4. Reset key**
- 5. Device charging interface: MicroUSB**
- 6. Memory card slot: maximum support 128GB (TF card file system FAT32)**
- 7. Charging indicator**

LED Description:

- 1. Hotspot mode red and blue light slow flashing, networking process blue light flashing, networking success blue light is always on**
- 2. Plug in the TF card is recording, the red light flashes slowly, and the red light is always on when there is no TF**
- 3. Orange charging indicator, charging, orange light is always on after the battery is full orange light off**
- 4. Blue light - WIFI indicator, red TF recording status indicator, orange charging indicator**

—. Boot/shutdown:

- 1. In the shutdown state, push the power button to the "ON" position, after the red light and the blue light are**

at the same time (15 seconds long), the blue light is slow flashing, the hotspot is turned on, when the TF card is not plugged in (the red light is long on), when the TF card is plugged in (the red light is slow flashing), it indicates that it is in the recording state. The machine is powered on.

2. In the power-on state, push the power button to the "OFF" position and the machine is in the shutdown state.

二 . Client software download

1. Install by scanning the QR code: Android/iPhone Universal Software QR Code. (Pictured below)





三、 Mobile client operation guide

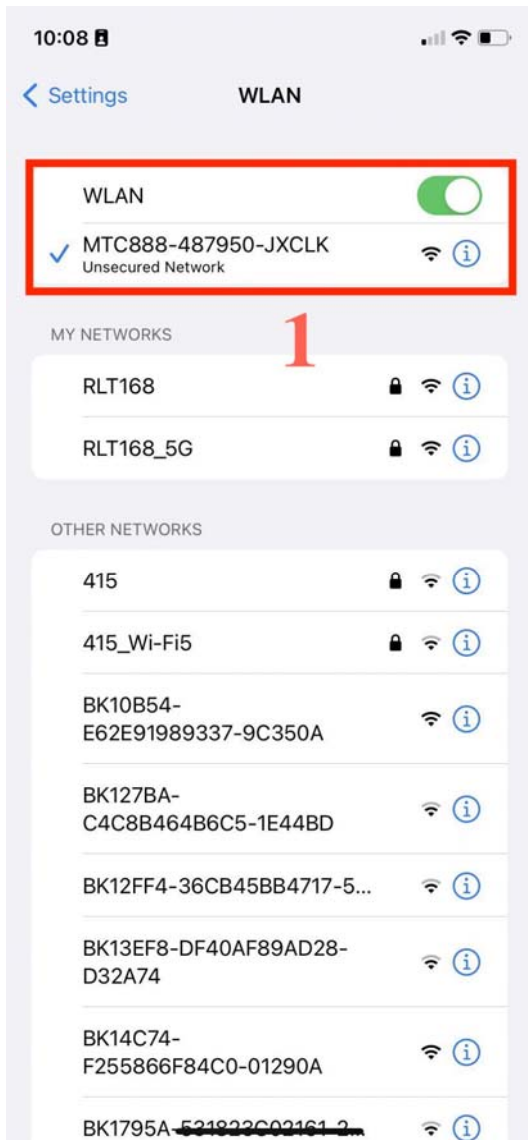


图 1

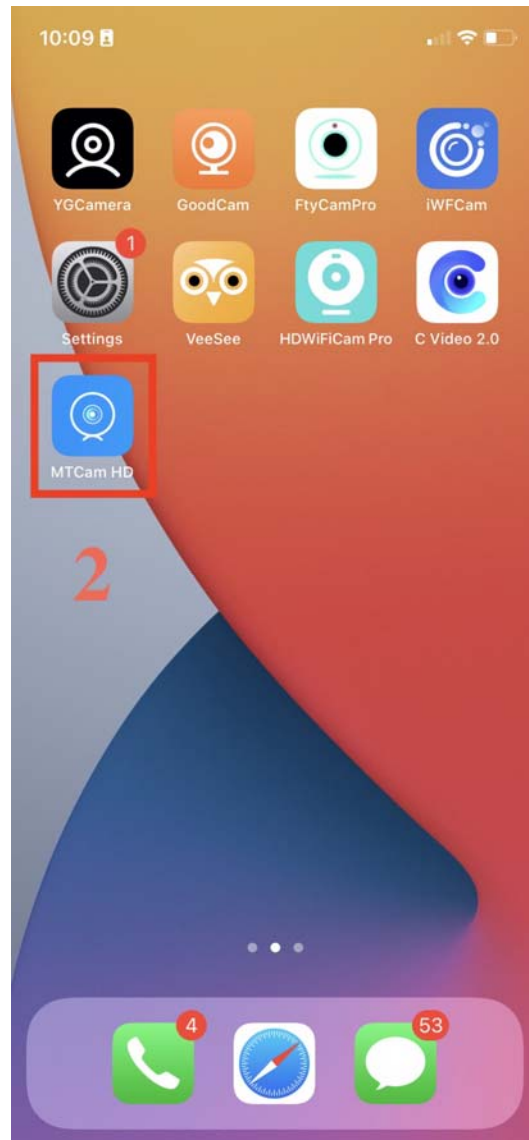


图 2

❖ Support mobile WIFI, mobile phone hotspot WIFI, router WIFI (to achieve a variety of ways to network three-point remote)

a、Add AP Camera (Close-up Viewing)

1. After the device is turned on (blue light slow flashing), the phone opens the WIFI settings, connects to the hotspot in MTC888-XXXXX format, (some

mobile phones will prompt: the current WLAN network can not access the Internet, do you switch to other networks?) Click Cancel and the device shows Connected. (Figure 1) (THE UID code is the WIFI name).

2. Click on the icon to open the "MTcam" APP software (Figure 2).

3. Open the main interface of the APP to automatically pop up the dialog box (Figure 3), click OK to enter, automatically pop up "Yes/No" change password dialog box (Figure 4), device (original password: 8888). After clicking "Skip", a dialog box (Figure 5) pops up, click "No/Ignore" at this time the point-to-point AP direct connection can be realized in a network-free environment, and the device can be opened.

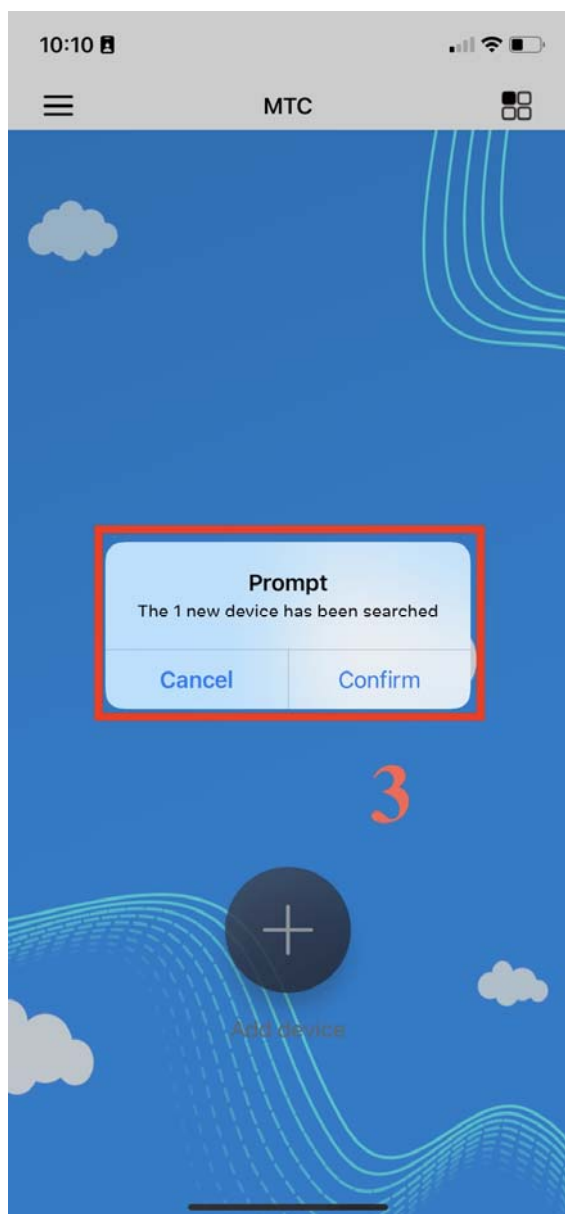


图 3

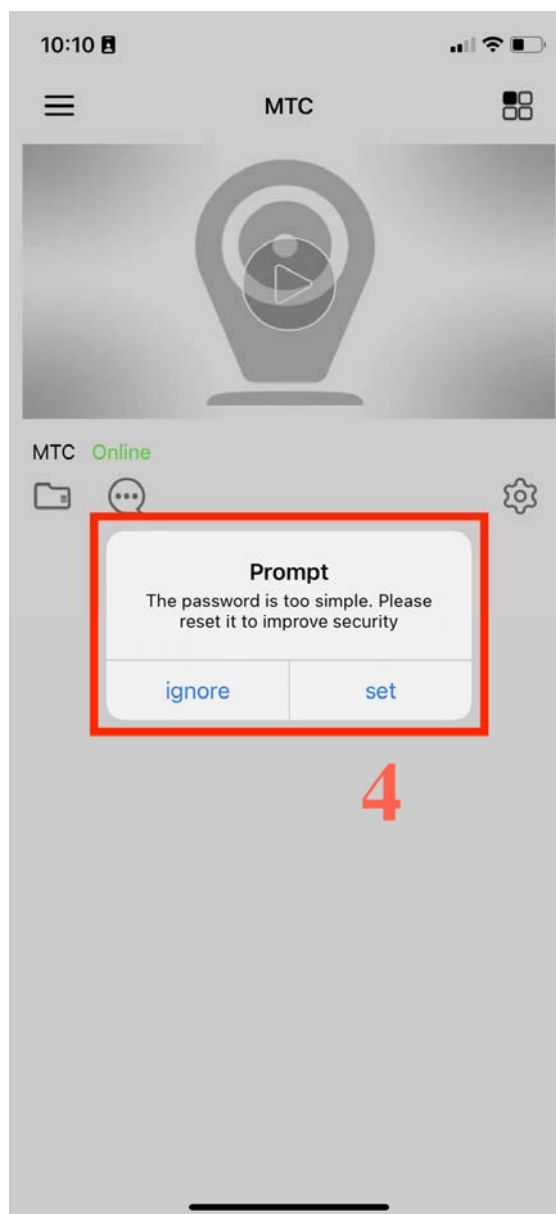


图 4

b 、 Bind router/mobile phone WIFI hotspot (remote viewing)

Method one : (Figure 5) Click "Yes" to enter the wifi configuration interface (Figure 8), select mobile wifi, mobile phone hotspot wifi, (the device should be placed in the mobile wifi about 5 meters to 10 meters),

the name of the router wifi, and then enter the wifi password, click to confirm the connection to the wifi. The camera will change from offline to online, ready to be viewed remotely (Figure 6).

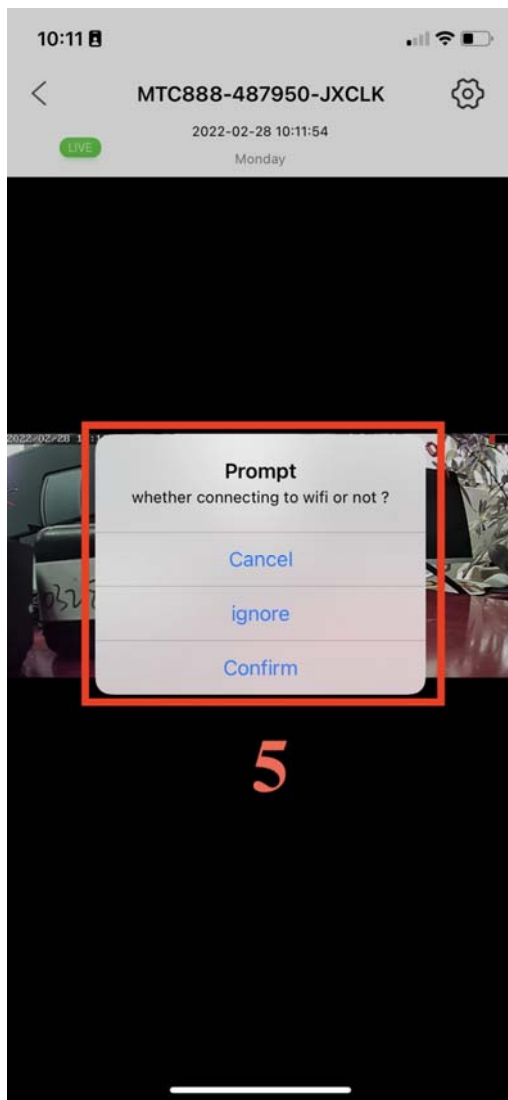



图 5



图 6

Method two 、 click  (Figure 6) after the pop-up options menu (Figure 7), click the "Network Configuration" option, enter the wifi configuration

interface (Figure 8), select mobile wifi, mobile phone hotspot wifi, (the device should be placed in the mobile wifi 5 meters to 10 meters), the name of the router wifi, and then enter the wifi password, click to confirm the connection



图 7

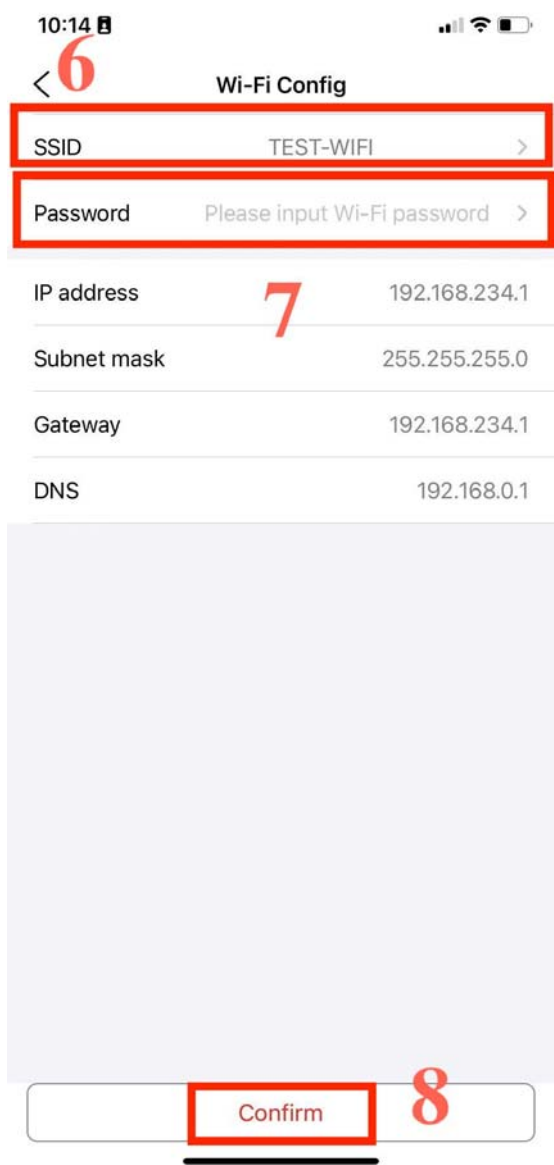


图 8

Wait for the camera to connect to the router/mobile phone WIFI hotspot, which takes about 2 to 3 minutes. The camera will change from offline to online, ready to be viewed remotely (Figure 6).

C、 Function introduction

1. Introduction to the functions of the video playback interface (Figure 6)

- 1) Brightness adjustment**
- 2) Contrast adjustment**
- 3) Turn on/off the IR night vision light**
- 4) Turn on/off the LED indicator**
- 5) Set the video score rate**
- 6) Turn listening on/off**
- 7) Take a picture**
- 8) Video recording**
- 9) Switch images horizontally**
- 10) Switch images vertically**
- 11) Displays the current date and time**
- 12) Settings: You can make relevant settings on the device (this machine default password 8888)**

四、charge

1) Insert one end of the USB cable into the local USB port, the other end into the USB port of the charger, the charging time is generally about 3 hours to fully charge.

2) When the charger is plugged in while the machine is recording, the machine can charge and record at the same time.

五、Questions and answers

1. Remote monitoring is not smooth. Please choose the right clarity according to the network environment at the time.

2.TF card is not saved. The first time you use the TF card you have to format it once on the machine.

3. Can't connect to the network. Please choose the connection method according to the nature of your network.

4.APP watch TF card videos remotely is not smooth. Due to the difference in the decoding ability of mobile phones. You can adjust the device recordings to suit the clarity of your phone.

5. If the password is accidentally forgotten. Press and hold the device reset key for 10 seconds to reset the

factory settings, then delete the device in the APP and re-search for the connected device.

6. The phone can not receive alarm messages, please select "MTcam" APP in the mobile phone settings - notification and status bar - notification management, the software enters the settings, open the allow notifications option.

7. When the equipment works for a long time, especially when the infrared light is turned on, the machine shell will be relatively hot, which is a normal phenomenon.

FCC Statement

This device complies with part 15 of the FCC Rules.

Operation is subject to the following two conditions: (1)

This device may not cause harmful interference, and (2)

this device must accept any interference received, including interference that may cause undesired operation.

Note: This equipment has been tested and found to comply with the limits for a Class B digital device, pursuant to part 15 of the FCC Rules. These limits are designed to provide reasonable protection against harmful interference in a residential installation. This equipment generates, uses and can radiate radio frequency energy and, if not installed and used in accordance with the instructions, may cause harmful interference to radio communications. However, there is no guarantee that interference will not occur in a particular installation. If this equipment does cause harmful interference to radio or television reception, which can be determined by turning the equipment off

and on, the user is encouraged to try to correct the interference by one or more of the following measures:

- Reorient or relocate the receiving antenna.**
- Increase the separation between the equipment and receiver.**
- Connect the equipment into an outlet on a circuit different from that to which the receiver is connected.**
- Consult the dealer or an experienced radio/TV technician for help.**

Note: The Grantee is not responsible for any changes or modifications not expressly approved by the party responsible for compliance. such modifications could void the user's authority to operate the equipment.

The device has been evaluated to meet general RF exposure requirement.

This equipment complies with FCC's RF radiation exposure limits set forth for an uncontrolled environment. This device and its antenna(s) must not be co-located or conjunction with any other antenna or transmitter.