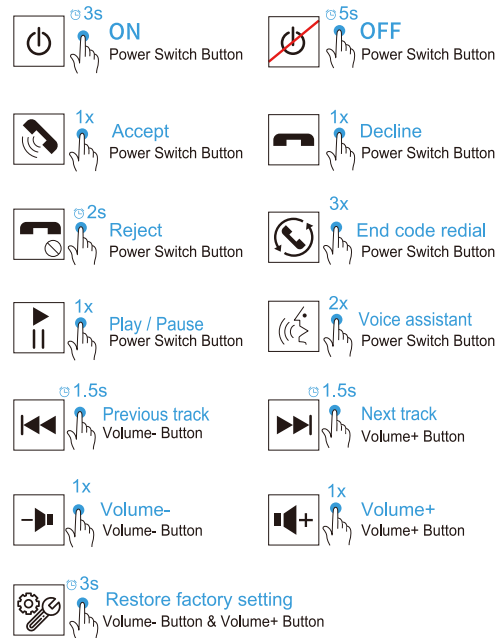
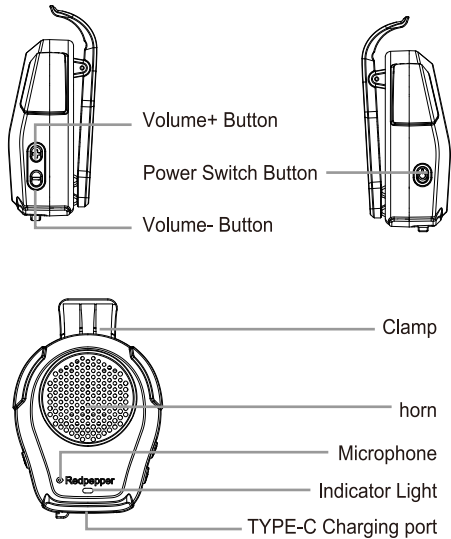


尺寸: 78*98 mm
128g铜版纸 双面印刷
折页: 对折

封面

Product overview



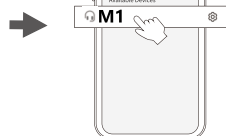
First time using

1. Turn on the speaker

ON



Hold 3s



2. Turn on the Bluetooth function of your phone, click **M1** to pair

Note:

1. After powering on, it will turn off if there is no pairing within 5 minutes. When the battery is low, the red light will flash.
2. If Apple users feel that the volume is low, you can turn off the corresponding setting on your phone (Settings - Sound and Haptics - Headphone Safety - Reduce Loud Sound).
3. When the power is less than 10%, the volume will automatically drop to the appropriate level, and it can be restored after charging.

Product Specification

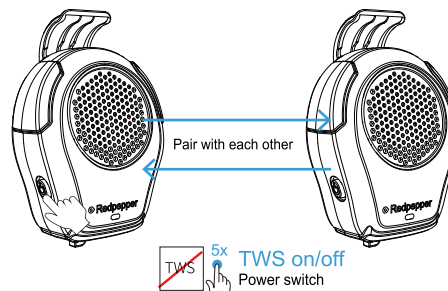
Product Name	Clip Bluetooth speaker	Speaker	28mm(2Q)2W
Bluetooth Pairing Name	M1	Battery Life	Music 5 Hrs/talk 8 Hrs
Bluetooth Version	V5.3	Battery Capacity	3.7V/500mAh
Rated Power	2W	Charging Time	About 1 hour 20 minutes
Maximum Power	4W	Call Noise Reduction	Supported

Indicator Light

Power On -----Light on for 1s
Power Off -----Light on for 1s
Low Battery Alarm -----Red Light Flashes
In Charging-----Light Keep On
Fully charged -----Light Off

TWS function

Note: Two M1 products are required to use the TWS function.
In the power on state, quickly 5 click the power key of either product to pair



FCC Warning

This device complies with part 15 of the FCC Rules. Operation is subject to the following two conditions: (1) This device may not cause harmful interference, and (2) this device must accept any interference received, including interference that may cause undesired operation.

Any Changes or modifications not expressly approved by the party responsible for compliance could void the user's authority to operate the equipment.

Note: This equipment has been tested and found to comply with the limits for a Class B digital device, pursuant to part 15 of the FCC Rules. These limits are designed to provide reasonable protection against harmful interference in a residential installation. This equipment generates uses and can radiate radio frequency energy and, if not installed and used in accordance with the instructions, may cause harmful interference to radio communications. However, there is no guarantee that interference will not occur in a particular installation. If this equipment does cause harmful interference to radio or television reception, which can be determined by turning the equipment off and on, the user is encouraged to try to correct the interference by one or more of the following measures:

- Reorient or relocate the receiving antenna.
- Increase the separation between the equipment and receiver.
- Connect the equipment into an outlet on a circuit different from that to which the receiver is connected.
- Consult the dealer or an experienced radio/TV technician for help.

The device has been evaluated to meet general RF exposure requirement. The device can be used in portable exposure condition without restriction.