



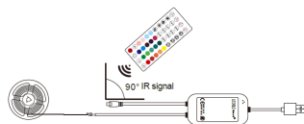
Thank you very much for choosing from Enteenly. This led strip adopts the current emerging APP technology and top manufacturing process, which is developed integrating years of R&D experience. The led strip can be controlled by remote or App. For proper installation and usage of the product, please read this instruction carefully.

1. Product Parameters

Working Voltage: DC5V
Current: 3A x 1CH
Working temperature: -10℃ - 45℃ (140℉ - 113℉)
Humidity: <80% RH

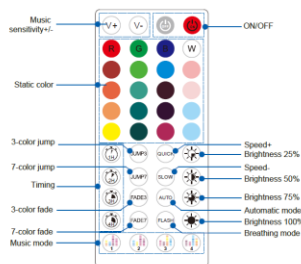
2. Connection

Connect the led controller to your LED strip and power, the below photo is for your reference.



EN

3. Remote Control



Please pointing at the sensor of the remote control receiver to control the light.



EN

4. Warranty instructions

The one-year warranty of our products is only applicable to all operations that conform to the instructions. The warranty does not include the following:

- Any change, amendment, deletion or scribbled purchase labels or instructions.
- Failure due to damage, incorrect connection or misuse.
- Because of the natural environment rather than the inherent causes of the product (such as lightning, flood, etc.). The bad phenomena of fire, etc.
- The product has been opened or disassembled.
- Adverse consequences arising from use, maintenance or custody do not conform to product specifications (e.g. damp, corrosive).
- Any other matter caused by product defect, appearance distortion, appearance damage or external force Physical injury.

EN

5. Note

With the USB plug, the fairy light can be powered by laptop, power bank, wall charger and etc.. please ensure that the input voltage is DC5V, over voltage will damage the Bluetooth controller and the copper wire.



Download App

Android 6.0 iOS 10.0 2.4Ghz

EN

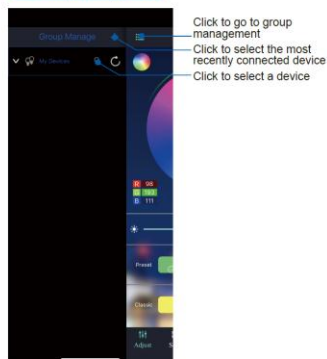
6. App introduction

6.1 Main Interface



EN

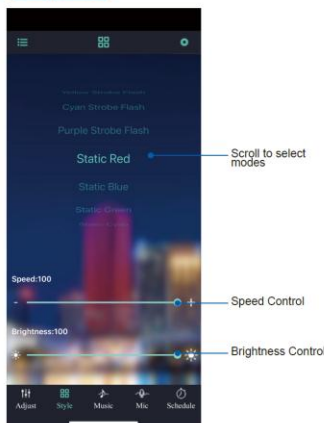
6.2 Group Management



NOTE:
Enter the device list interface once again:
Click the device list icon in the upper left corner of the interface.
Refresh the device list:

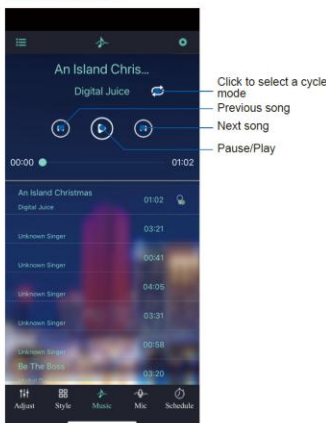
EN

6.3 Style Mode



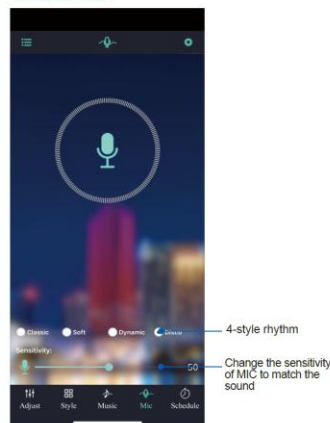
EN

6.4 Music Mode



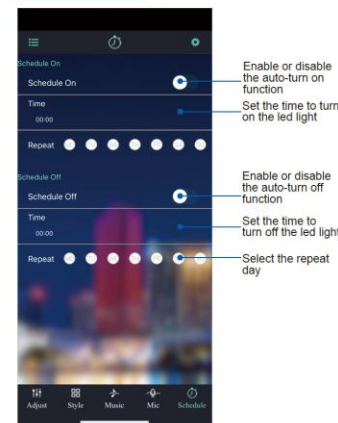
EN

6.5 Mic Mode



EN

6.6 Schedule Mode



EN

Contact Information
Manufacturer: OYA Smart Lighting (ShenZhen) Co., Ltd
Address: No.32 Second Road, New Qiaotang Industry, Dalang, Longhua, ShenZhen, china
Email: ledsupport@en-teenly.com

EU REP
Company E-CrossStu GmbH
Address: Felix-Dahn-Str 4, 70597 Stuttgart

CE **RoHS** **REACH** **WEEE** **Recycle** **House** Made in China

This device complies with part 15 of the FCC Rules. Operation is subject to the following two conditions: (1) This device may not cause harmful interference, and (2) this device must accept any interference received, including interference that may cause undesired operation.

Any Changes or modifications not expressly approved by the party responsible for compliance could void the user's authority to operate the equipment.

Note: This equipment has been tested and found to comply with the limits for a Class B digital device, pursuant to part 15 of the FCC Rules. These limits are designed to provide reasonable protection against harmful interference in a residential installation. This equipment generates uses and can radiate radio frequency energy and, if not installed and used in accordance with the instructions, may cause harmful interference to radio communications. However, there is no guarantee that interference will not occur in a particular installation. If this equipment does cause harmful interference to radio or television reception, which can be determined by turning the equipment off and on, the user is encouraged to try to correct the interference by one or more of the following measures:

- Reorient or relocate the receiving antenna.
- Increase the separation between the equipment and receiver.
- Connect the equipment into an outlet on a circuit different from that to which the receiver is connected.
- Consult the dealer or an experienced radio/TV technician for help.