

Smart Music LED Ceiling Light with Speaker English Manual

Bluetooth Connection

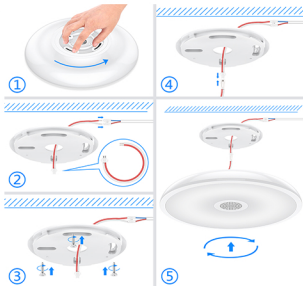
For the first time you use it or never pair with "AnSLong" after moving the equipment, please have it paired according to the steps below.

Music Connection

Enter the System Settings - Bluetooth - to discover and connect the device name "AnSLong". Once connected, you will hear the connection tone.



Installation Steps



Step 1: Screw off the hanging plate on the lamp

Step 2: Connect the household wire to the wire with terminal (as the single short wire shown in Figure 2), and pass the connected wire through the hanging plate

Step 3: Perforated in the cement ceiling and fixed the hanging plate on the ceiling by three screws

Step 4: Connect the wire with terminal to the wire on the lamp

Step 5: Turn the lamp body clockwise to fix it on the hanging plate



Step 1: Lock the hanging plate on the lamp by one screw

Step 2: Connect the wire terminal in the socket (as the E27 socket shown in Figure 2) to the wire terminal on the lamp

Step 3: Fix the socket to the lamp by three screws

Step 4: Install the socket to the household connector

Three-gear light modes via wall switch:

The First Gear: Switch on to daylight white (default light);

The Second Gear: Switch off and on after the first gear to go to the rhythm mode which color change follow with music rhythm, brightness change follow with volume;

The Third Gear: Switch off and on again after the second gear to go to seven single colorful lights. (Press the wall switch once to change a color)

Note: The light will be default white light after switched off 5 seconds



Specification

NO.	Item	Parameter
Light	Item Weight(KG)	0.54kg
	Input Voltage(V)	100-240V/50-60Hz
	Input Power(W)	18W
	Size(MM)	D:280 H:60(mm)
	CRI	White>0.8
	Luminous Flux(LM)	1600lm
	Color Temperature(K)	6300-6800 ,Tolerance: ±250K
	Light Decay	<10%, T=25°C; RH=90% H=2000
	Certificati On	CE PSE
	Waterproof Rating	IP45
Audio	Audio Power(W)	5W, 4Ω, THD+N=10%, 10Hz
	Frequency Response	40Hz-20KHz, Nonuniformity: ±3dBm
	Signal to Noise Ratio(SNR)	>80dBm P=1W; A-weight
	Volume Control	Bluetooth
	Bluetooth Distance	<10m, Straight line distance and no obstacles

Danger:

1. Before installing, cut off the power supply to prevent electric shock.
2. Do not install the lamp on a damp ceiling and wear gloves when installing.
3. You do not need to pay attention to the phase when installing. All you have to do is connecting the neutral conductor (white) and live conductor (red) to one power cable of the lamp with a luster terminal
4. Our lights have no ground wire / earth (green / yellow). However, we have taken measures to protect the power supply in accordance with the CE certification standard. So do not worry about security issues.
5. Our lamps are not dimmable, so no dimmer switches should be installed together with our lamps, otherwise this would interfere with normal use.



Federal Communications Commission (FCC) Statement. This device complies with part 15 of the FCC Rules. Operation is subject to the following two conditions:

- (1) This device may not cause harmful interference, and
- (2) this device must accept any interference received,

including interference that may cause undesired operation. Note: This equipment has been tested and found to comply with the limits for a Class B digital device, pursuant to part 15 of the FCC Rules. These limits are designed to provide Reasonable protection against harmful interference in a residential installation. This equipment generates, uses and can radiate radio frequency energy and, if not installed and used in accordance with the instructions, may cause harmful interference to radio communications. However, there is no guarantee that interference will not occur in a particular installation. If this equipment does cause harmful interference to radio or television reception, which can be determined by turning the equipment off and on, the user is encouraged to try to correct the interference by one or more of the following measures:

- Reorient or relocate the receiving antenna.
- Increase the separation between the equipment and receiver.
- Connect the equipment into an outlet on a circuit different from that to which the receiver is connected.
- Consult the dealer or an experienced radio/TV technician for help.

Warning: Changes or modifications made to this device not expressly approved by Shenzhen Ruineng Technology Ltd may void the FCC authorization to operate this device. Note: The manufacturer is not responsible for any radio or TV interference caused by unauthorized modifications to this equipment. Such modifications could void the user's authority to operate the equipment.

RF exposure statement:

The transmitter must not be colocated or operated in conjunction with any other antenna or transmitter. This equipment complies with the FCC RF radiation exposure limits set forth for an uncontrolled environment. The installation and use of this product are not restricted.