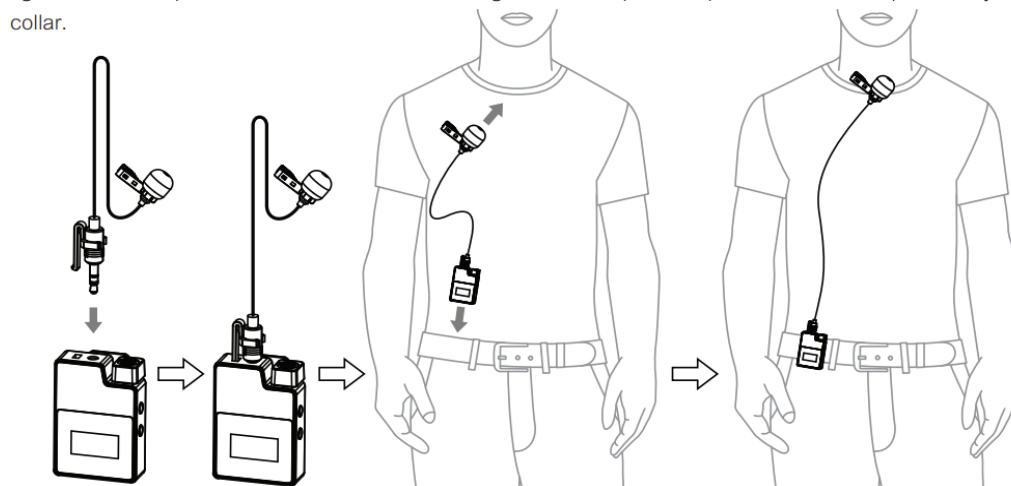


## Additional Instructions

### Transmitter (TX)

#### 1. Use external microphone:

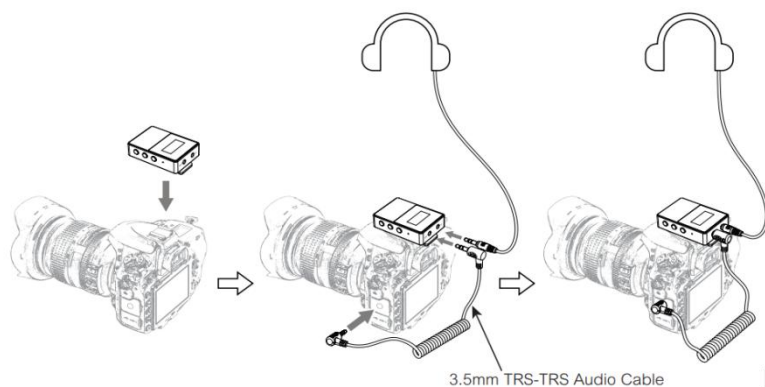
Insert the 3.5mm TRS microphone input cable into the transmitter's 3.5mm TRS external microphone port and tighten it, then clip the transmitter to the belt through the belt clip and clip the lavalier microphone to your collar.



### Receiver (RX)

#### 1. Work with Camera:

Fix the receiver through the belt clip to the camera's hot shoe mount, then connect the receiver with camera through the 3.5mm TRS-TRS audio cable; Insert the headphone into the monitoring port for monitoring.



Tips: Default paired at factory and ready for use when powered on

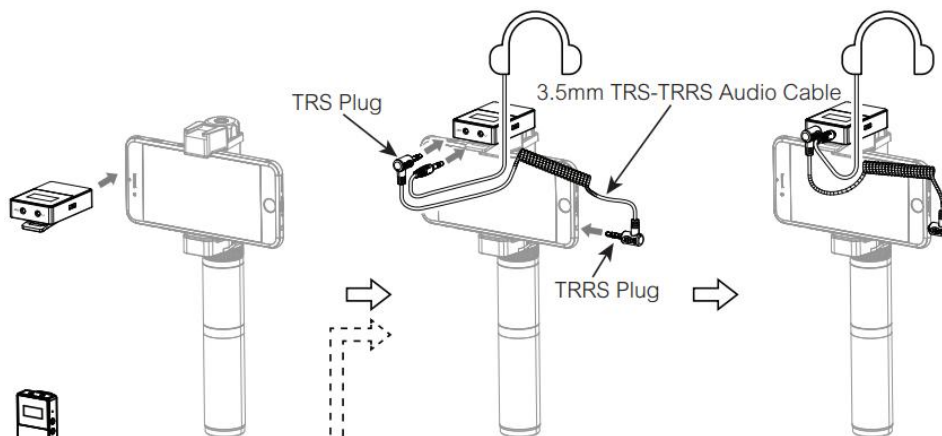
- 1) After turning on the transmitter
- 2) press the power button and the volume “-” button simultaneously until the display screen flickers;
- 3) turn on the receiver, the receiver indicator flickers three times, meaning that the pairing is successful.
- 4) Shortly press the power button of the transmitter to exit the pairing mode for operation.

## Connecting Requirement

### 1. Work with Smartphone or Tablets:

Clip the receiver to the cold shoe mount through the belt clip; Connect the receiver with the mobile phone through the 3.5mm TRS-TRRS audio cable and pay attention to the access to the audio output jack of the receiver is the 3.5mm TRS plug, and the access to the mobile phone is the 3.5mm TRRS plug; Insert the headphone to the 3.5 mm TRS/TRRS monitoring port for monitoring.

Note: If your phone does not have a 3.5mm headphone jack, you need a 3.5mm TRRS to USB-C/ Lightning Audio Cable Adapter to use this microphone on your smartphone. Additional USB-C to 3.5mm Audio Adapter may be needed in newer smartphone models to allow a 3.5mm input. iPhones with a Lightning input will require a Lightning to 3.5mm adaptor.



## HOW TO CONNECT

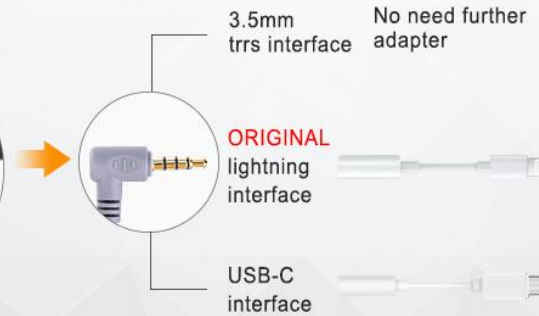
### Step1

The 3.5mm TRS Black end plug into the microphone OUTPUT interface of Receiver



### Step2

The 3.5mm TRRS Grey end plug into the smartphone interface adapter



### Step3

Plug into the smartphone



#### Tips:

##### For Android phones

Android phones can use this microphone to record video but some Android native systems do not support external microphones. We recommend to use third-party app video recording software (like "DU Recorder" "Mobizen Screen Recorder" "iLos Screen Recorder" and other video apps) to solve this problem.






Android phone with a 3.5mm port can be directly connected to the receiver. If your Android phone doesn't have 3.5mm port, you need to connect your phone to "3.5mm to Type-C adapter" first, then connect it to the receiver. Here is link of how to use our wireless microphone to Android phones: [Android Mobile phone used YouTube](#)

##### For iPhone

For iPhones 7 and later series, please use original iPhone 3.5mm-lightning adapter. Here is link of how to use our wireless microphone to iPhones: [iPhone Mobile phone used YouTube](#)

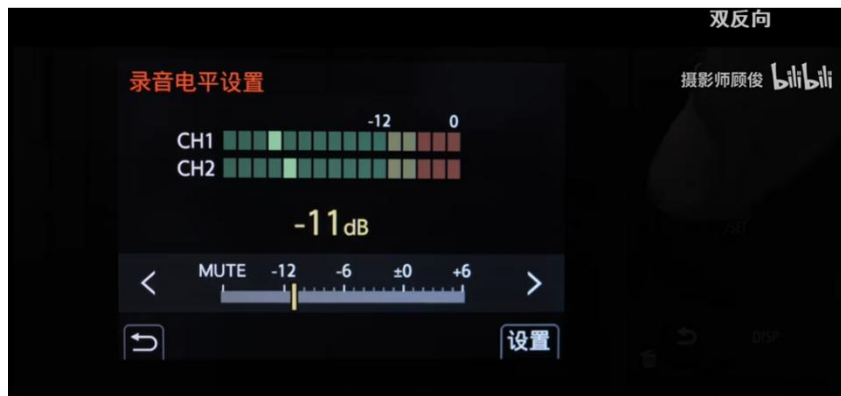
## 2. Work with Computer or Laptop

First of all you have to make sure what type of audio input jack standard (TRS or TRRS) of your PC, then use the 3.5mm TRS/TRRS 2 in 1 Audio Cable included in the package. for certain brands of laptop like Macbook, you need extra adapter.

<p><b>Attach the microphone to computer or laptop.</b> Set up for Windows</p> <ol style="list-style-type: none"> <li>1. Connect the microphone to the computer with the supplied charge cable.</li> <li>2. Select the microphone as the default device and click Start Menu→Control Panel→Sounds and Audio Devices.</li> </ol>  <p>- Select BY-BMM400 and click OK.</p> 	<p>- Select BY-BMM400 and click OK.</p>  <p>3. When the BY-BMM400 is connected to a Windows computer for the first time, the computer will show "Found New Hardware wizard," follow the instructions on screen to complete installing drivers for the BOYA BY-BMM400. The above operation may need to be repeated when connecting to a new computer or another port on the same computer.</p>	<p><b>Set up for Apple System</b></p> <ol style="list-style-type: none"> <li>① Connect the BOYA BY-BMM400 to Type-C port on your computer.</li> <li>② Choose Apple Icon→System Preferences→Sound Icon</li> </ol>  <p>- Select BY-BMM400 as sound input.</p> 
--	--	--











### 3. Work with Camera

Tips: How To Reduce Microphone Noise ?



### Function Keys and Indicators Instruction

## Function Button Instruction

<b>Lavalier Transmitter / Receiver</b>    	<b>Power / Muting Button</b> 	Long Press	Power On / Off
	<b>SET Function Menu</b> 	Short Press	Muting Mode (This function is only for transmitter, when the mute function is turned on and the screen is lighted up)
		Long Press	Enter the function adjustment menu
	<b>+ Button</b> 	Short Press	Function Adjustment (+)
	<b>- Button</b> 	Short Press	Function Adjustment (-)
<b>Hand-held Transmitter</b>  	<b>Power / Muting Button</b> 	Long Press	Power On / Off
		Short Press	Muting Mode (Only goes into effect when the screen lights up)
	<b>"Low cut/ Normal" Sound Switch</b> 	Push-up	Low cut
		Push-down	Normal
	<b>Signal Strength "High/Low" Switch</b> 	Push-up	Signal strength--high
		Push-down	Signal strength--low

## Indicator Light Instruction

Transmitter	AUDIO	Green Light Keeps On	Normal Recording Status (This state is only for the transmitter, when the channel matches successfully, the receiver can pick up the sound)
		Red Light Keeps On	Muting Mode
		Red Light Flicker	Low-power reminder
	IR	Green Light Keeps On	Channel matches (No matter the channel matches or not)
		Red Light Flicker	Channel in the match... (only for IR Sync)
Receiver	A IR/RF B IR/RF	Green Light Keeps On	Normal working status after the channel matches
		Green Light Flicker	Channel doesn't match
		Red Light Flicker	Channel in the match... (only for IR Sync)
			Low-power reminder
		Red light keeps on	Channel closed

### Note:

1. The distance between transmitter and receiver should be more than 20cm. If it less than 20cm, the receiver may shut down the reception of wireless signal. So it's normal that the audio is intermittent.
2. Please stay within 1 meter when using auto IR sync, otherwise the signal may be weak and the sync will not be successful.
3. The working distance will be affected by the microphone antenna. Please protect the antenna to avoid any man-made damage.
4. The working distance will be affected by the surrounding environment. Please use it in open environment without interference and close the WIFI of the device itself.
5. Do not expose this product in rain or humid environment, otherwise there will be a danger of short circuit. Please keep it in dry environment.
6. For smart phone shooting, customers must separately purchase a USB C/Lighting to 3.5mm TRRS audio converting cable, and set the mobile phone mode to 'Flight Mode' to avoid incoming call interference.
7. The A and B frequency bands of the two transmitters are the same. Please do not adjust it to the same frequency band, otherwise they will not work but interfere with each other.

### QA Part

Question: How can I record clear sound?

Answer: Please set the volume of the recording device to 1/3 or 1/4 of its max volume. if you are worried about low recording volume, you can increase the volume of the microphone transmitter (15 levels of volume adjustment)

Question: Do I need to set anything in advance before use? I am most afraid of complicated settings.

Answer: No, the transmitter and receiver are automatically paired when turned on, and can be used when turned on.

Question: If I bought 2 sets to get 4 microphones would I be able to connect them all to the same receiver or would I have to use each individual receiver?

Answer: I'm sorry that the receiver of 1 mic version can only connect 1 transmitter, and the receiver of 2 mics version can only connect 2 transmitter at most.

Question: What warranty do I have on your products?

Answer: Our products are designed to ease your technical woes, not add to them. That's why all of our products feature a standard 30-day return period and a 1-year manufacturers warranty against any defects. Reach out to [fulaim@hotmail.com](mailto:fulaim@hotmail.com) for help.

## **FCC Statement**

This device complies with part 15 of the FCC rules. Operation is subject to the following two conditions: (1) this device may not cause harmful interference, and (2) this device must accept any interference received, including interference that may cause undesired operation.

Changes or modifications not expressly approved by the party responsible for compliance could void the user's authority to operate the equipment.

NOTE: This equipment has been tested and found to comply with the limits for a Class B digital device, pursuant to part 15 of the FCC Rules. These limits are designed to provide reasonable protection against harmful interference in a residential installation. This equipment generates uses and can radiate radio frequency energy and, if not installed and used in accordance with the instructions, may cause harmful interference to radio communications. However, there is no guarantee that interference will not occur in a particular installation. If this equipment does cause harmful interference to radio or television reception, which can be determined by turning the equipment off and on, the user is encouraged to try to correct the interference by one or more of the following measures:

- Reorient or relocate the receiving antenna.
- Increase the separation between the equipment and receiver.
- Connect the equipment into an outlet on a circuit different from that to which the receiver is connected.
- Consult the dealer or an experienced radio/TV technician for help.

The device has been evaluated to meet general RF exposure requirement. The device can be used in portable exposure condition without restriction.