

# Permanent Outdoor Lights

## USER MANUAL



This manual covers two different product versions. Please confirm which one you have before following the instructions.

- **Standard Model**
- **Customizable Model**



# SAFETY INSTRUCTION

---

## IMPORTANT

READ ALL THE SAFETY INFORMATION AND INSTAINSTRUCTIONS BEFORE INSTALLING OR SERVICING THIS PRODKEEP THIS MANUAL FOR REFERENCE.

## WARNING

### RISK OF ELECTRIC SHOCK

- Sockets used to power smart string lights should comply with all national and local electrical codes. If you are unsure of compliance requirements please consult your local electrician.
- Do not operate the bulbs without tightening string lights, making sure to unplug the smart string lights during installation to avoid damage to the power cord and lamp assembly during installation.
- Do not submerge when using on GFCI protection circuits.
- Do not use in water.Do not use extension cords or places where water may accumulate near water. Take care to keep the bulb at least 16 feet surface of the water.Keep the plug and socket dry.
- Do not install the smart light string in a position where you can step on it. Not be allowed for children to play smart string lights,should installed out of reach of children.
- ETL recommends testing GFCI circuits and outlets monthly to ensure proper operation.
- Regularly check the smart string lights for physical damage or other damage caused by outdoor exposure to components, and replace any damaged smart string lights components in time.

### RISK OF FIRES

- Smart String Lights are designed to be mounted with their individual keyhole mounting feature.
- Do not mount Smart String Lights by using the main electrical cord or the individual drop cords.

- Smart String Lights are designed to have limited link ability by using their electrical plugs and receptacles.
- Do not mount Smart String Lights in any position where the bulb is facing up.
- Do not allow the LED lamp assemblies to be in contact with combustible materials.
- LED lamp assemblies should hang freely and not be susceptible to repetitive damage caused by environmental conditions such as wind, rain, Not intended for installation in ceilings, soffits, cabinets, attics, or other enclosed spaces.

## CAUTION

**Suitable for outdoor/indoor use only.**

- DO NOT IMMERSE IN WATER.
- DO NOT EXCEED RATED CAPACITY



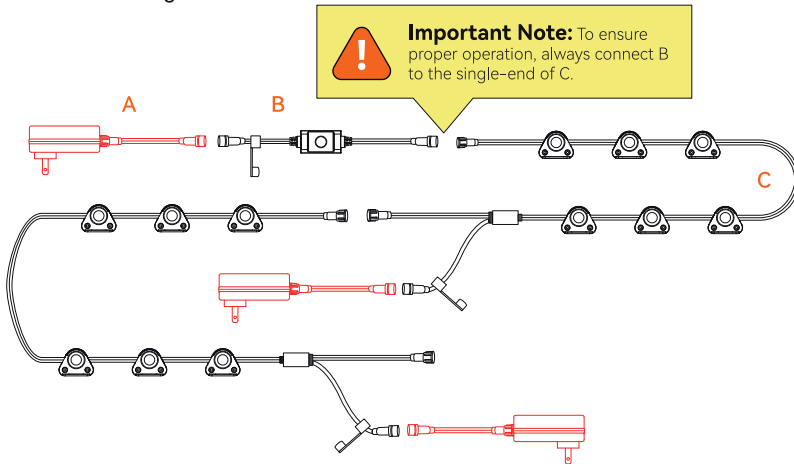
# ACCESSORY LIST

This manual covers two different product versions. Please confirm which one you have before following the instructions.

• **Standard Model**

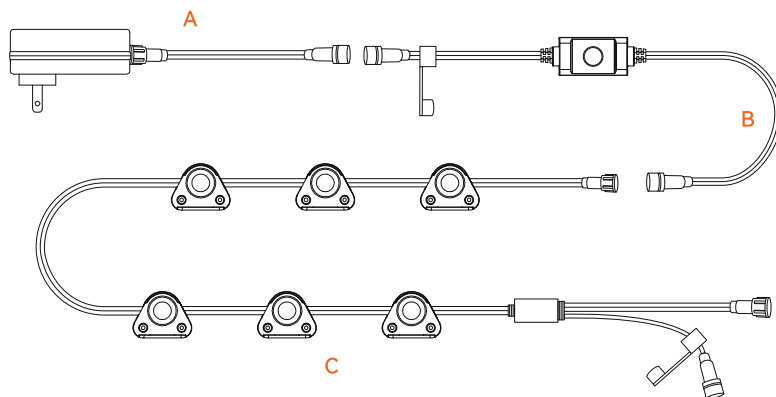
• **Customizable Model**

To optimize the installation experience, we offer three power connection options. You can choose the most suitable one based on the outlet location, as shown in the figure below.

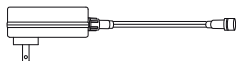


## ACCESSORIES LIST

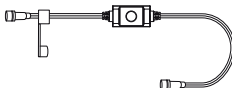
>>> Standard Model



A



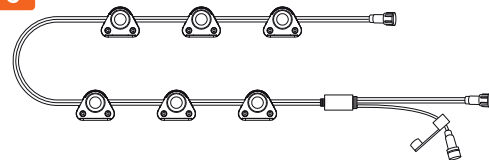
B



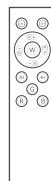
D



C

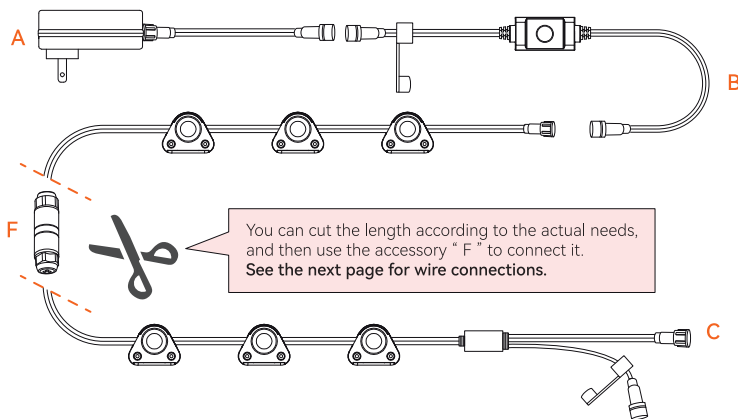


E

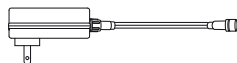


## ACCESSORIES LIST

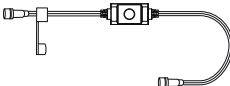
>>> Customizable Model



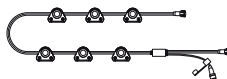
A



B



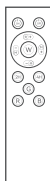
C



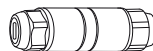
D

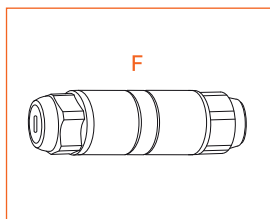


E

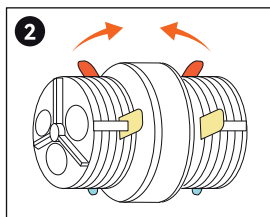
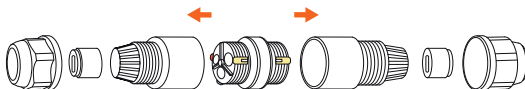


F

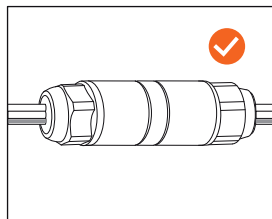
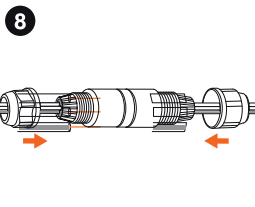
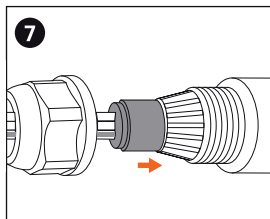
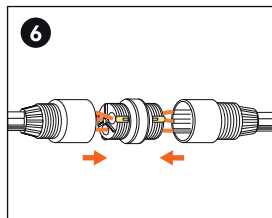
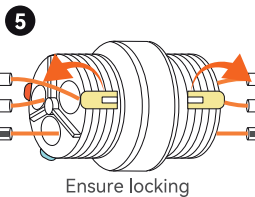
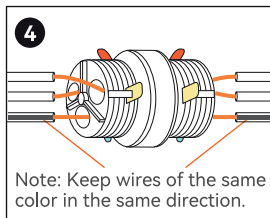
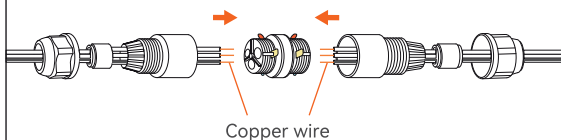




**1** Disassemble accessory F as shown



**3** Go through the wires in order





# INSTALLATION STEPS



## Important Note:

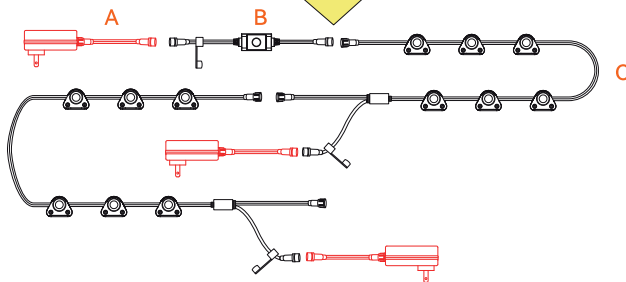
To ensure proper operation, keep this side facing the wall.

To optimize the installation experience, we offer three power connection options. You can choose the most suitable one based on the outlet location, as shown in the figure below.



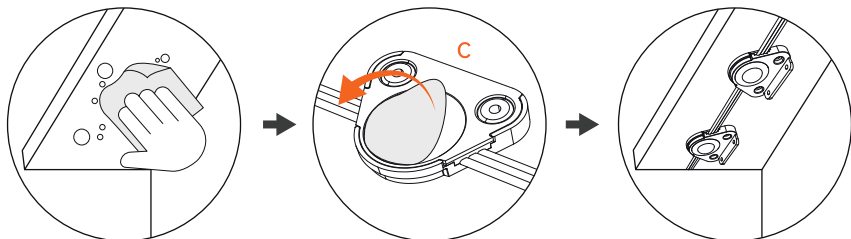
## Important Note:

To ensure proper operation, always connect B to the single-end of C.

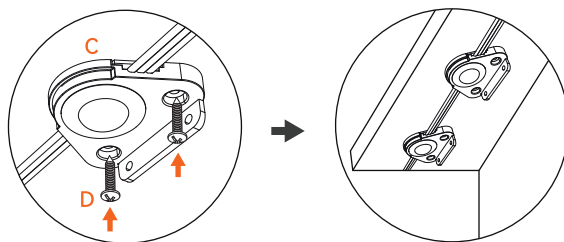




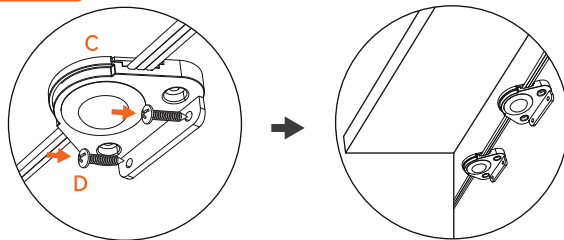
### Install with Adhesive



### Install with Screws - Front

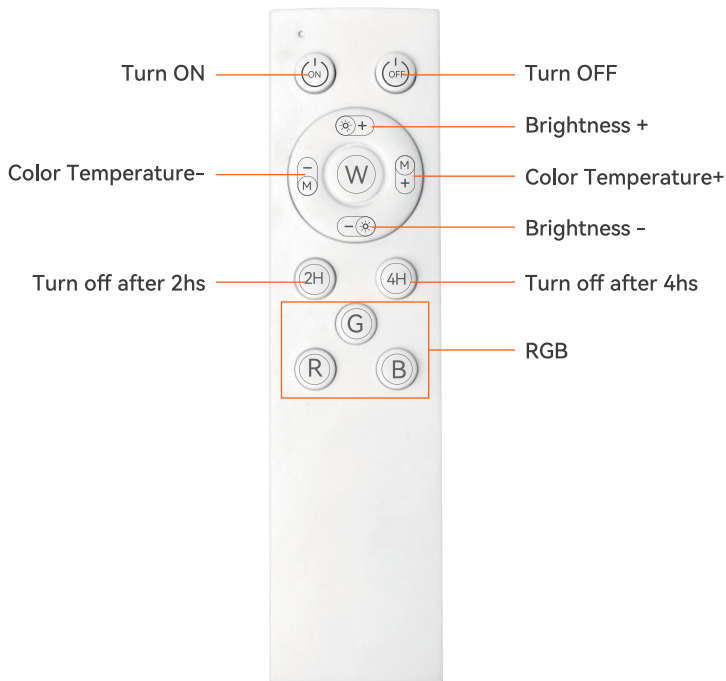


### Install with Screws - Side





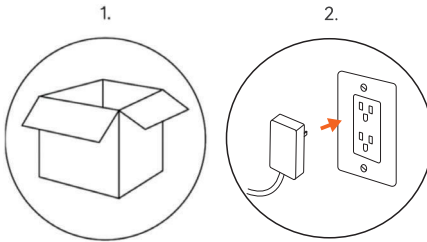
# REMOTE CONTROL





# APP

**Step: 1** **IMPORTANT: Please Unplug the Smart String Lights prior to mounting.**



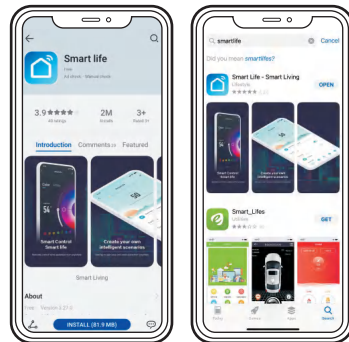
1. Carefully unpack Smart String Lights from the package.
2. Before installing, plug the Smart String Lights into an outlet to ensure all lights work properly.
3. Before hanging up, please test to confirm the Smart string lights can be connected to the APP.

## Step 2: Download

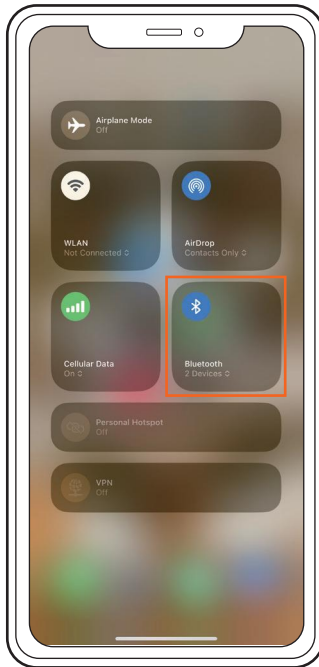
Download the APP from App Store or Google Play.



Scan the QR code to download



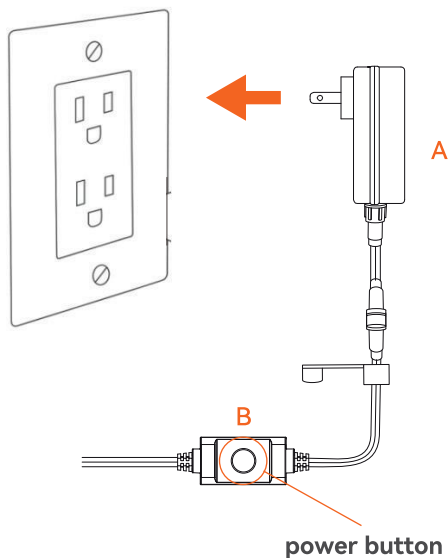
### Step 3



#### **Attention:**

Make sure your phone's Bluetooth is turned on.

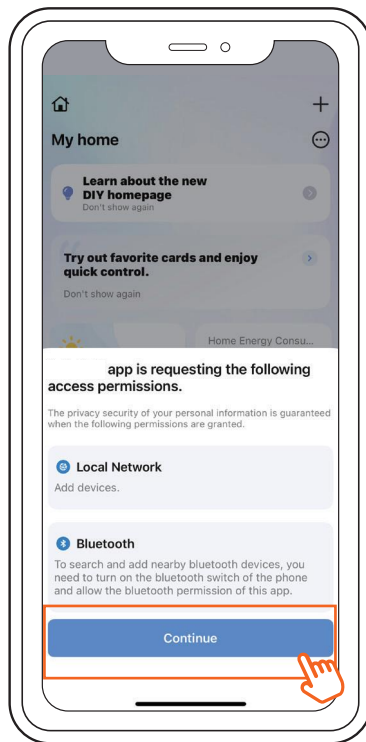
#### Step 4: Plug - In



#### Notes:

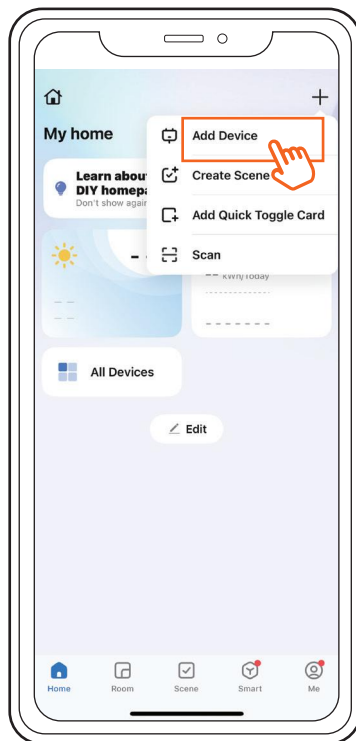
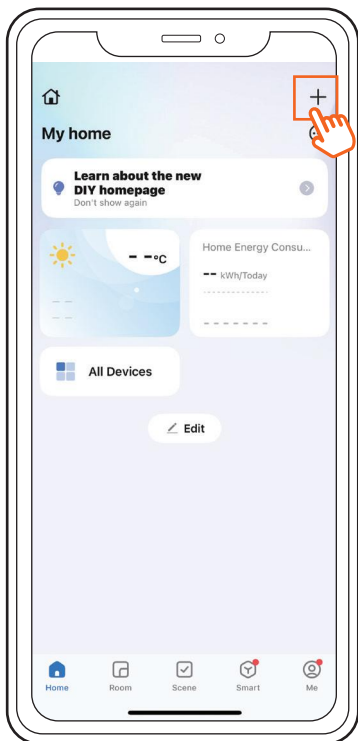
1. After power on, the light bulbs will automatically enter the connecting state;
2. If there is no connection after 3 minutes, the indicator lights will remain on. If you want to add a device at this time, you need to press and hold the **power button** on the controller for about 3 to 6 seconds until the lights blink rapidly.

## Step 5: Connect

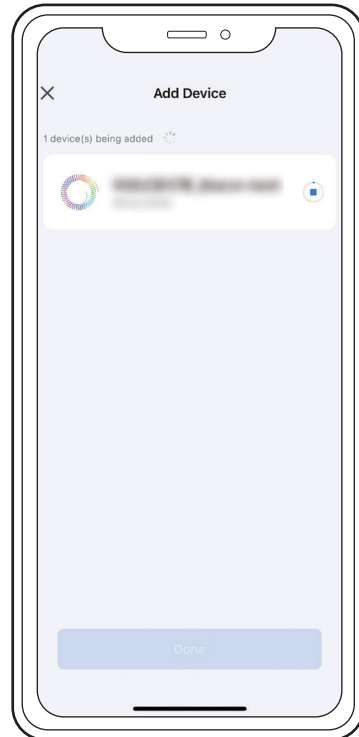
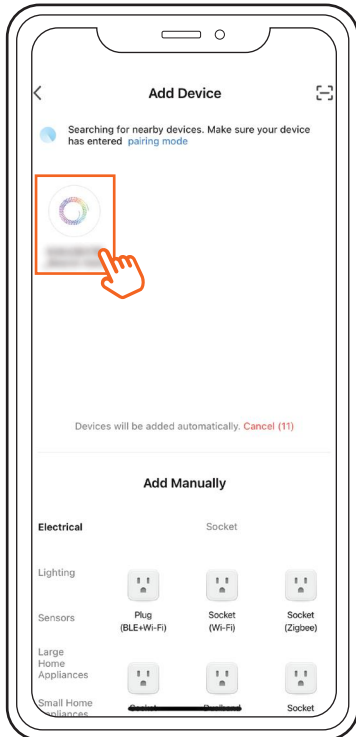


### Attention:

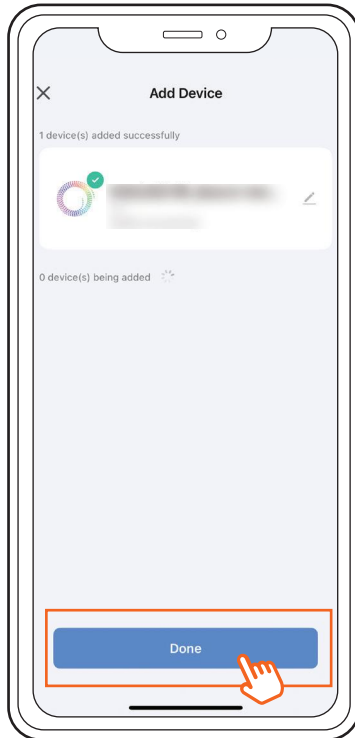
Make sure the app has Bluetooth access enabled.



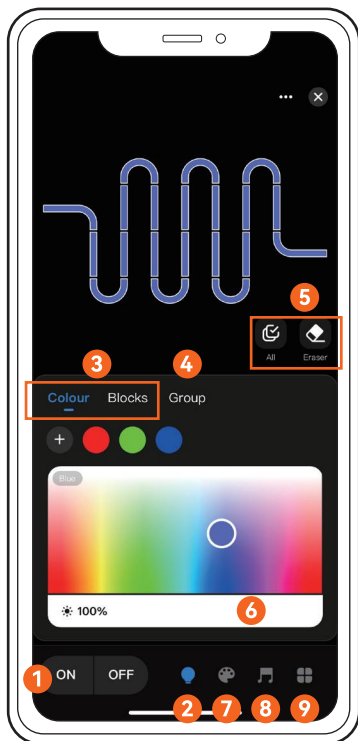
If the device search is unsuccessful, go back to step 4.





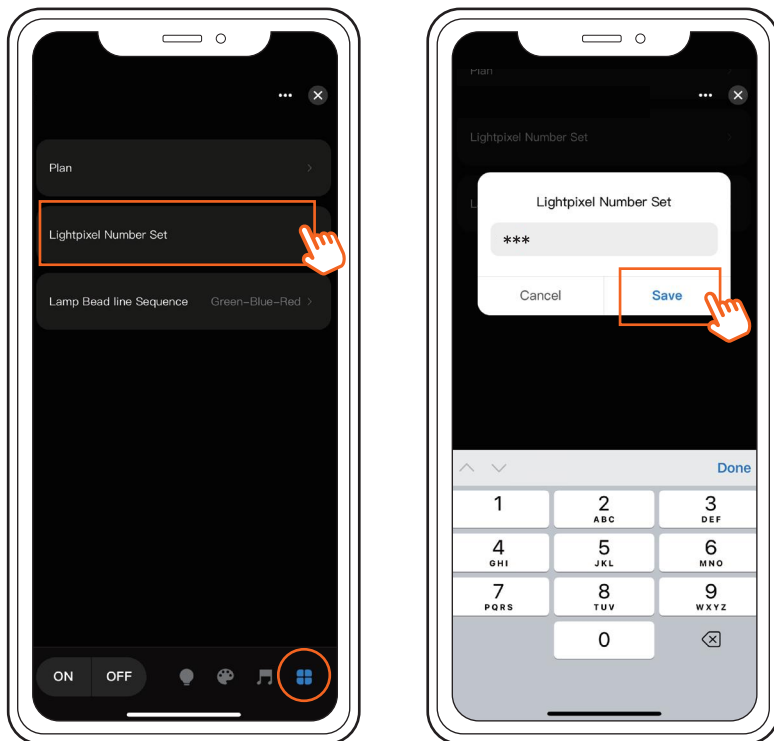


## Step 6: Interface Introduction



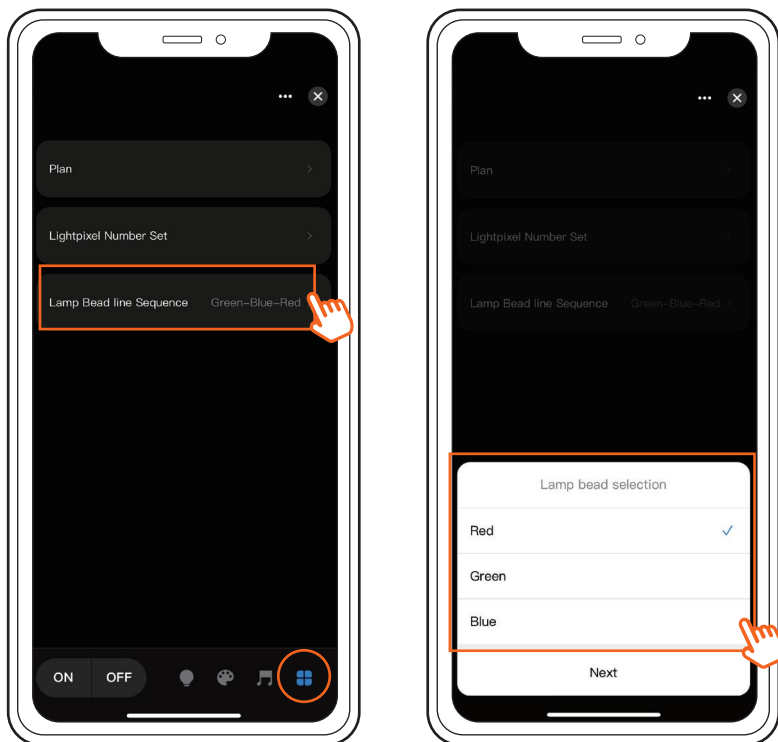
- 1 Turn ON / OFF
- 2 Lighting Settings
- 3 Color Monochrome Mode
- 4 Color Multi-color Mode
- 5 Custom Colors
- 6 Brightness Adjustment
- 7 Scene Display Interface
- 8 Music Movement
- 9 More Functions

## 9 More Functions — Lightpixel Number Set



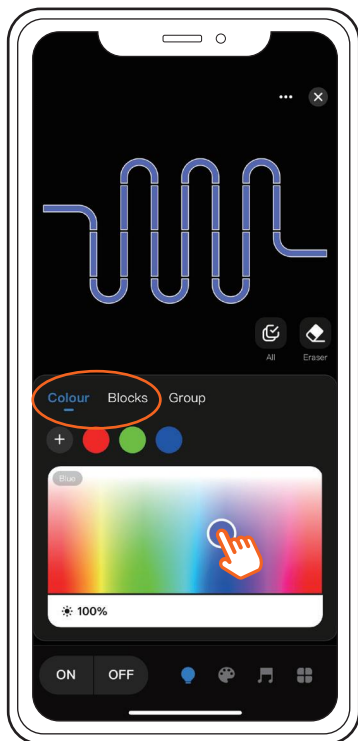
**Important Note:** For optimal performance, please set the correct number of bulbs before use.

## 9 More Functions — Lamp Bead Line Sequence

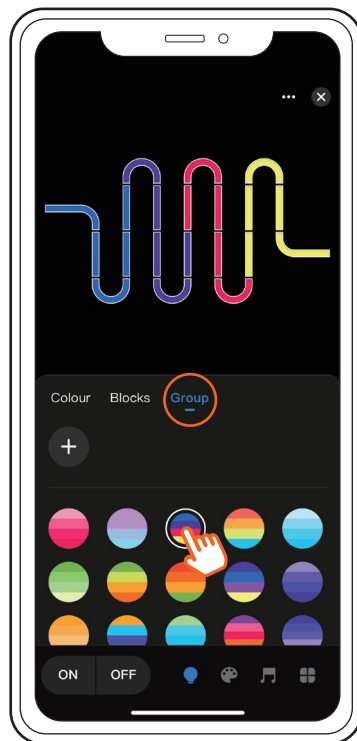


**Important Note:** For optimal performance, calibrate the bulb's color settings prior to use.

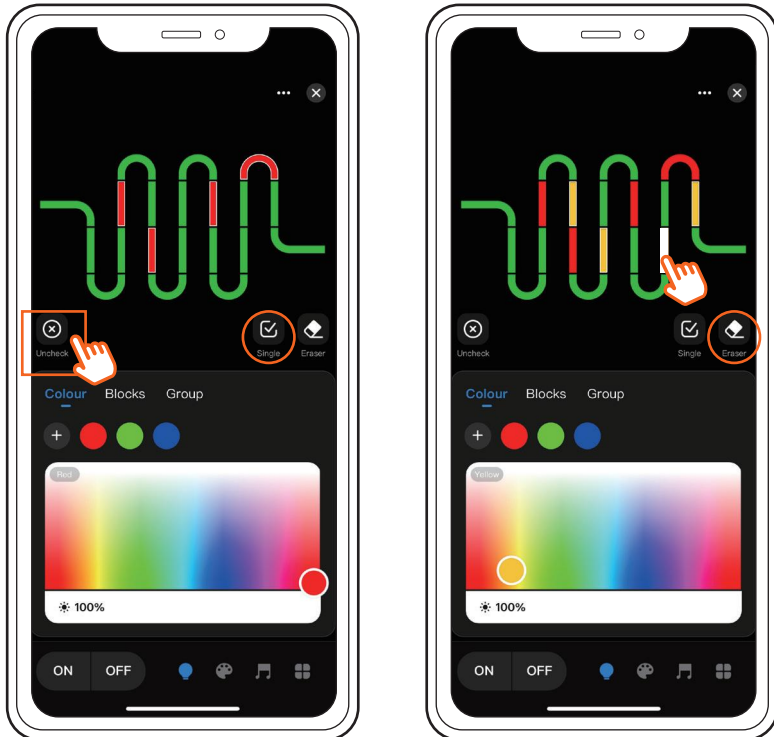
### 3 Color Monochrome Mode



### 4 Color Multi-color Mode

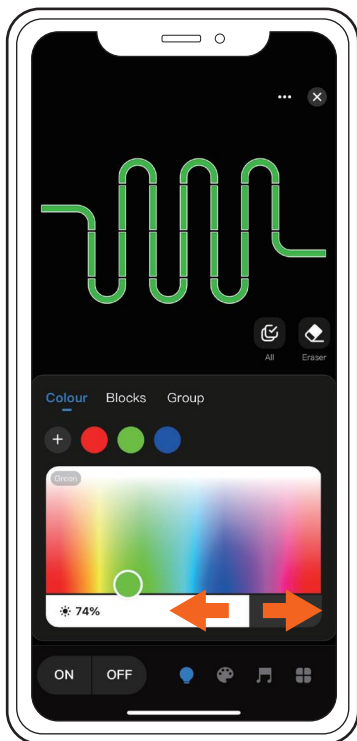


## 5 Custom Colors

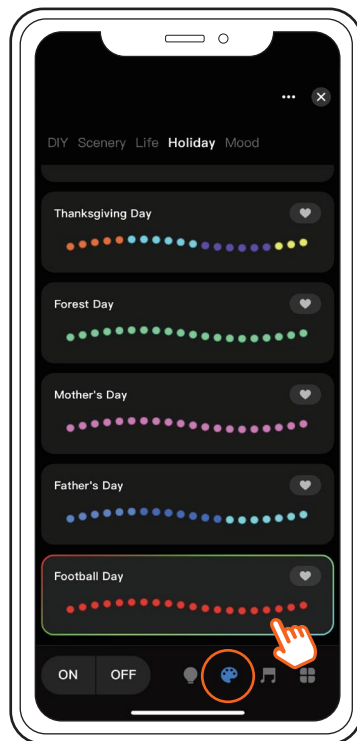


**Important Note:** To switch between different color adjustments, first click "Uncheck" to exit the current editing state.

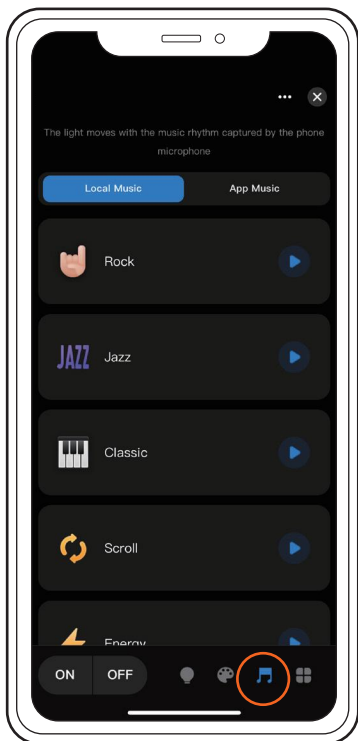
## 6 Brightness Adjustment



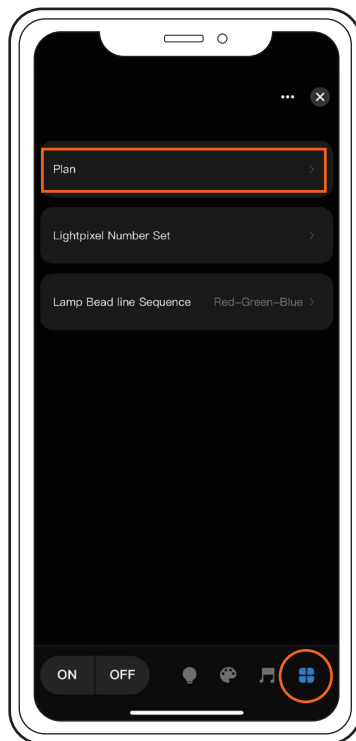
## 7 Scene Display Interface



## 8 Music Movement

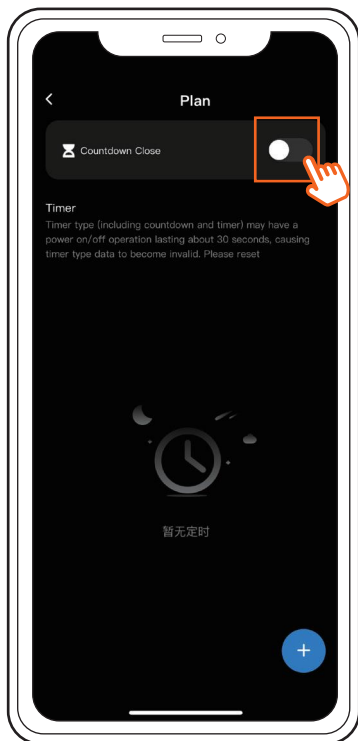


## 9 More Functions

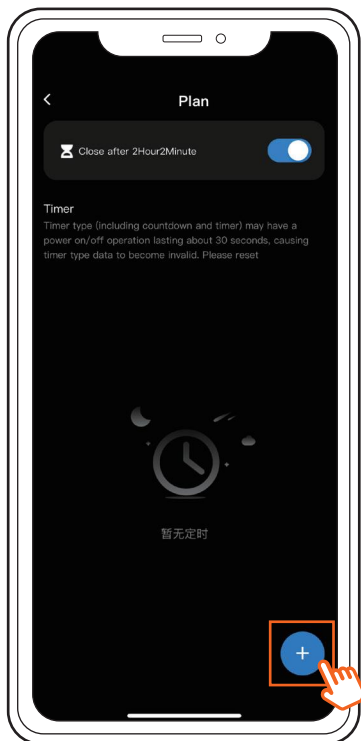




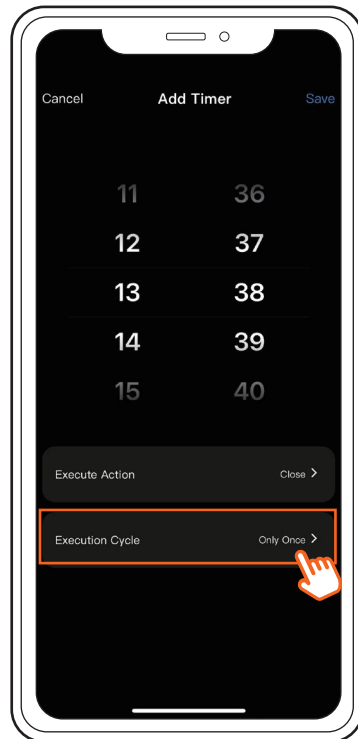
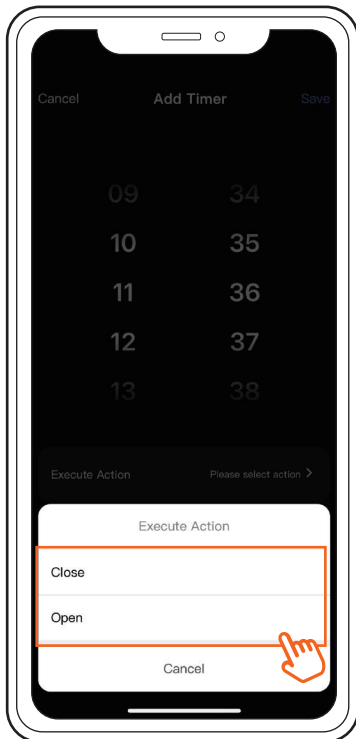
## 9 More Functions — Plan(Countdown Close)



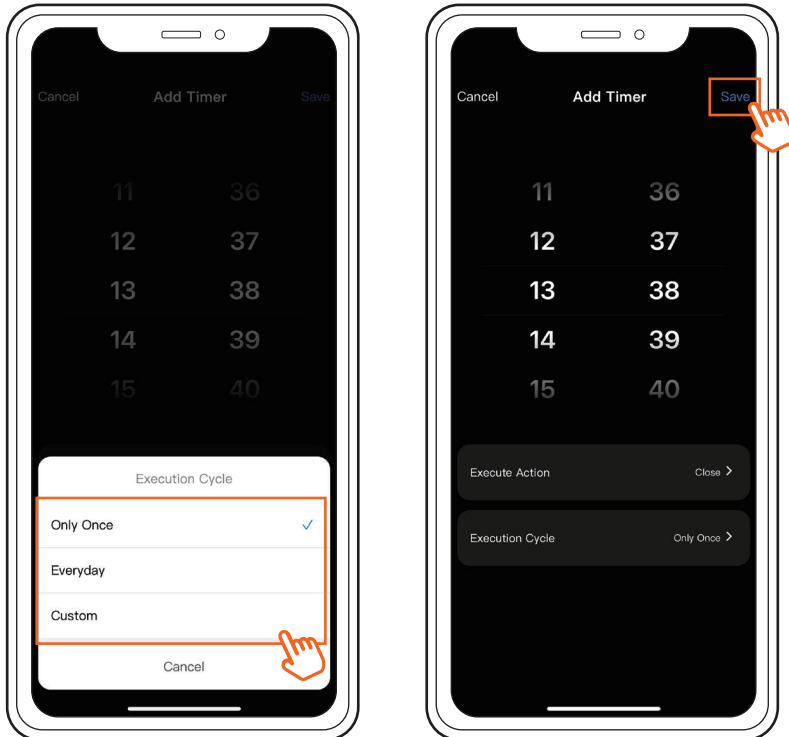
## 9 More Functions — Plan(Timed On/Off)



## 9 More Functions — Plan(Timed On/Off)



## 9 More Functions — Plan(Timed On/Off)





# CUSTOMER SERVICE

---



## 3-Year Warranty

We guarantee your product is free from defects in product material and workmanship for three (3) years starting from the date of purchase during normal use of household conditions. If your appliance fails to operate properly within our warranty period, we will arrange a new replacement free of charge and cover all the shipping costs.



## Quick Response within 12 Hours

If you are still unable to resolve the issue you are experiencing, please contact us immediately at our support email. It doesn't matter if the product has been installed, our customer support team will respond within 12 hours and assist you quickly and efficiently. The most efficient way to confirm your problem to us is to attach a video illustrating your product issue.

### Warning:

Changes or modifications to this unit not expressly approved by the party responsible for compliance could void the user's authority to operate the equipment.

### NOTE:

This device complies with part 15 of the FCC Rules. Operation is subject to the following two conditions: (1) This device may not cause harmful interference, and (2) this device must accept any interference received, including interference that may cause undesired operation.

### FCC Statement:

This equipment has been tested and found to comply with the limits for a Class B digital device, pursuant to part 15 of the FCC Rules. These limits are designed to provide reasonable protection against harmful interference in a residential installation. This equipment generates, uses and can radiate radio frequency energy and, if not installed and used in accordance with the instructions, may cause harmful interference to radio communications. However, there is no guarantee that interference will not occur in a particular installation. If this equipment does cause harmful interference to radio or television reception, which can be determined by turning the equipment off and on, the user is encouraged to try to correct the interference by one or more of the following measures:

- Reorient or relocate the receiving antenna.
- Increase the separation between the equipment and receiver.
- Connect the equipment into an outlet on a circuit different from that to which the receiver is connected.
- Consult the dealer or an experienced radio/TV technician for help.

The equipment complies with FCC Radiation exposure limit set forth for uncontrolled environment. This equipment should be installed and operated with minimum distance 20cm between the radiator and your body.



MADE IN CHINA