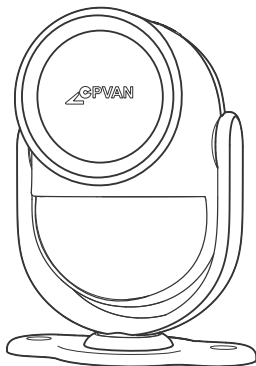
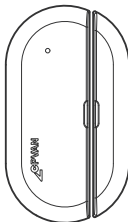




WiFi PIR Motion Sensor Alarm

Compatible with our CPVAN Home Alarm Sensors



Introduction

Appreciation for purchasing CPVAN WIFI PIR Motion Sensor Alarm. This updated WiFi PIR infrared motion sensor alarm system is intended to detect when people enter your shop or your home. Depending on your need, it will sound a loud siren alarm or a friendly chime and also send the notification to your mobile device (smart phone/tablet).

There are 3 ways to control this updated WiFi PIR infrared motion sensor alarm system:

1. Operated directly on the hub via the buttons;
2. Operated via CPVAN remote control;
3. Operated on your mobile device.

If required, you can add more remote controls and door/window sensors, etc to this CPVAN Home Alarm System. It also allows your team- or family members to arm or disarm the PIR motion sensor alarm as well.

Note: If you want to add other components like the water sensor, temperature sensor, or the PIR sensor&etc.They're compatible when the accessories are from CPVAN. For more details, please refer to the CPVAN website (www.cpvans.com) and inquire the service team well.

Box Contents

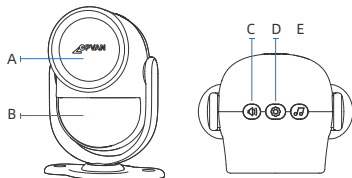
1 x WIFI PIR Motion Sensor Alarm
1 x AC adapter and cable (2m)
1 x Flexible Mount Holder
1 x Pair of Screws
1 x Instructions
3 x 1.5V AA Alkaline Batteries
Remote Controls (Quantity depends on the set)
Door/Window Sensors (Quantity depends on the set)
3M Stickers for Door/Window Sensors (Quantity depends on the set)

Note: When the batteries are running empty the detector light will flash once every 40 seconds and a beeping sound will be heard

Product Overview

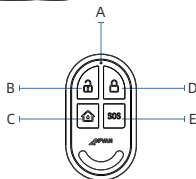
WIFI PIR Motion Sensor Alarm

- A. Siren
- B. Detection window
- C. Volume button
- D. Mode button
- E. Ring type button



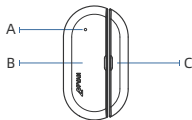
Remote Control

- A. LED Indicator
- B. Disarm Button
- C. Home Button
- D. Arm Button
- E. SOS Button



Door/Window Sensor

- A. Indicator
- B. Sensor
- C. Magnet



Product Specifications

The Hub - WIFI PIR Motion Sensor Alarm

Power Supply: External Type-C cable (included) DC 5V

Backup Power: 3 x 1.5V AA Alkaline Batteries

Standby Current: <30mA

Operating Current: <100mA

Shutdown Current: <100uA

Infrared Detection Range: <8 meters

Alarm Volume: 120dB

Detection Angle: 110 degrees

Use of Humidity: <90%

The Remotes

Power Supply: DC 3V(CR2032)

Standby Current: <5uA

Transmitting Distance: <80m

Operation Temperature: -10~55°C

The Door/Window Sensors

Power Supply: 12V 23A

Standby Current: <8uA

Transmitting Distance: <80m

Operation Temperature: -10~55°C

Preparation

1. Make sure the network is Wi-Fi
2. Download the APP Smart Life or Tuya Smart (They're with same function) Scan the QR code below or search "smart life" or "tuya smart" in Google Play or Apple Store to download



Smart Life



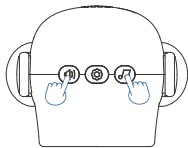
Tuya

3. Create an account in Smart Life/ Tuya Smart
 - a. Select the registration country
 - b. Enter an e-mail address to receive verification code
 - c. Enter verification code
 - d. Create your unique password(No more than 20 characters)

Add Your Hub

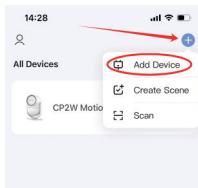
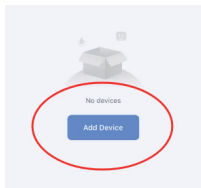
1. Make sure the wifi network is connected

2. Power on via the included Type-C cable or inserting 3 AA batteries, then the device will turn on automatically (You will hear 2 beeps.).
Note: Those 3 AA batteries are backup power. It can last about 8 hours. So you'd better to use Type-C cable.
3. Long press these 2 buttons as below at the same time, then you will hear 3 beeps and see the red light blinking quickly which means the device in pairing mode.

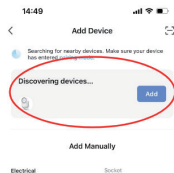


Note: Long press these 2 buttons again to delete the hub from the APP (No notification on your phone anymore). This won't disconnect the hub and the accessories.

4. Open Smart Life or Tuya Smart.
You will have 2 options to add device:
- a. Directly click Add Device button on the middle of the screen.
 - b. Click “+” button on the top of the right, then click Add Device button



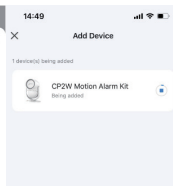
5. You can follow the instructions on the page to add the hub and change the name.



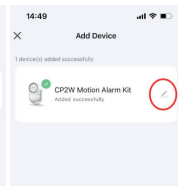
(1)



(2)



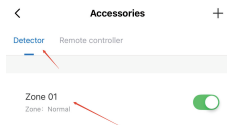
(3)



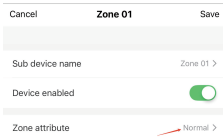
(4)

6. Set the hub

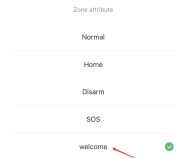
a. Disarmed: Deactivate the Alarm, used as doorbell



(1)

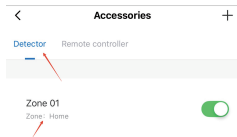


(2)

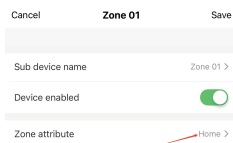


(3)

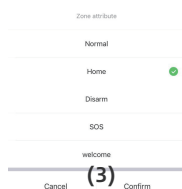
- b.Away: Activate the Alarm, accessories in all modes will trigger alarm
- c.Home: Accessories set to Home mode can temporarily stop detecting (Set the door sensor at home status), suitable for someone at home



(1)



(2)



(3)

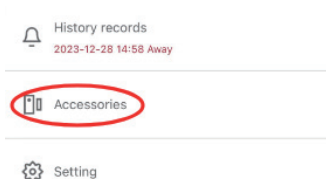
d.SOS: Once click,it will alarm immediately

7. Add Accessories

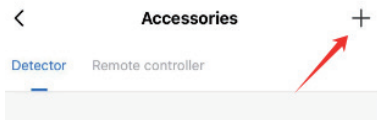
a.Click Accessories button

b.Detector for door/window sensor: Click “+” button on the top of the right and separate the door sensor till you see the red light on

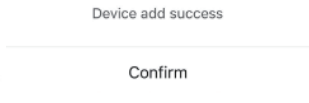
c.Remote controller: Click “+” button on the top of the right and press any button on the remote



(1)

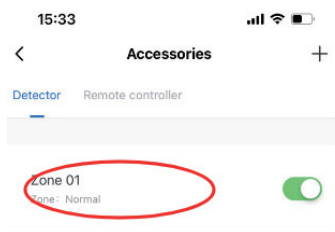


(2)

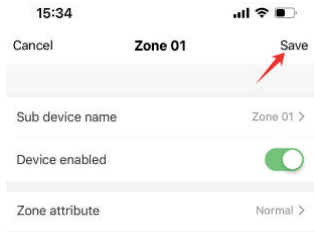


(3)

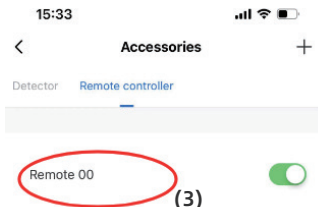
8. Edit the accessories: Click the accessory name to edit



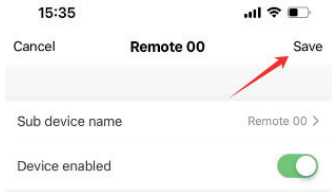
(1)



(2)

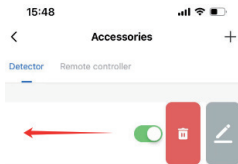


(3)

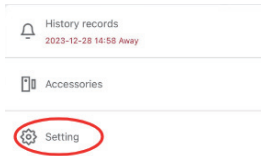


(4)

Note: If you want to delete the accessories, slide accessories to the left and you will see delete option.



9.Edit the Setting



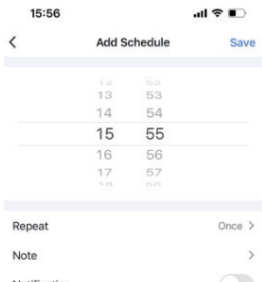
a.Delay set: 0-300s (It will start detecting from the time you set.)

b.Timer: Set the time to Disarmed/ Away/Home/SOS (No more than 4 schedules)

c.Infrared detection window: Turn on/off the motion detection window on the hub

d.Alarm volume: Mute - vol_4 (If you change it to Mute,it will only flash blue light but no sound when alarm triggered)

e.Alarm light: If you change it to off,it will



alarm without blue light flashing.

f.Alarm time: 1-256s

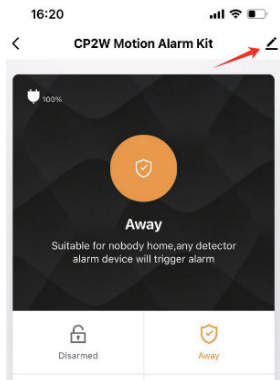
g.Alarm ring type: 5 types

h.Door/Window Open Alert: Pop-up alerts when arming without closing doors and windows

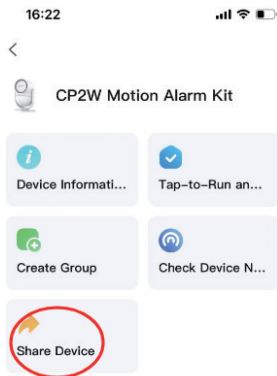
i.Alarm message propel(If you didn't turn it on,you won't get any message notifications)

j.Alarm sound delay: 0-300s

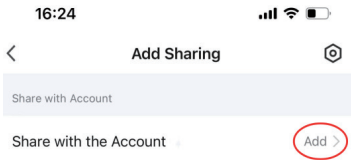
Note: You can share with family members to control the hub together on the APP



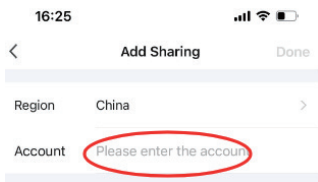
(1)



(2)

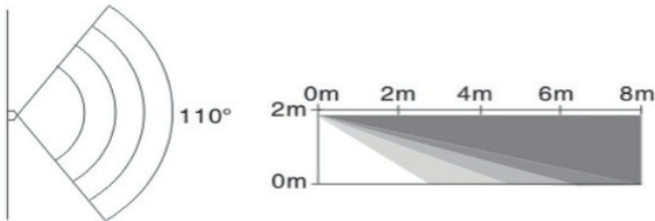


(3)



(4)

IMPORTANT: The Infrared detector is sensitive to a human's vertical movement, and less sensitive to horizontal movements, so it's best to aim the device at a 90 degrees' angle to a person's walking direction. The PIR motion sensor alarm detects signals at a distance up to 8 meters.




Attention:

This CPVAN updated WiFi PIR infrared motion sensor alarm system can work well without WIFI, but you can't get message notifications on your phone.

If no WiFi

1. Power on via the included Type-C cable, then the device will turn on automatically (You will hear 2 beeps.)

2. Pair the remotes (up to 10 remotes):

a. Long press [], you will hear lasting beep and the red light remains on;

b. Randomly press a button on the remote control, you will hear 2 beeps from the hub and the red light remains on. (This means you pair them successfully.) Repeat step b on the rest remotes to add more remotes;

c. Randomly press a button on the hub to turn off the red light;


d. Manipulate the remotes to see if they work.

3. Delete the remotes:

a. Long press [] and see the red light on;

b. Then long press [] again and you will hear 5 beeps.

4. Pair the door/window sensors (up to 24 sensors):


a. Long press [], you will hear lasting beep and the red light remains on;


b. Separate the door/window sensor, you will hear 2 beeps from the hub;

c. Randomly press a button on the hub to turn off the red light;

d. Separate the door/window sensor to check if it works.

5. Delete the door/window sensors:

a. Long press [] and see the red light on;

b. Then long press [] again and you will hear 5 beeps.

6. Set the hub


Press [] on the hub to set the hub to Arm/Home/Disarm mode.

a.Arm: You will hear 1 beep


b.Home: You will hear 3 beeps

c.Disarm: You will hear 2 beeps


7. Set the ring type


Press [] to choose the ring alarm you like(5 types)

8. Set the volume

Press [] to choose the volume you like(When it's max,you will hear 2 beeps)

9. Turn on/off the hub

a.Turn on: Long press [] ,you will hear 1 beep and see red and blue light flash

b.Turn off: Long press [] ,you will hear 1 beep and see red light flash

Note:

1. In pairing mode, press any button on the hub or no actions in 20s,the pairing is ending.

2. If you connect the hub with App,when it triggers alarm,the blue light will flash.

3. If you don't connect the hub with App,when it triggers alarm,the red light will flash.

4.The hub with detection window,so once it detects motion,it will trigger alarm.

5. Install the hub at the places where the pets won't walk by frequently at the night.
6. If hear 3 beeps when you add the accessories, this means the hub is full not to add more.

After-sales Service

Thank you again for your support to CPVAN. We have after-sales service team for 24 hours.

If you meet problems about our product, please feel free to contact us with order number, detailed description about your question with pictures or videos.

US: support@cpvans.com

UK: info@cpvans.com

EU: support2@cpvans.com

FCC Caution.

This device complies with part 15 of the FCC Rules. Operation is subject to the following two conditions:

- (1) This device may not cause harmful interference, and
- (2) this device must accept any interference received, including interference that may cause undesired operation.

Any Changes or modifications not expressly approved by the party responsible for compliance could void the user's authority to operate the equipment.

Note: This equipment has been tested and found to comply with the limits for a Class B digital device, pursuant to part 15 of the FCC Rules. These limits are designed to provide reasonable protection against harmful interference in a residential installation. This equipment generates uses and can radiate radio frequency energy and, if not installed and used in accordance with the instructions, may cause harmful interference to radio communications. However, there is no guarantee that interference will not occur in a particular installation. If this equipment does cause harmful interference to radio or television reception, which can be determined by turning the equipment off and on, the user is encouraged to try to correct the interference by one or more of the following measures:

- Reorient or relocate the receiving antenna.
- Increase the separation between the equipment and receiver.
- Connect the equipment into an outlet on a circuit different from that to which the receiver is connected.
- Consult the dealer or an experienced radio/TV technician for help.

FCC Radiation Exposure Statement:

This equipment complies with FCC radiation exposure limits set forth for an uncontrolled environment. This equipment should be installed and operated with minimum distance 20 cm between the radiator & your body.