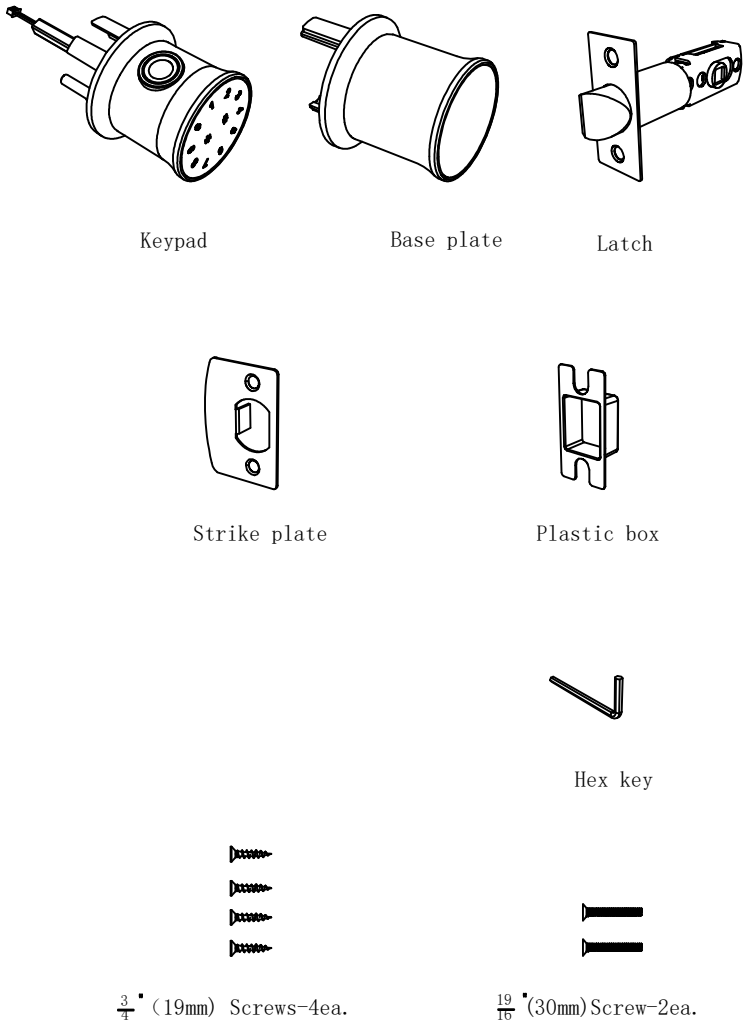


INSTRUCTION FOR ELECTRONIC DOOR LOCK(Applicable Model: E030fingerprint)

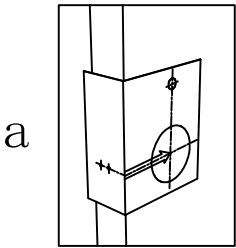
This manual is applicable to multiple models , The physical appearance may not be in accordance with the manual, but the operation is the same , it will not affect use

I :Package Contents

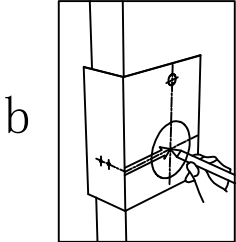


II:Installation and commissioning

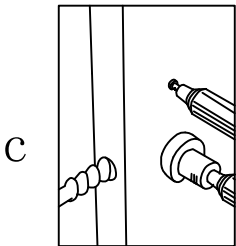
1,Punching in the door according to the dimension requirement.



a,Backset is distance from door edge to centre of hole on door face,adjust Latch fit both backset of 2 $\frac{3}{4}$ " (70mm) or 2 $\frac{3}{8}$ " (60mm)

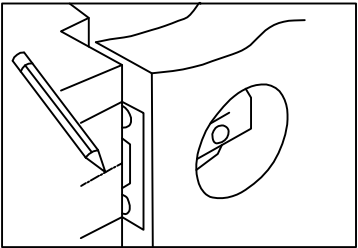


b,Select the height and backset as desired on the door face,use the Template as an indication to mark the centre of the circle on the door face and the centre of the door edge.

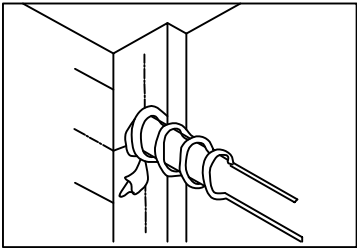


c,Use the marks as a guide to drill a hole $\phi 2 \frac{1}{8}$ " (54mm) through the door face for the lockset, then a hole of $\phi 1$ " (25.4mm) for Latch.

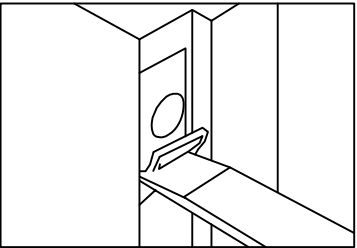
2, Install Strike



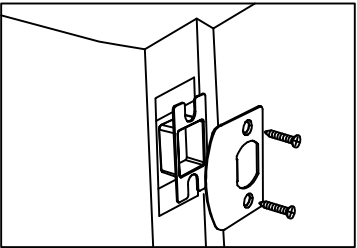
a



b



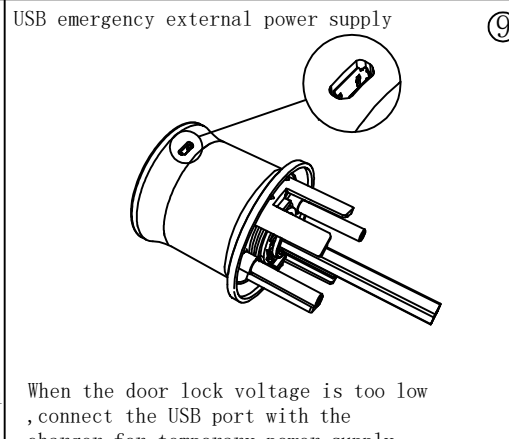
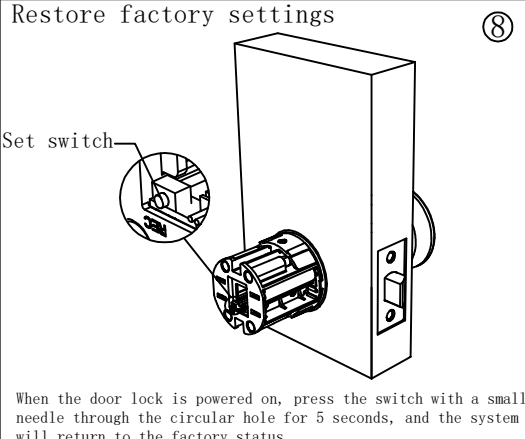
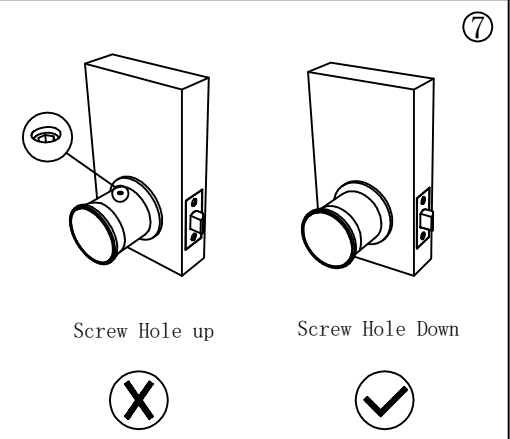
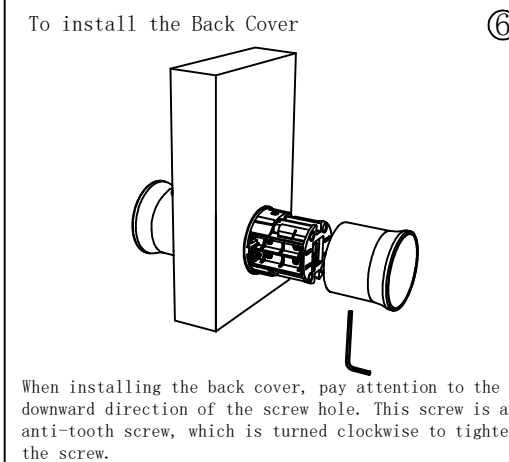
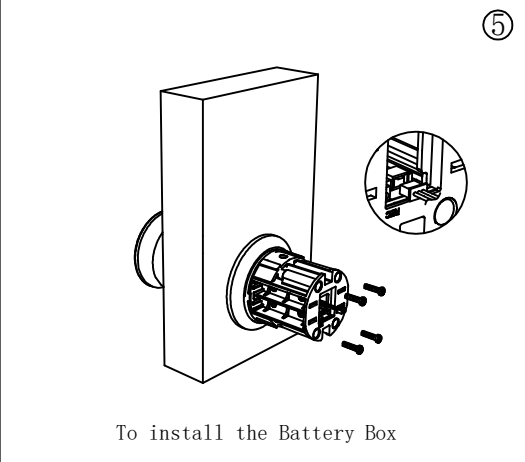
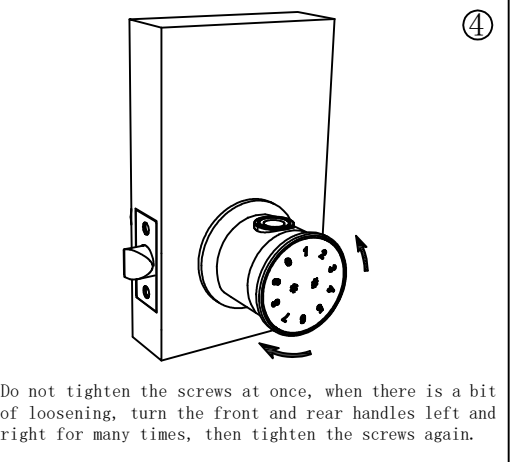
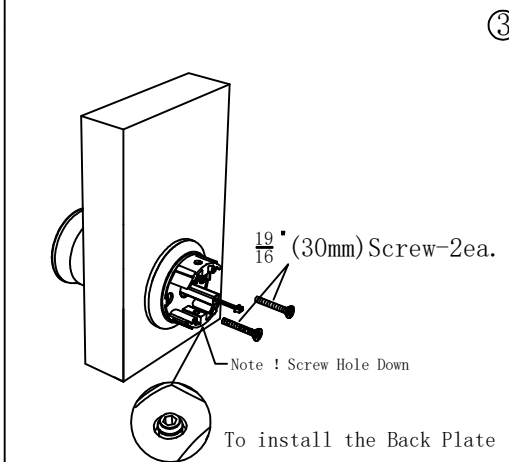
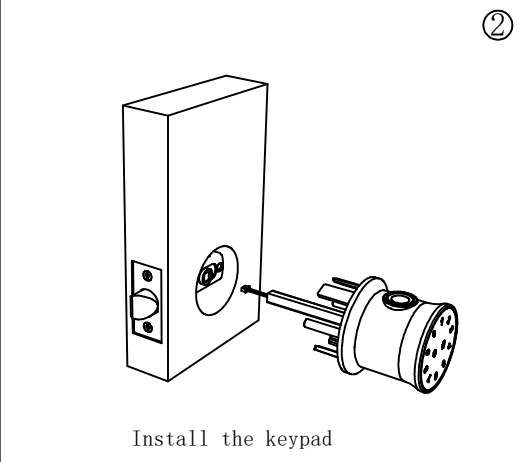
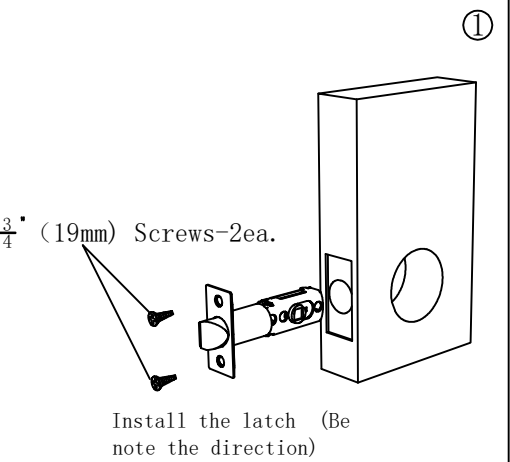
c



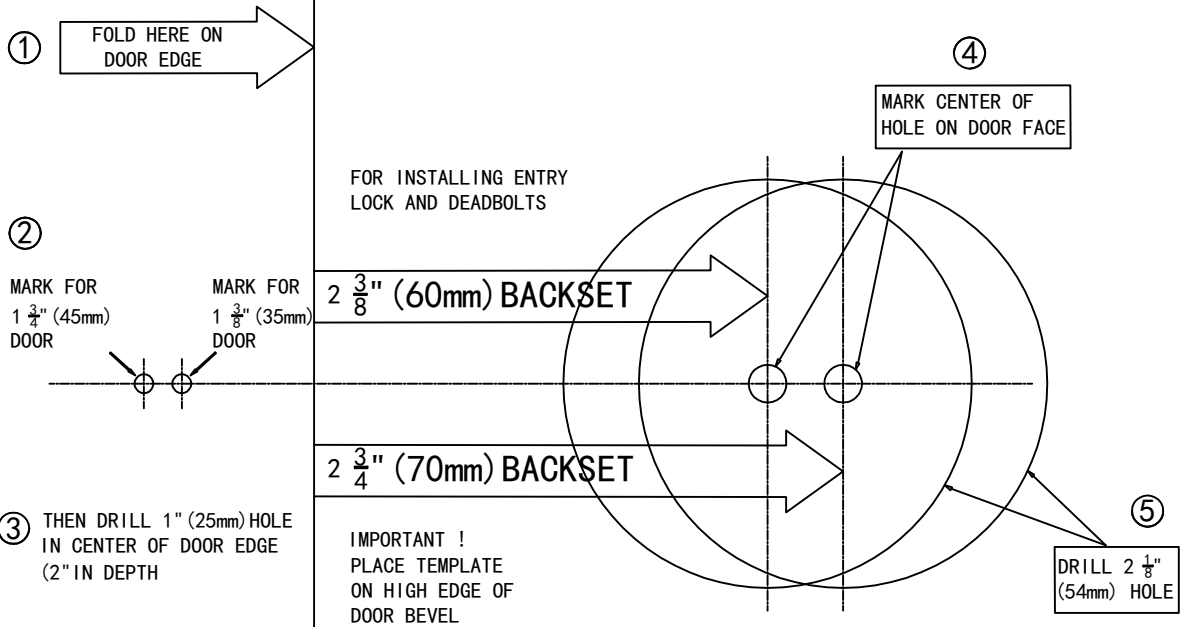
d

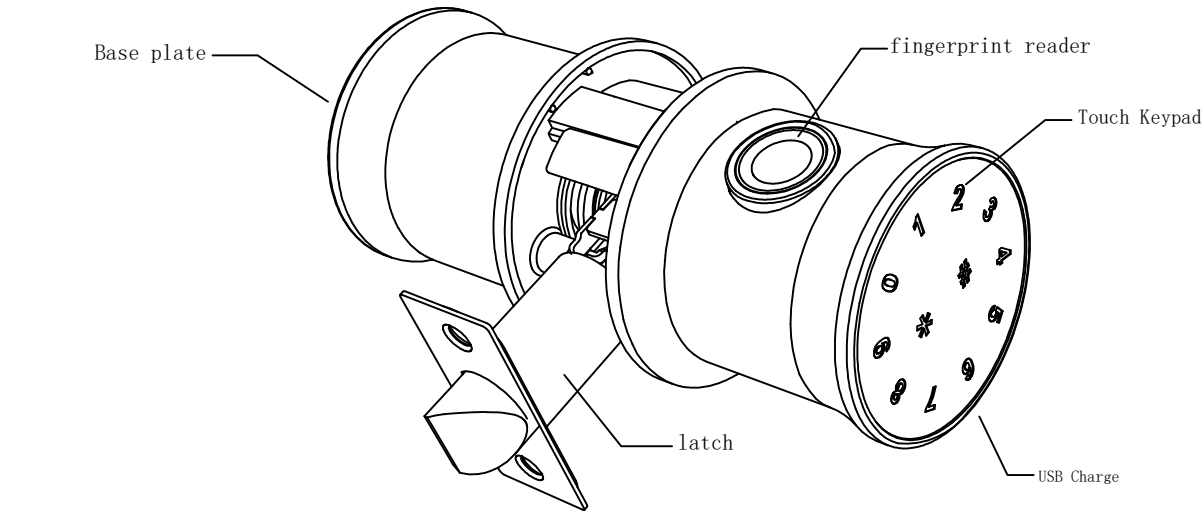
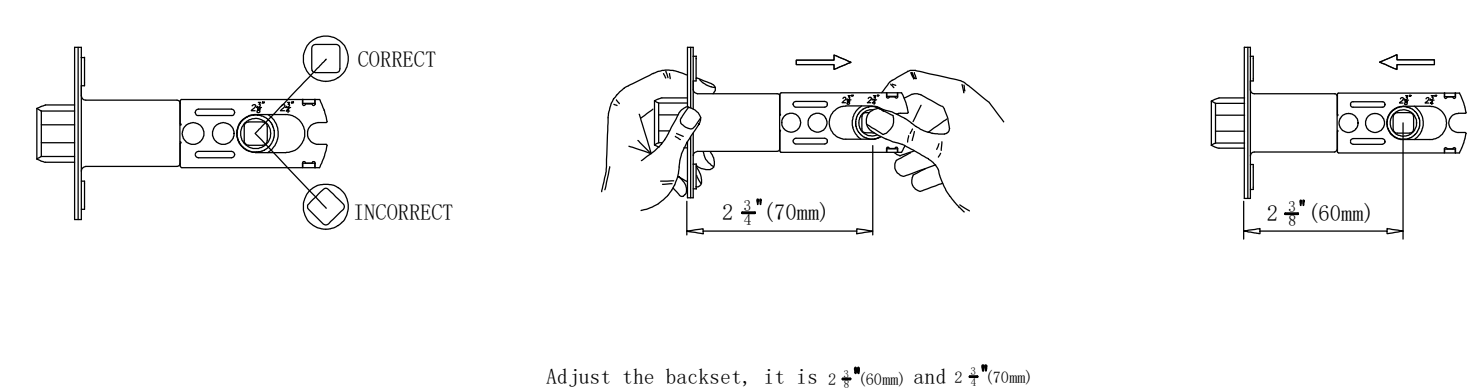
Close door and mark horizontal centre of Latch on to door frame.Mark vertical line where door edge meets frame and measure in half of door thickness to find vertical centre.
Extend both lines until they intersect and drill a 1" (25.4mm) hole to $\frac{1}{2}$ " (15mm) depth.
Position Strike plate and mark around edge.
Chisel fram to approx $\frac{1}{16}$ " (1.6mm) depth or until Strike sits flush.
Using two wood screws fix Strike to the frame.

3, Installation step



TEMPLATE





III:Operation instructions

- 1,Feature:
- a,Password length 6-12 bits;
 - b, the factory status code 123456# can open the door
 - c,Password anti peeping function: you can add some irrelevant codes before and after the password, and then press # confirm (the maximum length is 15 digits). you can enter the password as follows: XXX password XXX #
 - d,Low voltage prompt function: touch and light the panel when the battery voltage is lower than 4.8V, and the backlight on the screen flashes quickly 1 second. password is unlocked, the backlight on the screen will flash quickly for 1 second, and then unlock again
 - e, When using APP to operate the door lock, most of the function operations need to be operated beside the door lock .
 - f, The registered user for password, fingerprint on the door lock need to use the upload function in the app to see and edit them in the app
 - g,Password input error protection function: the system will lock the password keyboard when the unlock password is input wrong 5 times in a row, and automatically unlock it after 5 minutes. During locking, app can unlock the keyboard.
- 2, Restore factory settings
- a,Press and hold the reset button for a long time, and two "drops" will be heard. The lock will be restored to the factory settings. After the system is cleared, all the passwords added before and the phone administrator will be invalid
 - b,When app is added to the lock, you can delete the administrat of this lock in APP (click Settings - click delete). Note: after deleting the administrator on the app, the lock will be restored to the factory settings, and all previously added passwords and mobile administrator will be invalid;
- 3, Add administrator password (administrator can only be password, fingerprint and card cannot be added as administrator)
- a,When the lock is in the factory state and the app is not registered:
[*12#]→[123456]→[#]→[new administrator password]→[#]→[new administrator password again]→[#]→[✓]
 - b,After the lock is restored to the factory settings, the system will automatically generate an administrator password after the mobile app adds the lock, which can be revised in the app
- 4, Add user fingerprint, password (Can be added continuously),users who are not added through the app need to use the upload function in the app to display)
- a,[*85#]→[administrator password]→[#]→[new user password]→[#]→[new user password again]→[#]→[✓]
[*85#]→[administrator password]→[#]→[Press your finger four times]→[✓]
[*85#]→[administrator password]→[#]→[Put the card on the card reading arean]→[✓]
 - b,If the lock is registered in the app, just Add fingerprint, password in the app
- 5,Change administrator password
- a,[*12#]→[Old administrator password]→[#]→[new administrator password]→[#]→[new administrator password again]→[#]→[✓]
 - b,On the app, select this lock name -> Settings -> administrator unlock password -> enter the new administrator password.

- 6,Change the user password (users not added through the app need to use the upload function in the app to display in the app)
- a,[*10#]→[old user password]→[#]→[new user password]→[#]→[new user password again]→[#]→[✓]
 - b,When the lock is registered in the app, click the password management to open the password to be modified and directly modify it
- 7, Delete (the door lock operation cannot delete a single user alone, and the app can delete a single user)
- a,Delete all passwords (except administrator)::[*71#]→[administrator password]→[#]→[✓]
 - b,Delete all fingerprints:[*70#]→[administrator password]→[#]→[✓]
 - c,Add an app to delete a single user in the app
- 8, Add App for Digital Lock
- a, Factory State :When the screen light is off ,User touch the Keypad to wake the Lock and add Bluetooth Administrator before Long Sound "DI".
 - b,Adding New Administrator:Although the lock has set an Administrator password or added an APP ,allow other App user to add this lock and become the new administrator.Let the lock enter the mode where you can add the phone Administrator.
[*83#]→[administrator password]→[#]→[✓]

IV: Note !

- 1, Although the door lock is treated with simple waterproof treatment, it cannot be installed outdoors that can get wet, so as to avoid damage caused by water entering into the line
- 2, The door lock does not have fire protection function and is not suitable to be installed on the fire door
- 3, Do not use inferior batteries to avoid battery leakage damaging the power supply system
- 4, Please pay attention to the positive and negative poles of the battery when installing the battery
- 5, Do not use sharp hard objects to scratch the surface of the touch key screen
- 6, Do not wipe the lock surface with corrosive liquid to avoid damaging the electroplated layer
- 7, If the administrator password is forgotten, the lock can be reset to the factory status
- 8, After the door lock has been used for a long time, in order to ensure the flexibility of handle rotation, please remove the door lock and add lubricating oil to the rotating part inside the handle

V: Common problem

- 1, No electricity
 - a,Check whether the connectors of the connecting wires of the front and rear plates are connected properly
 - b,Is the battery installed? Is the battery installed reversely
- 2, The lock can't be opened:
 - a,Whether the password is correct, and whether the card or password or fingerprint has been deleted
 - b,The door shall be opened within 5 seconds after entering the password and other door opening modes. If the door is not opened, it will return to the free state
 - c,Touch the screen to see whether the screen can activate the light
- 3, Fast power consumption
 - Check whether the battery is of poor quality. Normally, the battery can be used about one year

VI: Specification parameter

Power supply	4.5V-6.5V (4 AA battery)	fingerprint quantity	100	working temperature	-20° C-70°C	Unlocking method	fingerprint, Password , APP
Quiescent current	Less than 40 UA	Password quantity	150	relative humidity	20%-93%	APP	带
Dynamic current	Less than 250mA			Doorthickness	33mm-52mm		



download the APP

FCC Statement

This equipment has been tested and found to comply with the limits for a Class B digital device, pursuant to part 15 of the FCC Rules. These limits are designed to provide reasonable protection against harmful interference in a residential installation. This equipment generates, uses and can radiate radio frequency energy and, if not installed and used in accordance with the instructions, may cause harmful interference to radio communications. However, there is no guarantee that interference will not occur in a particular installation. If this equipment does cause harmful interference to radio or television reception, which can be determined by turning the equipment off and on, the user is encouraged to try to correct the interference by one or more of the following measures:

- Reorient or relocate the receiving antenna.
- Increase the separation between the equipment and receiver.
- Connect the equipment into an outlet on a circuit different from that to which the receiver is connected.
- Consult the dealer or an experienced radio/TV technician for help.

Caution: Any changes or modifications to this device not explicitly approved by manufacturer could void your authority to operate this equipment.

This device complies with part 15 of the FCC Rules. Operation is subject to the following two conditions: (1) This device may not cause harmful interference, and (2) this device must accept any interference received, including interference that may cause undesired operation.

RF Exposure Information

The device has been evaluated to meet general RF exposure requirement. The device can be used in portable exposure condition without restriction.