



V10

Audio Console



Professional Live Sound Card for Streamer

Live Sound Card Operation Manual

Product Model: V10

Catalog

1. Product Overview.....	3
2. Product Appearance.....	3
3. Wiring & Panel Definition.....	4
4. Application.....	7
5. PC Setting.....	9
6. Connection.....	10
7. BT Connection.....	11
8. Technical Parameters.....	11
9. Common troubleshooting:.....	12
10. Accessories List.....	12
11. NOTE:.....	13

Thank you for using the live sound card products produced by our company. In order to make it easy for you to experience the product, we offer the detailed instructions for use, from which you can get information about the product introduction, usage method and other aspects. Before you start using this audio mixer, please read this manual carefully so that you can use it correctly. If there are any omissions, please forgive us, and welcome to you to contact us very much.

1. Product Overview

The V10 sound card is a professional recording and live streaming digital audio mixer, built-in high-performance digital DSP reverberation processing, supports high-definition digital recording, noise reduction, dual mobile phone live streaming, BT wireless accompaniment, real-time earphone monitoring. Provides a variety of microphone interface inputs, a variety of interesting voice changer, 12 professional electronic tone tone, popular live streaming atmosphere sound effects. Very suitable for professional livestream studios, podcast studios, personal live streaming, recording, chatting, singing...

tenlamp V10 is a comprehensive solution for audio processing that integrates audio input collecting, processing & optimizing and output controlling. Recording professional, realistic and interesting sound quality; It is compatible with smartphones, tablets and computers, including Android, iOS, Window and macOS, Linux . It is plug-and-play with no extra driver required.

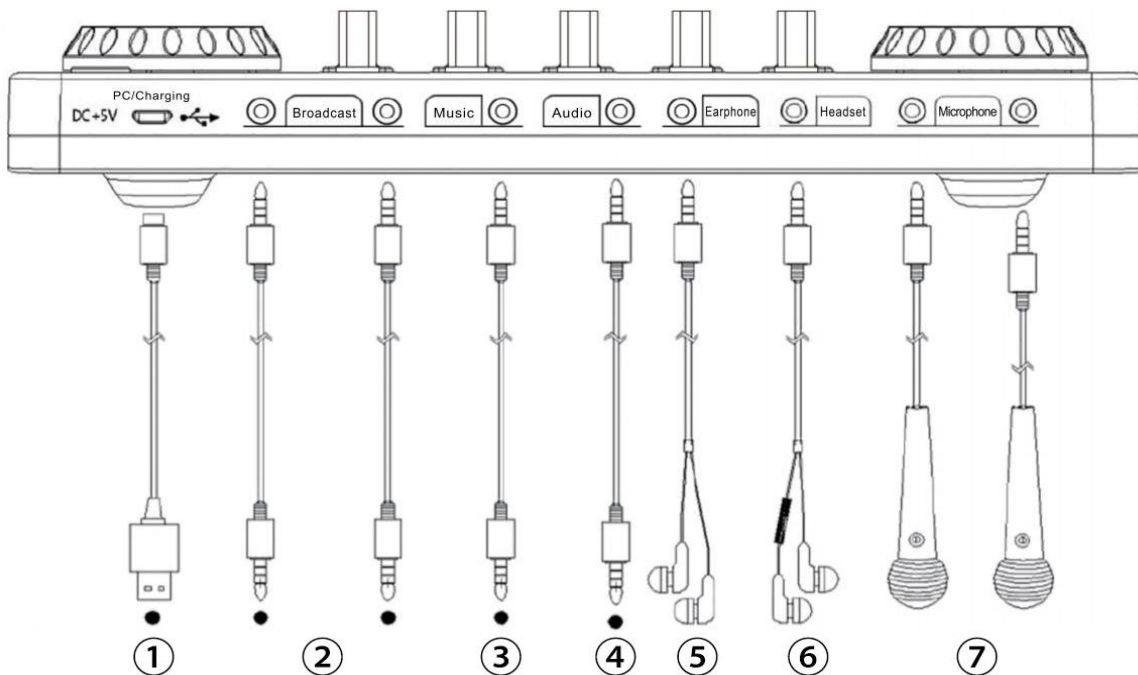
The built-in DSP digital audio processor can help tune your sound in real-time and enrich your sound line, makes it possible to change your voice and add more funny sound effects to your podcast or streaming, which will make your live streaming more entertaining.

2. Product Appearance



3. V10 Wiring & Panel Definition

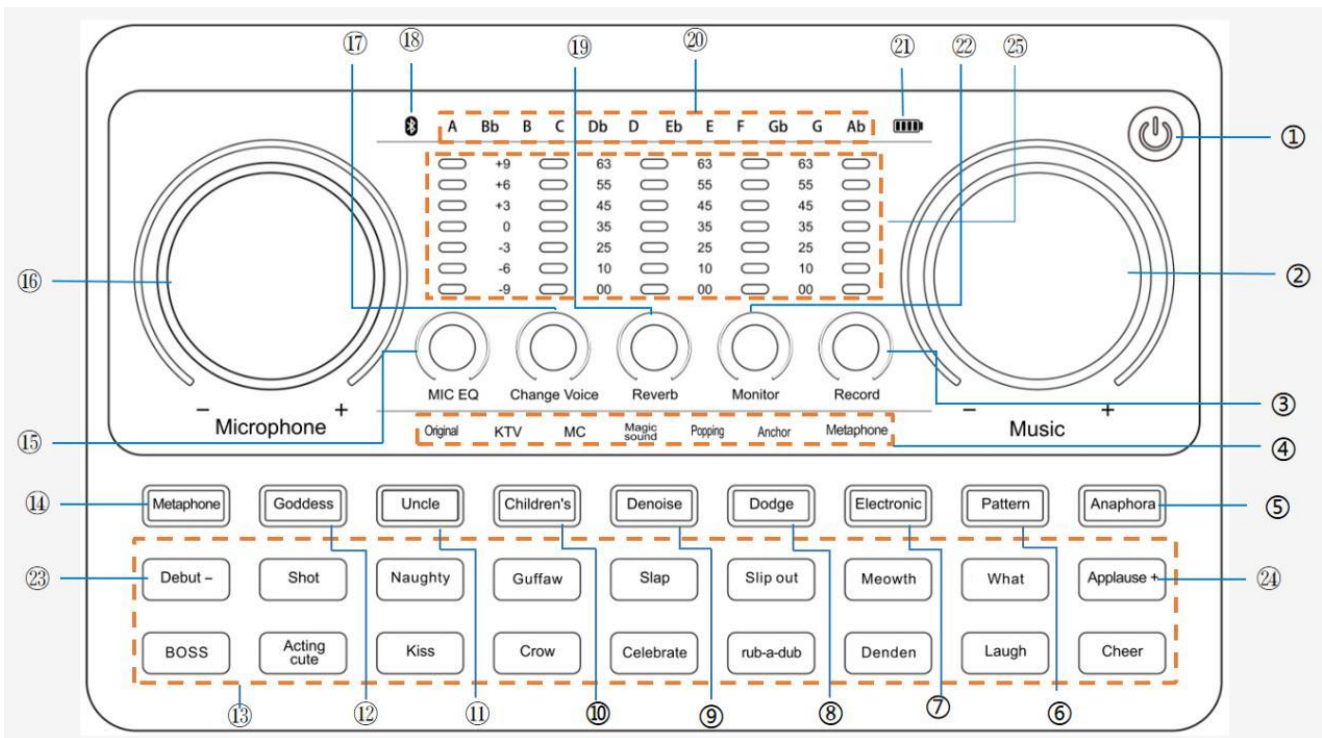
3.1 V10 Live Sound Card Wiring Diagram



- ① **PC/Charging:** DC+5v input; OTG port; Used for data transmission; Also used as a computer live streaming interface and computer accompaniment interface; The V10 serves as an external audio console for the computer, laptop, smartphone and tablet while live streaming, recording or singing on the computer.
- ② **Broadcast:** The processed sound can be output to the smartphone, tablet PC or other devices with a 3.5mm TRRS cable. Can live stream to multiple platforms at the same time. Can be connected to the **desktop computer microphone jack or laptop 3.5mm audio jack** when using PC live streaming. If you use iPhone for live streaming, please use 3.5mm to lightning adapter(not included).
- ③ **Music:** Music accompaniment input port; Connect an external audio source or devices to the audio console via an 3.5mm TRRS audio cable, to play music during live streaming or audio production. When input music, it can be connected to the smartphone headphone jack, desktop computer earphone jack or laptop 3.5mm jack.
- ④ **Audio:** 3.5mm Output port; Connect audio playback device such as speakers or monitor headphones.
- ⑤ **Earphone:** 3.5mm output port; Monitor earphone jack, used to monitor all sound of audio console in real-time.
- ⑥ **Headset:** 3.5mm port; Used to sound input by a headphone with microphone function. ALSO used to monitor sound of audio console in real-time.
- ⑦ **Microphone:** 3.5mm port; Connect a 3.5 mm condenser microphone that does not require external power supply. 【48V microphone need a phantom power then use XLR to 3.5mm mic cable to connect the V10 audio console mic jack】

Tip: Please not using while charging.

3.2 V10 Live Sound Card Panel Definition



1. **Power Switch/Loopback:** Long press 2 seconds to turn on/off; When working, short press to turn on/off the **Loopback function**; 【Loopback function: When the "Loopback" Function is ON, the accompaniment or voice can be uploaded to the computer or network platform through the sound card, and audience not only can hear microphone sound but also hear sound from PC, or record the sound from the PC while recording on PC; when the "Loopback" function is OFF, the accompaniment or sound won't be loaded to the computer or net platform through sound card, the audience only hear the mic voice and can not hear the sound from your computer or laptop, or only record the microphone sound while using PC recording】
2. **Music knob:** Adjust the volume of the music input.
3. **Record knob:** Adjust the output volume(output to live streaming device or recording device).
4. **Mode light:** Lights up to show the current corresponding sound mode.
5. **Anaphora button:** When turned on, Eliminate 85% the singer's vocals in the accompaniment music.
6. **Pattern button:** Short press to cycle switch through the 6 sound scene modes: Original sound, KTV, MC, Magic sound, Popping, Anchor.
7. **Electronic button:** Short press to cycle switch the electronic music tone, long press to turn off the electronic tune, LCD corresponds to 12 kinds of electronic tone cycle display.
8. **Dodge button/status light:** Auto ducking the microphone input. When turning on this function in the live stream, the audio console will automatically lower the volume of the

background music, and highlight the voice of the human, suitable for live chat scenes.

- 9. Denoise button:** can automatically reduce the ambient sound from the microphone input. Press the button to turn this function on/off, corresponding button lights on and off.
- 10-12. 3 Voice Changer Buttons:** Children's, Uncle, Goddess; at the same time the buttons status lights are on.
- 13. Soundl effects buttons area:** 18 popular warm-up sound effects.
- 14. Metaphone button:** Short press to switch cyclically the **Radio sound mode**, **Telephone voice mode**, and **Robot sound mode**.
- 15. MIC EQ knob:** Adjust the treble effect of the microphone to the right, and adjust the bass effect of the microphone to the left.
- 16. Microphone knob:** Adjust the volume of the microphone input.
- 17. Changing Voice knob:** Fine-tune the effect of the current voice changer mode.
- 18. BT indicator light:** The indicator light is always on to indicate a successful Bluetooth connection. (BT function is only used for BT accompaniment)
- 19. Reverb knob:** Increase the reverberation effect to the right, and vice versa
- 20. Electronic music tone mode light:** 12 kinds of electronic tones.
- 21. Battery indicator light:** the green light flashes when the battery power is low, the red light on when charging, and the green light is always on after the battery power is full.
- 22. Monitor knob:** Audio/Earphone/headset monitor volume adjustment and speaker volume adjustment.
- 23. Decrease the volume of the special effect:** long press the "Debut" button to reduce the volume of the special effect, short press the "Debut" effect sound.
- 24. Increase the volume of special effects:** Long press the "applause" button to increase the volume of special effects, short press the "applause" special effects sound.
- 25. LED dynamic display light:** Respond to the corresponding knob parameter when adjusting, and when static, it is the overall volume bounce display.

Loopback function: It means that the digital signal directly returns to the inside of the software without going through the physical interface of the sound card. It can capture all the sound sources in the computer system, including the microphone input, web pages, and the sound in the music software, as the input sound source, and send it to the other party on the network. Or record it.

When live streaming on PC and interacting with other streamers in the live room:

Turn on loopback, can hear your accompaniment or other audio sources in the live room, and can hear the sound of your microphone, but it will cause the other streamer to be unable to speak;

Close the loopback, the problem(unable to speak) is solved, can still hear the sound of your microphone in the live streaming room, but cannot hear your accompaniment;

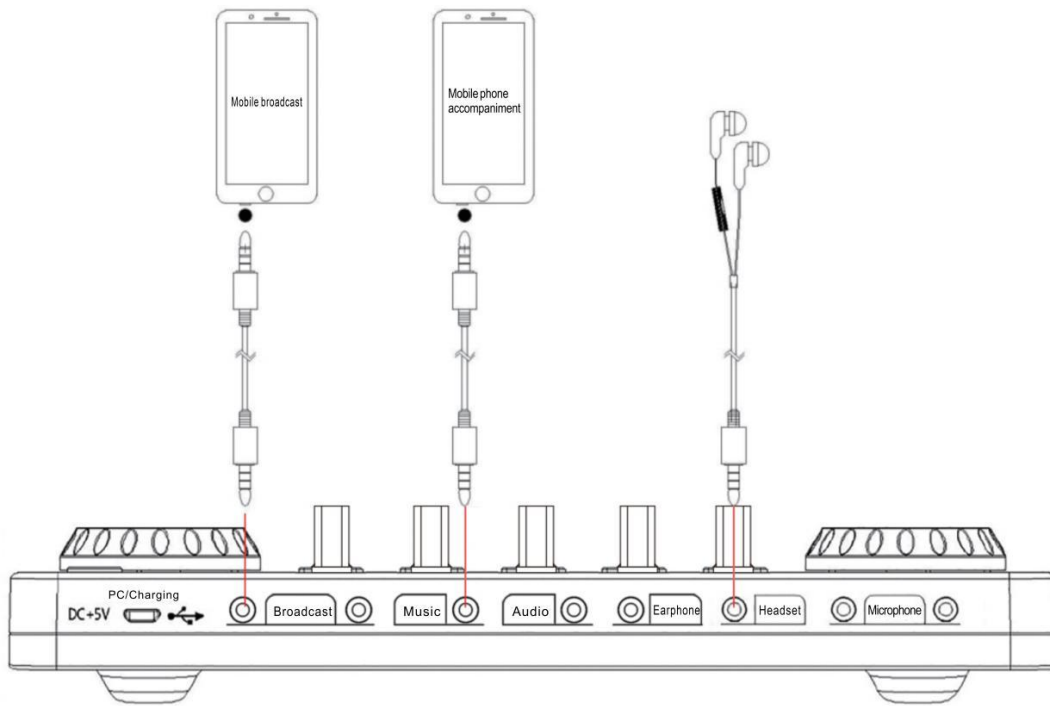
When recording, dubbing, recording songs on computer:

Open loopback, you can record the accompaniment from the computer, the sound of the web page, and the sound of the microphone together;

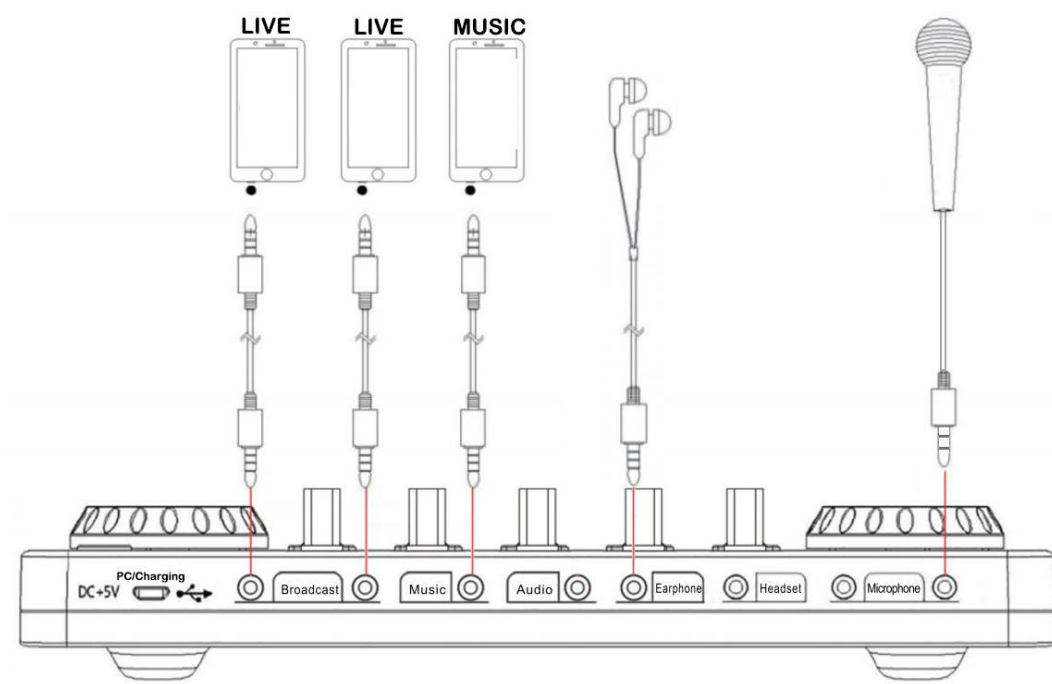
Turn off loopback, only the sound of your microphone can be recorded, but the sound from the computer can not be recorded.

4. Application

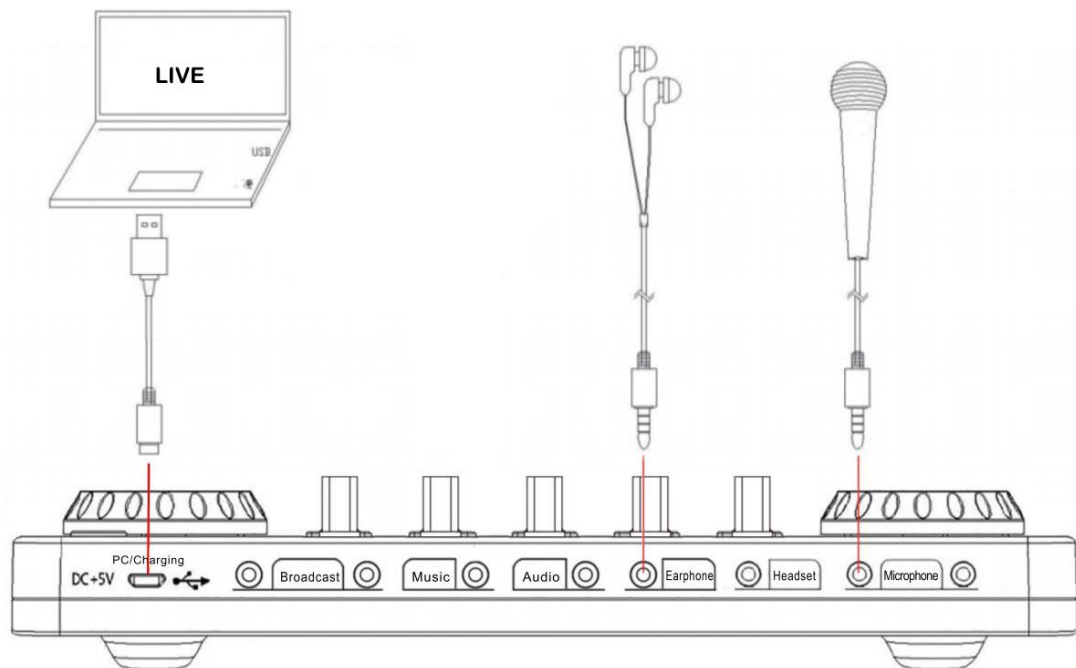
Phone1 Live Streaming + Phone2 Play Music+ Headset Input & Monitoring



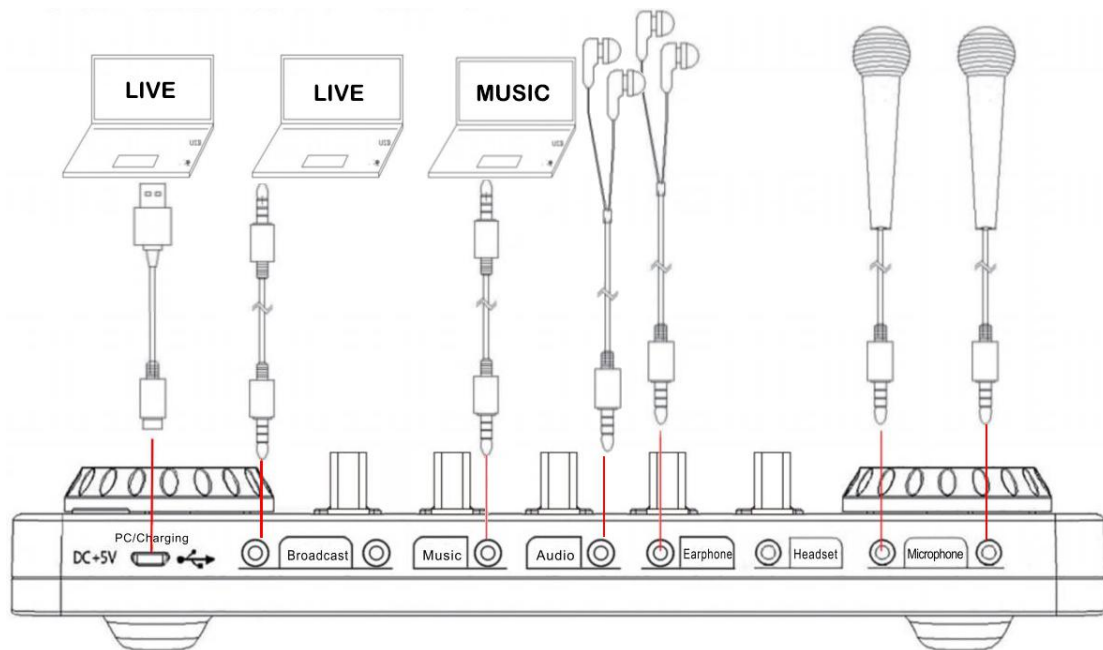
Phone1 Live Stream + Phone2 Live Stream + Phone3 Play Music + Mic Input + Headphone Monitoring



PC Live Stream & Play Music + Mic Input + Earphone Monitoring



PC1 Live Stream+ PC2 Live Stream + PC3/Phone Play Music + Two Mic Input + Two Headphone Monitoring



NOTE: During using PC live streaming or playing accompaniment with USB digital connection, you must turn on the "Loopback" function (short press the Power switch to turn on/off), Only in this way can the viewers hear the sound from your PC.

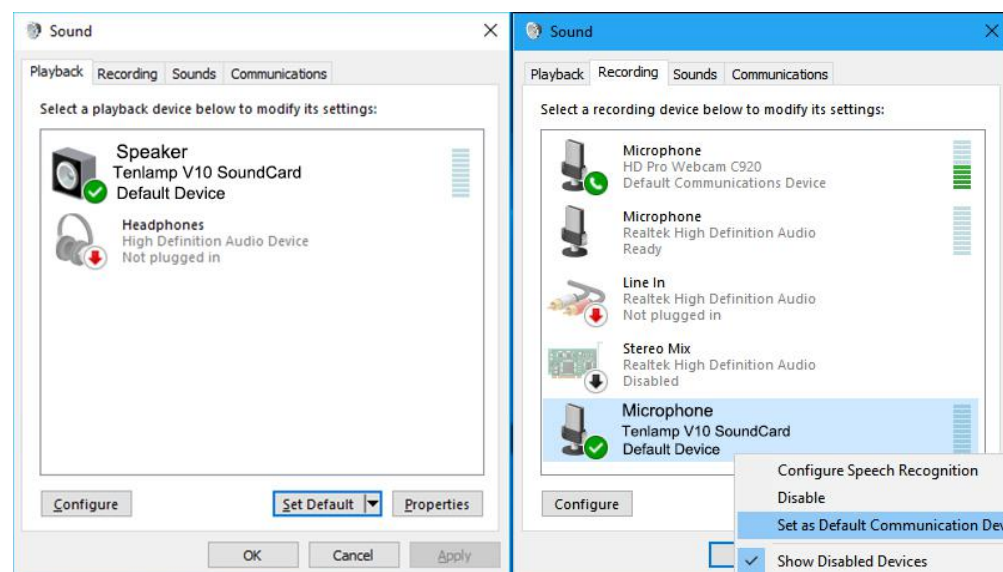
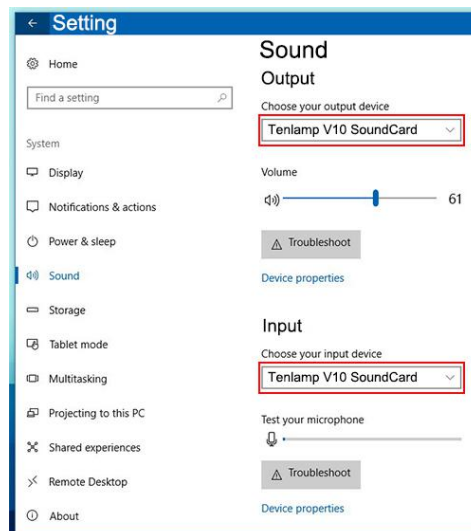
5.Computer or Laptop Live Stream Settings (USB connection)

The charging cable of the sound card is connected to the charging port of the audio console, and the other end is connected to the USB port on the computer host (recommended to connect to the black USB2.0 port). The laptop is also connected to the USB port. Turn on the audio console, the computer prompts that the device is plugged in and it is connected.

After connected, find the small speaker in the lower right corner of the computer screen, right-click---select the Open Sound Setting, if not, you can select playback device and the recording device. Then set both the input and output (or speaker on the playback page and the microphone on the recording page) to: **"Tenlamp V10 SoundCard" or "MV-AP82X"**. After setting, click Apply to confirm.

The software used by the computer also needs to be set, such as accompaniment software and live stream software. In the software-"Settings", set the audio input and output of "sound card", "audio output", "microphone", etc. to: **"Tenlamp V10 SoundCard" or "MV-AP82X"**, click Apply and confirm.

Warm Tip: Above setting is for USB digital connection when live streaming or playing musi on PC.



6.Connection While Live Streaming

6-1.Live Streaming on Smartphone:

① **Using the 3.5mm to 3.5mm audio cable:** One end insert into V10 sound card "Broadcast" jack, other end insert smartphone 3.5mm headphone jack (lightning or USB-C jack need adapter but not included).

② Can support live streaming up to two smartphones at the same time.

6-2. Live Streaming on Computer or Laptop:

① **Using the USB cable:** One end insert into V10 sound card "PC/Charging" jack, other end insert the USB jack of computer or laptop (The suggestion is to connect the black USB2.0 interface).

② **Using the 3.5mm to 3.5mm TRRS audio cable:** One end insert into V10 sound card "Broadcast" jack, other end insert into desktop computer "Microphone" jack or laptop 3.5mm audio jack.

③ Can support live streaming up to three PC at the same time.

6-3. Accompaniment Music Input:

① **Using smartphone playing accompaniment:** Using the 3.5mm to 3.5mm TRRS audio cable: one end insert into the V10 sound card "Music" jack, other end insert into the smartphone headphone jack(Lightning or USB-C jack need adapter but not included). Then using phone player or music software to play music.

② **Using smartphone BT:** BT ID: V10 Soundcard, then using phone player or music software to play music.

③ **Using PC palying accompaniment:**

(1) **First way:**

Using the micro USB charging cable: One end insert into V10 sound card "micro USB" charging jack, other end insert the USB jack of computer or laptop. then use the music software or website to play music. (set the audio output of "sound card", "audio output", "Speaker", etc. to: MV-AP82X or [Tenlamp V10 SoundCard](#)).

(2)**Second way:**


Using the 3.5mm TRRS audio cable: One end insert into V10 sound card "Music" jack, other end insert into computer or laptop "Earphone" jack. then use the music software or website to play music.

7. BT Paired Connection and Playback

For the first time, the sound card will automatically wait for BT to be searched after power on the unit. the effective range of received signals is less than **10 meters**. The ID number of this device is “**V10 SoundCard**” , Playing music on smartphones and transmitting it to the device via BT can be used as music accompaniment.

Tip: BT feature is only for accompaniment music playback.

8. Technical Parameters

1 Basic parameter			
Name		V10 Sound Card	
Size		L225*W140*H40mm	
Product weight		431g	
Environment		Temperature 0℃ ~ 45℃/0°F -113°F	
Battery		Lithium ion 1000mAh/3.7V (3.7Wh)	
Charging		DC+5V  , 1A MAX	
Frequency response		50Hz~18KHz	
Reverberation processing		32Bit RISC Digital reverberation processor	
Sampling rate		44.1KHz/16Bit	
BT version/Name		V5.0, Compatibility Bluetooth 4.2BR1 V10 SoundCard	
BT receive		<12 m (No obstacle)	
S/N Ratio		>102dB	
Out power		10mW Load 32Ω (Condenser mic)	
THD		<0.3% @1kHz (Live streaming)	
2 Interface parameters			
Headset interface	CN, US standard four-section 3.5mm plug	Microphone interface	Standard 3.5mm plug
Live interface	CN, US standard four-section 3.5mm plug	Accompaniment interface	Standard 3.5mm plug
Headphone jack	Standard 3.5mm plug	USB interface	5 feet Micro USB

9. Common troubleshooting:

1. Q: The device does not work, or there is no sound suddenly.

Answer: The battery is dead, please connect to USB to charge before use;

2.Q: There is a lot of noise during the live streaming.

Answer: a. Check whether the headset is inserted in place, and then plug in the headset again;

b. Whether the earphone is plugged into the corresponding identification position:

c. Appropriately reduce the microphone volume;

d. Check whether the battery is close to a dead state, please charge it in time;

e. If the PC is live streaming, and some laptops have interfering sound cards, try to unplug the computer's charging cable;

3.Q: The microphone has no sound.

Answer: a. Check the insertion position of the mic cable and make sure that the mic logo is face to you;

b. The mic sound is turned off to the minimum, then please monitor and increase gradually the voice volume of mic;

4.Q: The live streaming sound is small or silent.

Answer: a. Check whether the live cable connection is plugged into the live broadcast port;

b. Check whether the mobile phone is inserted in place;

c. Try to see if the mobile phone recording can be broadcast live again;

5. Q: The other party can't hear the sound when the computer is livestreaming, and it has no effect.

Answer: a. Check whether the USB live cable is plugged into the charging port, please use the configuration cable of this machine correctly;

b. Check whether the recording volume is turned on to the maximum;

c. Check whether the "Loopback" function is turned on.

6.Q: The sound is not normal.

Answer: a. This device has a variety of tone-shifting effects, please switch the sound effect to original sound mode;

b. The earphone is incorrectly inserted in the headset position, please unplug it and insert it to the earphone mark position.

10. Accessories List of V10 sound card

1* V10 Sound Card;

1 * V10 Mini remote control

3* 3.5mm to 3.5mm TRRS audio cable

1* USB data charging cable

11. NOTE:

- Please not use during while charging.
- Please charge the audio mixer before using for the first time.
- If not used for a long period, please charge the podcast console every 3 months.
- Charging is also possible when the power is off.
- Do not charge for a long time. Please stop charging when the battery is fully charged to avoid over -charging.
- BT connection is limited by distance. Please do not place the too far away from the audio console to avoid interference.
- BT feature is only for accompaniment music playback.
- During using PC live streaming or playing accompaniment, you must turn on the "Loopback" function, Only in this way can the viewers hear the sound from your PC.
- To avoid personal injury or property damage caused by high temperature, noise, radiation, fire, machinery and other factors, please use this product in a safe environment, and read carefully and observe the following:

- ① If you encounter product heat, smoke, odor, etc. during use, please turn off the power and cut the power in time, and send it to the seller for maintenance.
- ② Please do not modify, disassemble or repair this equipment by yourself to avoid invalidating the product warranty or causing personal injury. If necessary, please contact the customer service to deal with it.
- ③ This product should be used and stored in a dry, ventilated, and safe environment. Do not use this product in a humid, dusty environment.
- ④ Please avoid rain and dust entering the product to avoid short circuit. Close to the fire, collision and severe vibration will cause irreversible damage to the product damage.5. Please do not use this product in the occasions prohibited by law, and follow the relevant safety regulations to use this product to avoid any accidents.
- ⑤ This product cannot be used as a children's toy, please place it out of the reach of children.



FCC Statement

This equipment has been tested and found to comply with the limits for a Class B digital device, pursuant to Part 15 of the FCC Rules. These limits are designed to provide reasonable protection against harmful interference in a residential installation. This equipment generates uses and can radiate radio frequency energy and, if not installed and used in accordance with the instructions, may cause harmful interference to radio communications. However, there is no guarantee that interference will not occur in a particular installation. If this equipment does cause harmful interference to radio or television reception, which can be determined by turning the equipment off and on, the user is encouraged to try to correct the interference by one or more of the following measures:

- Reorient or relocate the receiving antenna.
- Increase the separation between the equipment and receiver.
- Connect the equipment into an outlet on a circuit different from that to which the receiver is connected.
- Consult the dealer or an experienced radio/TV technician for help.

This device complies with part 15 of the FCC Rules. Operation is subject to the following two conditions: (1) This device may not cause harmful interference, and (2) this device must accept any interference received, including interference that may cause undesired operation.

Changes or modifications not expressly approved by the party responsible for compliance could void the user's authority to operate the equipment.