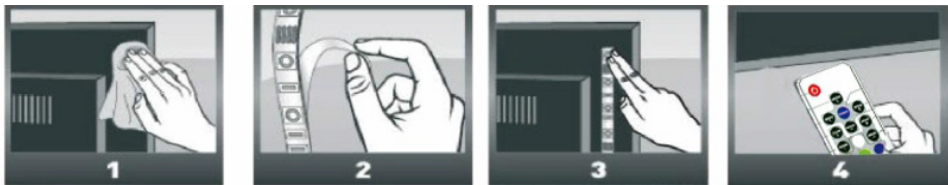
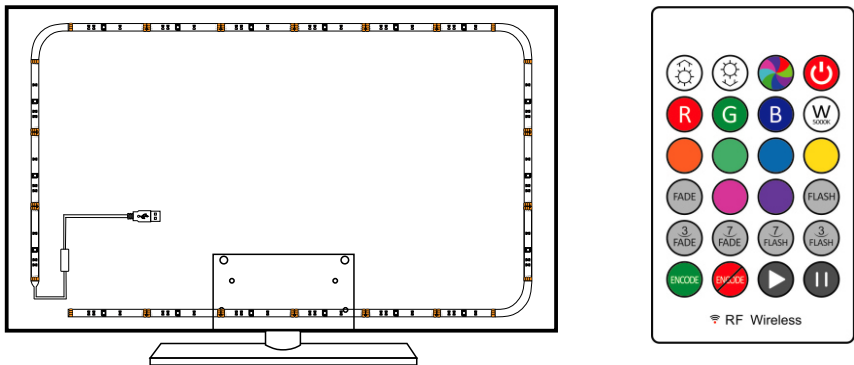


USB Backlight For TV

INSTALLATION



- 1. Make sure the back surface of the tv is clean.
- 2. The strips can be bend, do not fold the light strip.
- 3. Stick the strip on the back of TV



- ON/OFF
 - 17 Single color cycle
 - Brightness adjust/Speed adjust
 - Choose a single color, press color will fade.
 - Choose a single color, press color will flash.
 - Pair/Unpair the lights
 - On dynamic mode, press the light will stagnant at current color press , the light will continue at current mode.
- 10 kinds of single color

SPECIFICATIONS

LED STRIPS		REMOTE CONTROL	
Input	DC 5V (USB port) / 1 A	Control Mode	Remote RFcontrol
Power	4.5 W	Control Distance	Max. 20 Meters
LED Chip	3528 RGB	Battery Type	CR2025
Color	17 static colors, 38 dynamic modes dimmable	OTHERS	
Beam Angle	120°		
LED Strip	18 chips/meter		
Back Adhesive	Red 0.4 mm thickness sponge adhesive	Working Temperature	-20°C ~ 45°C
		Working Humidity	0% ~ 80% RH
		Life Span	40,000 hours

Troubleshooting

Symptom	Possible Causes	Solution
Lights turn on or flicker after TV turned off.	TV USB port still be powered when TV is off	Turn off the TV or shut down the power of TV
TV lights turn off or flash after a few minutes.	TV USB port can not supply enough power	Lower brightness to avoid this issue
	If the issue still exsist even its brightness was lowered, please test the TV light with a wall adapter and report it to us for assistance.	
TV lights change its color on its own.	Please pair the TV light with remote to avoid RF signal interference if the TV light automatically changed its color by itself, (It usually happens when you have more than one TV lights). 1), Unplug all TV lights you have. 2), Plug in the TV light you're pairing, immediately press and hold "ENCODE" button for 3 seconds once TV light plugged in. 3), The TV light will flash once or twice, then pairing successful. How to unpair? Repeat the above steps but hold down the "ENCODE" button.	
	Replace the remtoe battery.	
Remote does not work	Contact us for a remote replacement.	
TV light falls down	Dust pollution	Keep TV back surface dust-free, and replace the adhesive tape

140X210mm

This device complies with Part 15 of the FCC Rules. Operation is subject to the following two conditions: (1) this device may not cause harmful interference, and (2) this device must accept any interference received, including interference that may cause undesired operation

NOTE: This equipment has been tested and found to comply with the limits for a Class B digital device, pursuant to Part 15 of the FCC Rules. These limits are designed to provide reasonable protection against harmful interference in a residential installation. This equipment generates, uses and can radiate radio frequency energy and, if not installed and used in accordance with the instructions, may cause harmful interference to radio communications. However, there is no guarantee that

interference will not occur in a particular installation.

If this equipment does cause harmful interference to radio or television reception, which can be determined by turning the equipment off and on, the user is encouraged to try to correct the interference by one or more of the following measures:

- Reorient or relocate the receiving antenna.
- Increase the separation between the equipment and receiver.
- Connect the equipment into an outlet on a circuit different from that to which the receiver is connected.
- Consult the dealer or an experienced radio/TV technician for help.

Warning: changes or modifications not expressly approved by the party responsible for compliance could void the user's authority to operate the equipment

The device has been evaluated to meet general RF exposure requirements, the device can be used in portable exposure conditions without restriction