

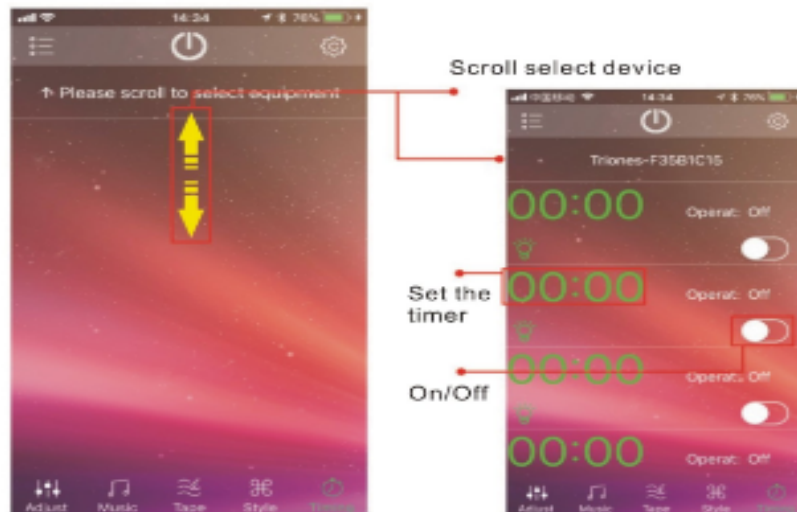


ISO7.0&Android 4.3

Download application above QR Code or go to Google Play Store/Apple Store, search for the application "HappyLighting" and download it for free.

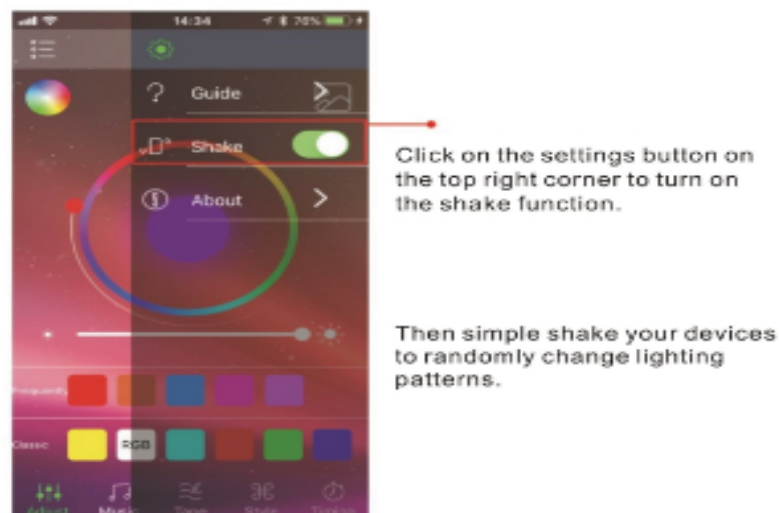
Please make sure "Bluetooth" is active to connect

9. Timing Function



Under the schedules tab at the bottom, you can setup a timer. Just click the on/off button to set.

10. Shake to change color

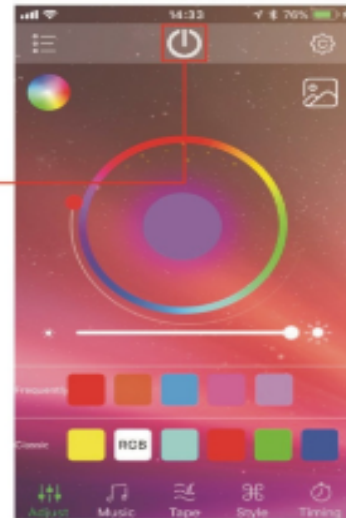


On the main page click "Menu" then select "Settings" item. Click on the switch button to enable Call or SMS reminders. All light effects can be selected for SMS reminders, only supported on Android OS. If shake control is on, shake your device in front and back to turn on/off LED, and left to right to change LED color.

Extra Attention

11

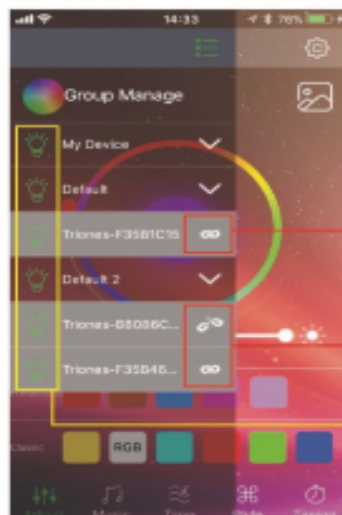
Click the top center button to turn on/off the Halo Ring.



12

Click icon to check your device connection status

Manage all of your ithms connected to your device by turning on/off the light bulb.



13

If you find that your device cannot, please try to reboot your device.

If you have trouble, please double check bluetooth is active on your device. Alternatively, you can try another device to make sure the problem is not with your device.



HappyLighting Bluetooth App

1.Specs

Item	Requirements
Phone/Pad OS Requirement	Android 4.3 and above ios 7.0 and above
Phone/Pad Bluetooth requirement	Bluetooth 4.0 Low Energy(BLE)
Bluetooth Effective Range	15M
Change Brightness /Color	<input checked="" type="checkbox"/>
Dynamic Lighting Effects	<input checked="" type="checkbox"/>

2.Product Features



3.Install Application

Thank you for your purchase. A bluetooth device must download the HappyLight App to be able to control the RGB Halos. Available for free in the Apple App store and Google Play Store.

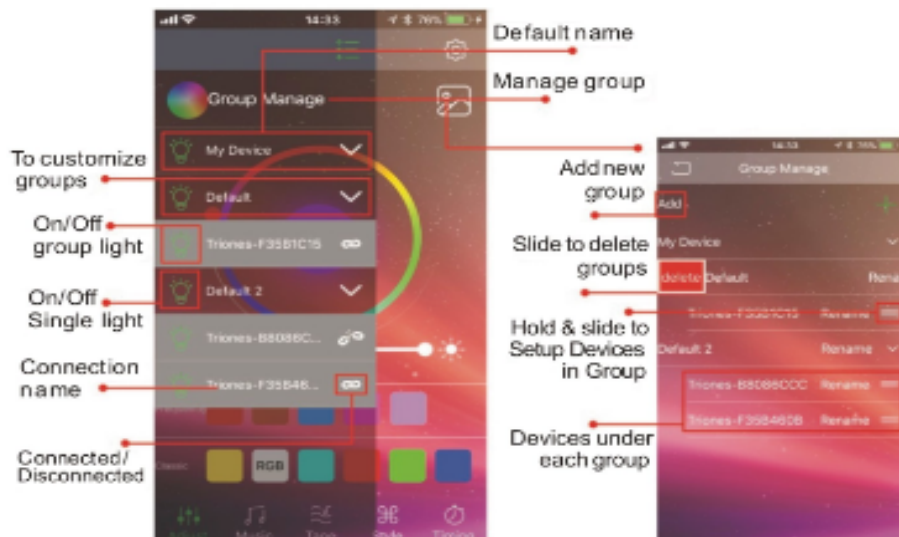


IOS7.0 & Android 4.3

Download application above QR Code or go to Google Play Store/Apple Store, search for the application "HappyLighting" and download it

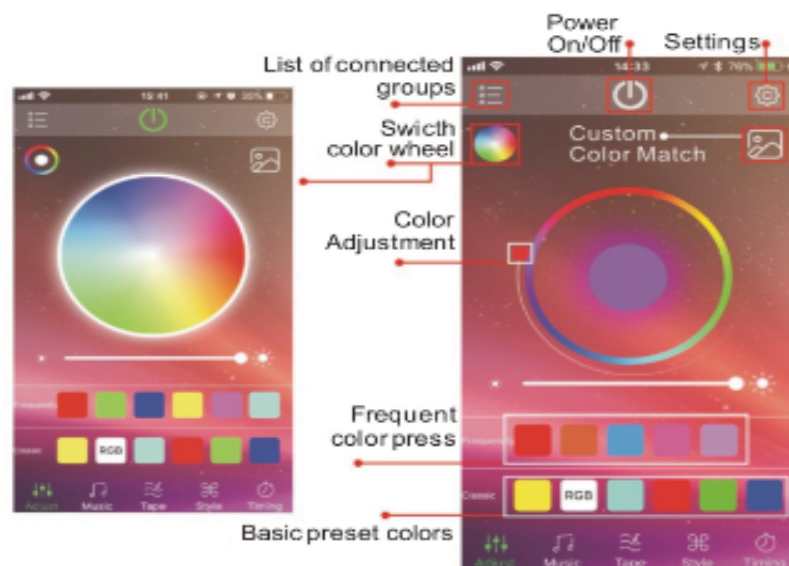
Please make sure "Bluetooth" is active to connect.

4.Scan & Cooneet



Manage multiple devices in your custom groups.
"Click Scan" in menu to list all LEDs Available. Click LED icon to connect.

5.Light Control



Simple press on the color wheel to the color you desire.

Note 1: 5 palettes are provided to setup frequently used color presets, To setup frequent colors, press a color block then press on the color wheel to the color you would like to replace it with.

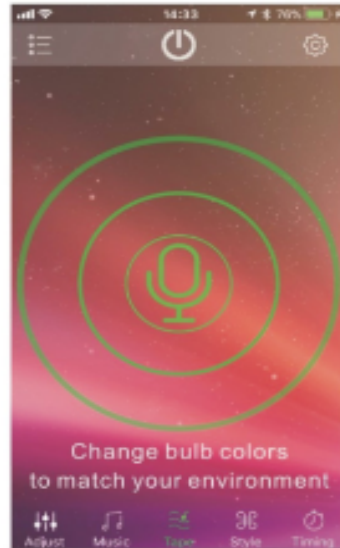
Note 2: Standard colors are default colors.

6.Music Responsive



This app can play your music on your device and the brightness and colors will change with the music.

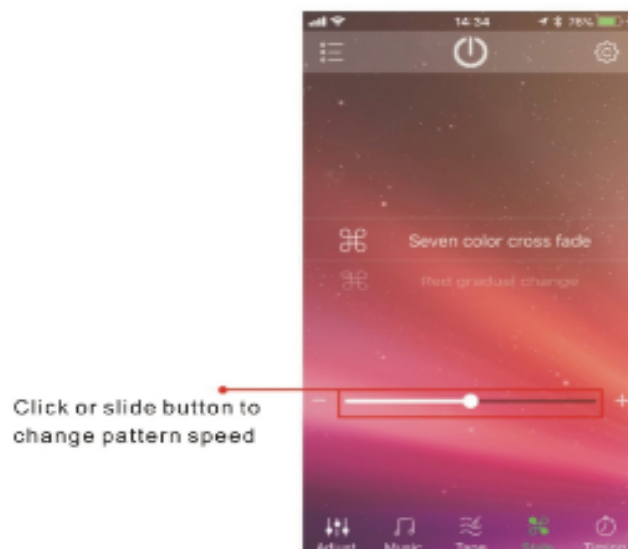
7.Voice Responsive



Voice responsive function:

This app can respond to your voice on your device and the brightness and colors will change with your voice

8.Lighting Patterns



Scroll up or down to change the lighting pattern

Warning:

Changes or modifications to this unit not expressly approved by the party responsible for compliance could void the user's authority to operate the equipment.

NOTE:

This device complies with part 15 of the FCC Rules. Operation is subject to the following two conditions: (1) This device may not cause harmful interference, and (2) this device must accept any interference received, including interference that may cause undesired operation.

FCC Statement:

This equipment has been tested and found to comply with the limits for a Class B digital device, pursuant to part 15 of the FCC Rules. These limits are designed to provide reasonable protection against harmful interference in a residential installation. This equipment generates, uses and can radiate radio frequency energy and, if not installed and used in accordance with the instructions, may cause harmful interference to radio communications. However, there is no guarantee that interference will not occur in a particular installation. If this equipment does cause harmful interference to radio or television reception, which can be determined by turning the equipment off and on, the user is encouraged to try to correct the interference by one or more of the following measures:

- Reorient or relocate the receiving antenna.
- Increase the separation between the equipment and receiver.
- Connect the equipment into an outlet on a circuit different from that to which the receiver is connected.
- Consult the dealer or an experienced radio/TV technician for help.