

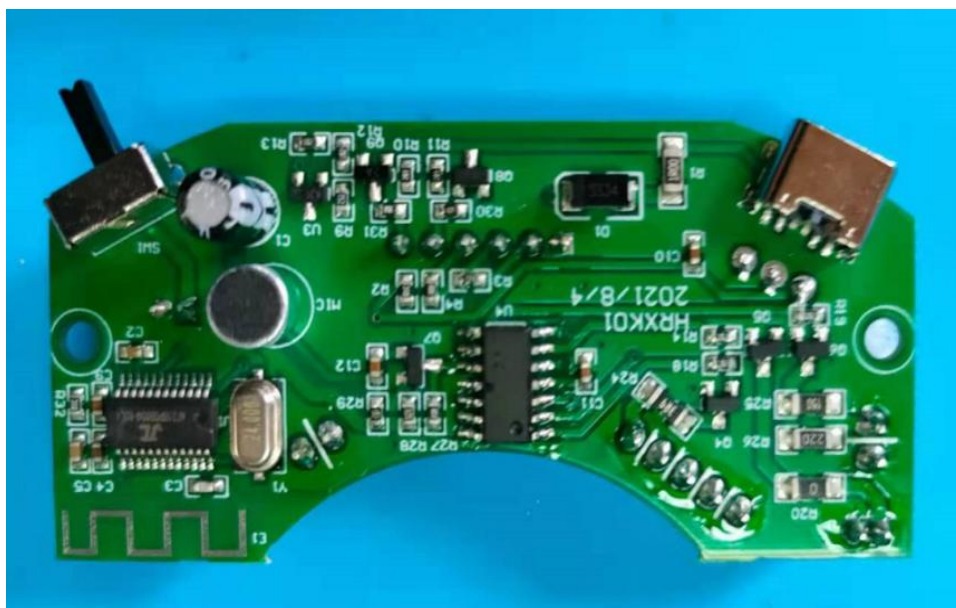
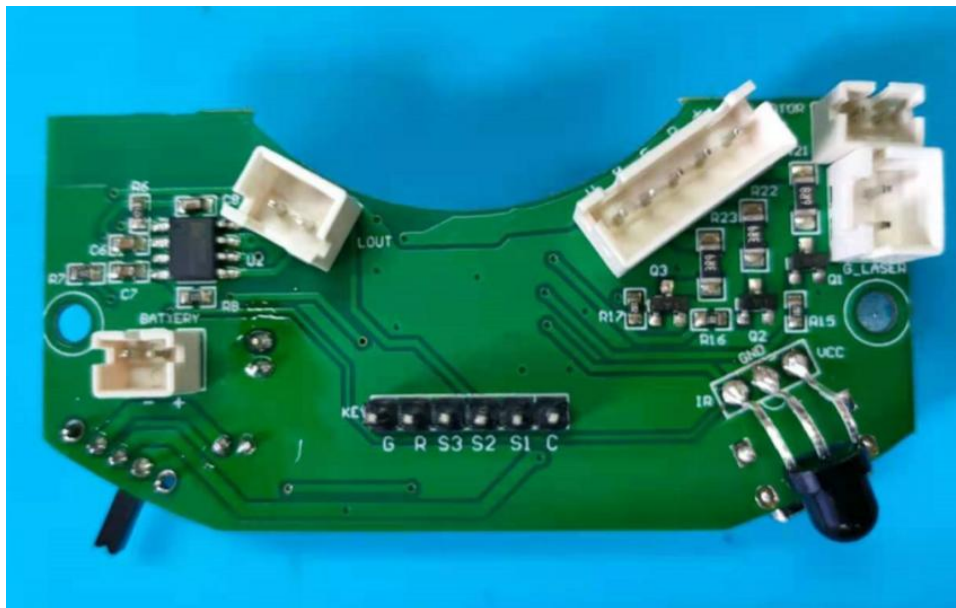
PCBA specification for music star light

HRXK01

Versions V1.0

Zhongshan HanRun Lighting Co., Ltd

一、 Product pictures



二、Product function

1. Water lines feature

- a. water pattern color total 6, single color: R-G-B-W three kinds; double color combination: RB-RG-BG three kinds; can be monochrome fixed display, also can be double color fixed display, remote control ;
- b. the brightness of water pattern is adjustable: 10% - 40% - 70% - 100% , four gears can be adjusted, remote control; the speed of water pattern can be adjusted: stop - slow - normal - fast , four gears can be adjusted, remote control, when the water pattern light is off, the motor does not work at the same time.

2. Laser characteristics:

- a. color: Single green laser effect
- b. mode: divided into two kinds, the first is steady on mode;the second is the gradual breathing pattern. remote control

3. Cycle mode

divided into two kinds:

monochrome breathing cycle mode: the water pattern rotates with a single color of B-R-G, and the laser changes from dark to bright breathing mode.

two-color breathing cycle mode: the water pattern rotates in RB-RG-BG two-color cycle, and the laser changes from dark to bright breathing mode.

4. Combination mode

can be displayed by laser alone, can be displayed by water pattern alone, can also be displayed by combination of laser + water pattern.

5. Voice mode:

according to the change of external sound or music rhythm, the light flashes with the corresponding change of rhythm.

6. Remote control mode

remote control can be used to control some complex operations (see the following instructions for host keys and remote control).

7. Timing function

built-in 1H, 2H automatic off timer, after the remote control setting, after a predetermined time 1H, 2H, music star light will automatically turn off. Of course, you can cancel the timer so that the light is always working on. automatic shutdown after 4H;remote control.

8. Music function

the music star projector can be used as a bluetooth speaker or USB storage card reader to listen to lullabies or relax on your phone, iPad or tablet via Bluetooth pairing. it can adjust the volume of the host bluetooth speaker and switch between the next and next songs

9. Charging function

use Type-C interface for charging. when the battery is fully charged, the CHARGING indicator LED will show green light, and when the battery is not fully charged, it will show red light.

10. The state of electric

when the music star light is powered on, the blue LED water pattern light is on, and the laser is in breathing mode, it will automatically shut down after 4 hours by default (24 hours without cycle).

Host Buttons



Power on/off

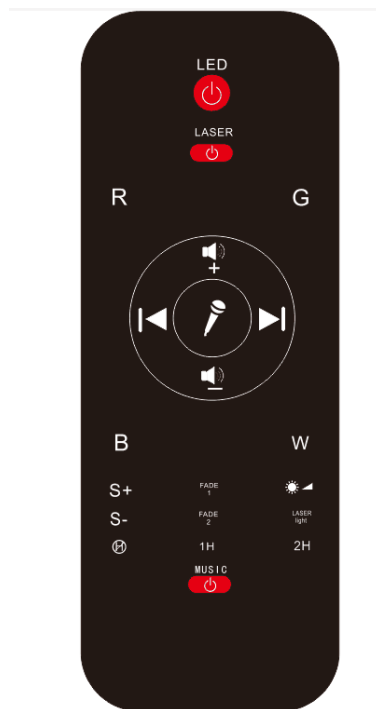


This interface can automatically identify usb disk data



DC power input: 5V/2A. use the type-c interface

Remote control Function description



LED Water pattern light switch

Control LED water pattern light on/off



Laser switch

A switch that controls the laser



Red light

Press "R" for the first time, the red light will be on, press the second time, the red light will be off (that is, this light is based on the first key light)



Green light

Press "G" for the first time, the green light will turn on, and for the second time, the green light will turn off (that is, this light is based on the first key light)



Blue light

Press "B" when the first blue light, press the second blue light off (that is, this light is based on the first key light)



White light

Press "W" when the first white light, press the second white light off (that is, this light is based on the first key light)

Can choose two colors at the same time, choose the third color, automatically remove the first color in the front two colors.



The volume increases

Turn up the volume of the device



The volume decreases

Turn down the volume of the device



Previous

Select the last song to play



Next

Select the next tune to play



Voice operated switch

Control voice control on or off (on can activate the sound control, so that LED water pattern lamp or laser light according to the external sound or music rhythm change, the light flashing corresponding rhythm change)



The motor speed

Control motor to accelerate rotation (stop - slow - normal - fast)



The motor speed

Control motor deceleration rotation (fast - normal - slow - stop)



Cancel the timing

Long press the button to cancel the timing function, when the LED and laser flash three times and make three "drops" sound as a reminder



FADE 1 (Monochromatic breathing cycle pattern)

Press “FADE 1”, The water pattern rotates in a b-R-G single color cycle, while the laser changes from dark to bright breathing mode



FADE 2 (Two-color breathing cycle pattern)

Press “FADE 2”, The water pattern rotates in rB-RG-BG two-color cycle, and the laser changes from dark to bright breathing mode



Timing 1 hour

Long press the button, timed for 1 hour, when the LED and laser flash once and make a “drop” sound as a reminder



LED Light (Water pattern brightness adjustment)

Controls the brightness of water lines (in the order of 100%-66%-33%-66%-100%)



LASER Light (Laser mode regulation)

press “LASER LIGHT”, The laser can be switched from the steady state mode or breathing mode



Timing 2 hour

Long press the button, timed for 2 hour, when the LED and laser flash once and make two “drop” sound as a reminder



Music switch

Control music on/off

warning:

The power supply of this product is USB DC5V / 2A. Once this range is exceeded, use the regulator to avoid affecting its service life.

notice:

The machine has the default automatic shutdown function within 4 hours after startup, that is, it will automatically shut down after 4 hours of work.

specification

Maximum LED power: 2 * 4W

The green laser : <1mW

power input: USB DC 5V / 2000mA

Working Temperature: -0°C to 40°C (14°F to 104°F)

Projected area: 15-50 m² (161-538 square foot)

product size: 68.6 * 33.35mm

FCC Statement:

This equipment has been tested and found to comply with the limits for a Class B digital device, pursuant to part 15 of the FCC Rules. These limits are designed to provide reasonable protection against harmful interference in a residential installation. This equipment generates, uses and can radiate radio frequency energy and, if not installed and used in accordance with the instructions, may cause harmful interference to radio communications. However, there is no guarantee that interference will not occur in a particular installation. If this equipment does cause harmful interference to radio or television reception, which can be determined by turning the equipment off and on, the user is encouraged to try to correct the interference by one or more of the following measures:

- Reorient or relocate the receiving antenna.
- Increase the separation between the equipment and receiver.
- Connect the equipment into an outlet on a circuit different from that to which the receiver is connected.
- Consult the dealer or an experienced radio/TV technician for help.

Changes or modifications not expressly approved by the party responsible for compliance could void the user's authority to operate the equipment.