

Operation Manual Of Product

Wireless Doorbell



Model: WB04 (Key Style)

Model: WB05 (Touch Style)



Please read this user manual completely and keep it with proper care.

Product Introduction

- The appearance of this product is simple, fashionable, beautiful and practical.
- The unique one button mute mode makes it more convenient for you to use.
- High baud rate RF technology, intelligent MCU sleep wake-up, with high-capacity alkaline battery, longer standby time.
- The receiver is battery powered, breaking through the constraints and placing at will, which is suitable for more occasions.
- 38 pieces of music, the front of the speaker makes sound, the volume is higher, and the sound quality is better.
- Millions of group codes are not repeated and can be combined freely to realize double control, mutual control and multi control.
- Level 4 volume adjustment, blue LED flashing, power-off memory, song volume reset.
- The transmitter adopts touch keys, long service life, waterproof and dustproof, and can be installed outdoors.
- The transmitter adopts high-performance battery, which is super power-saving, easy to paste and install.

Size Specification



Specification Parameters

	Transmitter	Parameter
1	Battery	CR2032 (Already installed)
2	Frequency	433.92MHz
3	Transmit power	10DBM
4	Battery life	≈ 3 years
5	Key mode	Touch key
6	Waterproof grade	IP65
7	Size	63mm*39mm*17mm

	Receiver	Parameter
1	Battery	3*AA Alkaline battery (User owned)
2	Frequency	433.92MHz
3	Receiving sensitivity	-110DBM
4	Use distance	*Open 250m
5	Battery life	*About 17 months (Standby time)
6	Music	38 Music
7	Size	93mm*80mm*25.5mm

* The above data are tested in open areas

* The actual use depends on the use frequency and battery quality.

Function Use

Music Adjustment: Press the music key to switch to the next music, a total of 38 music cycles.

Volume Adjustment: Press the volume key to adjust the volume from high to low, a total of 4 levels.

Mute Mode: press the mute key and the receiver enters the mute mode. Press the mute key again to return to normal mode.

Reset Function: Long press the music key for 3 seconds to reset to the first music and maximum volume.

Normal Pairing Mode: Long press the mute key for 3 seconds, the receiver will sound "Di" to enter the pairing mode, and then press the transmitter, the receiver will sound "Ding Dong", indicating that the pairing is successful. Later, you can press the music key to switch music. If pairing fails within 5 seconds, the receiver will exit pairing mode after sending "didi" twice.

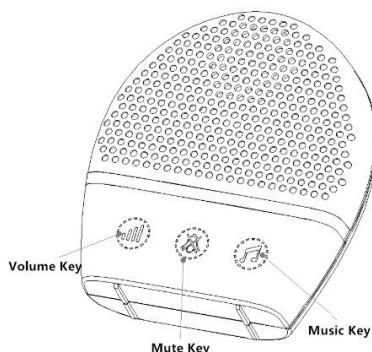
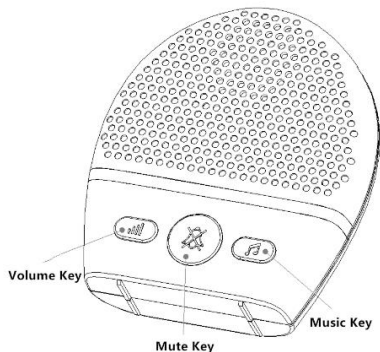
Independent Pairing Mode: After the receiver selects the favorite music, long press the volume key for 3 seconds, the host sends out "Di" sound to enter the pairing mode, and then press transmitter 1, the host sends out "Ding Dong" sound, and the pairing is successful. Press transmitter 1 later and the receiver will send the previously selected music. If pairing fails within 5 seconds, the receiver will exit pairing mode after sending "didi" twice.

As described above, another music is selected and paired with transmitter 2.

If different transmitters are installed on the front door and rear door respectively, the host will send different music after receiving the signal.

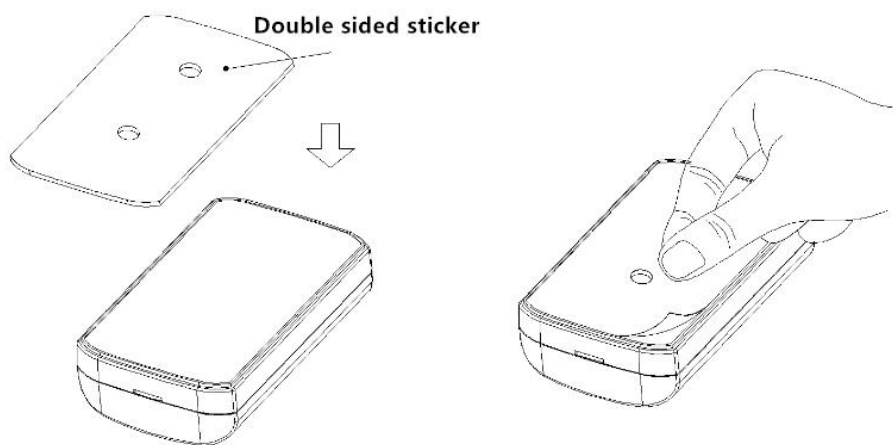
If the corresponding transmitter needs to change music, please reselect the music and pair it again.

Each receiver can be paired with up to 15 transmitters.

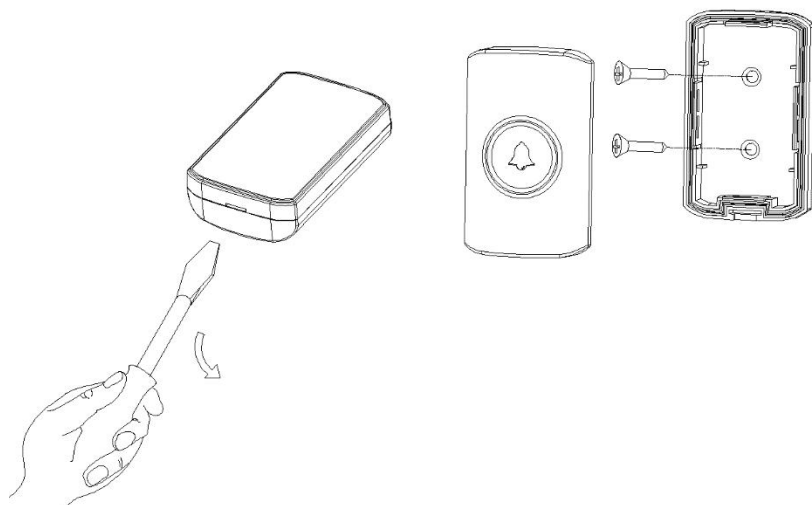


Transmitter Installation

Method 1 (Double-sided tape): Paste one side of the double-sided tape on the bottom of the housing, and then paste the transmitter in the appropriate position.

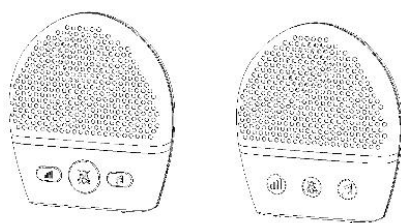


Method 2 (Screws): Pry open the shell, take out the bottom shell, fix the bottom shell on the wall or door with screws, and then assemble the shell.

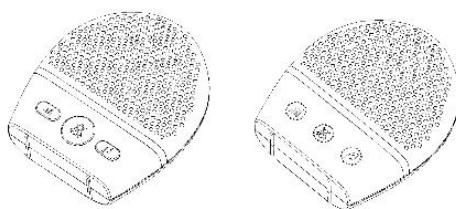


Receiver Installation

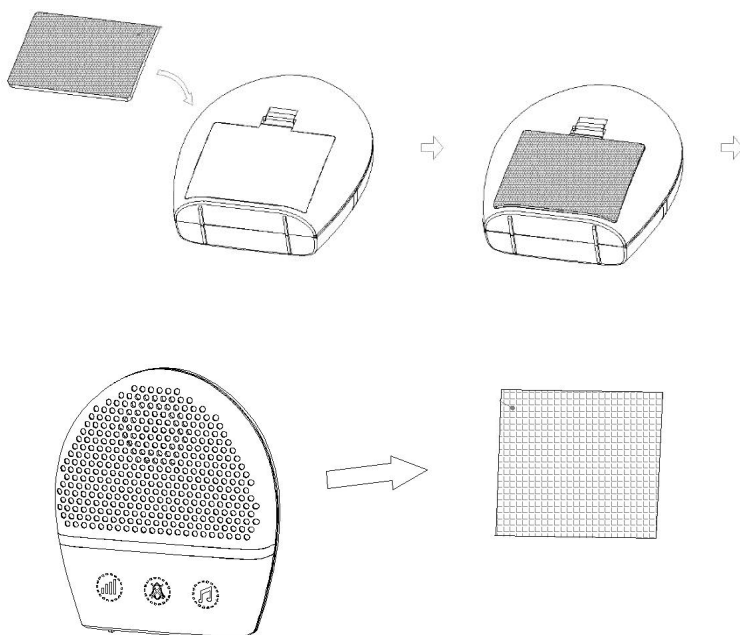
Method 1 (Standing): You can stand the receiver at your desired position at will.



Method 2 (Flat): You can put the receiver flat at your desired position.



Method 3 (Velcro sticking): Stick one side of the double-sided Velcro to the battery cover and the other side to the required position.



Troubleshooting And Analysis

Fault phenomenon	Cause of failure	Resolvent
Transmitter light does not work	Battery installation error	Check whether the battery is installed reversely and installed properly. Or replace the new battery.
Receiver inoperative	The indicator light is not on	Receiver battery low or incorrectly installed.
	The indicator light is on but there is no sound	Not paired correctly, please re pair. Check whether it is muted.
Remote control distance gets closer	The transmitter battery is low	Replace the transmitter with a new battery.
	The receiver battery is low	Replace the receiver with a new battery.
	Electronic equipment interference	Keep the transmitter or receiver away from interference.
	Incorrect installation position	Keep the transmitter or receiver away from large metal objects.
Receiver sound distortion	The receiver is low on power	Replace the receiver with a new battery. Do not mix old and new batteries. Please use alkaline batteries.
The speaker is noisy	Foreign matter on speaker surface	Please remove foreign matters from the speaker surface.

Products And Accessories



Matters Needing Attention

- Please use alkaline battery instead of carbon battery for the receiver.
- Do not use rechargeable batteries for the receiver.
- Do not mix the old and new batteries of the receiver.
- Do not use this product in high temperature and humid environment.
- Keep away from water source and heat source to avoid damaging the product and causing potential safety hazards.
- Protect the environment and respect the law. Please dispose of waste batteries properly.

FCC Statement

This device complies with part 15 of the FCC rules. Operation is subject to the following two conditions: (1) this device may not cause harmful interference, and (2) this device must accept any interference received, including interference that may cause undesired operation.

Changes or modifications not expressly approved by the party responsible for compliance could void the user's authority to operate the equipment.

NOTE: This equipment has been tested and found to comply with the limits for a Class B digital device, pursuant to part 15 of the FCC Rules. These limits are designed to provide reasonable protection against harmful interference in a residential installation. This equipment generates uses and can radiate radio frequency energy and, if not installed and used in accordance with the instructions, may cause harmful interference to radio communications. However, there is no guarantee that interference will not occur in a particular installation. If this equipment does cause harmful interference to radio or television reception, which can be determined by turning the equipment off and on, the user is encouraged to try to correct the interference by one or more of the following measures:

- Reorient or relocate the receiving antenna.
- Increase the separation between the equipment and receiver.
- Connect the equipment into an outlet on a circuit different from that to which the receiver is connected.
- Consult the dealer or an experienced radio/TV technician for help.

The device has been evaluated to meet general RF exposure requirement. The device can be used in portable exposure condition without restriction.