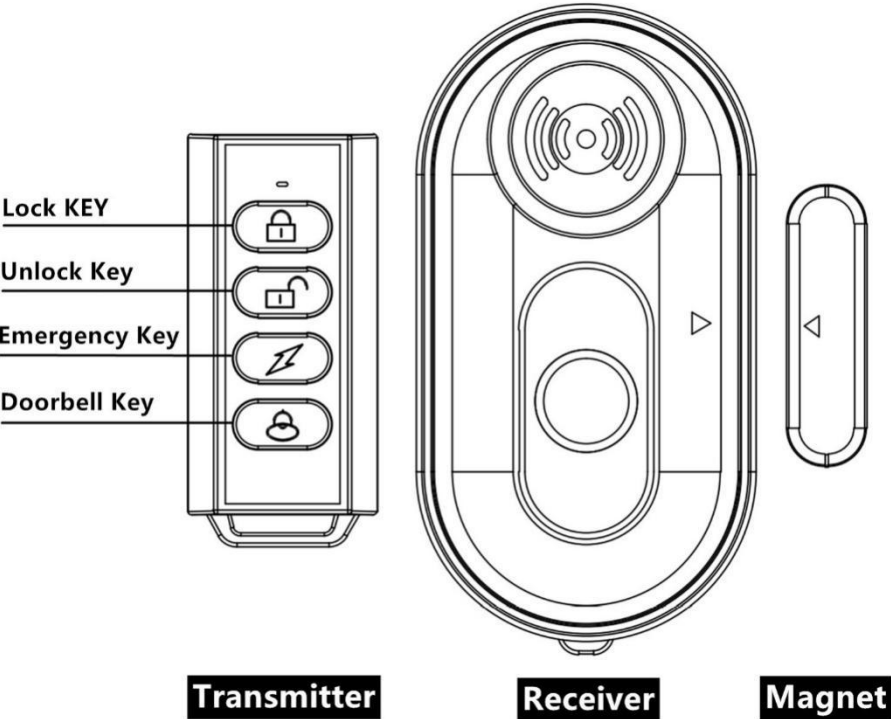


Operation Manual Of Product

Wireless Door Magnetic Alarm

Model :WA01



Please read this user manual completely and keep it with proper care.

Product Introduction

- The appearance of this product is simple, fashionable, beautiful and practical.
- High baud rate RF technology, intelligent MCU sleep wake-up.
- Up to 125dB loud alarm and strong light flashing provide sufficient deterrence.
- Wireless remote control operation, don't scare yourself, just scare thieves.
- Emergency alarm function, in case of danger, call the police in time.
- The doorbell mode can be used as a doorbell during the day and an alarm at night.
- Double sided adhesive tape installation, without professionals, just paste and use.
- The special battery cover gives thieves nowhere to start.
- The receiver is equipped with large capacity AAA alkaline battery for longer standby time.
- The transmitter adopts CR2032 high-capacity battery, which is standby for 3 years and more environmentally friendly.
- Transmitter or receiver can be added to realize dual control / multi control / mutual control and other functions.
- Original standard high-quality accessories can be used immediately.

Specification Parameters

	Transmitter	Parameter
1	Battery	CR2032 (Already installed)
2	Capacity	240mAH
3	Frequency	433.92MHz
4	Standby current	0.1UA
5	Working current	≈15mA
6	Battery life	≈ 3 years
7	Service temperature	-10°C - 60°C
8	Size	58mm*26mm*10mm

	Receiver	Parameter
1	Battery	2*AAA / LR03 Alkaline battery (User owned)
2	Battery life	*About 12 months
3	Frequency	433.92MHz
4	Receiving sensitivity	-113DBM
5	Use distance	*Open 50m
6	Detection distance	≥12mm
7	Alarm volume	≈125dB
8	Service temperature	-10°C - 60°C
9	Size	90mm*48mm*19mm

* The actual use depends on the use frequency and battery quality.

* The above data are tested in open areas

Function Use

1. Locking and unlocking

1.1 Press the lock key of the remote control, and the receiver will enter the alert state after "BiBiBi" three times.

1.2 When the receiver is on alert and the magnet is removed, the alarm will last for 30 seconds. Press the unlock key to stop the alarm and enter the waiting state.

1.3 In the alert state, press the unlock key, the receiver will sound "Bi" and enter the waiting state.

2. Emergency alarm

2.1 Pressing the emergency key of the transmitter will alarm for 30 seconds, and the emergency key is valid in any mode.

To cancel the emergency alarm sound, you can only press the unlock key to stop the alarm.

3. Doorbell mode

3.1 When the receiver is waiting, press the doorbell key of the transmitter. After the receiver rings "Ding Dong", enter the doorbell mode, remove the magnet, and the receiver rings "Ding Dong" to remind that the door has been opened.

3.2 In the doorbell mode, press the unlock key to exit the doorbell mode.

4. Add transmitter

To add multiple transmitters, follow these steps:

4.1 Remove the receiver battery and reinstall the battery after a few seconds. The receiver emits "BiBiBi" three times. Before these three times are over, press the lock key of the new transmitter, and the host will emit "Bi" once it receives it, indicating that the pairing is successful.

4.2 If you need to add more transmitters, please repeat the above process.

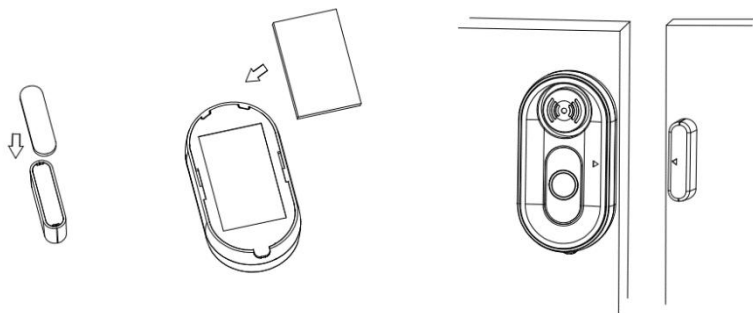
4.3 One receiver can add up to 15 transmitters. When more than 15, the first transmitter will fail.

Receiver Installation

1. Tear off one side of the small double-sided tape and stick it on

the back of the magnet.

2. Tear off one side of the large double-sided adhesive tape and stick it on the back of the receiver.
3. Use double-sided adhesive tape to stick the receiver and magnet to the door and door frame respectively.

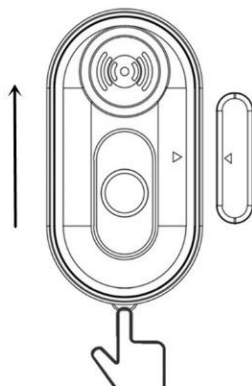


Warning:

1. Please pay attention to align the arrow of the magnet with the arrow on the right of the receiver.
2. The distance between the receiver and the magnet shall not exceed 12mm.
3. When pasted on metal objects, the magnetic attraction distance will be closer.

Removal diagram

As shown in the figure, press the finger position in the figure below with one hand, hold the receiver with the other hand and push it upward in the direction of the arrow to remove it.



Troubleshooting And Analysis

Fault phenomenon	Cause of failure	Resolvent
Transmitter light does not work	Battery installation error	Check whether the battery is installed reversely and installed properly. Or replace the new battery.
Receiver inoperative	The indicator light is not on	Receiver battery low or incorrectly installed.
	The indicator light is on and there is no sound	Not paired correctly, please re pair.
Remote control distance gets closer	The transmitter battery is low	Replace the transmitter with a new battery.
	The receiver battery is low	Replace the receiver with a new battery.
	Electronic equipment interference	Keep the transmitter or receiver away from interference.
	Incorrect installation position	Keep the transmitter or receiver away from large metal objects.
Receiver sound distortion	The receiver is low on power	Replace the receiver with a new battery. Do not mix old and new batteries. Use alkaline batteries.
The door magnetic detection distance becomes close or fails	The receiver is too far from the magnet	The receiver and magnet are installed close to each other, and the arrows of the receiver and magnet are aligned

FCC Statement

This device complies with part 15 of the FCC rules. Operation is

subject to the following two conditions: (1) this device may not cause harmful interference, and (2) this device must accept any interference received, including interference that may cause undesired operation.

Changes or modifications not expressly approved by the party responsible for compliance could void the user's authority to operate the equipment.

NOTE: This equipment has been tested and found to comply with the limits for a Class B digital device, pursuant to part 15 of the FCC Rules. These limits are designed to provide reasonable protection against harmful interference in a residential installation. This equipment generates uses and can radiate radio frequency energy and, if not installed and used in accordance with the instructions, may cause harmful interference to radio communications. However, there is no guarantee that interference will not occur in a particular installation. If this equipment does cause harmful interference to radio or television reception, which can be determined by turning the equipment off and on, the user is encouraged to try to correct the interference by one or more of the following measures:

- Reorient or relocate the receiving antenna.
- Increase the separation between the equipment and receiver.
- Connect the equipment into an outlet on a circuit different from that to which the receiver is connected.
- Consult the dealer or an experienced radio/TV technician for help.

The device has been evaluated to meet general RF exposure requirement. The device can be used in portable exposure condition without restriction.