

Operation Manual of Product

KEY FINDER

Model: SF04C



Please read this user manual completely and keep it with proper care.

Product introduction

★ This remote key finder can help you to find the lost keys,remotes, purse,eyeglass,cane,and other easily lost items quickly. With just one press on the button,the beep sound and flashes will lead you to find the lost items.

★ The transmitter is equipped with a key buckle, which can be hung on the sticky hook when not in use, and can be carried with you to find lost items.

★ The receiver is equipped with a key ring, double-sided adhesive, to meet a variety of use scenarios.

Product diagrams



Change the battery

A. Transmitter

The transmitter battery has been installed.

If the battery needs to be replaced, please prepare CR2032 battery.

1. Pry off the battery cover with a slotted screwdriver.
2. Put battery into the battery compartment, make sure the “+” side of the battery is facing up.
3. Replace the battery door in its original position.

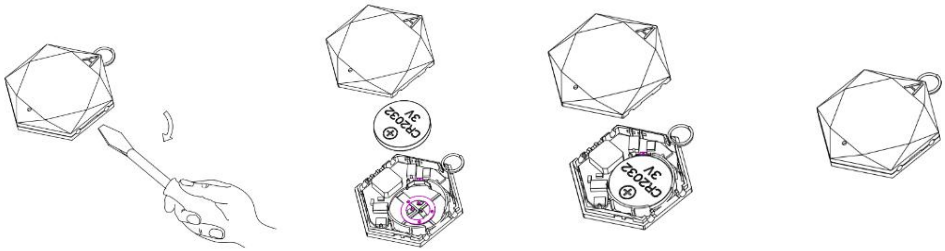
B. Receiver

The receiver battery has been installed. Pull out the insulating sheet and

use it.

If the battery needs to be replaced, please prepare CR2032 battery.

1. Pry off the housing with a slotted screwdriver.
2. Remove the old battery.
3. Put new battery into the battery compartment, make sure the “+” side of the battery is facing up.
4. Reseat the housing.



Protect the environment and respect the law.

Please handle the old battery properly .

Never discard it by throwing into a garbage bin.

Function use

1. Attach the receivers to your frequently lost items with the key rings or double sided adhesive tape.
2. Press the corresponding button on the transmitter.
3. If the receiver is in rang(30 meters),it will beep and meanwhile the LED indicator will flash.
4. If no beep is heard,change your location or use new batteries and press the button again.

Specification parameters

- Transmitter battery: CR2032 (Has been installed)
- Transmitter battery life: 2-3 years

- Receivers battery: CR2032 (Has been installed)
- Receiver battery life: 12 months
- Working rang: 30-40 meters (Open space)
- Sound: 70-85db
- Frequency: 433.92MHz

Fault self inspection

- If the LED of the transmitter is dim or has no function, please replace the battery and try again.
- If the LED of the receiver is dim or does not light, and the buzzer does not sound. Please replace the battery and try again.

Important notice

- Do not use this product in humid environment.
- This product is not a toy, please keep it away from children to avoid eating by mistake.
- Keep away from water sources and heat sources when using, so as not to damage products and pose potential safety hazards.

FCC Statement

This device complies with part 15 of the FCC rules. Operation is subject to the following two conditions: (1) this device may not cause harmful interference, and (2) this device must accept any interference received, including interference that may cause undesired operation.

Changes or modifications not expressly approved by the party responsible for compliance could void the user's authority to operate the equipment.

NOTE: This equipment has been tested and found to comply with the limits for a Class B digital device, pursuant to part 15 of the FCC Rules. These limits are designed to provide reasonable protection against harmful interference in a residential installation. This equipment generates uses and can radiate radio frequency energy and, if not installed and used in accordance with the instructions, may cause harmful interference to radio communications. However, there is no guarantee that interference will not occur in a particular installation. If this equipment does cause harmful interference to radio or television reception, which can be determined by turning the equipment off and on, the user is encouraged to try to correct the interference by one or more of the following measures:

- Reorient or relocate the receiving antenna.
- Increase the separation between the equipment and receiver.
- Connect the equipment into an outlet on a circuit different from that to which the receiver is connected.
- Consult the dealer or an experienced radio/TV technician for help.

The device has been evaluated to meet general RF exposure requirement. The device can be used in portable exposure condition without restriction.