

Smart camera

Instruction Manual

1. Download and Install the APP

Using WeChat/browser, etc. , scan the QR code to download and install the APP, or search for “联了么/Linklemo” in the Apple Store/Google Play/Mobile App Store and install it.



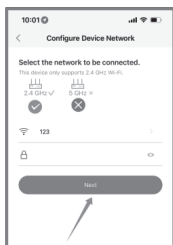
APP icon: “联了么/Linklemo”

2. APP Connection

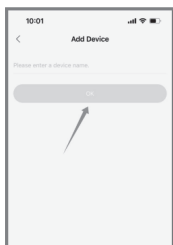
- (1) Open the APP, register and log in;
- (2) Open the mobile phone settings to connect to 2.4G WiFi
- (3) Enter the distribution network mode
 - a. Key payment: Long press ON / OFF for 2 seconds to open the machine, long press MODE for 5 seconds until the blue indicator light flashes to enter the distribution network mode;
 - b. Dial payment: after turning on the key to open the machine, long press the MODE key for 5 seconds until the blue indicator light flashes into the distribution network mode;
- (4) Click “Add Device” in APP to automatically scan devices until the device “ ” is scanned (FIG. 1), click “Bind Now” corresponding device and click “Next” (FIG. 2). After adding the successful blue indicator lights on, you can customize the device name(FIG. 3), which means successful addition.



(FIG.1)



(FIG.2)



(FIG.3)

* If the device cannot be added for a long time, long press the MODE key for 5 seconds to re-enter the distribution network mode

3. Matters Needing Attention

- (1) WiFi network environment is good.
The device does not support 5G WiFi;
- (2) Try not to stick to the metal door above the installation;
- (3) You must set permissions through the APP to normally use the product;
- (4) Ensure that the power supply is sufficient and the power supply is connected;
- (5) After installation, please tear off the lens protective film before use.

FCC Caution:

This device complies with part 15 of the FCC Rules. Operation is subject to the following two conditions:
(1) This device may not cause harmful interference, and
(2) this device must accept any interference received, including interference that may cause undesired operation.

Any Changes or modifications not expressly approved by the party responsible for compliance could void the user's authority to operate the equipment.

Note: This equipment has been tested and found to comply with the limits for a Class B digital device, pursuant to part 15 of the FCC Rules. These limits are designed to provide reasonable protection against harmful interference in a residential installation. This equipment generates uses and can radiate radio frequency energy and, if not installed and used in accordance with the instructions, may cause harmful interference to radio communications. However, there is no guarantee that interference will not occur in a particular installation. If this equipment does cause harmful interference to radio or television reception, which can be determined by turning the equipment off and on, the user is encouraged to try to correct the interference by one or more of the following measures:

- Reorient or relocate the receiving antenna.
- Increase the separation between the equipment and receiver.
- Connect the equipment into an outlet on a circuit different from that to which the receiver is connected.
- Consult the dealer or an experienced radio/TV technician for help.

To maintain compliance with FCC's RF Exposure guidelines, This equipment should be installed and operated with minimum distance between 20cm the radiator your body: Use only the supplied antenna.