

LIMITED WARRANTY  
EXCLUSION OF CERTAIN DAMAGES

The GUDEHOLO UHF wireless microphone systems are warranted to be free from defects in material and workmanship for 12-month from the date of sale to the original purchaser.

**Contact**  
**Support@gudeholo.com**  
**(707) 625-0008**

Thanks for choosing us. Please read this instruction carefully and ensure the proper use of your system. We would not be liable if any damages happen

because of improper use.

GUDEHOLO

Email: support@gudeholo.com

Phone: (707)625-0008

# GUDEHOLO USER MANUAL



## UHF Wireless Microphone System

### 2 x 20 Channels Handheld



**ATTENTION**  
**RISQUE D'ELECTROCUTION!**  
**NE PAS OUVRIR!**

CAUTION: TO REDUCE THE RISK OF ELECTRIC SHOCK, DO NOT REMOVE COVER (OR BACK). NO USER-SERVICEABLE PARTS INSIDE. REFER SERVICING TO QUALIFIED SERVICE PERSONNEL



This lightning flash with arrowhead symbol within an equilateral triangle is intended to alert the user to the presence of non-insulated "dangerous voltage" within the product's enclosure that may be of sufficient magnitude to constitute a risk of electric shock.



The exclamation point within an equilateral triangle is intended to alert the user to the presence of important operating and maintenance instructions in the literature accompanying the appliance.

**WARNING**

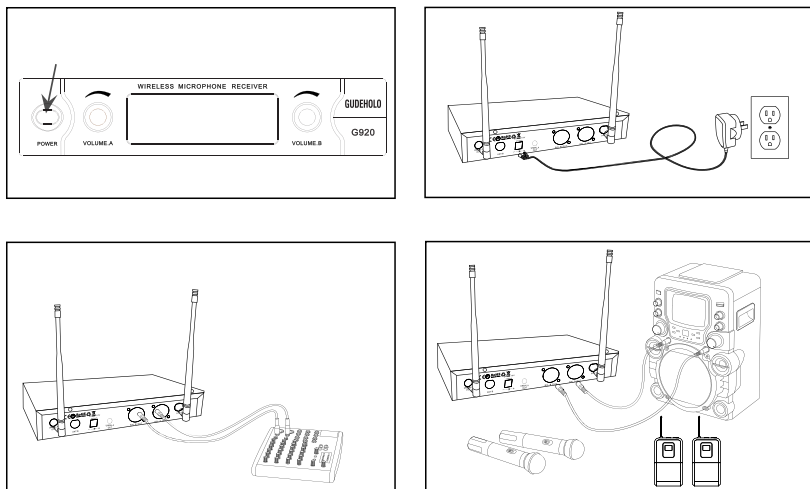
TO PREVENT FIRE OR SHOCK HAZARD. DO NOT USE THIS PLUG WITH AN EXTENSION CORD, RECEPTACLE OR OTHER OUTLET UNLESS THE BLADES CAN BE FULLY INSERTED TO PREVENT BLADE EXPOSURE. TO PREVENT FIRE OR SHOCK HAZARD. DO NOT EXPOSE THIS APPLIANCE TO RAIN OR MOISTURE. TO PREVENT ELECTRICAL SHOCK, MATCH WIDE BLADE PLUG TO WIDE SLOT AND FULLY INSERT.

**New GUDEHOLO 900MHz Frequencies**

Receiver A Frequencies		Receiver B Frequencies	
CH01	902.3	CH01	917.6
CH02	902.8	CH02	918.1
CH03	903.3	CH03	918.6
CH04	903.8	CH04	919.1
CH05	904.3	CH05	919.6
CH06	904.8	CH06	920.1
CH07	905.3	CH07	920.6
CH08	905.8	CH08	921.1
CH09	906.3	CH09	921.6
CH10	906.8	CH10	922.1
CH11	907.3	CH11	922.6
CH12	907.8	CH12	923.1
CH13	908.3	CH13	923.6
CH14	908.8	CH14	924.1
CH15	909.3	CH15	924.6
CH16	909.8	CH16	925.1
CH17	910.3	CH17	925.6
CH18	910.8	CH18	926.1
CH19	911.3	CH19	926.6
CH20	911.8	CH20	927.1

All the frequencies under the new FCC Rules.

## 6. Turn on receiver



## HOW TO CHANGE THE FREQUENCY CHANNEL

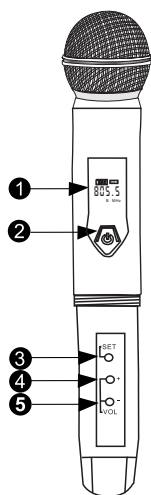
### 7 After quick setup

Unscrew the battery cover of the handheld mic

Press "Channel Switch" button **③** SET

After 2 secs, the mic and the receiver will be sync automatic

Each mic get 20 channels built-in



## INTRODUCTION

Thank you for purchasing a GUDEHOLO UHF Wireless Microphone System. This is 2 x 20 frequencies channels system, ideal for church wedding small party and other scene.

## PACKAGE CONTENT

- 2 x Handheld Microphone Transmitter
- Dual-Channel Wireless Receiver
- Power Supply
- User Manual
- Portable Case
- 6.5mm Audio Cable
- 2 x Antenna
- 4 x AA Batteries

## SYSTEM FEATURES

### G920 RECEIVER

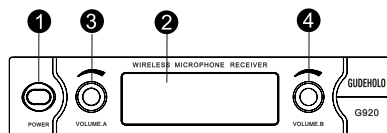
- Working range: up to 150 ft
- Battery Life: 15 Hours by using original AA battery
- 20 UHF frequencies channels each
- Dual rear panel permanently swivel antennas
- Front panel with LCD displays, Channel with frequency, transfer status RF/AF level
- Back panel with fixed Balanced XLR1/4" jacks, audio line outputs and DC input jack
- Externally powered with included DC adapter(13.5V, 350mA)

### G920 HANDHELD MIC TRANSMITTER

- Sleek metal housing with internal antenna for optimum aesthetics and durable long life
- Unidirectional neodymium dynamic cartridge for optimum true sound, maximum feedback rejection and minimal handling noise
- Built-in 20 frequency channels
- Power On/Off.
- Channel Switch button under battery cover.
- Status LCD display for frequency channel and battery level
- Convenient, economical operation with two AA alkaline batteries

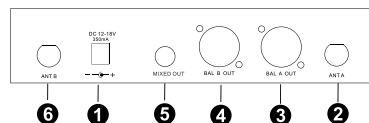
## DUAL CHANNEL RECEIVER FUNCTION

### Front panel



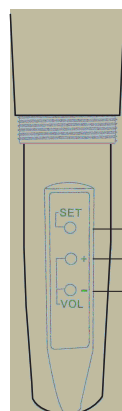
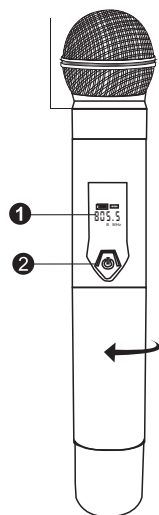
- ① Power Switch
- ② LED Display
- ③ CHA volume adjust
- ④ CHB volume adjust

### Back panel



- ① (DC) power input
- ② A receiving antenna jack
- ③ CHA-channel balanced (XLR) output audio jack
- ④ CHB-channel balanced (XLR) output audio jack
- ⑤ CHA channel 1/4 inch audio output jack
- ⑥ B receiving antenna jack

## G920 HANDHELD MIC TRANSMITTER



### Function

- ① LED Display
- ② Power Switch
- ③ SET (Channel Switch)
- ④ VOL+
- ⑤ VOL-

## QUICK SET UP GUIDE

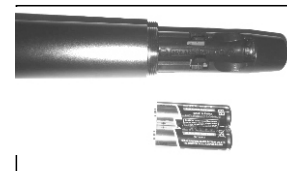
Follow these instructions to set up and running in very little time.

1.Install AA batteries.in the handheld transmitter or bodypack.Refer to the diagrams on the equipment to ensure batteries are positioned correctly.

**Alert :incorrect installation might cause burn the microphone transmitter.**

2. **Attach antennas** to the back of the receiver.Keep antenna straight while screwing it into the connector (2a).

After attached.bend antennas into position (2b)



(1)



(2a)



(2b)

3.Connect power supply. Plug in the DC power supply ( 110-240V, DC 13.5 V 350mA )



(3a)



(3b)

4.Connect receiver to mixer or amplifier.Make sure audio levels on the mixer are muted or off.For PA System,use the 1/4" AF output(line level unbalanced,4b).For all other applications use the XLR output (mic level 4a)



(4a)



(4b)

5.Turn on transmitter



(5a)

## FCC Statement

This device complies with part 15 of the FCC rules. Operation is subject to the following two conditions: (1) this device may not cause harmful interference, and (2) this device must accept any interference received, including interference that may cause undesired operation.

Changes or modifications not expressly approved by the party responsible for compliance could void the user's authority to operate the equipment.

NOTE: This equipment has been tested and found to comply with the limits for a Class B digital device, pursuant to part 15 of the FCC Rules. These limits are designed to provide reasonable protection against harmful interference in a residential installation. This equipment generates uses and can radiate radio frequency energy and, if not installed and used in accordance with the instructions, may cause harmful interference to radio communications. However, there is no guarantee that interference will not occur in a particular installation. If this equipment does cause harmful interference to radio or television reception, which can be determined by turning the equipment off and on, the user is encouraged to try to correct the interference by one or more of the following measures:

- Reorient or relocate the receiving antenna.
- Increase the separation between the equipment and receiver.
- Connect the equipment into an outlet on a circuit different from that to which the receiver is connected.
- Consult the dealer or an experienced radio/TV technician for help.

The device has been evaluated to meet general RF exposure requirement. The device can be used in portable exposure condition without restriction.