

DoHonest[®]

HD Digital Wireless Backup Camera & Monitor Kit

Product Manual / Installation Instructions



*Please read this manual thoroughly before operating the device,
and keep it for future reference.*

Customer Service Team Email: vf@rearcamera.store

As a brand manufacturer, we offer a two-year warranty, 30-day money-back guarantee and 24-hour online service. If you have any product questions, please contact us.

1: Certificate

This system has been certified by the following authorities and is safe to use: CE & FCC & EMC & RoHS & Waterproof.



2: Package includes:

- 1* Digital Wireless License plate camera
- 1* Digital Wireless Monitor
- 2* Power Cords
- 1* Windshield Mount Bracket
- 1* Cigarette lighter adapter
- 1* Taps
- 1* Split connector adapter
- 1* Antenna

- 1* Instruction manual



3: Application

The system is compatible for Cars, Pickups, Smaller RVs, Campers, Trucks (with 9v - 24v power)



If you meet any signal issue, like flickers with the image, just contact us for tech support or we can send an upgrade kit which has stronger signal for replacement.

4: Working Voltage

Please note below data of power supply input to the monitor and camera.

Note: If the power over 24V to camera, it will cause the camera damaged.

Monitor: voltage range: 11V-36V

Camera and Transmitter: 11V-24V

5: Installation video

Please watch below video on YouTube to help you install the system.

<https://youtu.be/M7YDkjh1FoM>

Note: If you are unable to open the video, there may be a typing software error.

You have two ways to access the videos:

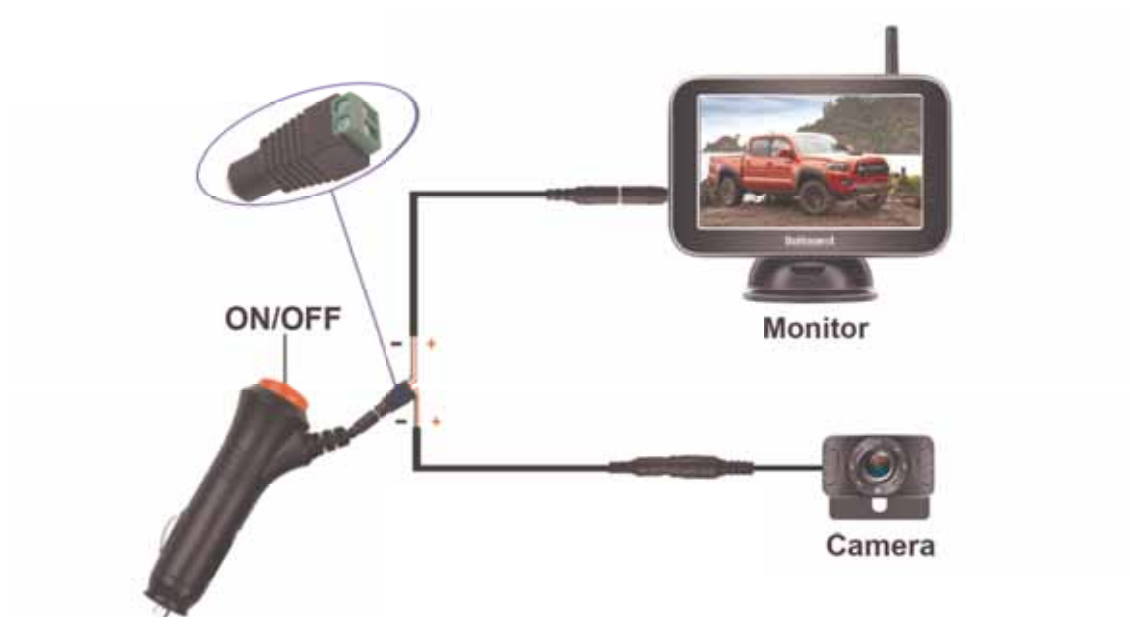
- 1) Search the video id [M7YDkjh1FoM](https://youtu.be/M7YDkjh1FoM) on www.youtube.com
- 2) Contact after-sales service team vf@rearcamera.store to get the links.

6: Testing before Installation

After you receive the system, please test the device before installation.

Please reference the way below image showed.

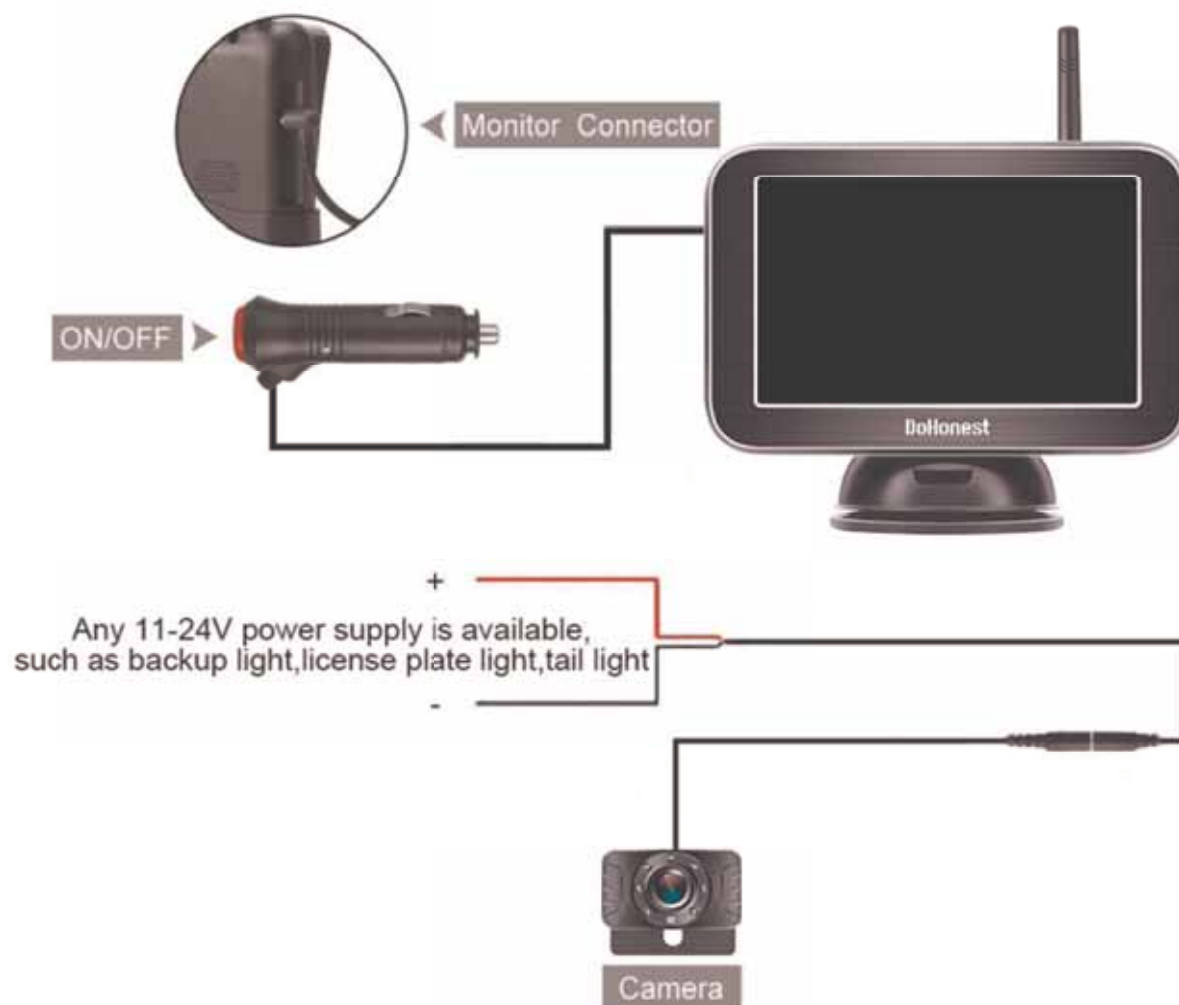
- (1) Plug power cords to the monitor and merged the power wires to camera ,red-red, black-black.
- (2) Loose the screws on green adapter, then insert the red wire(copper wire) to Positive(+) slot, and the black wire(copper wire) to Negative(-) slot.
- (3) Plug to cigarette lighter and turn on the red switch. If you see image on monitor, it means the system works well.



After testing, you need to make sure that the image appears on screen, then you can install it on your vehicle.

7: Wires connection

- (1) The monitor can be powered by a cigarette lighter.
- (2) If you just need the system used for back-up, please connect the camera to back-up light/reverse light. The red wire on the camera is connected to the positive pole of the vehicle light wire, and the black wire is connected to the negative pole of the vehicle light wire.
- (3) If you want the system to work for continuous use, please connect the camera to tail light/running light / License plate light which is continuous on.



Warning:

1. The working voltage range of the camera is 11V-24V, but we recommend the customer to use on 12V, because the power supply voltage of most vehicles are 12V. If the power supply voltage of the camera exceeds 24V for a long time or exceeds 40V for a short time, it will cause the camera's extension wire to be smoking and damaged wires that caused the system doesn't work, but it will not be caught fire. There is no safety issue.
2. Please pay attention to the positive and negative poles of the wire. If the positive and negative poles are reversed, it may cause the no images

and please correct the positive wire and negative wire asap. Please don't judge the positive wire or negative wire with the color of wires, You should search it on internet or asking the professional person or use the tools to confirm it.

Or the no images issue caused by the touch connections of the T-Taps, please check and remove the T-Taps to hardwire them to the car light wire.

8: There is a power cord that can be powered supply to the monitor from ACC/Fuse/Radio etc. Red wire connects to the Positive, while black wire to the Ground or Negative.



9: Installation of camera

(1)The camera need to be attached to the license plate, and the power cord needs to be connected to the reversing light or taillight. The red wire is connected to the Positive, and the black wire to the Negative or Ground (the metal sheet on the car).

This camera can hide the holder in the back of the license plate. As shown below:



10: We have prepared a T-Taps adapter to better protect the cord of the reversing back-up light or tail light, please reference the picture below, which makes the installation easier.

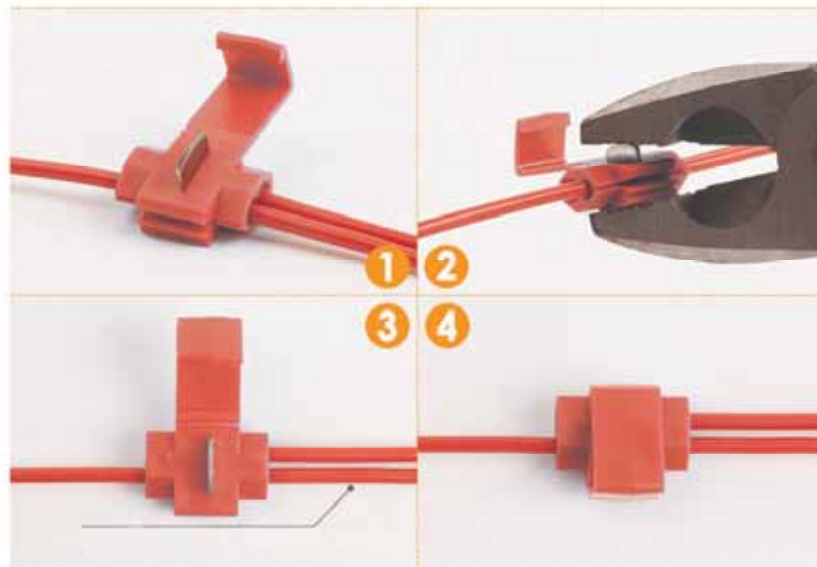
Step1-step4:

Step1: Plug the power cord of the reversing lamp into the first hole of the clamp.

Step2: Put the backing auxiliary wire into the second hole of the clamp (the hole is blocked to prevent leakage)

Step3: Clamp the adapter, and clamp the iron sheet to the bottom.

Step4: The step is finished.



11: Antenna for license plate backup camera is Waterproof .

There is a thin wire with come from the camera (see below sample image)

The antenna is waterproof, you can put the antenna outside or inside the vehicle, it will not effect by the water or rain.

Please fix it on a proper position will make the signals transmission powerful,if the vehicle is large, please make the antenna on the good position.



12: Monitor Installation

The monitor can be attach to the Windshield or Dashboard.



- (i) First assemble the parts of the bracket together
- (ii) Stick a round piece of iron behind the monitor
- (iii) Stick the bracket to the back of the monitor with the suction of the magnet
- (iv) Mount on dash or windshield which is up to you.



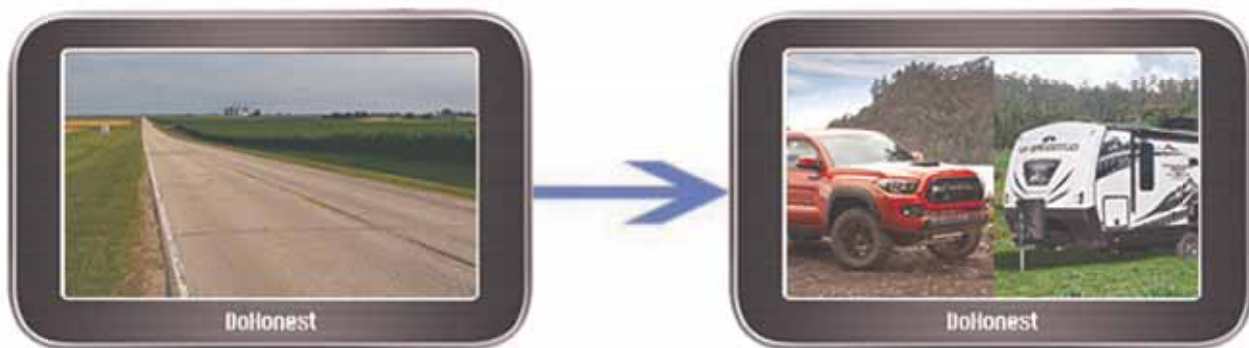
Note: The monitor screen has a protective film. If you don't want it, you can tear off the protective film. Or you can keep it without tearing.

13: Monitor Button



1) **Up (+)**: Press to increase and press it can switch channels quickly.

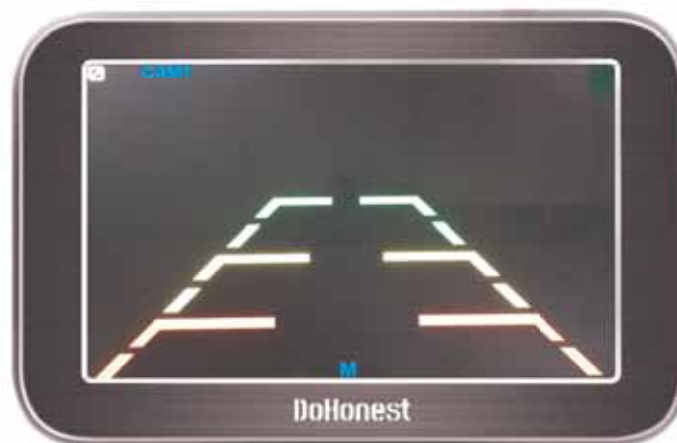
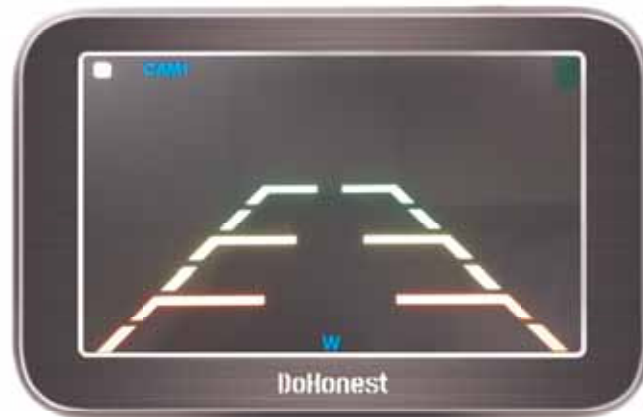
Single/Split Screen: The default is CAM1. Press the **+** key once to switch to CAM2, and press the **+** key twice switch to the split screen.



2) **Menu** : Press this to enter the menu mode (**To enter the menu page, you must switch to a single screen**)

3) **Down (-)** : Press to reduce, turn on /off guide lines, and DIY guide lines.

You can adjust the height and width of guide line, and move the guide line left and right.



Guide Lines ON/OFF:

The default guide line is on. Click the - key four times to turn off.

BACKUP LINES OPTION



Backup lines off



Backup lines on

14: Product function introduction:

When you press the Menu button, you will enter the Menu mode and see 4 icon with functions :



Note :

1. press + or - key can switch function icon
2. Press Menu key for enter or confirm change

1) First icon Pairing :

Step 1 : Make sure the camera and monitor are powered .

Step 2 : When you choose **Pairing**, the icon is yellow, press the M button to enter pairing mode. The icon "Pairing Start" appear,

Then Waiting for the image appearing . (About 20 seconds)



2) Second icon “Picture”

For setting brightness, contrast and saturation

When you choose 2nd icon “Picture” became yellow, Press the “M” button , you can see the brightness, contrast and saturation icon. and press + or - button choose icon you want to adjust and press “M” to choose it. When the selected icon turns red, you can press + or - to adjust the data.



3) Third icon MIR-Flip :

When you choose 3rd icon MIR-Flip became yellow, Press the “M” button to enter it. Then you can press + or - to switch from mirror Rear View image, Normal front view image, vertical flip image. (4 options)



4) Setting:

Note: When you press **M** key enter this mode, Just press **+** or **-** to switch different functions icon. Then press **M** key again to **select** it (became **red icon**), then you can press **+** and **-** to adjust the data.

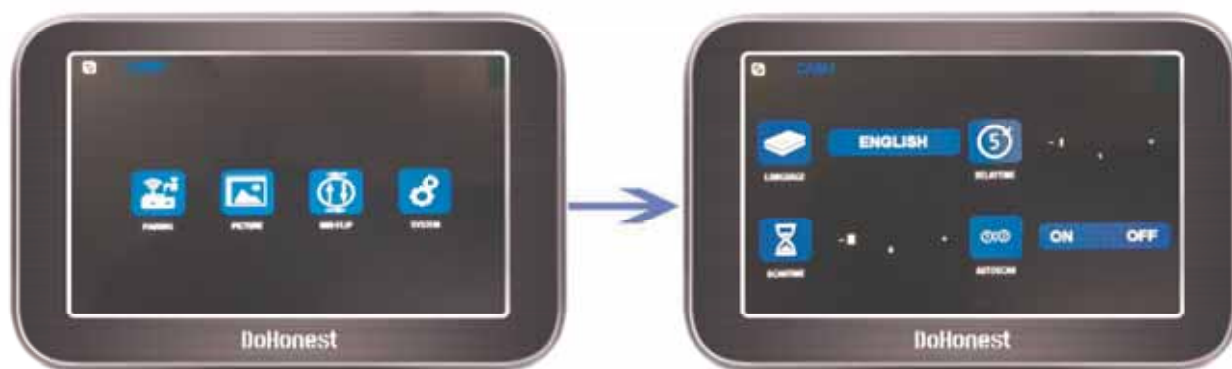
After you done, Press **M** key **quit** current mode.

Switch Language

I. **DELAYTIME** (This functions is useless)

II. **SCANTIME** (Set time for scan time for each camera channel)

III. **Automatic channel switching ON/OFF** (If this function is ON, the CAM1 and CAM2 will switchable automatically, SCANTIME will set for scan time for each camera. You can set it for OFF ignore this functions).



Note: When the yellow font "Scan" appears on the screen, it means that the function already exists, and CAM1 and CAM2 will automatically switch.

15: The function of the Camera Extension Wire

(1) The White Wire

The camera comes with 7 LED light will automatically lit on at dark to enhance the night vision,if you this it is dazzling.You can cut the thin **white** wire from the extension of the camera,then the 7 LED light will turn off.

16: IP69K Waterproof



17: Troubleshooting:

1) After installation, you turn on the monitor and camera power without images, at the same time, the monitor turns on for five seconds and then goes black, which means something wrong with the camera. You need to check that the camera is plugged in correctly. If the camera's power cord is not connected correctly to the headlights, there is no images. Or you can touch the camera with your hand, if the camera gets hot, it's powered on; if the camera surface temperature does not change, it is not connected to the power. Then, you need to reconnect to the power.

2) If the positive and negative poles are reversed, it may cause the no images and please correct the positive wire and negative wire asap. Please

don't judge the positive wire or negative wire with the color of wires, You should search it on internet or asking the professional person or use the tools to confirm it.

Or the no images issue caused by the touch connections of the T-Taps, please check and remove the T-Taps to hardwired them to the car light wire.

3) If you find the image flashing all the time after you install this system. Please try to turn off the engine and keep the key in ACC, if the image does not flicker and the image starts to flicker after starting the engine, you need to add [12V DC Power Adapter Filter Rectifier](#) to keep signal stable. (VW,Dodge,Audi,BMW,Mercedes cars will repel foreign devices and emit interfering currents.)

4) If you connect the camera to the headlights, and your headlights are LED, it will not work. Because the LED light cannot provide a constant direct current to the camera, you need to connect another power source to power the camera.

[18: Two Years Quality Warranty](#)

Two years quality warranty and lifetime tech support. Please contact us if you meet any issues.



No matter what problems you have, please contact us and you will get a
professional help.

Email address: vf@rearcamera.store

Thank you!

FCC Warning Statement

Changes or modifications not expressly approved by the party responsible for compliance could void the user's authority to operate the equipment. This equipment has been tested and found to comply with the limits for a Class B digital device, pursuant to Part 15 of the FCC Rules. These limits are designed to provide reasonable protection against harmful interference in a residential installation. This equipment generates uses and can radiate radio frequency energy and, if not installed and used in accordance with the instructions, may cause harmful interference to radio communications. However, there is no guarantee that interference will not occur in a particular installation. If this equipment does cause harmful interference to radio or television reception, which can be determined by turning the equipment off and on, the user is encouraged to try to correct the interference by one or more of the following measures:

- - Reorient or relocate the receiving antenna.
- - Increase the separation between the equipment and receiver.
- - Connect the equipment into an outlet on a circuit different from that to which the receiver is connected.
- - Consult the dealer or an experienced radio/TV technician for help.

This device complies with part 15 of the FCC Rules. Operation is subject to the following two conditions: (1) This device may not cause harmful interference, and (2) this device must accept any interference received, including interference that may cause undesired operation.

RF Exposure Statement

To maintain compliance with FCC's RF Exposure guidelines, This equipment should be installed and operated with minimum distance of 20cm the radiator your body. This device and its antenna(s) must not be co-located or operation in conjunction with any other antenna or transmitter.