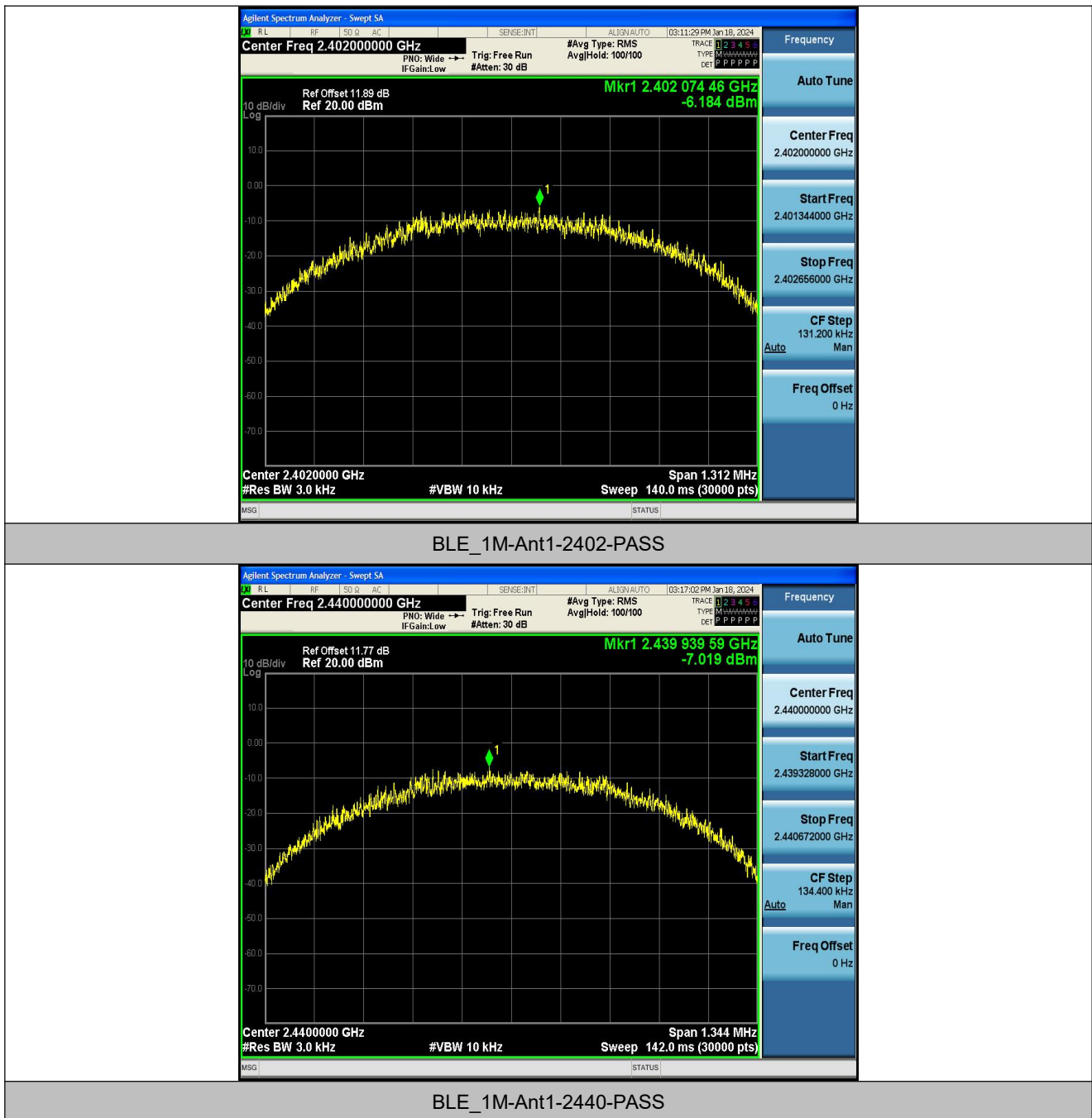


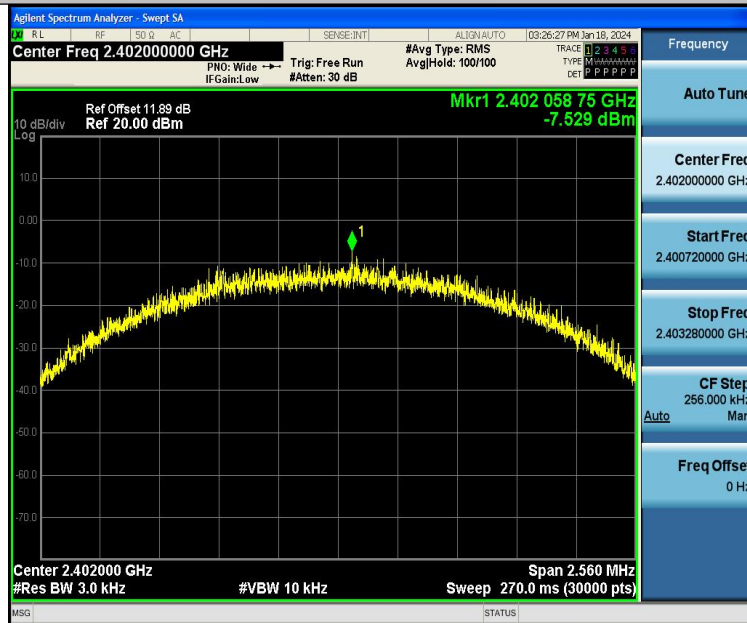


Test Graphs:





BLE_1M-Ant1-2480-PASS



BLE_2M-Ant1-2402-PASS



BLE_2M-Ant1-2440-PASS



BLE_2M-Ant1-2480-PASS



11 Antenna Application

11.1 Antenna Requirement

For intentional device, according to FCC 47 CFR Section 15.203, an intentional radiator shall be designed to ensure that no antenna other than that furnished by the responsible party shall be used with the device. And according to FCC 47 CFR Section 15.247 (b), if transmitting antennas of directional gain greater than 6dBi are used, the power shall be reduced by the amount in dB that the directional gain of the antenna exceeds 6dBi.

11.2 Result

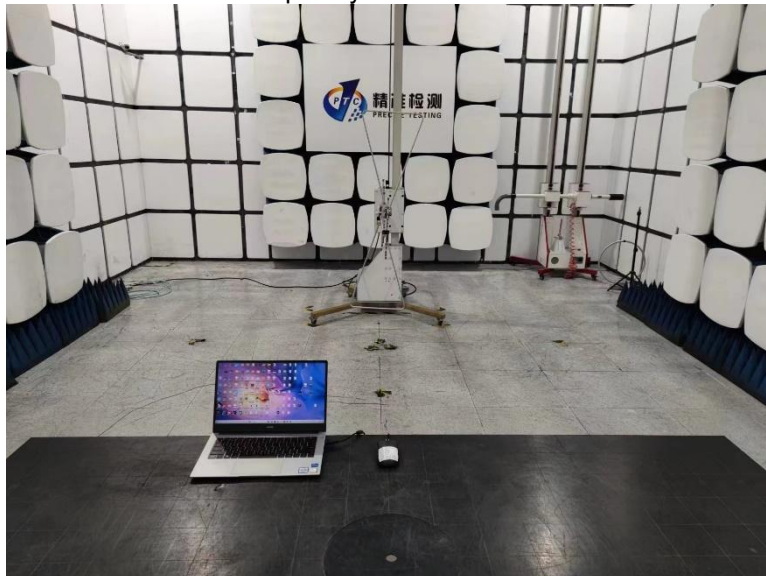
The EUT'S antenna, permanent attached antenna, is internal PCB antenna. The antenna's gain is 4.97 dBi and meets the requirement.

12 Test Setup

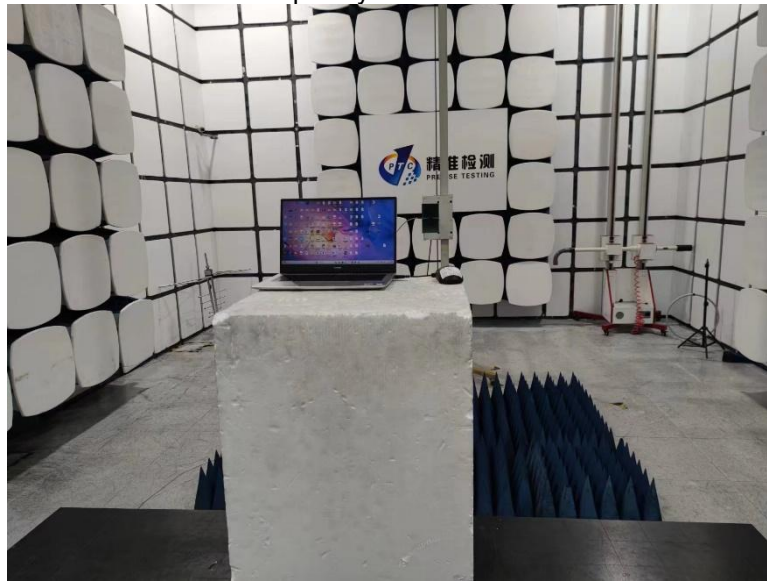
Conducted Emissions



Radiated Spurious Emissions
Test Frequency From Below 30MHz

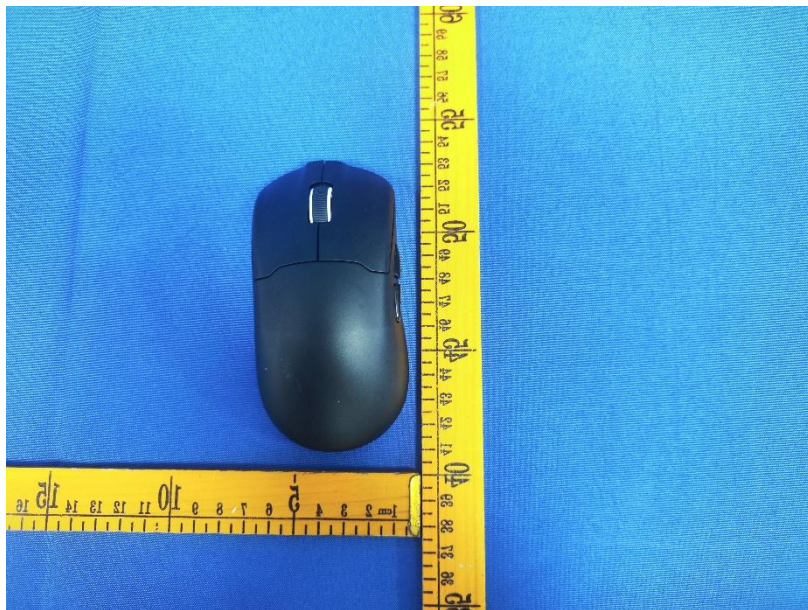


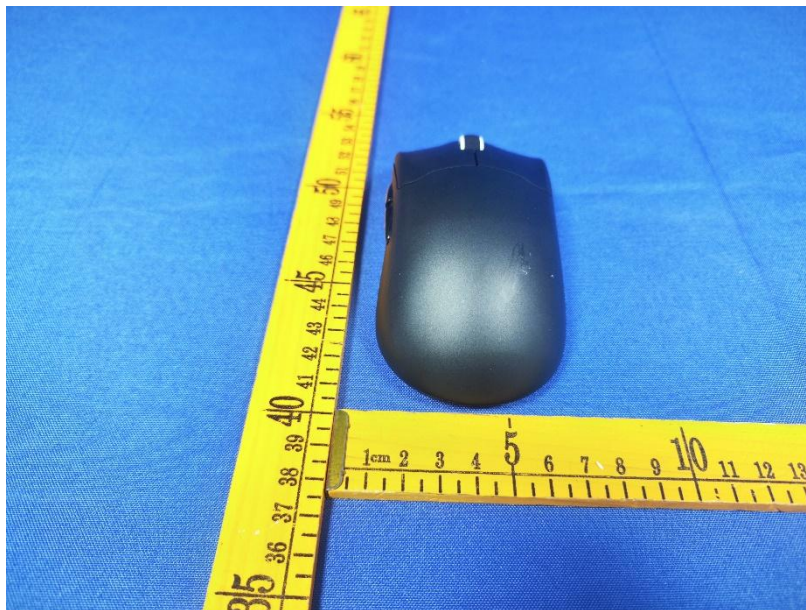
Test frequency from Above 1GHz





13 EUT Photos

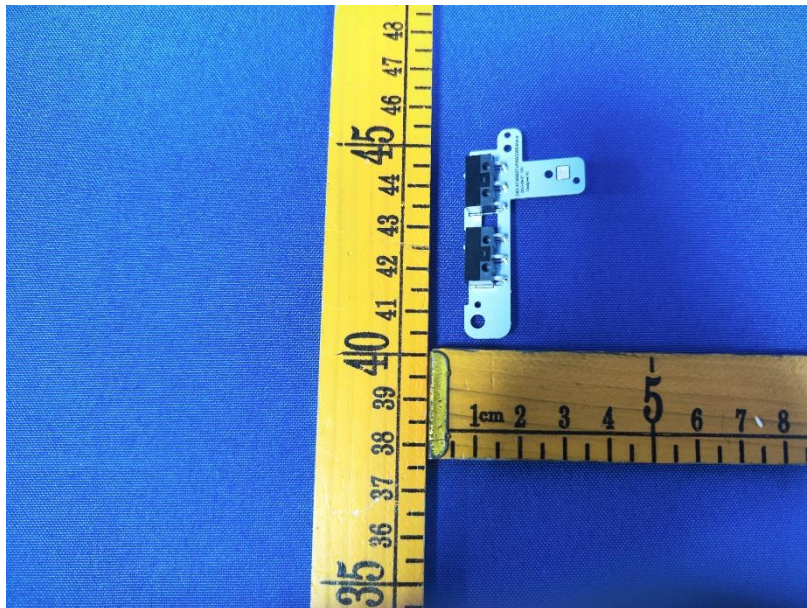
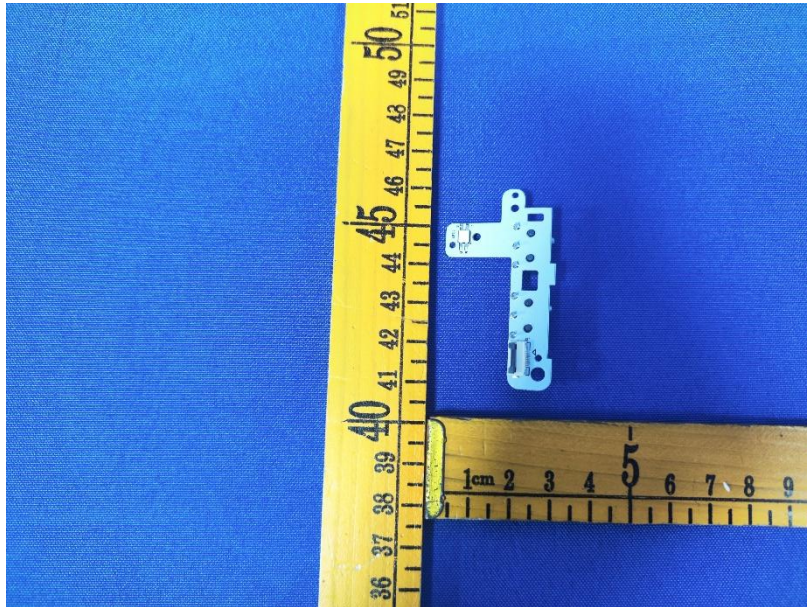


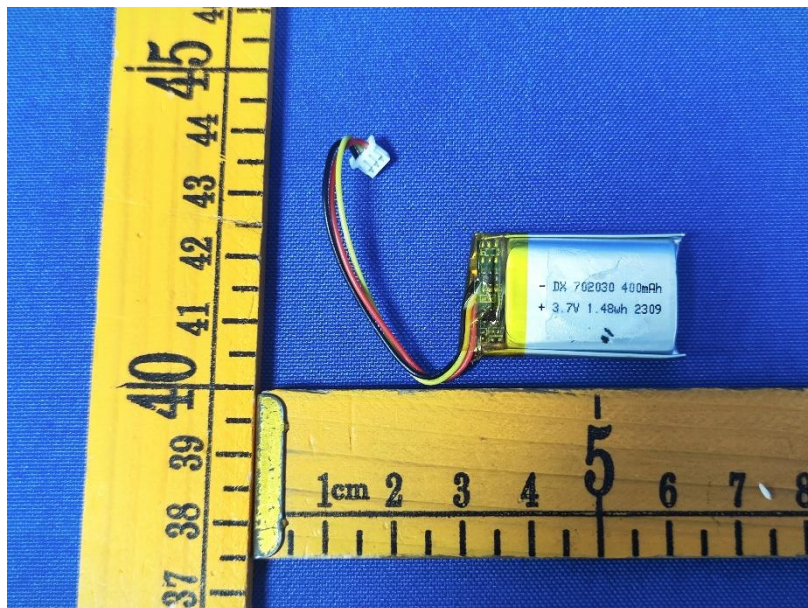
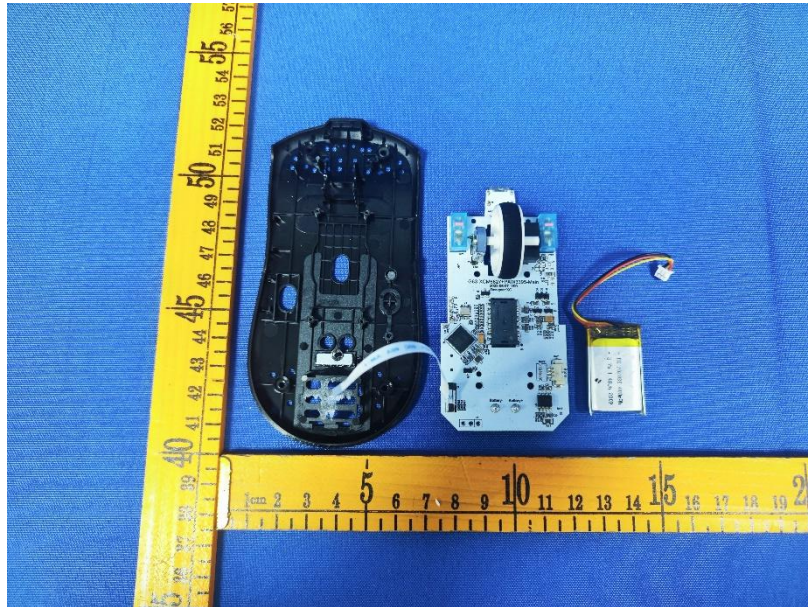


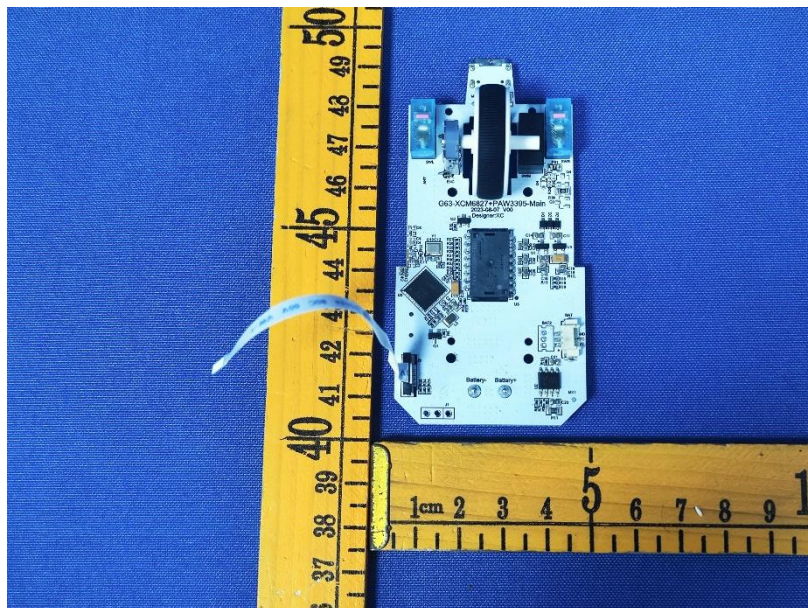
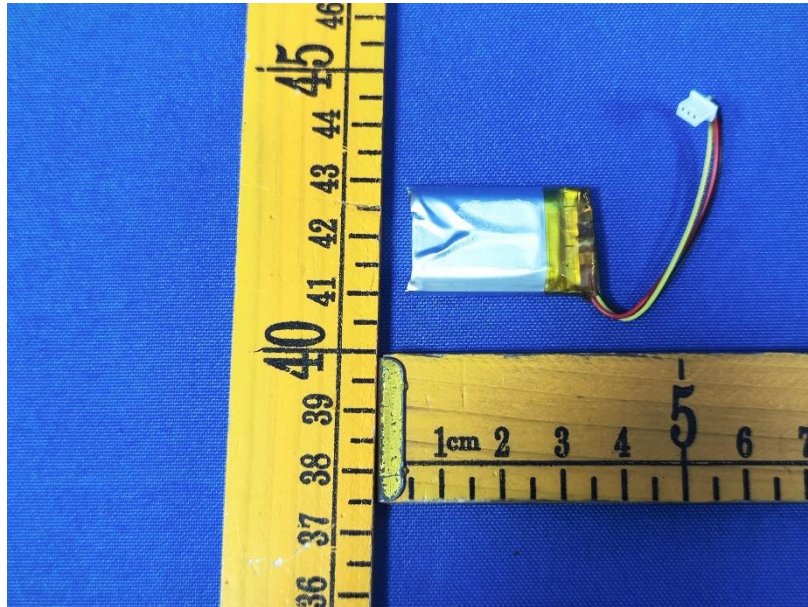


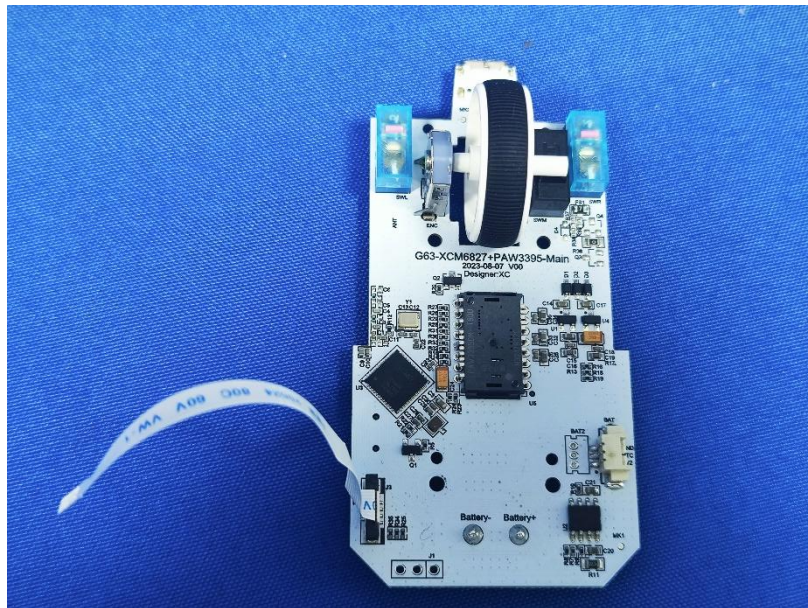
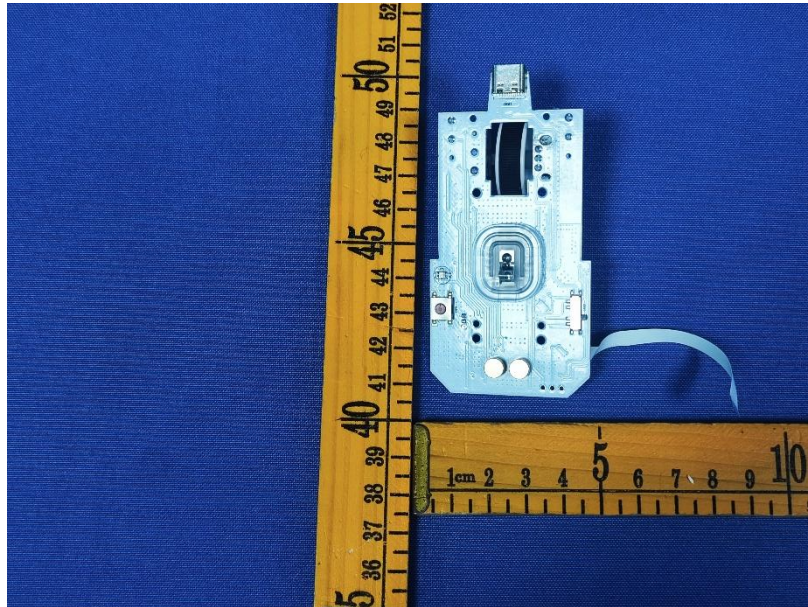


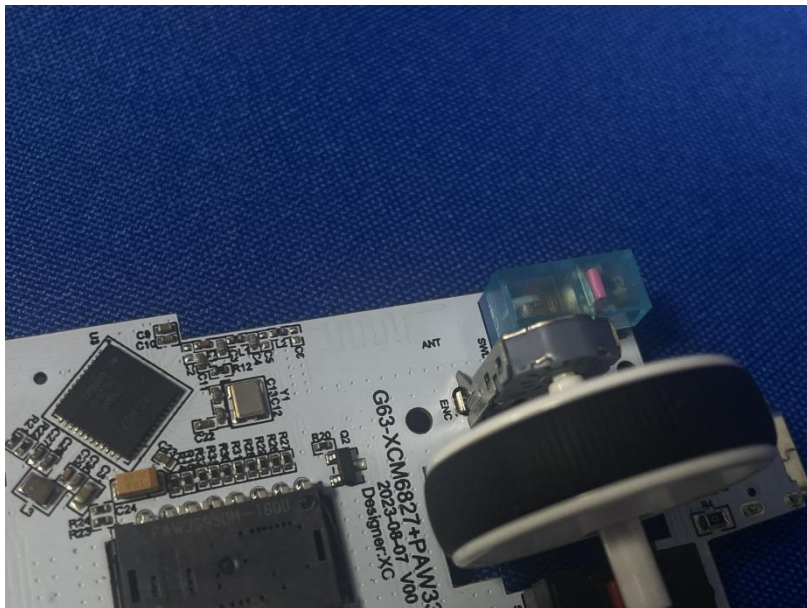
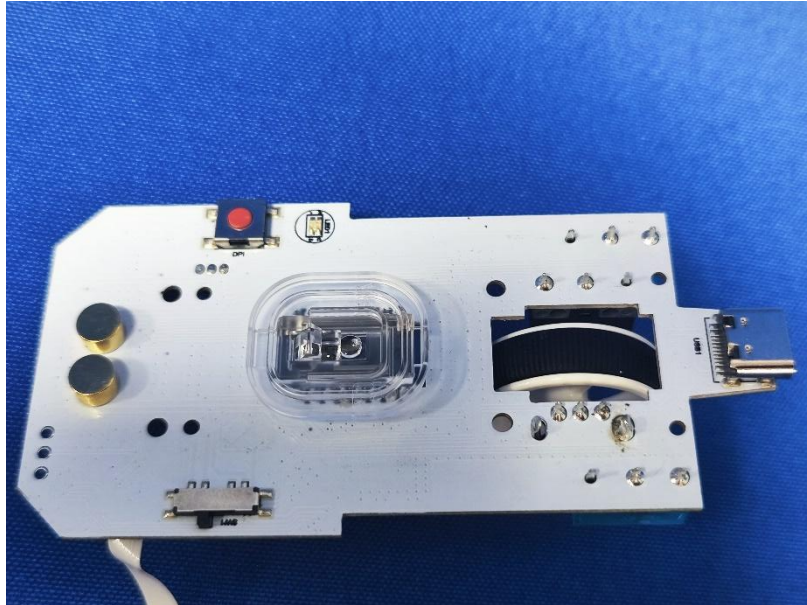












*****THE END REPORT*****