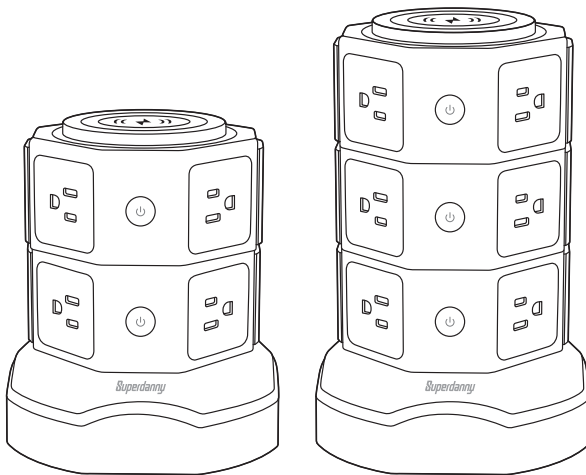




## SURGE-PROTECTED POWER TOWER

with Wireless Charger  
and USB Ports

### User Manual



Thank you for purchasing this surge-protected power tower with wireless charger and USB ports. Please read this user manual carefully before using the product and keep it for future reference. Failing to comply with the instructions and warnings herein may damage the power tower and connected devices, cause electric shocks and possible electrical fires, for which you shall assume all the responsibilities.

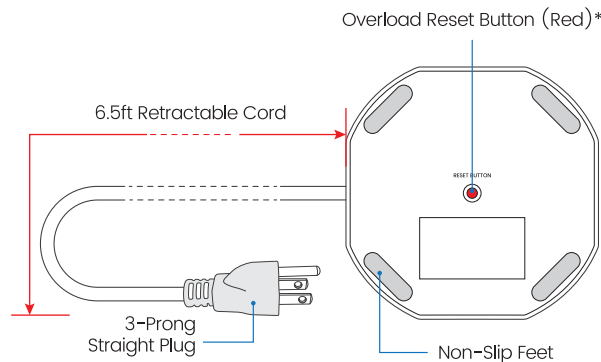
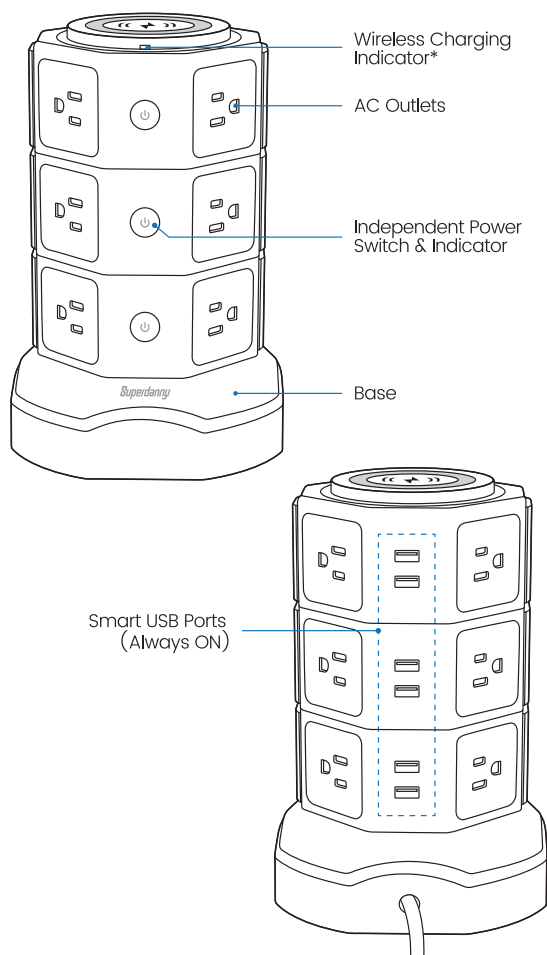
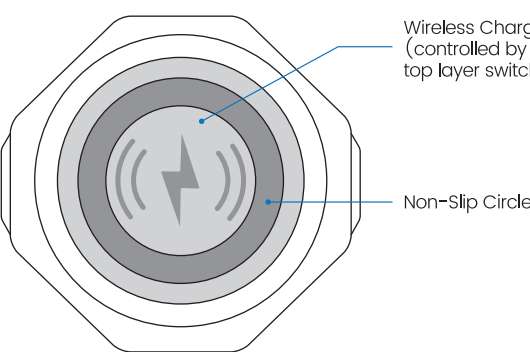
We are constantly working at building a better living with the products and services we create. Should you ever experience any issues with your new product, please feel free to contact our helpful customer service team by sending us a buyer-seller message.

### PACKAGE INCLUDING

- 1 Power Tower
- 1 User Manual

### PRODUCT DIAGRAM

(Taking the 3-layer for example)



#### \*Note:

1. iPhone 12 and other Qi-enabled models with Alignment magnet feature can be attached on the wireless charger.
2. Please check the INDICATOR STATUS for wireless charging indication.
3. The overload reset button pops up to be flush with the tower bottom when the power tower is overloaded ( $\geq 13A$ ). Please unplug all connected devices and wait a few minutes, then press it down to reset the power tower.

### SPECIFICATIONS

AC Input/Output	110~240V, 50 / 60Hz, Max 13A
Rated Power	1625W (110~125V) / 3120W (220~240V)
USB Output	5V/0~2.4A Each Port; 2-Layer: 4 USBs, Max 3.4A / 17W Shared 3-Layer: 6 USBs, Max 4.8A / 24W Shared
Wireless Charging Output	15W
Surge Protection Joules	1050J
Cord	6.5ft
Casing Material	Polycarbonate (PC)
Cable Material	Copper, Polyvinyl Chloride (PVC)
Fire-Retardant Rating	UL94 V-0, 1382°F
Certifications	FCC, RoHS

#### \*Note:

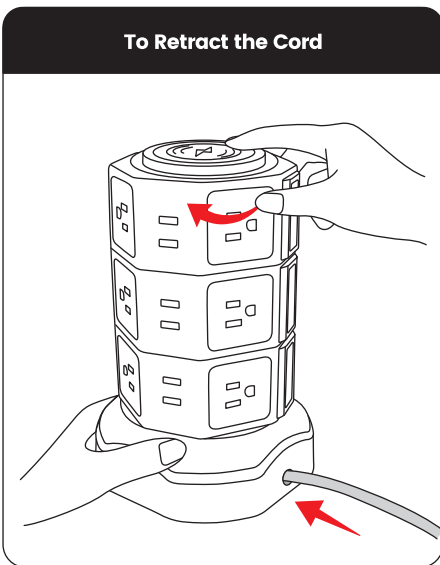
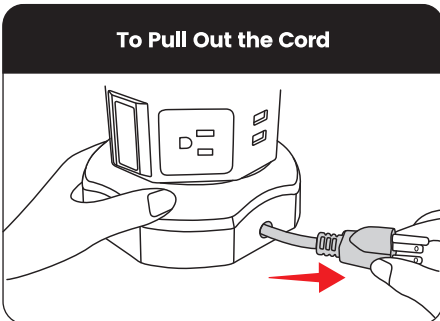
The rated power of this tower is 1625W (13x125=1625) under US/CA voltage (110V~125V). If this power tower is used in other countries and regions with proper plug adapters, its rated power may vary according to the local voltage (e.g. 2860W/220V, 3120W/240V).

### WARNINGS

- **DO NOT** use the power tower in wet or humid places or operate it with wet hands. Doing so may lead to an electrical shock and/or even electrical fires.
- **DO NOT** use the power tower near fire or any heat-emitting appliances like oil/electric heaters.
- **DO NOT** overload the power tower's AC outlets. Their rated power is 1625W under US/CA voltage (110V~125V), please check the combined wattage of the appliances before plugging them into the AC outlets.
- **DO NOT** overload the power tower's USB ports. When the connected devices are drawing more than the maximum output from all the USB ports, they will stop working temporarily. Unplug all the overloading devices and wait a few minutes to restore all the USB ports.
- It is **NOT** suggested to plug high power appliances such as microwave ovens, hair driers, toasters, or space/water heaters into the power tower. They should be connected to a wall outlet instead.
- The Wireless charger would inevitably has temperature raise, which is normal and within acceptable range that would not harm the devices or the wireless charger.
- It is suggested to take off your phone/tablet cases before putting your Qi-enabled devices on the wireless charger and stop running any apps while charging. Doing so may effectively reduce temperature raise on your devices and the wireless charger.
- **ALWAYS** make sure the power plugs of your devices and that of the power tower are completely plugged into to prevent a possible electric shock/arc.

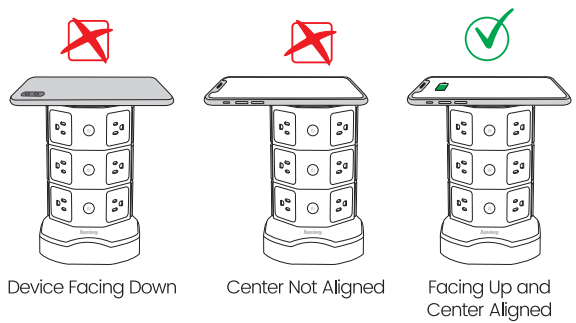
- Lighting strikes may discharge massive amount of surges to the power grid, to prevent the power strip's surge protection joules (1050J) from depleting quickly, we suggest you unplug the power tower during a lightning storm if it is possible, otherwise the power tower may 'sacrifice' itself to protect your devices.
- **DO NOT** use the power tower in enclosed spaces. Doing so may cause a rapid temperature raise and damage the unit.
- **DO NOT** leave heating appliances plugged into the power tower without being attended to.
- **DO NOT** connect this power tower to another power tower, or vice versa. All power towers should be connected to the wall outlets directly.
- **DO NOT** cover the power tower with anything or use it on the bed.
- **ALWAYS** keep the power tower away from babies and children.
- **DO NOT** use power towers as a substitute for permanent wiring—they are for temporary use only. If you are relying too much on power towers, we suggest you have more wall outlets installed.
- **ALWAYS** check the power tower for wear and external damages. Replace power towers regularly as per local electrical safety regulations.
- **DO NOT** try to disassemble the power tower. Doing so may void any warranty automatically. If you need technical support, please contact our helpful customer service team.

### SETUP & OPERATION



- Place the power tower on a solid flat surface, and plug the power cord into a 3-wire grounded wall outlet with an output voltage in the range of 110V~240V.
- Press the independent power buttons down with a clear "click" sound for the layer that needs power, the blue indicators inside the button lights up accordingly.
- Plug the appliances in the AC outlets and/or plug the electronics into the USB ports. Make sure they will not overload the power tower's AC outlets or USB ports.
- Place your Qi-enabled devices facing up on the wireless charger and press down the top independent switch that controls the wireless charger. Make sure their centers are aligned. Slightly adjust the device's position until the wireless charging starts and the wireless charging indicator turns green from red.

**Note:** If Charging does not occur, adjust the phone so its receiver can be detected. Please note that different model phones have their receivers in different positions.



- Unplug your devices or turn off the power buttons when they are not in use for a long time.

#### Notes:

- Do not connect the power tower to an un-grounded wall outlet.
- Plugging & unplugging the devices with their own switches turned off could effectively reduce sparking.
- To find out whether your phone or tablet is compatible with wireless charging, please refer to its website or user manual, or contact our helpful customer service by sending us a buyer-seller message.
- Unplug the power tower and the connected devices before you pull out or retract the cord.

### INDICATOR STATUS

	Red	Green	Blinking Red
Wireless Charging Indicator	Wireless Charger Power ON	Charging	Metal Interference Detected

### TROUBLESHOOTING

PROBLEM	POSSIBLE CAUSE	SOLUTION
No power, indicators don't light up when power buttons are pressed down	Bad connection Power tower overloaded (red reset button pops up to be flush with the bottom)	Check and reconnect to a live wall outlet Unplug all devices and wait a few minutes, press down the red overload reset button

Wireless charging fails	Metal interference detected (indicator blinks red)	Remove the metal objects including metal phone case
	Device not Qi-enabled	Charge to cable charging instead
	Wireless charger damaged (indicator off)	Contact customer service for support if it is within 1-year warranty
	Wireless charger switch not turned on	Turn on top layer switch that controls wireless charger
USB ports not working or charging slow	Single device requiring more current than 2.4A from a single port	Put phone face up with the center aligned with that of the wireless charger, slightly adjust its position
	Multiple devices requiring higher current than 3.4A/4.8A	Unplug and relocate device(s) to AC outlets with their own adapter(s)
Some AC outlets not working	Independent switch not turned on	Turn on the corresponding switch that controls this layer
Hard to plug in cords	New outlets are designed tight to prolong their service life	Hold the tower and wiggle in the plugs

**Note:** If the above troubleshooting does not solve the listed/unlisted problems, please feel free to contact our helpful customer service at [service@aracky.com](mailto:service@aracky.com) or by sending us a buyer-seller message.

### WARRANTY

We back our products with a free **1-year** warranty. If there is something wrong with the product you purchase under normal use, please contact us within the warranty period for a solution.

**Note: accidental or intentional damage is not included in the warranty coverage.**

### ABOUT US

As one of ARACKY's core sub-brands, SUPERDANNY is dedicated to providing intelligent, universal, and high-speed charging equipment around the world. We satisfy consumers various needs for power connection while helping you save space at home and in the workplace.



FCC statement:

This device complies with Part 15 of the FCC rules. Operation is subject to the following two conditions: 1) this device may not cause harmful interference, and 2) this device must accept any interference received, including interference that may cause undesired operation.

Note: This equipment has been tested and found to comply with the limits for a Class B digital device, pursuant to part 15 of the FCC Rules. These limits are designed to provide reasonable protection against harmful interference in a residential installation.

This equipment generates uses and can radiate radio frequency energy and, if not installed and used in accordance with the instructions, may cause harmful interference to radio communications. However, there is no guarantee that interference will not occur in particular installation. If this equipment does cause harmful interference to radio or television reception, which can be determined by turning the equipment off and on, the user is encouraged to try to correct the interference by one or more of the following measures:

- Reorient or relocate the receiving antenna.
- Increase the separation between the equipment and receiver.
- Connect the equipment into an outlet on a circuit different from that to which the receiver is connected.
- Consult the dealer or an experienced radio/TV technician for help.

Changes or modifications not expressly approved by the party responsible for compliance could void the user's authority to operate the equipment.

Radiation Exposure Statement

This device complies with FCC RF radiation exposure limits set forth for an uncontrolled environment. This transmitter must not be co-located or operating in conjunction with any other antenna or transmitter. During the operation of device a distance of 15 cm surrounding the device and 20 cm above the top surface of the device must be respected.