



User instruction for led strip light

Thank you for buying this product . To provide an excellent user experience, please install it according to these instructions and then give the instructions to appropriate person for rerention and future reference.

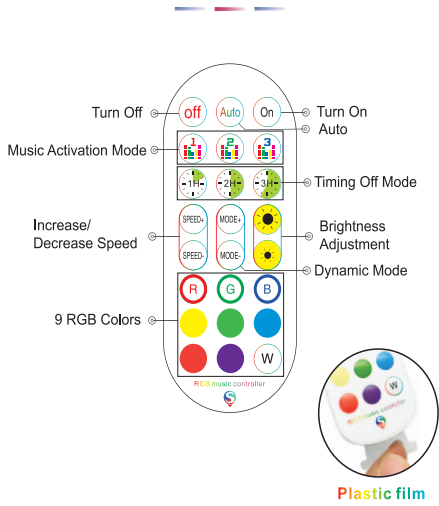
Precautions :

Please make sure the surface is flat smooth and clean before sticking the strip light on the wall.
Please don not light the strip on for over 5s when they are rolled on the plastic axle.
Please check the led strip carefully before installation.
Please ensure the power is off befor wiring and insrallation.
The product led light belt is 5v voltage , please pay attention to the voltage when increasing the power supply.

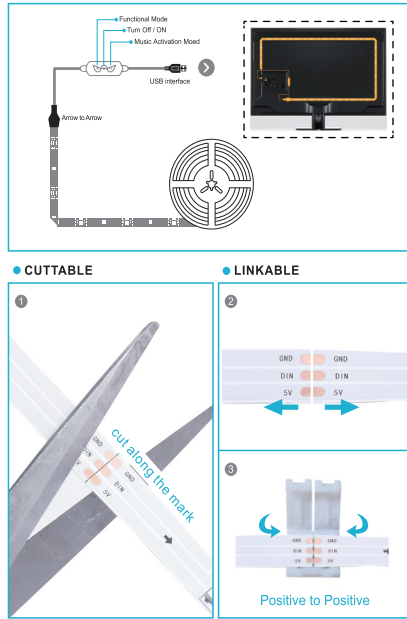
FAQ

1. Can led strip lights stick to any surface?
NO, please make sure the surface is flat, smooth and clean, before sticking the led strip light on the wall.
We recommend sticking led strip light to asingle surface
2. How many times can led strip light stick to a new surface ?
3. Are led strip light waterproof ?
No, our light strips are mainly suitable for indoor environments.
Note: the ir controller driver , they are not waterproof.
4. Can led strip lights be plugged directly into the mains.
No, As led strip light are 5V Volt, they can not be plugged directly into the mains.
Led strip lights will last up to 40000 hours or around 14 years based on 8 hours is usage perday.
- 5.Can you cut led strip lights?
YES,just be sure to cut where clearly marked.

Music Remote(Advanced Version)



Cutting & Connectors Application:



LED Strip lights installation instructions

1. Prepare all the required accessories before connecting and wiring . if lack something please make another order of accessories.
 2. Tear off the covering of led strip lights.
 3. Stick up the adhesive strip onto where you want to use it .
 4. Nsert the USB cable into the USB interface and note that the voltage is 5V.
- Installation is very simple.

LED Striplights DIY

How to cut the LED Strip

1. Please cut the LED strip through the lines marked on it.
2. The 5V low voltage LED strip can be cut in every 1LEDs

Instructions for use of led controller

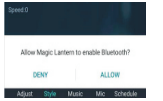
Ios and android systems can download the app by scanning the QR code. open the browser or other tools with"scan QR code"function,scan the QR code as below:
app download
scan the QR code



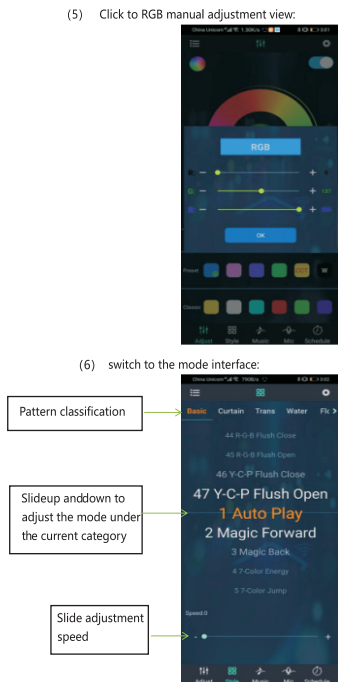
App operation

Click DuoCol StripX on the lotuslantern app icon,enter the app page.

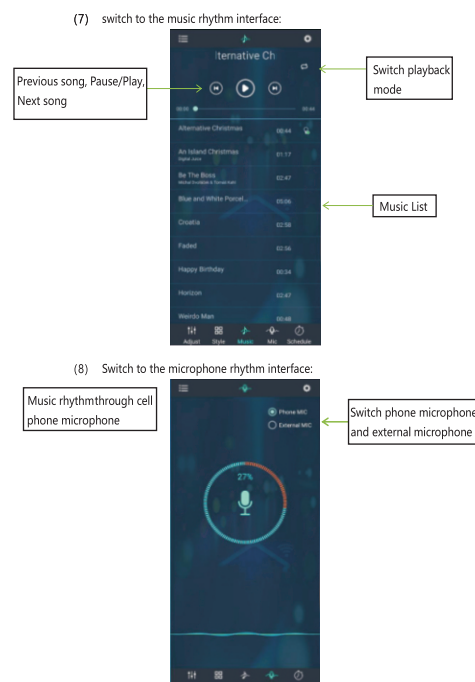
After entering the App interface,if bluetooth is not enabled ,an application wants to enable the bluetooth function of this device click allow



6



7

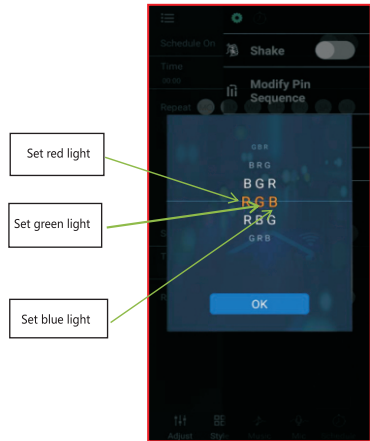


8



9

(10) Switch to the modify pin sequence interface:



10

WARNING

- ★ DO NOT IMMERSE IN FIRE
- ★ CHILDREN UNDER THE AGE OF 16 SHOULD USE THIS PRODUCT UNDER ADULT SUPERVISION.

If you have any question after receiving the products, please contact our customer service, we will reply to you within 24 hours.



FCC Warning

15.19 Labeling requirements.
This device complies with part 15 of the FCC Rules. Operation is subject to the following two conditions:
(1) This device may not cause harmful interference, and (2) this device must accept any interference received, including interference that may cause undesired operation.

15.21 Information to user.
Any Changes or modifications not expressly approved by the party responsible for compliance could void the user's authority to operate the equipment.

15.105 Information to the user.
Note: This equipment has been tested and found to comply with the limits for a Class B digital device, pursuant to part 15 of the FCC Rules. These limits are designed to provide reasonable protection against harmful interference in a residential installation. This equipment generates uses and can radiate radio frequency energy and, if not installed and used in accordance with the instructions, may cause harmful interference to radio communications. However, there is no guarantee that interference will not occur in a particular installation. If this equipment does cause harmful interference to radio or television reception, which can be determined by turning the equipment off

and on, the user is encouraged to try to correct the interference by one or more of the following measures:
-Reorient or relocate the receiving antenna.
-Increase the separation between the equipment and receiver.
-Connect the equipment into an outlet on a circuit different from that to which the receiver is connected.
-Consult the dealer or an experienced radio/TV technician for help.

FCC RF Radiation Exposure Statement:
1.This Transmitter must not be co-located or operating in conjunction with any other antenna or transmitter.
2.This equipment complies with RF radiation exposure limits set forth for an uncontrolled environment.
This equipment should be installed and operated with minimum distance 5mm between the radiator and your body.