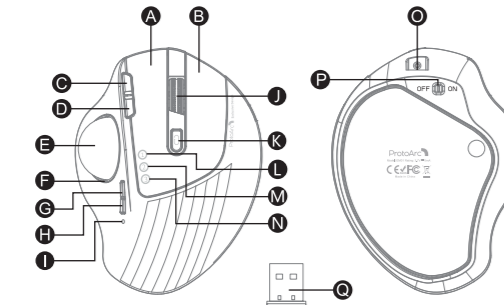


User Manual

2.4G+Bluetooth+Bluetooth Wireless Rechargeable RGB Trackball Mouse

EM01

Product Features

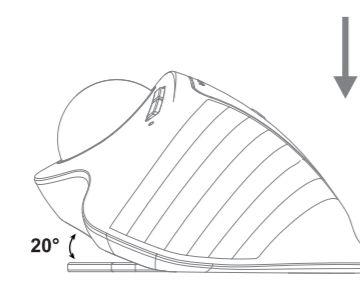
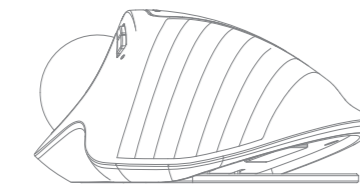


- A Left Button
- B Right Button
- C Forward Button
- D Backward Button
- E Trackball
- F Led Rim Light
- G Light Switch Button
- H DPI Button
- I Charging / DPI Indicator
- J Scroll Wheel
- K Switch Device Button
- L 2.4G Indicator
- M Wireless 1 Indicator
- N Wireless 2 Indicator
- O TYPE-C Charging Port
- P Power Switch
- Q USB Receiver

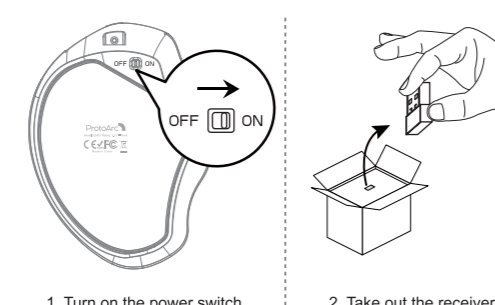
Light switch button: Press lightly to switch lights, long press for three seconds to turn off the light effect.

Light mode: 1. Streamer mode (Default) 2. Breathing mode
3. Mixed color breathing mode 4. Neon mode

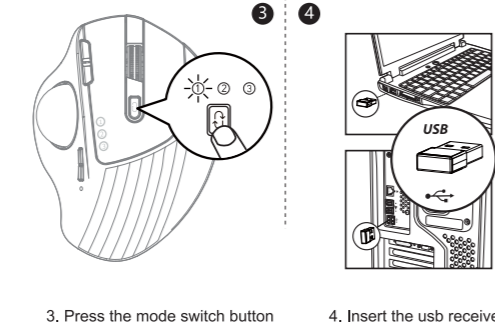
Adjustable mouse grip angle



2.4G USB Connection

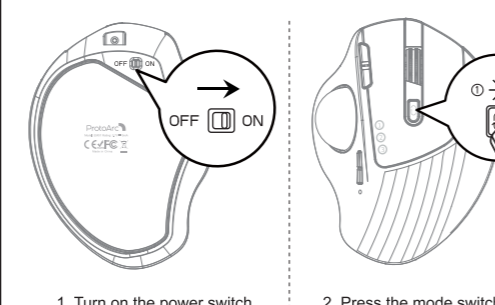


1. Turn on the power switch to ON.
2. Take out the receiver.

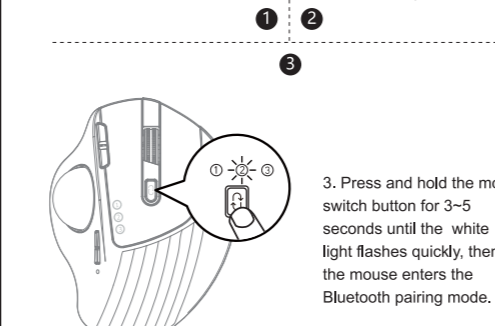


3. Press the mode switch button until the white light is on and enter 2.4G mode.
4. Insert the usb receiver into your computer's usb port.

Bluetooth Connection

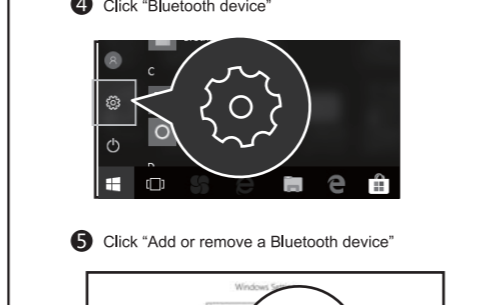


1. Turn on the power switch to ON.
2. Press the mode switch button and switch to Bluetooth mode, the white light flashes slowly.



3. Press and hold the mode switch button for 3-5 seconds until the white light flashes quickly, then the mouse enters the Bluetooth pairing mode.

Windows 10 System

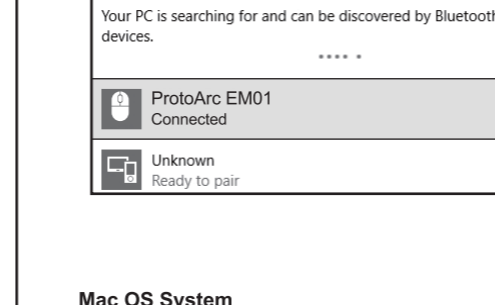


1. Click "Bluetooth device"
2. Click "Add or remove a Bluetooth device"

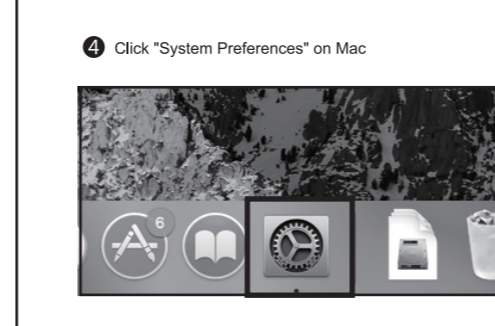


3. Your computer will automatically search for "ProtoArc EM01" and then click "pair"

Mac OS System

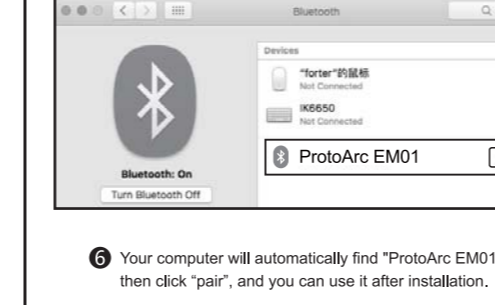


1. Click "System Preferences" on Mac

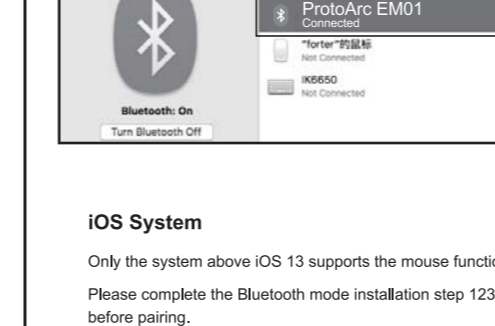


2. * ProtoArc EM01* is connected and can be used normally

iOS System

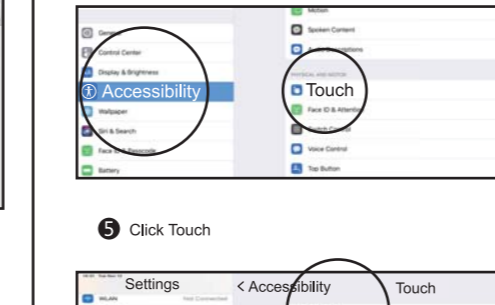


1. Click "Bluetooth" in "System Preferences"

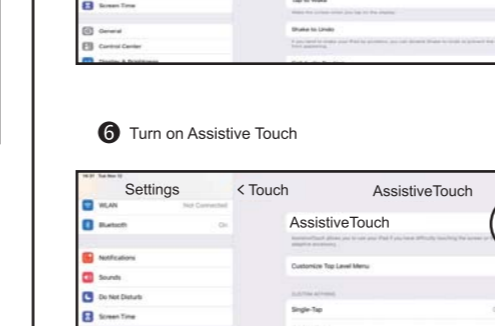


2. Your computer will automatically find "ProtoArc EM01", then click "pair", and you can use it after installation.

iOS System

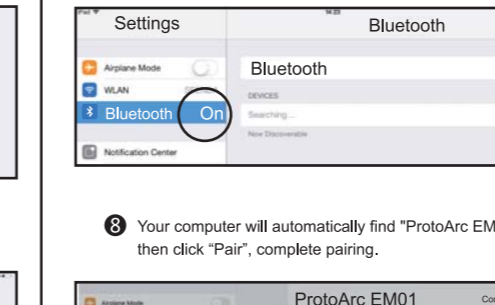


3. Click "Bluetooth" in "System Preferences"

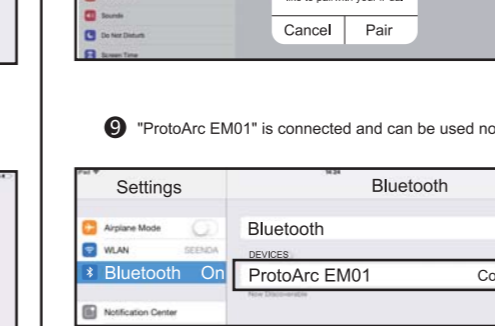


4. Click Settings on your device, then turn on Accessibility

Android System

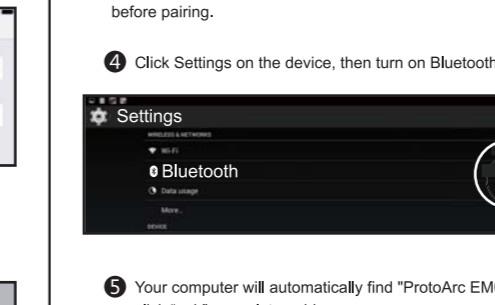


5. Click Settings on your device, then turn on Accessibility
6. Click Touch

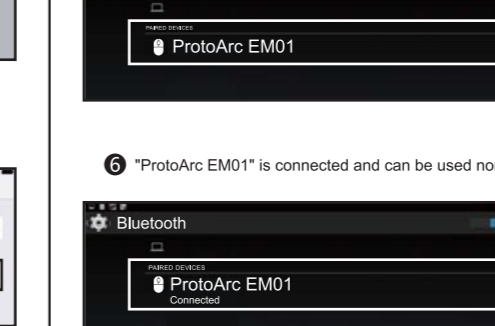


7. Turn on Assistive Touch

Android System

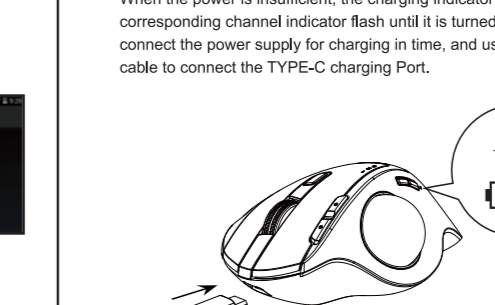


7. Click Settings on the device, then turn on Bluetooth

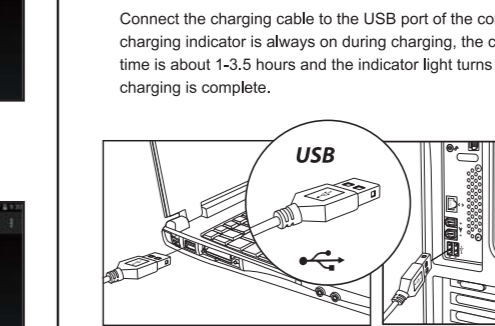


8. Your computer will automatically find "ProtoArc EM01", then click "Pair", complete pairing.

Android System

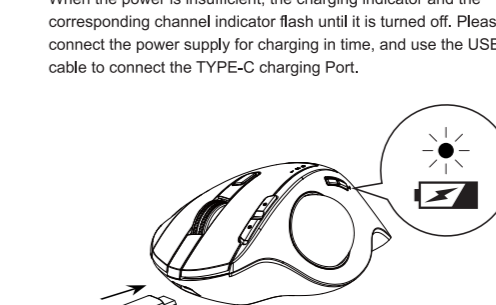


9. Your computer will automatically find "ProtoArc EM01", then click "pair", complete pairing.

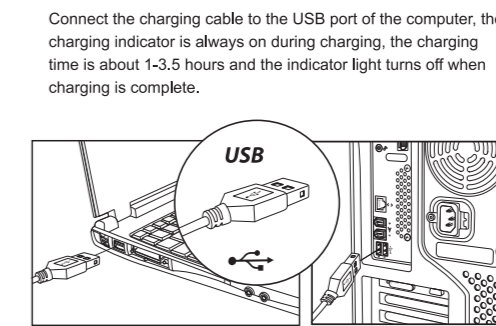


10. "ProtoArc EM01" is connected and can be used normally

Charging Function Guide

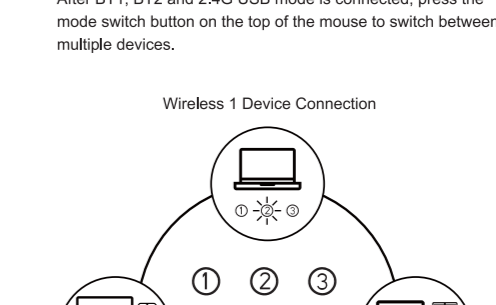


When the power is insufficient, the charging indicator and the corresponding channel indicator flash until it is turned off. Please connect the power supply for charging in time, and use the USB cable to connect the TYPE-C charging Port.



Connect the charging cable to the USB port of the computer, the charging indicator is always on during charging, the charging time is about 1-3.5 hours and the indicator light turns off when charging is complete.

How to switch connection mode



After BT1, BT2 and 2.4G USB mode is connected, press the mode switch button on the top of the mouse to switch between multiple devices.

Press the mode switch button on the top of the mouse to switch between 3 devices

Data parameters

Basic parameter:
Chip: Nordic NRF51802W
Movement Detection Technology: Optical
Lithium battery Capacity: 900mAh
DPI: 1000-1600-2400
Click life: 3 million+
Dimension: 133*101*51mm
Weight: 190g

Bluetooth transmission parameters:
Transmission distance: 10m
Working Voltage: 3.7V
Working current: 4mA
Reaction rate: 125Hz

System requirement:
Bluetooth-enabled device
Windows 8, Windows 10 or higher version
Mac OS 10.10 or higher version
Android 4.3 or higher version

2.4G transmission parameters:
Transmission distance: 20m
Working Voltage: 3.7V
Working current: 5.5mA
Reaction rate: 250Hz

System requirement:
An available USB port
Windows XP, Windows 7, Windows 8, Windows 10 or higher version
Mac OS 10.10 or higher version

What's in Package

- ▶ 1 x Wireless Mouse
- ▶ 1 x USB Receiver
- ▶ 1 x Type C Charging Cable
- ▶ 1 x User Manual

FCC Warning

This device complies with Part 15 of the FCC Rules. Operation is subject to the following two conditions:

(1) This device may not cause harmful interference, and (2) this device must accept any interference received, including interference that may cause undesired operation.

NOTE 1: This equipment has been tested and found to comply with the limits for a Class B digital device, pursuant to part 15 of the FCC Rules. These limits are designed to provide reasonable protection against harmful interference in a residential installation. This equipment generates uses and can radiate radio frequency energy and, if not installed and used in accordance with the instructions, may cause harmful interference to radio communications. However, there is no guarantee that interference will not occur in a particular installation. If this equipment does cause harmful interference to radio or television reception, which can be determined by turning the equipment off and on, the user is encouraged to try to correct the interference by one or more of the following measures:

- Reorient or relocate the receiving antenna.
- Increase the separation between the equipment and receiver.
- Connect the equipment into an outlet on a circuit different from that to which the receiver is connected.
- Consult the dealer or an experienced radio/TV technician for help.

NOTE 2: Any changes or modifications to this unit not expressly approved by the party responsible for compliance could void the user's authority to operate the equipment.