

SMART DOOR KNOB

Installation and User Guide

Required tools ( not included )

Ruler

Phillips head screwdriver

Hammer

Chisel

What's in the box

If the lock appears to be damaged or missing parts, Please contact customer service by email for further assistance.

Interior Assembly(A)

Exterior Assembly

Interior Assembly(B)

Pin(C)

4 pcs AAA batteries

Latch Bolt(D)

Connect the screws of the rear lock fixing post ( H )

Latch Screws ( I )

Backup Key ( G )

Strike plate(F)

Plastic box(E)

Parts List

<b>A</b> Exterior Assembly	<b>B</b> Interior Assembly	<b>C</b> Pin	<b>D</b> Latch Bolt	<b>E</b> Plastic box
<b>F</b> Strike Plate	<b>G</b> Backup Key	<b>H</b> Connect the screws of the rear lock fixing post	<b>I</b> Latch and Strike Screws	

1.Remove existing deadbolt

⚠

① Don't discard the old lock hardware until the lock has been successfully installed.

② Remove the lock from the door, including the old latch.

2.Prepare the door and check dimensions

Measure length of the basket

Measure diameter of the 2 holes

Measure depth of the door frame's hole

Confirm dimensions

3.Install the latch and strike plate

A. Check backset and adjust the latch

**YES**

No adjustment is required. Proceed to next step.

**NO**

Slotted hole is NOT centered. Rotate and pull the latch as shown to extend the latch. Proceed to next step.

2-3/8" 60mm

2-3/4" 70mm

B. Install the latch

1

must be chiseled

2

Latch Screws

3

C. Install the strike plate

4. Identify left/right hand door

Left opening direction: Hinge is on the LEFT

Right opening direction: Hinge is on the RIGHT

Installation instructions

① Don't insert the key to the cylinder when installing the deadbolt!!!

② Battery:

a. Use new and **NON**-rechargeable 4 AAA batteries for the best use.

b. Don't load batteries until the lock is completely installed.

③ Adjust latch to insert horizontally.

If you have any problems, don't hesitate to contact with us through customer service at the first time.

⚠

Before installing the lock, please check door jame and door preparation.

Simple flowchart of installation

Please refer to the next section if you need a more detailed installation process.

**1**

**2**

**3**

**4**

**5**

**6**

**7**

**8**

**9**

**10**

**11**

**12**

5.The deadlock button instructions

Deadlock button ON:

Setting via lock: Under locking state, shortly press the deadlock button.

Deadlock button OFF:

1) Shortly press the deadlock button to turn it off;

2) Unlock via APP to turn it off

3) Unlock the door once by using the Administrator code or Administrator fingerprint.

Restore Factory settings:

1) Setting via lock:

Step 1. Remove the battery.

Step 2. Re-put on the 4 AAA batteries, long press the "Deadlock button" until you hear the voice guiding.

Step 3: Press "111" to confirm initialization and then you'll hear the voice guiding "operation successful".

2) Setting via APP: Remove the device from the APP.

★ Passage Mode :( the passage mode can turn off automatic locking )

• This feature is optional and can be turned off. (Under automatic with lock unlocking, press 123+√ to set passage mode on. Press 123+√, green light flashes with voice prompt successful)

Warranty

Lifetime Limited Mechanical and Finish Warranty and 1-Year Limited Electronics Warranty Subject to the terms and conditions of the warranty, We extend a lifetime limited mechanical and finish warranty and a one-year limited electronics warranty to the original consumer user ("Original User") of our brand product against defects in material and workmanship, as long as the original User occupies the residential premises upon which the product was originally installed.

FCC Statement

This device complies with part 15 of the FCC Rules. Operation is subject to the following two conditions: (1) This device may not cause harmful interference, and (2) this device must accept any interference received, including interference that may cause undesired operation. This equipment has been tested and found to comply with the limits for a Class B digital device, pursuant to part 15 of the FCC Rules. These limits are designed to provide reasonable protection against harmful interference in a residential installation. This equipment generates, uses and can radiate radio frequency energy and, if not installed and used in accordance with the instructions, may cause harmful interference to radio communications. However, there is no guarantee that interference will not occur in a particular installation. If this equipment does cause harmful interference to radio or television reception, which can be determined by turning the equipment off and on, the user is encouraged to try to correct the interference by one or more of the following measures:

• Reorient or relocate the receiving antenna.

• Increase the separation between the equipment and receiver.

• Connect the equipment into an outlet on a circuit different from that to which the receiver is connected.

• Consult the dealer or an experienced radio/TV technician for help.

Caution: Any changes or modifications to this device not explicitly approved by manufacturer could void your authority to operate this equipment.

RF Exposure Information

The device has been evaluated to meet general RF exposure requirement. The device can be used in portable exposure condition without restriction.



6.Setting definitions

Settings	Default Setting	Definitions
Programming Code	123456	<ul style="list-style-type: none"><li>It's required to change it to a code of your own before programming</li><li>In manual mode, press the “↵” button to lock.</li><li>6~9 digits in length, must differ from all the user codes exists currently.</li><li>If you forget the master passcode, you can do initialization setting, which restores the default programming code.</li></ul>
Auto Lock	Abled by default	<ul style="list-style-type: none"><li>This feature is optional and can be turned off.</li><li>When enabled,the lock will automatically re-lock after 5/10/20/30/60 seconds.</li><li>After a successful code entry or manual unlock with the key ,the lock will automatically re-lock after each unlock to keep your home security.</li></ul>
Manually Lock ✓	Long press “↵” button for 3s to lock	<ul style="list-style-type: none"><li>If auto-lock is not enabled, you need to do the locking manually.</li></ul>
Mute Mode	Disable	<ul style="list-style-type: none"><li>The voice guiding of lock &amp; unlock as well the beep sounds while pressing the keypad can be mute, but you can still hear the voice guiding while do setting process.</li></ul>
Privacy Button	Disable	<ul style="list-style-type: none"><li>Privacy mode is disabled by default.</li><li>When enabled, activate Privacy mode by pressing the privacy button, shortly press to put the lock in do-not-disturb mode ( All Entry Codes are disabled except the programming code ).</li></ul>
Wrong Code Entry Limit	Enabled	<ul style="list-style-type: none"><li>Once the wrong code entry limit (5 attempts) has been met, the lock will shutdown (flashing RED) for sixty (60) seconds.</li></ul>
Peek-proof digital keypad	Enabled	<ul style="list-style-type: none"><li>Prevent code exposure strangers by entering random digits.</li></ul> <div>Max in 16 digit at l engt h</div> <div><div>1 2 3 1 2 3 4 5 6 1 2 3</div><div>— Password —</div><div>— Random digits —</div></div>
User Code	Disable	<ul style="list-style-type: none"><li>The lock comes out without any default User Codes.</li><li>Must be different from the master code and other user codes.</li><li>Up to 100 possible User Codes can be stored in the lock at one time</li></ul>

7.Troubleshooting

**Motor turns but will not extend or retrieve the deadbolt.**

- Make sure the key is not in the lockset when installing the deadbolt. Refer to installation instructions.
- Make sure the backset on the latch is set to the proper length. Refer to installation instructions.

**Why does my lock only work properly when the backup key is in?**Why am I unable to pull the key out in the unlocked position?

- You may need to re-install the whole lock.
- Please do not put the backup key in the lock when install.
- Please make sure when you start to install, the lock is in unlocked status.
- Please make sure the thumb turn is horizontal.

**Fail to programming the lock.**

- Before installation, restore the lock to complete the bolt direction setting.
- Please make sure the lock is installed correctly.
- Please install fresh batteries and make sure the cable is connected correctly.

**The battery indicator keeps flashing.**

- The batteries are getting low. Please replace with 4 AAA new batteries for the best performance( Alkaline batteries, do not use recharge batteries ).

**Keypad not responding.**

- Make sure the batteries are installed properly.
- The batteries are getting low if the battery indicator keeps flashing.
- Please replace with 4 new batteries for the best performance( Alkaline batteries, do not use rechargebatteries ).
- Make sure the cable is well-connected to the port, and was not damaged during installation.
- Make sure the lock has been set up and complete the bolt direction determination.

**Forgot master code/Default programming code is incorrect.**

Remove the battery.Re-put on the 4 AAA batteries, long press the "Deadlock button" until you hear the voice guiding.Press "111" to confirm initialization and then you'll hear the voice guiding "operation successful".

**Lockset is not able to unlock/lock by keypad.**

- Make sure you have entered the correct User Code.
- The battery is low if the battery indicator light keeps flashing. Please replace it with 4 new batteries.
- Make sure the cable is firmly connected.
- Check the cable for any damage that may have occurred during installation.
- Make sure the batteries are properly installed ( Alkaline batteries, do not recharge batteries ).
- Check the strike plate to make sure it is properly aligned and clear so the bolt can freely move in the hole.

3. Setting Finger p r int

The first fingerprint you set is the Admin Fingerprint.

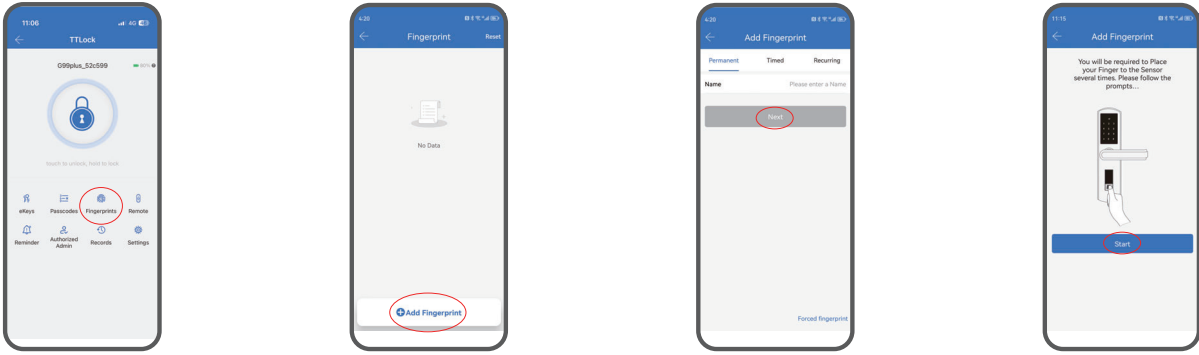
Step 1: Tap“ Fingerprints”

Step 2: Add Fingerprint.

Step 3: Name the fingerprint.

Step 4: The lock will remind you to place your finger on the sensor 5 times

Step 5: input successful.



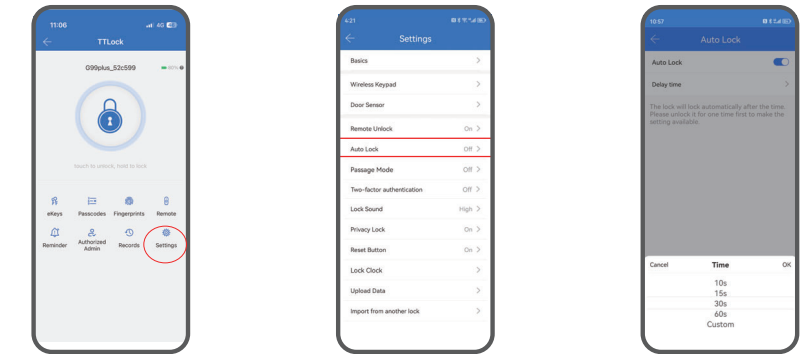
For the lock to better recognize your fingerprints:

- Make sure the fingerprint sensor and your finger are clean and dry.
- Place your finger on the fingerprint sensor. Move your finger around to capture different parts of it.

5. Autolock

Step 1:Tap" Settings" ,then tap Auto lock.

Step 2: when "Auto Lock“ is on, the lock will automatically lock after 5 to 60 seconds, or you can customize the interval from 1-900 seconds.

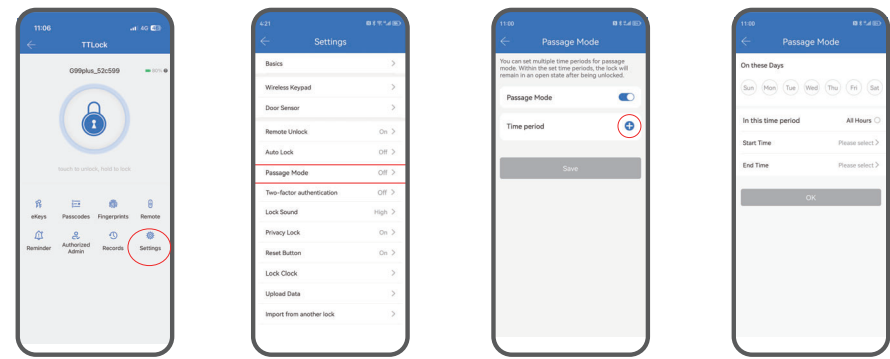


Note:Unlock the door once to get the mode activated.

6. Passage Mode

Step 1:Tap" Settings" , then tap Passage Mode.

Step 2: Choose the days and time this function works.



Note: 1.When the "passage mode" function is enabled,the door remains unlocked and the“ Auto lock” function is disabled.

2.Unlock the door once to get the mode activated.

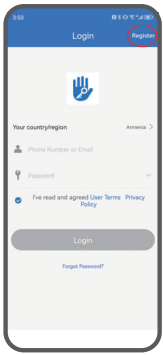
App Operation Guide

We recommend using app because it's easier to set and more convenient for future use.

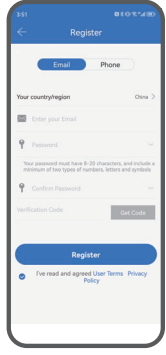
1.Create an Account

Android: Search " Next lock "or " TTlock " in Google Play.

iOS: Search " Next lock " or " TTlock " in the App store.



Tap Register to continue



Choose your Email or Phonenumber as your app account

2. Pair Your Phone with the Smart lock

Step1: Press any fingerprint to wake up the lock,you will hear a voice prompt "Please set up yoursmart lock" .If not ,please reset the lock.

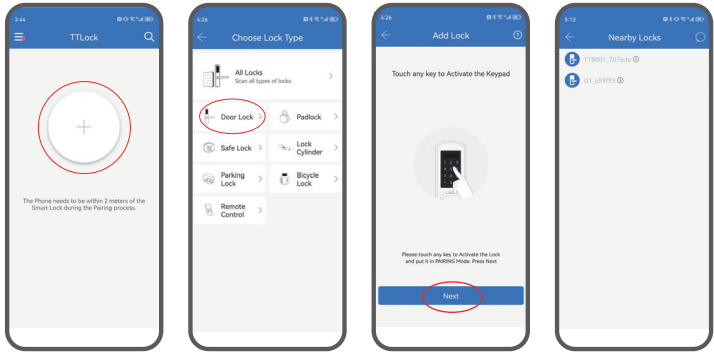
Tap "menu" icon.

Step2: Tap "Door lock".

Step3: Tap “Next” .Press any fingerprint to activate the lock and put it in pairing mode.

Step4: Tap “+” to add lock(s).

Step5:Name your lock then tap " OK " to add lock( s).

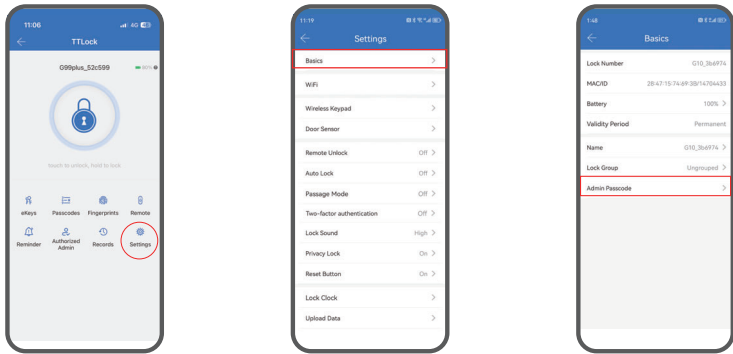


3. Change the Admin Passcode

Once the lock and your phone are paired, the default admin passcode 123456 is invalid.

Check and set a newadmin passcode .

Tap **Settings** on the home page →Basics →Admin Passcode→Enter a 6-9 digit password



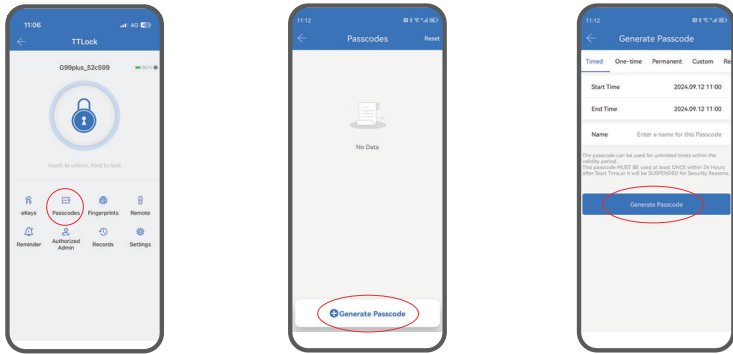
3. Setting Passcodes

Step 1:Tap “Passcodes” .

Step 2: Generate Passcode.

Step 3: Choose the passcode. type and name the passcode.

Except the custom passcodeall passcodes are generatedrandomly.



7. Enabling G2 Gateway ( not included )

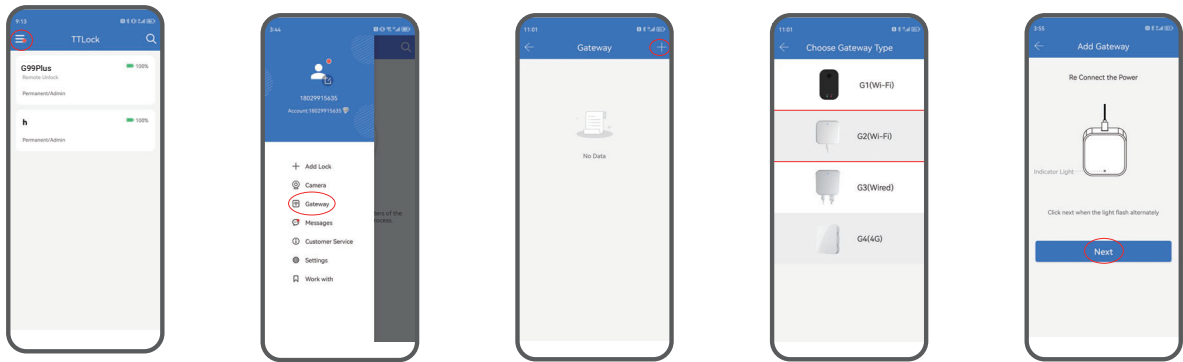
To set up the G2 gateway for remote control,please follow these steps:

1.Plug in the G2 gateway and wait for the indicator to start flashing red and blue alternately.

2.Add the gateway to your App and turn on the remote Unlock function.

Tap Settings on the home page →Remote Unlock→Turn on.

3.Once successfully paired,the gateway indicator will keep flashing blue and a small lock icon will appear on the home page .



Note:1.Only support 2.4GHz WiFi,our G2 gateway enables you to remotely unlockyour door anywhere anytime.

2.To ensure best performance,place the gateway within 5m/16 feet from the smart lock and router.

8. FQA

1、 Why I can't pair my Lock with App?

Step 1: Ensure you have turn on your phone's Bluetooth.

Step 2: Press the fingerprint reader to activate the lock,

Step 3: If you have set the Admin Passcode already,the lock would be absent on the APP. in this case, please press √ + 53 + √ + Admin Passcode,the lock can be paired now.

2.I set a timed eKey/ fingerprint between13:00-17 :00, but it still works at 18:00. Under this circumstance, please calibrate the lock time via Lock Clock.

3.Why the Record Page didn't showall lock/unlock records?

If the records didn't update in a timely manner, you can refresh recordsat up rightnear the lock, You have to connect a gateway, if you want toreceive the records remotely.

4.Why the fingerprint I set on the Lock doesn't showin my App?

In this case, please upload data from lock to App. It may take severalminutes,please be patient.

