



FCC ID: 2A5BCHQV001
IC ID: 27785-TRUEAIR2

MADE IN CHINA



MANUFACTURER

Shenzhen Ginto E-Commerce Co., Limited
Zoom 08 13F, Block b, Hulhai square, Chuangye
road, Longhua street, Longhua Dist., Shenzhen,
CHINA. 518000

support@truefree.com

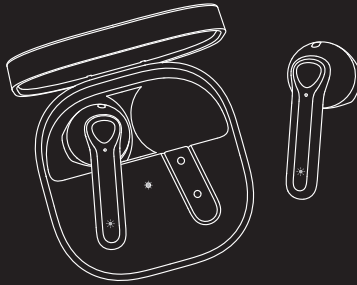
www.truefree.com



Company: Qing UChafungsbeschränkt
Address: Unterdorf 7, 12203 Berlin Germany

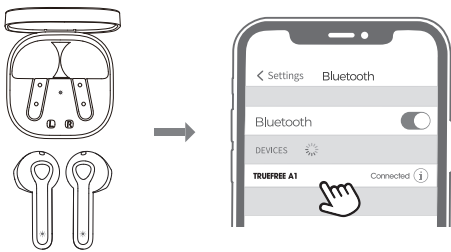


TANMET INTL BUSINESS LTD
9 Parryglaven Road, Portypridd, Mid Glamorgan, CF37 2RUK
tanmetbz@outlook.com



Using Guide | Gebrauchsanleitung | Manual de instrucciones |
Mode d'emploi | Istruzioni per l'uso | 取扱説明ガイド | 说明使用指南

Pairing

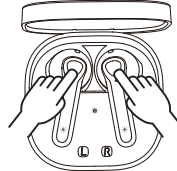


1. The earbuds automatically pair to each other after being taken out from the charging case. Light on main earbud flashes in white and red, the second earbud stays in white.
2. Activate Bluetooth on the device, and choose "TRUEFREE A1" on Bluetooth list to pair.

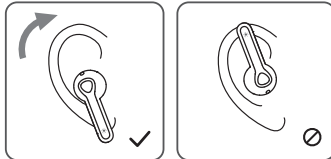
Reset

(Try the following steps if you fail building connection between two earbuds, or between earbuds and device.)

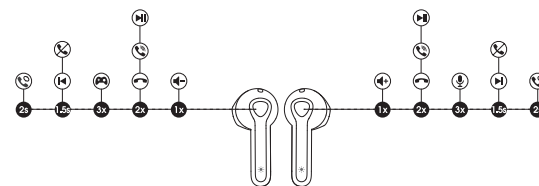
1. Clear the pairing record between the earbuds and all your devices.
2. Place back both earbuds and make sure they are in charging status. Press and hold both MFBs for 10 seconds until both indicators flash white twice.



Wearing



Product Diagram



Button Control

Power On	Auto: Take out from charging case Manually: Press and hold the MFB for 1.5s
Power Off	Auto: Place back into charging case Manually: Press and hold the MFB for 10s
Play / Pause	Double tap the MFB
Volume -	Single tap the left MFB
Volume +	Single tap the right MFB
Previous Track	Press and hold left MFB for 1.5s
Next Track	Press and hold right MFB for 1.5s
Answer / Hang Up Phone Call	Double tap the MFB
Reject Phone Call	Press and hold the MFB for 1.5s
Switch Between Two Calls	Press and hold the MFB for 2s
Manually Enter Pairing Mode	Press and hold the MFB for 6s
Activate Voice Assistant	Triple tap the right MFB
Game Mode	Triple tap the left MFB

Game Mode

TRUEFREE A1 adopts the latest technology to ensure low latency in game mode and make sure the sound sync with the image.
Triple tap on the left MFB to activate the game mode with a voice prompt "Game Mode" and deactivate the mode with a prompt "Exit Game Mode".

Q&A

Q1: What does the charging LED tell while charging the case?

The LED stays on while charging, and turns off after fully charged.



Q2: What does the LED inside the charging case tell?

The LED flashes slowly while charging the case.
Red light Less than 20%
Yellow light 20% - 69%
Green light 70%-99%
Green light stays on 100%



Q3: Why are the earbuds still connected to my phone after placing back?

1. The charging case is out of battery. The case will not turn off the earbuds if the case battery is dead.
2. Please make sure the earbuds sit well in the charging case, and the charging contactors on both the earbuds and charging case are clean. If not, please try something like microfiber cloth to clean the contactors.

FCC Statement

This equipment has been tested and found to comply with the limits for a Class B digital device, pursuant to Part 15 of the FCC rules. These limits are designed to provide reasonable protection against harmful interference in a residential installation. This equipment generates uses and can radiate radio frequency energy and, if not installed and used in accordance with the instructions, may cause harmful interference to radio communications. However, there is no guarantee that interference will not occur in a particular installation. If this equipment does cause harmful interference to radio or television reception, which can be determined by turning the equipment off and on, the user is encouraged to try to correct the interference by one or more of the following measures:
- Reorient or relocate the receiving antenna.
- Increase the separation between the equipment and receiver.
- Connect the equipment into an outlet on a circuit different from that to which the receiver is connected.
- Consult the dealer or an experienced radio/TV technician for help.

This device complies with part 15 of the FCC rules. Operation is subject to the following two conditions:
(1) This device may not cause harmful interference.
(2) This device must accept any interference received, including interference that may cause undesired operation.
Changes or modifications not expressly approved by the party responsible for compliance could void the user's authority to operate the equipment.

IC ID

- English: *
This device complies with Industry Canada licence-exempt RSS standard(s). Operation is subject to the following two conditions:
(1) this device may not cause interference, and
(2) this device must accept any interference received, including interference that may cause undesired operation of the device.*

- French: *
Le présent appareil est conforme aux CNR d'Industrie Canada applicables aux appareils radio exempts de licence. L'exploitation est autorisée aux deux conditions suivantes:
(1) l'appareil ne doit pas produire de brouillage, et
(2) l'utilisateur de l'appareil doit accepter tout brouillage radioélectrique subi, même si le brouillage est susceptible d'en compromettre le fonctionnement.*

RF warning statement:
The device has been evaluated to meet general RF exposure requirement. The device can be used in portable exposure condition without restriction.