


Outside 1 (back)

Outside 2 (back)

Outside 3 (back)

Outside 4 (Front)



© 2022 Hygiene IQ, LLC or its Affiliates Hand IQ, and all related marks are trademarks of Hygiene IQ, LLC or its affiliates.

Important product and safety information

FAILURE TO FOLLOW THESE SAFETY INSTRUCTIONS COULD RESULT IN FIRE, ELECTRIC SHOCK OR OTHER INJURY OR DAMAGE.

BATTERY SAFETY

HANDLE WITH CARE. Your Hand IQ Hub device contains a rechargeable lithium-ion (Li-Ion) polymer battery. Do not disassemble or attempt to access the battery in your device. Do not modify or remanufacture the battery, attempt to insert foreign objects into the battery, or immerse or expose it to water or other liquids, expose it to fire, explosion or other hazards. Use of an unqualified battery or charger may present risk of fire, explosion, leakage or other hazard. Your Hand IQ Hub device uses a USB-C power adaptor intended to be used with your Hand IQ Hub device. This power adaptor is intended for indoor use only.

Your Hand IQ Handwash Sensors contain a single disposable 3V coin cell lithium battery (model CR2477). Never charge the battery as it is not designed to be rechargeable, and this may cause leakage or explosion. Battery is operational with its positive side facing upwards and negative side facing into the equipment. Never short circuit, heat, incinerate or dismantle the battery. Caution: Keep away from children and pets.

RECYCLING YOUR DEVICE PROPERLY. In some areas, the disposal of certain electronic devices is regulated. Make sure you dispose of, or recycle, your devices in accordance with local laws and regulations.

TERMS OF USE AND POLICIES. Hand IQ Hub and Hand IQ Smart Sensors are Hygiene IQ Devices. Please read all terms and usage policies, which can be found at www.handiq.com

LIMITED WARRANTY. Your new Hand IQ devices are covered by a one year Limited Warranty. Please read all warranty information, which can be found at www.handiq.com

FAQ and support

Visit: <https://handiq.com/customer-support>

Product specifications and FCC compliance

BDG010 & SSR010 meets the FCC & IC requirements for RF exposure in public or uncontrolled environments

BDG010 & SSR010 Cet appareil est conforme aux conditions de la IC en matière de RF dans des environnements publics ou incontrôlée

Changes or modifications not expressly approved by the party responsible for compliance could void the user's authority to operate the equipment

This equipment has been tested and found to comply with the limits for a Class B digital device, pursuant to part 15 of the FCC Rules. These limits are designed to provide reasonable protection against harmful interference in a residential installation. This equipment generates, uses and can radiate radio frequency energy and, if not installed and used in accordance with the instructions, may cause harmful interference to radio communications. However, there is no guarantee that interference will not occur in a particular installation. If this equipment does cause harmful interference to radio or television reception, which can be determined by turning the equipment off and on, the user is encouraged to try to correct the interference by one or more of the following measures:

- Reorient or relocate the receiving antenna.
- Increase the separation between the equipment and receiver.
- Connect the equipment into an outlet on a circuit different from that to which the receiver is connected.
- Consult the dealer or an experienced radio/TV technician for help.

FCC

This device complies with Part 15 of the FCC Rules and with Industry Canada license-exempt RSS standard(s). Operation is subject to the following two conditions: (1) This device may not cause harmful interference, and (2) This device must accept any interference received, including interference that may cause undesired operation.

Le présent appareil est conforme aux CNR d'Industrie Canada applicables aux appareils radio exempts de licence. L'exploitation est autorisée aux deux conditions suivantes: (1) l'appareil ne doit pas produire de brouillage, et (2) l'appareil doit accepter tout brouillage radioélectrique subi, même si le brouillage est susceptible d'en compromettre le fonctionnement.

The party responsible for FCC compliance is Hygiene IQ, LLC 638 Moulton Ave., Los Angeles, CA 90031 USA. If you wish to contact Hygiene IQ, please visit www.handiq.com/customer-support.

Device Name: Hand IQ Hub Contains FCC ID: 2AC7Z-ESP32WROOM32E



Quick start guide and product information

Need to update to reasonable daily wash count, e.g. 97.

inside 1

inside 2

inside 3

inside 4

Get to know Hand IQ

Handwash Hub

- Battery indicator
- Daily wash activity ring + optional countdown
- Daily wash count
- USB-C Charge Port

Handwash Sensor

- Front of sensor + LED
- Back of sensor + mount plate

Hub Back

- Wall mount
- Power button (under wall mount)

Wall Charger

- USB-C

Hub screen and Handwash Sensor LED indicators

Hub Screen

You want to keep your ring full throughout the day. The daily handwash activity ring is based on the number of people in your shared areas and the handwash goals you set.

Good Handwash goals can be ambitious. When you're in the blue, you're good.

Average Average is not bad, but there are risks associated with not meeting your stated goals.

Below average Red means pick up the pace and encourage more handwashing for the safety of everyone.

Countdown A 20-second timer with handwash prompts helps staff when placed near a dispenser.

Handwash Sensor LEDs

- Blue flicker - Handwash Sensor is unassigned
- Singled blue flash - Handwash Sensor vibration detection activated (pump dispensers)
- Single green flash - Handwash Sensor motion detector activated (touch-free dispensers)

Getting started

Prepare the hardware

- Slide the wall mount behind the hub down and then push the power button
- Unscrew the back of the sensor counter clockwise, then take out the coin cell battery and flip over. You should see a blue LED flicker on the front of the sensor

Download the Hand IQ Mobile App for iOS or Android.

- Log into the Hand IQ Mobile App and choose the location where you will activate the hardware
- *Note - Hand IQ requires a basic subscription. Go to www.handiq.com for pricing
- Choose how frequently you want people to wash hands at your location
- Active your Hub and connect it to Wifi
- Add your handwash sensors

Scan to download the app

Attach your handwash sensors

Begin by removing the double stick tape backing on the handwash sensor mount plate, then follow the instructions below to install it on pump or automatic dispensers. Once the sensors are attached, you can finish setup in the mobile app.

Pump

For pump dispensers place the handwash sensor on the outside or inside of the dispenser. The sensor will pick up the "turning" motion when someone is activating the dispenser.

Automatic

For automatic dispensers, place the sensor right under the dispenser on the wall. The sensor needs to be within a few inches of a hand when activating the dispenser.

Mounting your hub

- Mount the hub in a central area by a wall plug where staff can see it, preferably by a handwash sink. (If near a handwash sensor, it will display a countdown.)
- Remove the wall plate on the back of the hub. You can either use the double stick tape or screw it to the wall.
- Plug your hub in using the provided USB-C charger

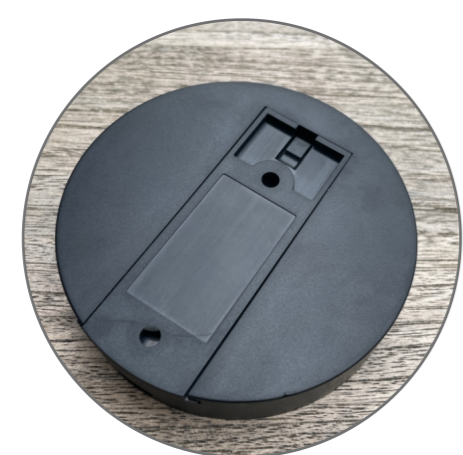
Overall, we're looking for an outline style for the images. The color used is up to the designer, but it should be supported by our colors (i.e. the blue that we use)



Actual cord shape / design (doesn't need to be wrapped this way)

This is cord outline is the style we are going for with all the drawings.

Images of front and back of sensor should not be at an angle UNLESS the designer feels this adds to the overall design. If the designer goes for this, they will need to do the same with the hub.



Actual back of hub w/ wall mount plate inserted. Also, note there is no "beltline" on the circumference like in the original design.

Note the colors above are what we are using for our rings. Blue: #3CB7E8; Yellow: #FDC0F8; Red: #ED5D78

The above QR code is dynamic and will be updated once we have the app on the app store.

Use the same picture from "inside 1" panel to show the mount. Would be cool if it was plugged in.

Note the automatic sensor above - I moved the sensor close underneath. I also removed the soap nosseles to make this work.