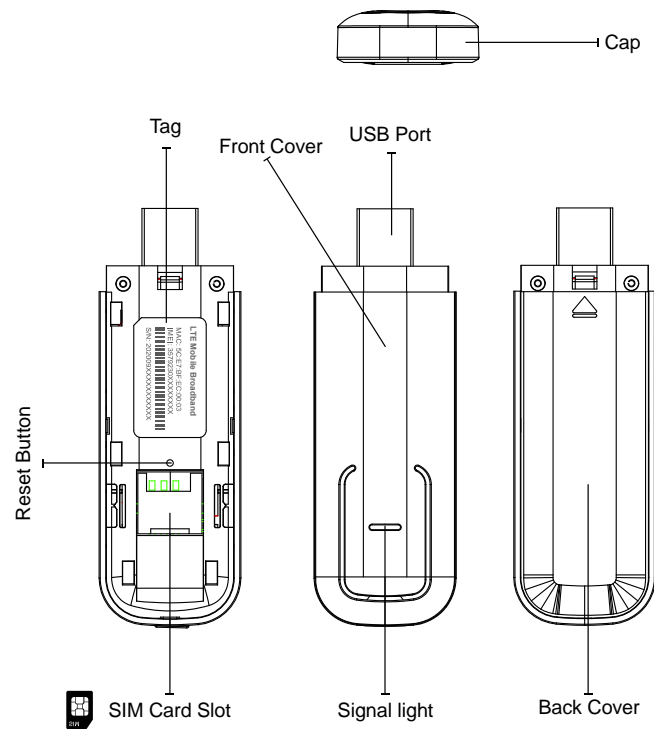


**Quick start Guide**

**4G USB Dongle**

**IH500**

## APPEARANCE AND FUNCTION DESCRIPTION



### Signal Light – Display network status

**SIM card slot** – Supports SIM/USIM card

**Reset Button** – password can be reset

### Tag – Device information

## NETWORK STANDARD :



Supports LTE-FDD: Band 2 / Band 4 / Band 5 / Band 7 / Band28ab

Supports HSPA+/UMTS : 1900MHz / 850MHz

Maximum Downstream Rate : LTE-FDD 150Mbps.

## SIGNAL LIGHT STATUS



Red Light ON : searching Network/Fault

Green Lights On : Access network successfully

## TAG



SSID: 401AF\_XXXXXX  
PVID: 12345678  
MAC: 5C:67:8A:9C:00:01  
IMEI: 357623000000000  
SN: 212030000000000

4G Dongle

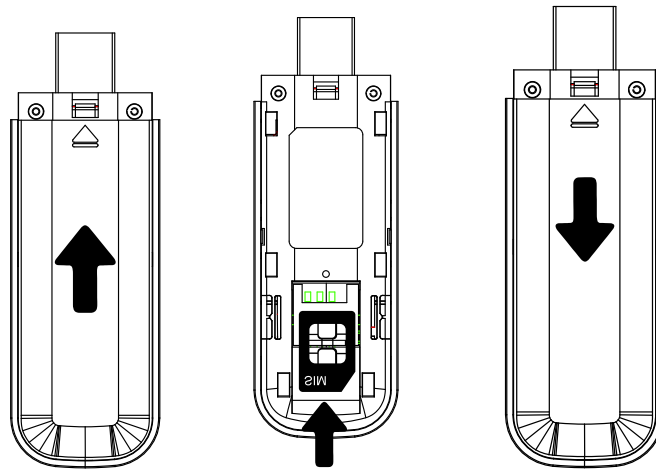
Model No.:xxxxx

IMEI: xxxxxxxxxxxx

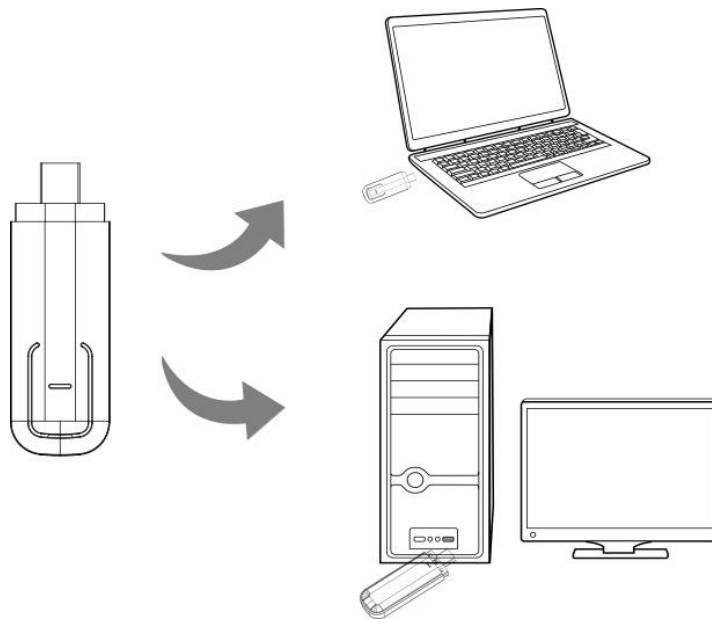
SN: xxxxxxxxxxxx

## SET UP YOUR USB STICK

- Slide the back cover off the USB Stick, and insert your SIM as shown, insert the card as shown.

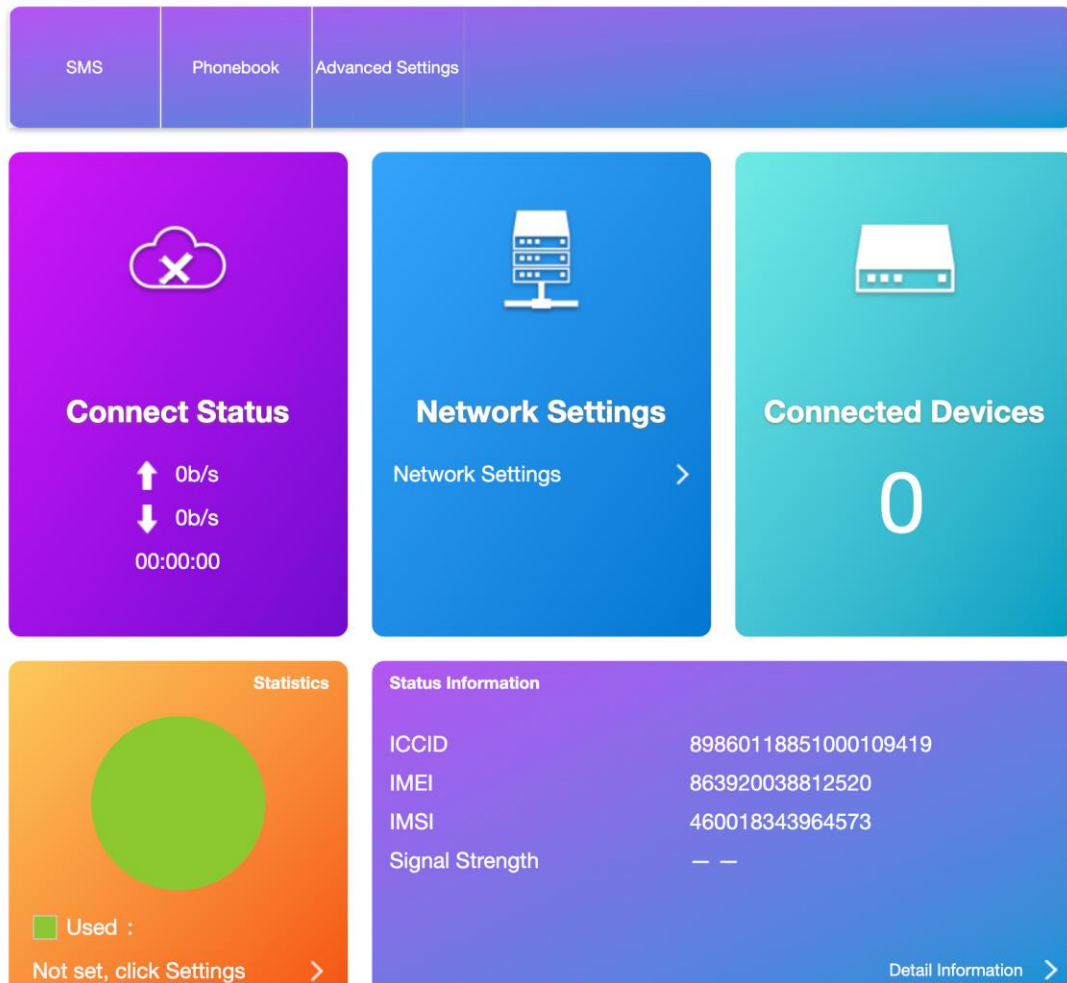


- Plug the USB Stick firmly into your computer's USB port.



## ADMIN ACCESS – GUI

After connecting to the USB stick, enter the following URL in the Browser: <http://192.168.0.1>, then you can login the device's management platform, the password of the GUI is **admin**



**Status** – check the status of the current connection

**Connect/Disconnect** – connect to the internet via the mobile phone network, to browse the web or use email.

**Start SMS application** – send, receive, and manage SMS messages and contacts

**Phonebook** – Click Phonebook on the menu bar to open the contact list, in which you can save SMS numbers that you use frequently as contacts with names

**Advanced** – Switch to advanced to show more details

## HINTS AND TIPS

**If you don't see your USB stick in the list of devices**

- Remove the USB stick, re-start your computer and then re-insert the USB stick.
- If no network can be found or the signal strength is low
  - Change your physical location: in a building, move closer to a window, move higher up, or go outside

- Login the GUI and open the network setting View, click “network settings”>” network selection”, and see if you can connect one of the networks listed.
- Set up APN, resetting up the APN of the SIM card again.
- Contact: Support and check that data services are enabled on your account.

## CAUTIONS

Please read the following precautions before using:

- Input voltage requirements: DC 5V/1A
- Handle with care and keep the product in a clean and dust-free place.
- Do not drop, throw, bend or disassemble the product
- Do not put it in a place with moisture, water, or other liquids.
- Please do not put this product in the place with high temperature or flammable gas.
- Do not allow children to use this product without any guidance, keep it out of reach of children.
- When using this product, please abide by relevant laws and regulations, respect the privacy and legitimate rights and interests of others

## PACKING LIST

1\*LTE USB Stick

1\*User Manuel

## FCC STATEMENT

This equipment has been tested and found to comply with the limits for a Class B digital device, pursuant to part 15 of the FCC Rules. These limits are designed to provide reasonable protection against harmful interference in a residential installation. This equipment generates, uses and can radiate radio frequency energy and, if not installed and used in accordance with the instructions, may cause harmful interference to radio communications. However, there is no guarantee that interference will not occur in a particular installation. If this equipment does cause harmful interference to radio or television reception, which can be determined by turning the equipment off and on, the user is encouraged to try to correct the interference by one or more of the following measures:

- Reorient or relocate the receiving antenna.
- Increase the separation between the equipment and receiver.

- Connect the equipment into an outlet on a circuit different from that to which the receiver is connected.
- Consult the dealer or an experienced radio/TV technician for help.

Caution: Any changes or modifications to this device not explicitly approved by manufacturer could void your authority to operate this equipment.

This device complies with part 15 of the FCC Rules. Operation is subject to the following two conditions: (1) This device may not cause harmful interference, and (2) this device must accept any interference received, including interference that may cause undesired operation.

**Specific Absorption Rate (SAR) information:**

This LTE 4G USB Dongle meets the government's requirements for exposure to radio waves. The guidelines are based on standards that were developed by independent scientific organizations through periodic and thorough evaluation of scientific studies. The standards include a substantial safety margin designed to assure the safety of all persons regardless of age or health. FCC RF Exposure Information and Statement the SAR limit of USA (FCC) is 1.6 W/kg averaged over one gram of tissue. Device types: LTE 4G USB Dongle has also been tested against this SAR limit (Max SAR: 0.770W/kg). This device was tested for typical body-worn operations with the back of the phone kept 0mm from the body. To maintain compliance with FCC RF exposure requirements, use accessories that maintain a 0mm separation distance between the user's body and the back of the phone. The use of belt clips, holsters and similar accessories should not contain metallic components in its assembly. The use of accessories that do not satisfy these requirements may not comply with FCC RF exposure requirements and should be avoided.