



# USER MANUAL



---

## Multifunctional Radar/Laser Detector

**VP388T**

# CONTENT

<b>1. DISCLAIMER AND SAFETY GUIDELINES</b>	<b>1</b>
1.1 <i>Disclaimer</i>	1
1.2 <i>Safety Guidelines</i>	2
<b>2. ACCESSORIES AND INTERFACES</b>	<b>3</b>
2.1 <i>In the box</i>	3
2.2 <i>Product Diagram</i>	4
2.3 <i>Display Interpretation</i>	5
2.4 <i>Installation Guideline</i>	6
<b>3. FUNCTIONS AND SETTINGS</b>	<b>7</b>
<b>4. APPENDIX</b>	<b>9</b>
4.1 <i>GPS Data Update (Quick Update) Guideline</i>	9
4.2 <i>Specifications</i>	10
4.3 <i>Warranty</i>	10

---



To protect our forests, please use the e-version of this manual. If you encounter any problems while reading this manual or using the product, please feel free to contact us: [support@spedaltech.com](mailto:support@spedaltech.com)

# 1. DISCLAIMER AND SAFETY GUIDELINES

## 1.1 Disclaimer

This product is a multifunctional radar/laser detector. By using the radar/laser detection functions and the GPS spot alarm function, you will be able to drive without violating any traffic rules. Please pay special attention to the cautions and warnings in this User Manual. You can visit our homepage <http://www.spedal.cc> to get relevant files of this product, including User Manual and other files. Shenzhen Xinzhuang Gude Technology Co. Ltd. (Spedal) reserves the right to update this User Manual.

The information in this document affects your safety, legal rights and responsibilities. Read this entire document carefully to ensure proper configuration before use. Failure to follow the instructions and warnings in this document may result in product damage or other possible injury or loss. You must strictly follow Spedal's guidelines to install and use the product, and never use non-standard parts. Before assembling, setting up and using, be sure to carefully read all the instructions and warnings in this document. This product is not a toy. Please do not allow children to touch this product or its parts and wires. Please be careful when operating in scenes where children are present.

By using this product, you hereby signify that you have read this disclaimer carefully and that you understand and agree to abide by the terms and conditions herein. The user promises to be responsible for his actions and all consequences arising therefrom. The user promises to use this product only for legitimate purposes, and agrees to all the terms and contents of this document and any related policies or guidelines that Spedal may formulate. You understand and agree that in the absence of videos or photos, Spedal may not be able to analyze the cause of your product damage or accident, and cannot provide you with after-sales service such as warranty.

**Spedal is not responsible for all losses caused by the user's failure to use the product in accordance with this User Manual.**

---

In compliance with laws and regulations, Spedal reserves the right of final interpretation of this document and all related documents of this product. If the manual is updated, revised or terminated, we will not notify you personally. Please visit the official website of Spedal for the latest product information. Spedal is a trademark of Shenzhen Xinzhuang Goodo Technology Co. Ltd. and its affiliates. The product names, brands, etc. appearing in this article are all trademarks or registered trademarks of their respective companies.

## 1.2 Safety Guidelines

### Warnings

- Please use the original cable and power cords only;
- Do not exceed the rated voltage when using the device;
- Do not install or operate the device with wet hands;
- Do not install the device in places of high temperature, humidity;
- Do not install the device in places of flammable or explosive gases or liquids;
- Do not install the device in an area interfering with the driver's sight or driving safety;
- Do not install the device on the airbag cover or within the airbag's working range;
- Do not leave the device in a closed vehicle under high temperature for a long time;
- Do not poke the device and its accessories using sharp objects such as awl or scissor;
- Do not disassemble, repair or modify the device and its accessories by yourself;
- Do not install, use or place the device within the reach of any children under 16;
- Do not cut the charging cable.



**Notice: Damage caused to the dashcam as result of not obeying the warnings above is not covered by the warranty!**

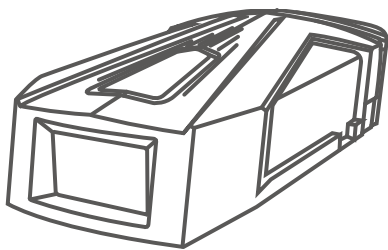
### Cautions

- Turning on the WiFi option in the device will disable the detection function.
- When using the memory card for the first time, please format it on the device to ensure its stable reading and writing;
- When not using the device for a long time, please pull out the memory card in advance to ensure the memory card's normal performance.
- Turning on the WiFi option in the device will disable the detection function.

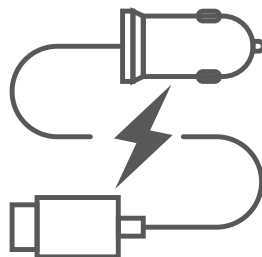
## 2. ACCESSORIES AND INTERFACES

### 2.1 In the box

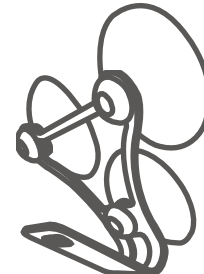
Before using this product, please check whether the product package contains all of the following items. If anything is missing, please contact Spedal or your local agent.



Radar Detector



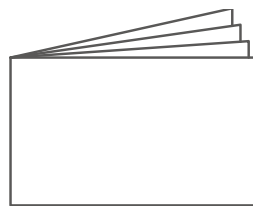
In-Car Charger



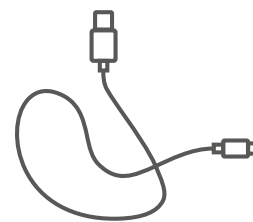
Triple Suction Bracket



Sticking Bracket



Quick Guide

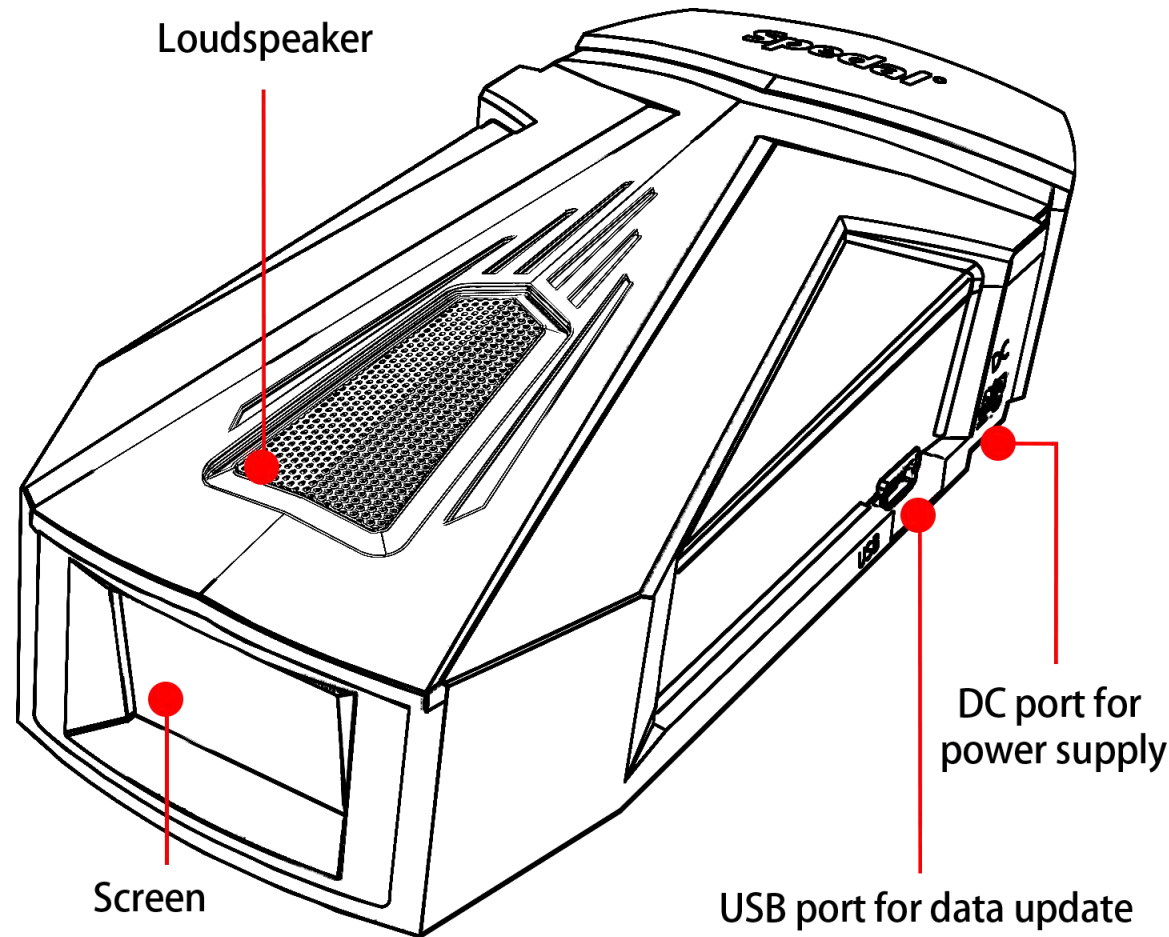


0.8m USB cable

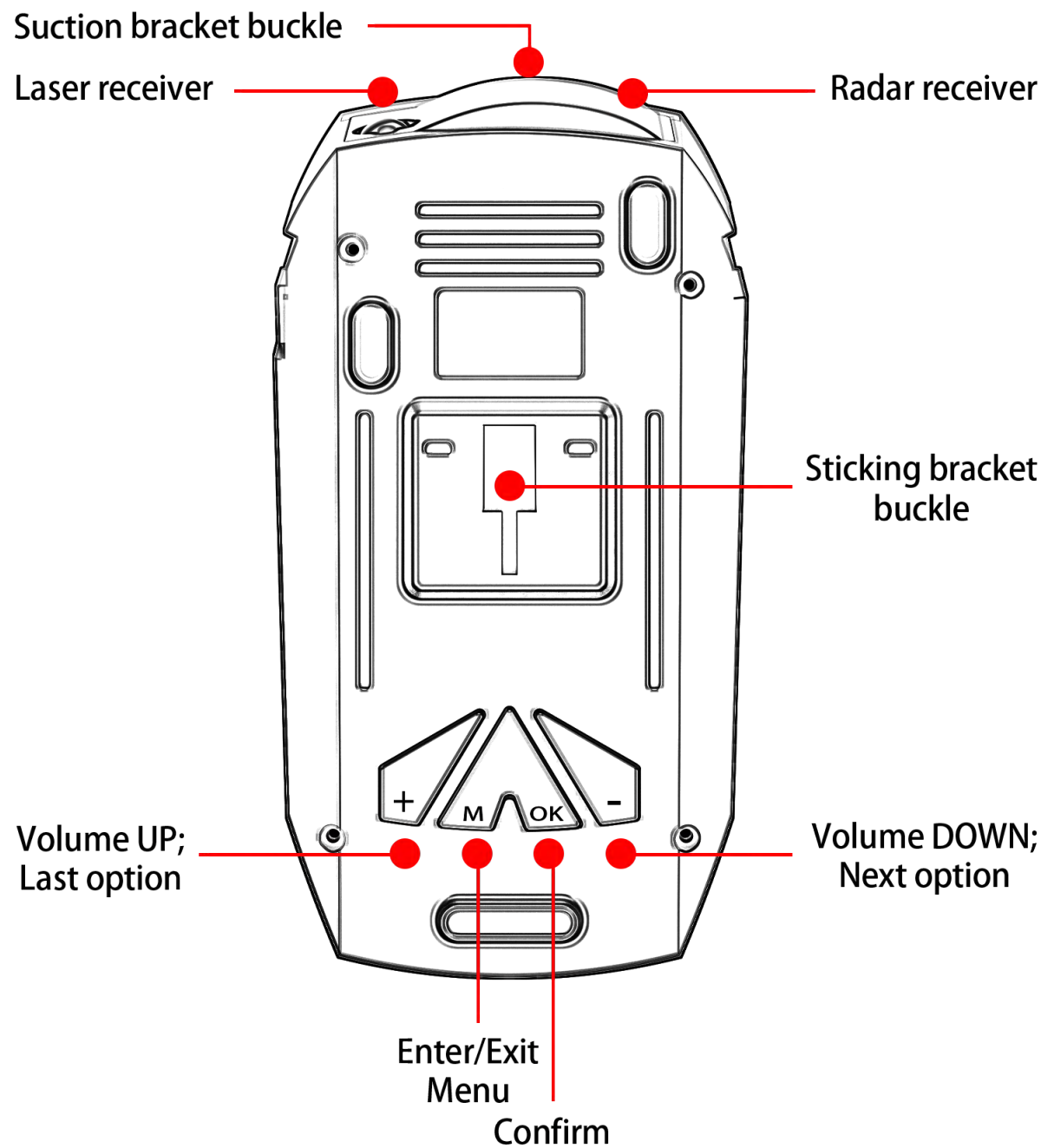
**Notice: Please use the SPEDAL original cable and accessories only. Gifts and accessories are not covered by the warranty. In the VP668 Series, the VP668T Plus version will have an external antenna. The content of this product package is subject to change without notice, the actual package content shall prevail.**

2.2 Product Diagram

Front side



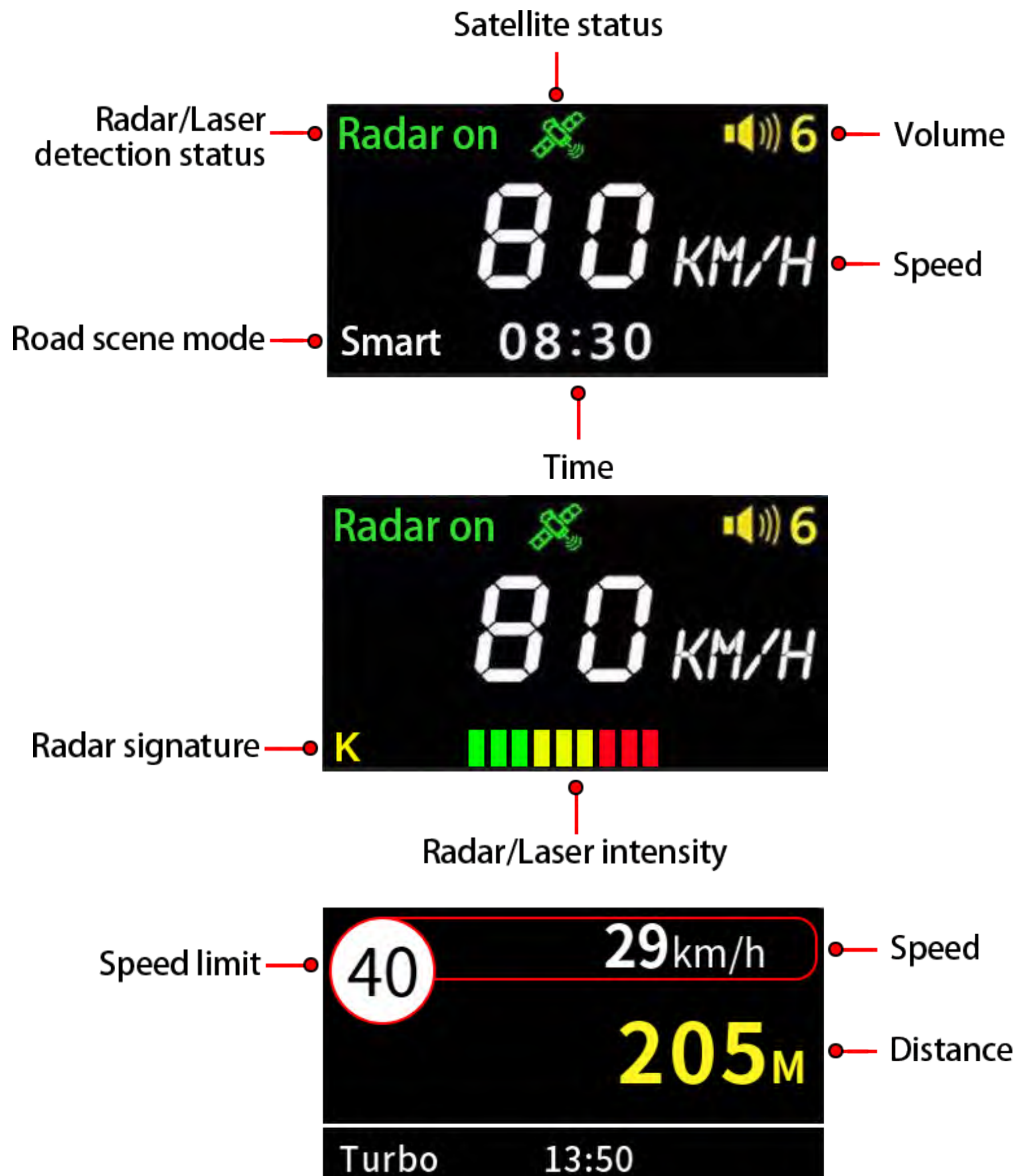
Back side





## 2.3 Display Interpretation

The display will have different informations on it. Please refer to the following figures to understand its meanings.



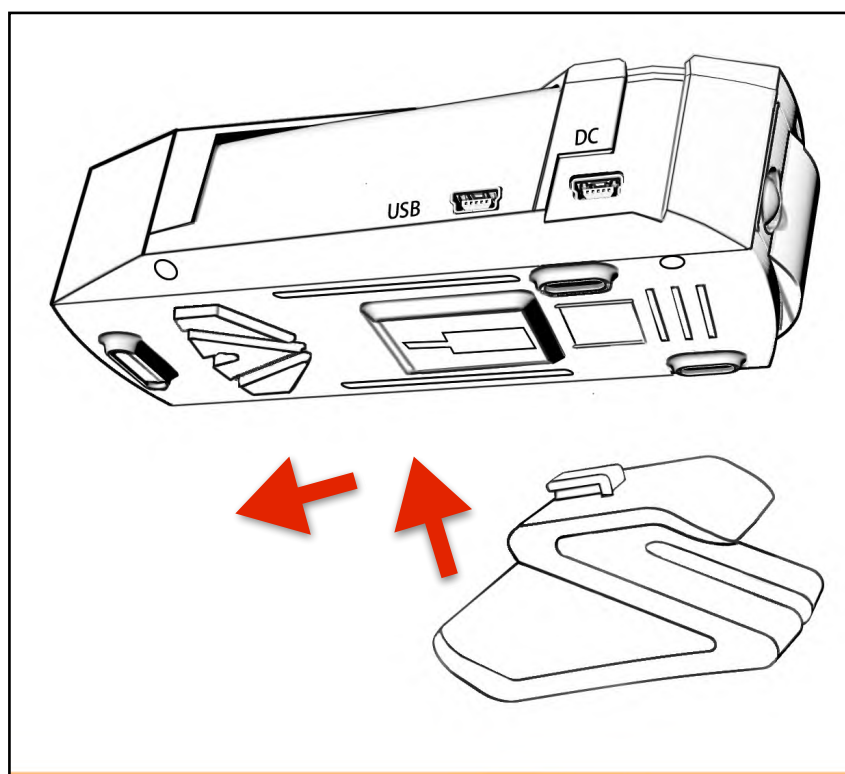
## 2.4 Installation Guideline

The device is in the storage state when it leaves the factory. Please follow the steps below to prepare for installation:

1. Take the device and its accessories out of the box or plastic bag;
2. Tear off the protective film from the radar/laser receiver;
3. Remove the wire tie that binds the wire.

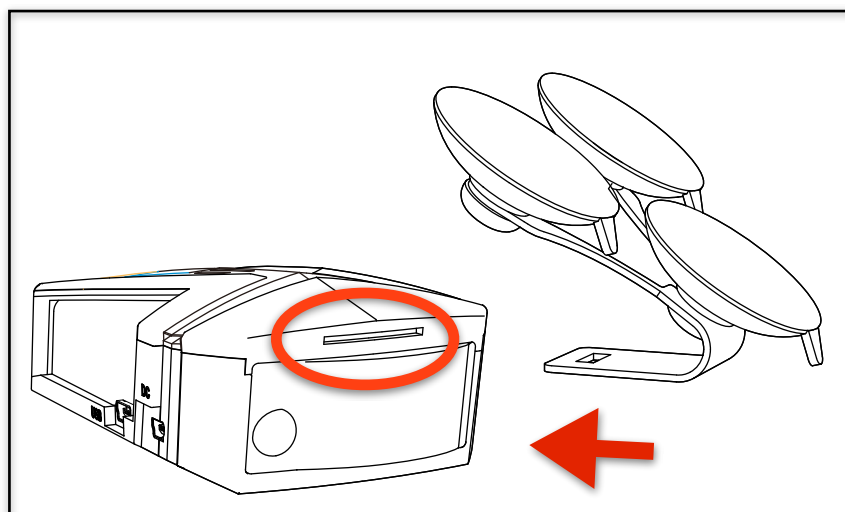
### Sticking Bracket Installation

1. Aim the sticking bracket transfer slide buckle at the mount buckle on the device.
2. Hold the device and sticking bracket with your hands, and push the sticking bracket buckle into the device buckle to lock;
3. Tear off the protection film from the bottom of the sticking bracket;
4. Stick the bracket with the device onto the dash board and make sure that the radar/laser receiver faces outwards and the screen faces the driver.
5. Use the in-car charger to connect the device with the cigarette lighter socket.



### Triple Suction Bracket Installation

1. Aim the clip of the triple suction bracket towards the hole above the radar/laser receiver on the device;
2. Push the bracket inwards to lock the clip;
3. Position the bracket on the windshield, press and squeeze the air out and make sure that the radar/laser receiver faces outwards and the screen faces the driver;
4. Use the in-car charger to connect the device with the cigarette lighter socket.





### 3. FUNCTIONS AND SETTINGS

Please note, the following instructions are based on the latest menu version. If your device has different menu options, please update your system to the latest version by contacting us at [support@spedaltech.com](mailto:support@spedaltech.com) or visit our website [www.spedal.cc](http://www.spedal.cc) to obtain the latest version of the system.

The Spedal multifunctional radar detector is equipped with the most cutting-edge DSP (Digital Signal Process) microelectronic digital signal processor and DF (Digital Filtering) technology. It is able to detect all range of radar signals and filter other interference signals efficiently, for example, radar signals from other vehicles like BSD, CVW, RCTA, BSM etc., and radar signals of auto gate, auto escalator etc.

- Frequency lock, phase lock, digital frequency division, frequency counting error -120db gain + / - 8MHz.
- Radar detector range: radar receiving X - 10.525GHz + / - 50MHz.
- K - 24.150GHz + / - 100MHz, Ka - 34.70GHz + / - 1300MHz.
- Digital frequency division processing technology, control 23.85GHz - 24.25GHz deviation within 8MHz.
- Receivable bandwidth of K-band pulse signal: 23.85GHz - 24.25GHz.
- Receivable bandwidth of K-band continuous wave signal: 24.08GHz - 24.18GHz (can be modified).
- K-frequency 24.12 center frequency gain, when there is no MMIC, the gain is amplified -122db + / - 1.5db; when there is MMIC, the gain is amplified -127db + / - 1.5db (The gain test environment is WM laboratory, and the value is the experimental value).
- The following radar signals of different brands can be detected and presented as unique radar signature: Krechet, Skat, Kris, Iskra, Sokl, Binar, Radis, Vizir, Arena, Oskon, Integer Kdd, Vocord, Cordon M2, Cordon M4, Strelka, Robot, MTR\_CD, MTR\_CT etc.

Please refer to the chart below to set up your device so that it will detect radar/laser signals and GPS spots efficiently.

No.	Category	Subcategory	Note
1	Mode settings	<ul style="list-style-type: none"> <li>Road scene mode [1]</li> </ul>	<p>[1] Smart mode: the device will alarm on radar/laser signals and filter interference signals when car speed &gt;50km/h.</p> <p>Turbo mode: the device will alarm on all signals and GPS spots before you make any further settings.</p>
2	Sound settings	<ul style="list-style-type: none"> <li>Mute radar alarm [1]</li> <li>Mute GPS spot alarm [2]</li> <li>Broadcast mode</li> </ul>	<p>[1] In turbo mode, you can mute the radar alarms under this speed value.</p> <p>[2] In turbo mode, you can mute the GPS spot alarms under this speed value.</p>
3	Other settings	<ul style="list-style-type: none"> <li>My highest speed [1]</li> </ul>	<p>[1] When the actual speed is higher than this value, the device will alarm on overspeeding.</p>
4	GPS spot settings	<ul style="list-style-type: none"> <li>Spot alarm distance</li> </ul>	<p>[1] Start point of GPS spot alarm.</p>
5	Radar settings	<ul style="list-style-type: none"> <li>K band</li> <li>KA band</li> <li>S band</li> <li>Laser band</li> <li>Radar anti-interference</li> <li>Laser band sensitivity</li> <li>K band sensitivity</li> <li>MTR_CD band</li> <li>MTR_CT band</li> <li>Radar filter level</li> </ul>	<p>To turn on/off or adjust sensitivity of alarms on specific radar/laser bands.</p>
6	Other settings	<ul style="list-style-type: none"> <li>Speed fine-tuning</li> <li>Reset system</li> <li>Version info</li> </ul>	/

## 4. APPENDIX

### 4.1 GPS Data Update (Quick Update) Guideline

The road data of the region / country where the product is sold has been downloaded and saved in the device in advance. We strongly suggest you to use this function for a period time before updating it again. You can choose either on Windows computer or on Android mobile phone to update your GPS data.

#### **On Windows**

The update procedure is as following:

1. Connect the device with a computer of Windows system;
2. Open the "UpdateTool.exe" file in the device folder;
3. Choose language and country data to update.

Note: Please use the 0.8m USB cable to connect the device (USB port, not DC port) with the computer.

#### **On Android**

Please scan the QR code on the right to visit our homepage and download the "Spedal-VP388.zip" under support-download. Unzip the file and install the WMEDOG on your Android mobile phone.



Please follow the steps below to connect the device with the APP:

1. Long press any button for 3 seconds to enter Update Mode;
2. Please ensure the Bluetooth of your mobile phone is turned ON. Enter the APP, click on the "get device information" to connect to the device;
3. The APP will try to connect to the device. Once it is connected, a window will pop up, saying "Getting device information successful".
4. click on "Update device data", the blue button on the APP;
5. Data update starts and will last 1-5 minutes.

For any questions please contact [support@spedaltech.com](mailto:support@spedaltech.com)

## 4.2 Specifications

Size	66*127*32mm
Screen	1.14" IPS color screen
Voltage	DC12V-24V
Current	200-350MA
USB	Mini USB 2.0
Operating temperature	0°C ~55°C
Storage temperature	-20°C ~70°C

## 4.3 Warranty

Thank you for purchasing the Spedal multifunctional radar detector. This product is equipped with advanced detection technology and will guard your journey on roads.

Customers enjoy a one-year warranty and after-sales service from the date of purchase. During this period, our company will actively respond to customers' questions or problems and provide maintenance services for product failures under normal use. Delivery fee of the product sent to and back from the factory for repair or replacement shall be paid by the product owner or the person asking for repair.

**The company reserves the right to reject maintenance requirements caused by the following conditions, including but not limited to:**

1. Failure to follow instructions and improper use causing device failure or damage;
2. Failure due to unauthorized disassembly, modification or maintenance of equipment;
3. Accidental damages caused by any natural disasters or other force majeure factors;
4. Warranty period of the device has expired;
5. Purchases from unreliable sources such as second-hand products.

Please strictly follow the instructions in this manual to use this product to avoid unnecessary losses. If you have any questions or problems while reading the product manual or using the product, please contact us by email: [support@spedaltech.com](mailto:support@spedaltech.com) or visit our official website.



[www.spedal.cc](http://www.spedal.cc)

#### FCC Warning Statement

Changes or modifications not expressly approved by the party responsible for compliance could void the user's authority to operate the equipment. This equipment has been tested and found to comply with the limits for a Class B digital device, pursuant to Part 15 of the FCC Rules. These limits are designed to provide reasonable protection against harmful interference in a residential installation. This equipment generates uses and can radiate radio frequency energy and, if not installed and used in accordance with the instructions, may cause harmful interference to radio communications. However, there is no guarantee that interference will not occur in a particular installation. If this equipment does cause harmful interference to radio or television reception, which can be determined by turning the equipment off and on, the user is encouraged to try to correct the interference by one or more of the following measures:

- - Reorient or relocate the receiving antenna.
- - Increase the separation between the equipment and receiver.
- - Connect the equipment into an outlet on a circuit different from that to which the receiver is connected.
- - Consult the dealer or an experienced radio/TV technician for help.

This device complies with part 15 of the FCC Rules. Operation is subject to the following two conditions: (1) This device may not cause harmful interference, and (2) this device must accept any interference received, including interference that may cause undesired operation.

#### RF Exposure Statement

To maintain compliance with FCC's RF Exposure guidelines, This equipment should be installed and operated with minimum distance of 20cm the radiator your body. This device and its antenna(s) must not be co-located or operation in conjunction with any other antenna or transmitter.