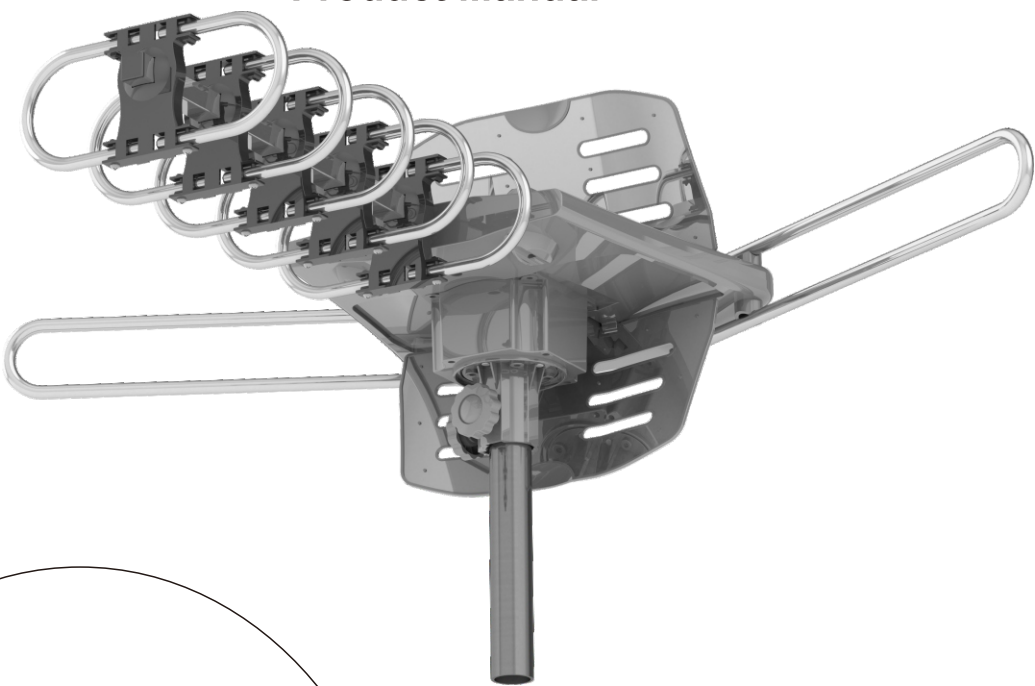


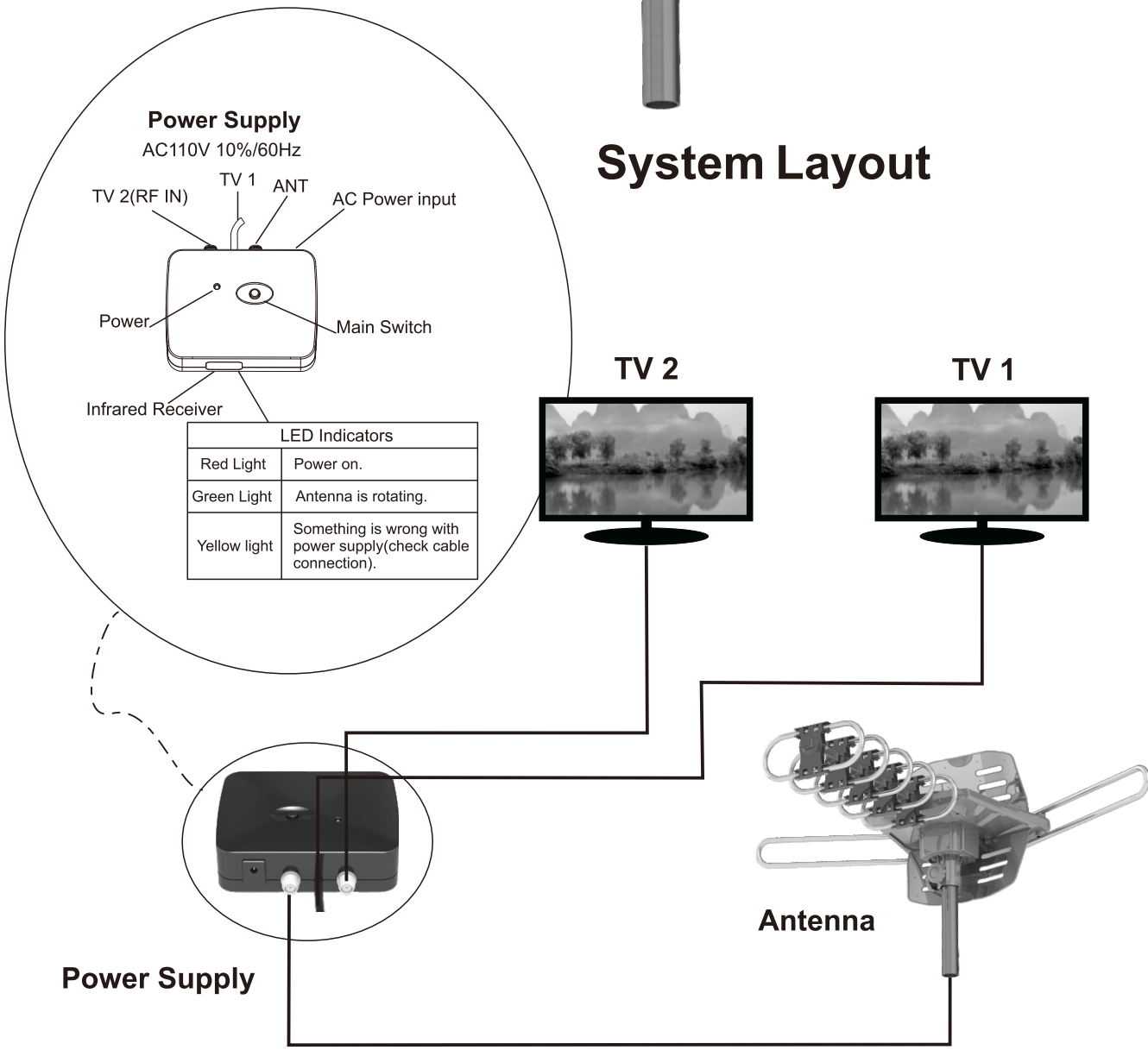
大8K 105G 双面黑白

Rotating Remote Controlled TV Antenna

FSA5809
Product Manual



System Layout



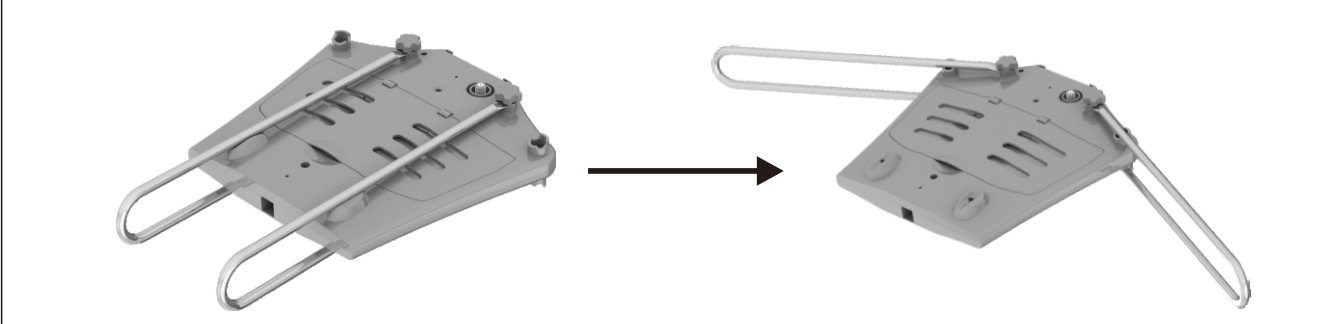
MADE IN CHINA

Package Contents

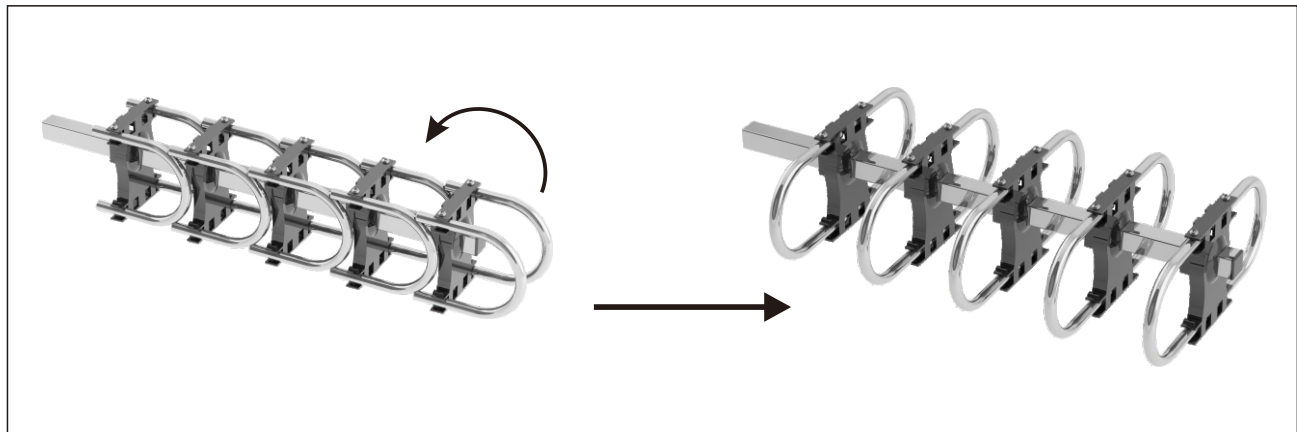
| NO. | NAME | Qty. | Image |
|-----|----------------------------------|------|-------|
| 1 | Main Unit | 1 | |
| 2 | Main Pole Column | 1 | |
| 3 | Motor-Fixed Bolster | 1 | |
| 4 | U-Frequency Vibrator | 1 | |
| 5 | Screw(4x12mm) | 9 | |
| 6 | Control box | 1 | |
| 7 | Remote Controller | 1 | |
| 8 | 40 ft Coaxial Cable | 1 | |
| 9 | Coaxial Cable Gasket | 1 | |
| 10 | Instruction | 1 | |
| 11 | nylon cable ties | 3 | |
| 12 | cable nails | 15 | |
| 13 | splitter | 1 | |
| 14 | Power adapter | 1 | |
| 15 | Optional support rod accessories | 1 | |

! It has one year warranty and the customer will bear the freight for the return and replacement.

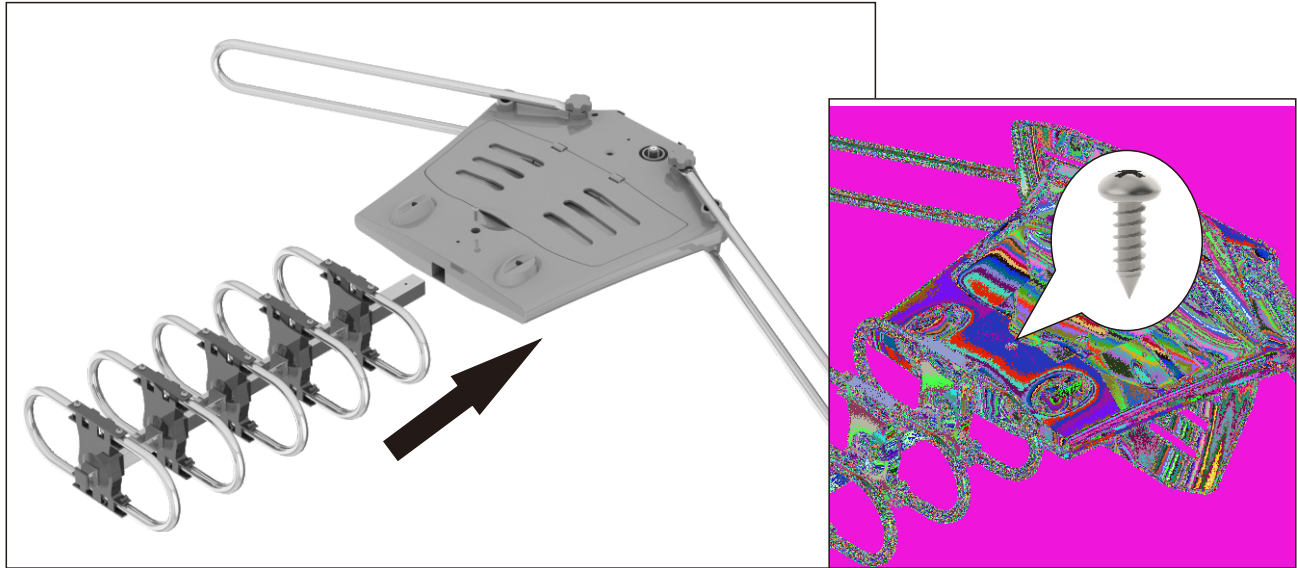
P1: Install U-Frequency Vibrators



A: Rotate the VHF receiving vibrator on the main body into the card slots on both sides.



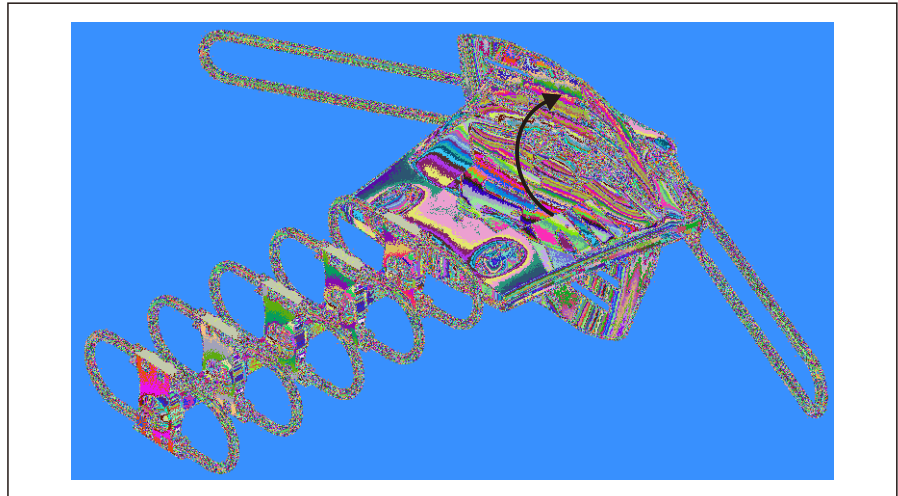
B: Rotate the five directors counterclockwise in turn.



C: Insert the new assembly into the Main Unit as shown.

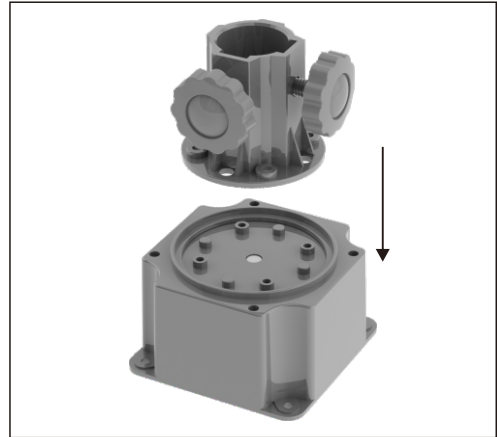
D: Secure with the 4x12mm screw as shown.

P2: Open Reflection Panel

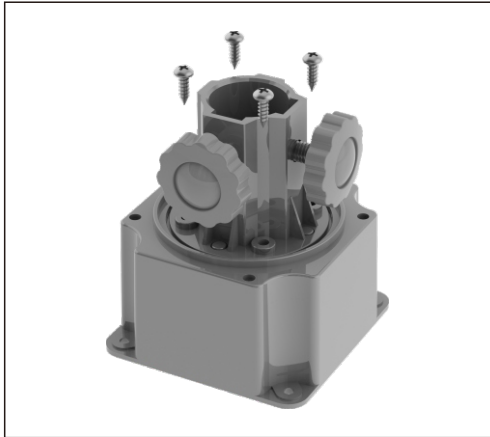


Open the Reflection Panel as shown.

P3: Install Motor Rotor



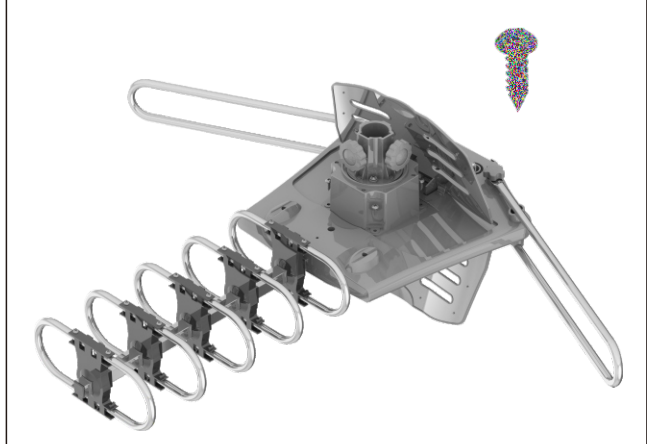
A: Place Main Pole Column onto Motor-Fixed Bolster.



B: Insert the four 4x12mm screws to secure.

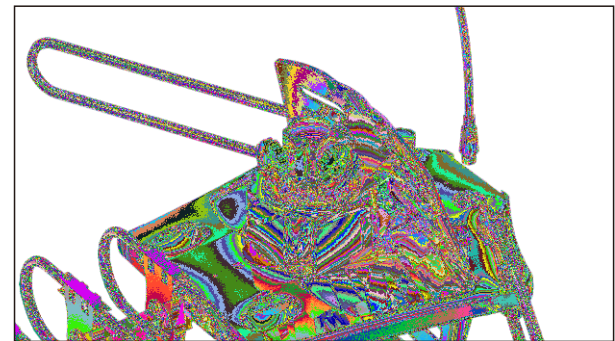


D: Place the Motor-Fixed Bolster onto the Main Unit as shown.



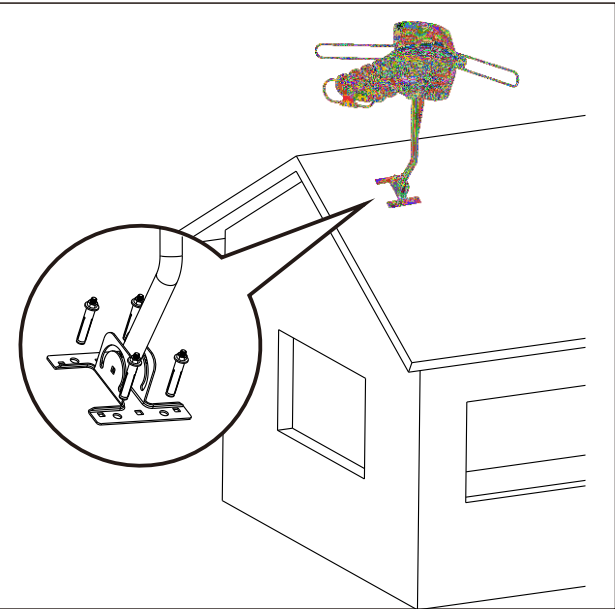
E: Insert the four 4x12mm screws to secure.

P4: Connect Signal Line



Connect the coaxial signal line and tighten the fastener.

P5: Secure Antenna



Fix antenna and mast pole on the rooftop or the side of the house face the TV station transmitters.

FCC Statement

This equipment has been tested and found to comply with the limits for a Class B digital device, pursuant to part 15 of the FCC Rules. These limits are designed to provide reasonable protection against harmful interference in a residential installation. This equipment generates, uses and can radiate radio frequency energy and, if not installed and used in accordance with the instructions, may cause harmful interference to radio communications. However, there is no guarantee that interference will not occur in a particular installation. If this equipment does cause harmful interference to radio or television reception, which can be determined by turning the equipment off and on, the user is encouraged to try to correct the interference by one or more of the following measures:

- Reorient or relocate the receiving antenna.
- Increase the separation between the equipment and receiver.
- Connect the equipment into an outlet on a circuit different from that to which the receiver is connected.
- Consult the dealer or an experienced radio/TV technician for help.

Caution: Any changes or modifications to this device not explicitly approved by manufacturer could void your authority to operate this equipment.

This device complies with part 15 of the FCC Rules. Operation is subject to the following two conditions: (1) This device may not cause harmful interference, and (2) this device must accept any interference received, including interference that may cause undesired operation.

Radiation Exposure Statement

This equipment complies with FCC radiation exposure limits set forth for an uncontrolled environment. This equipment should be installed and operated with minimum distance 20cm between the radiator and your body.