

## The steps of single control

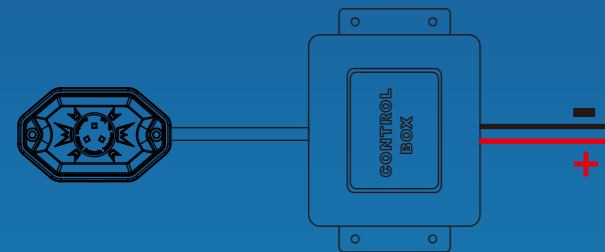


Search the Wireless devices, click on ✓ to save Wireless devices

Delete all options

## Technology parameter

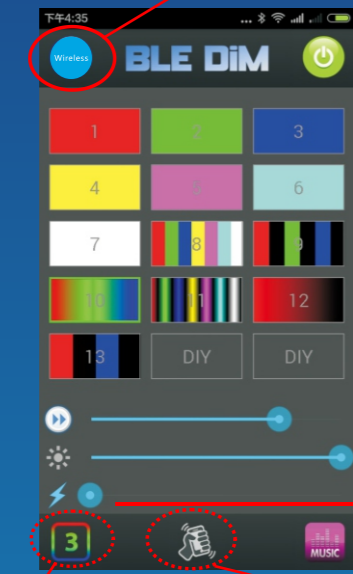
Input Voltage: DC12-24V  
Output power: 2A\*3, common Anode  
Control mode: mobile phone + infrared direct control  
Gray scale: 256\*256\*256  
Total brightness level: 8 grade  
operating temperature: -20°C~50°C  
IP Grade: IP 67  
Size: 79\*47\*21mm



## The steps of Multiple groups control



The App will automatically connect the device every time when it is open after the connection is successful, Do not need to manually connect everytime



Choose adjusting controlling model

Click the shake button, the button can be changed to green. Shake mobile phone can choose a color

Up to 15 scenarios can be set in advance

Change speed  
Brightness  
Stroboscopic speed

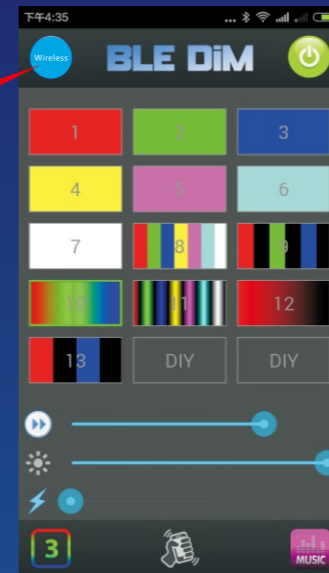
广州驰铭电子有限公司  
Guangzhou Chiming Electronic Technology Co., Ltd

## Mini RGB Rock Light CM-3003C

- Wireless control
- Mobile connection
- simple fashion
- DIY effect



Icon will display activated state when the connection is successful



Open the APP show the "Wireless connection rate"

please check whether your Wireless device is in a state of electricity  
please check whether your Wireless device is within range of a mobile phone Wireless, usually mobile phone Wireless is within 10 meters, different mobile have different distance.  
please refer to the previous "Wireless device connection" to reconnect the device.

The color of the Light can not match the set up color

please check if the line output to the light is connect correctly

single color dimming mode: the Anode — the Anode

the cathode — R

Color temperature mode: the Anode — the Anode

warm white — R

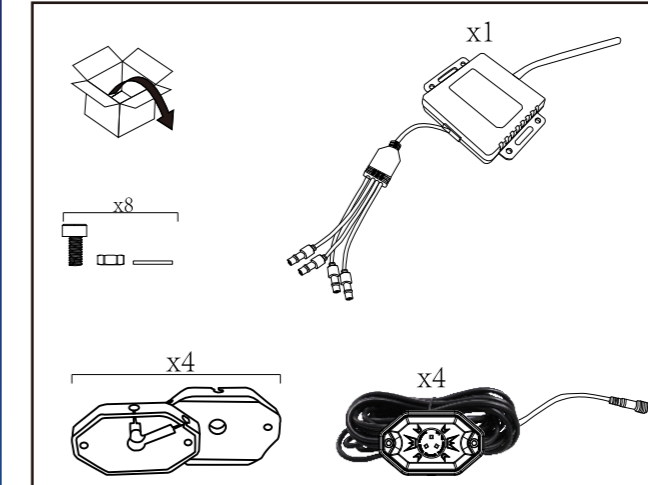
cold white — G

RGB mode: the Anode — the Anode

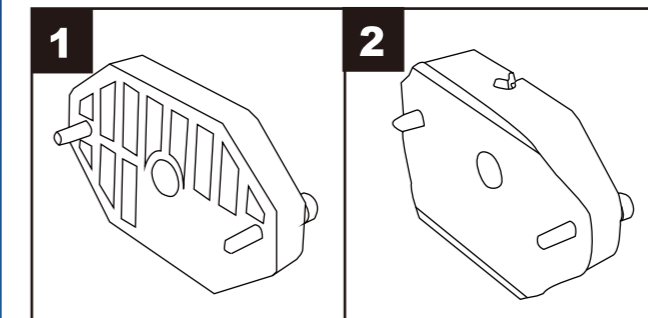
R — R

B — B

G — G



## Two kinds of fixed frame



Android



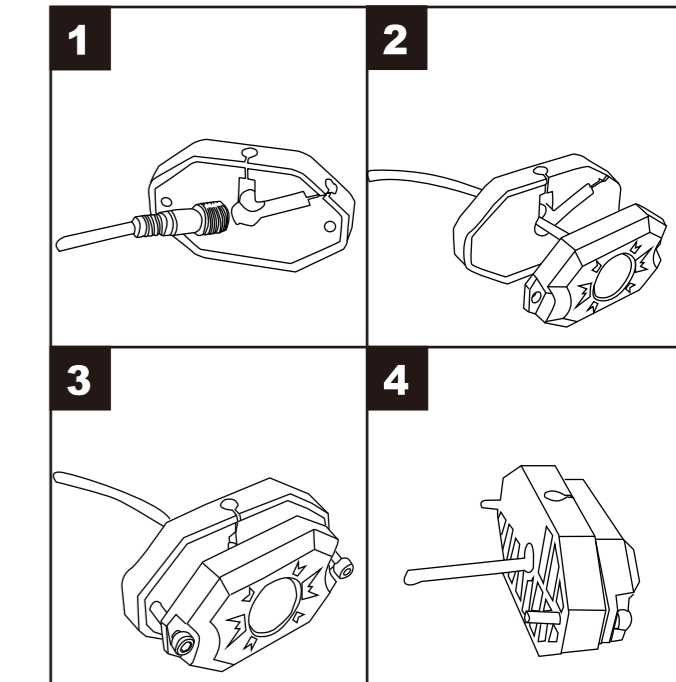
Scan download Google apps

iPhone

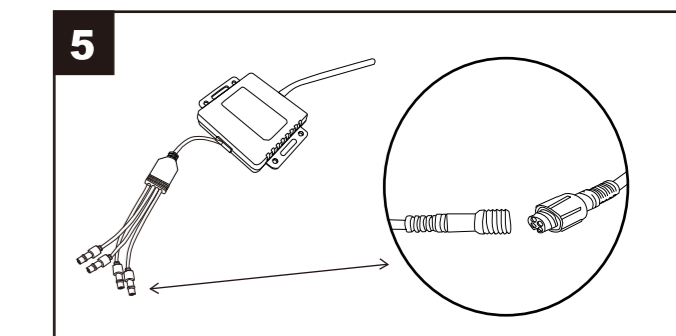


Scan to download IOS App

## Install Step



## The last



**FCC Caution:**

This device complies with part 15 of the FCC Rules. Operation is subject to the following two conditions: (1) This device may not cause harmful interference, and (2) this device must accept any interference received, including interference that may cause undesired operation.

Any Changes or modifications not expressly approved by the party responsible for compliance could void the user's authority to operate the equipment.

**Note:** This equipment has been tested and found to comply with the limits for a Class B digital device, pursuant to part 15 of the FCC Rules. These limits are designed to provide reasonable protection against harmful interference in a residential installation. This equipment generates uses and can radiate radio frequency energy and, if not installed and used in accordance with the instructions, may cause harmful interference to radio communications. However, there is no guarantee that interference will not occur in a particular installation. If this equipment does cause harmful interference to radio or television reception, which can be determined by turning the equipment off and on, the user is encouraged to try to correct the interference by one or more of the following measures:

- Reorient or relocate the receiving antenna.
- Increase the separation between the equipment and receiver.
- Connect the equipment into an outlet on a circuit different from that to which the receiver is connected.
- Consult the dealer or an experienced radio/TV technician for help.

The device has been evaluated to meet general RF exposure requirement. The device can be used in portable exposure condition without restriction.