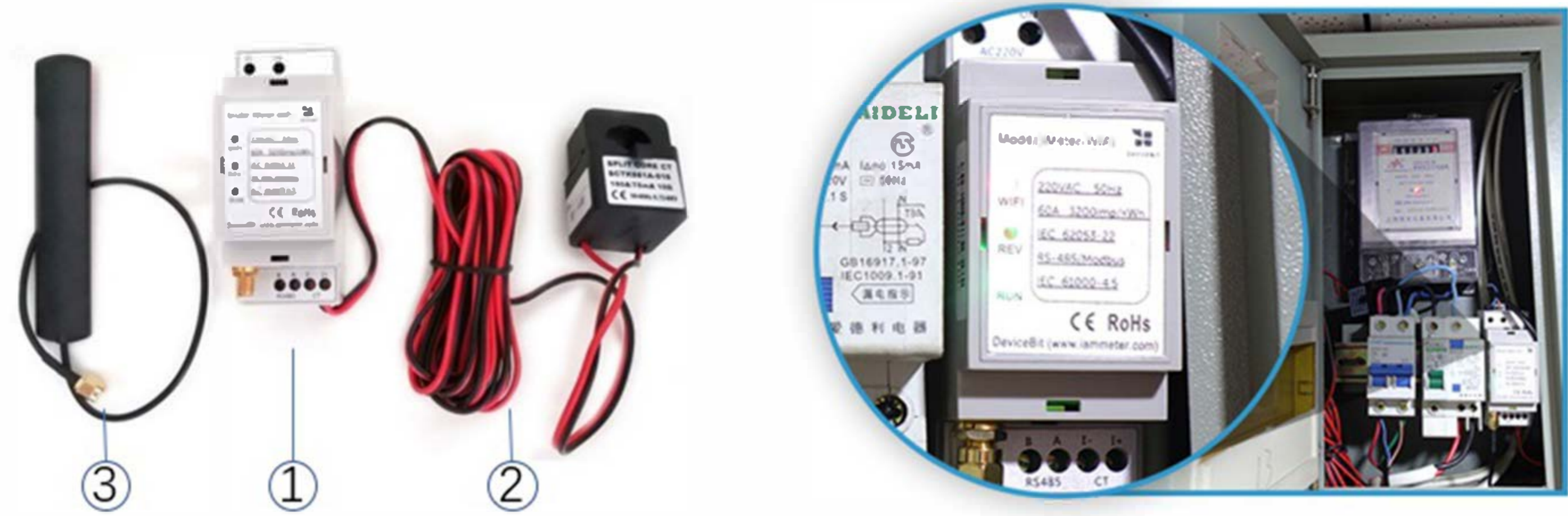


# QuickStart Single Phase Wi-Fi Electricity Meter (WEM3080)

## 1. Hardware Introduction

Hardware Appearance

After iMeter Installed

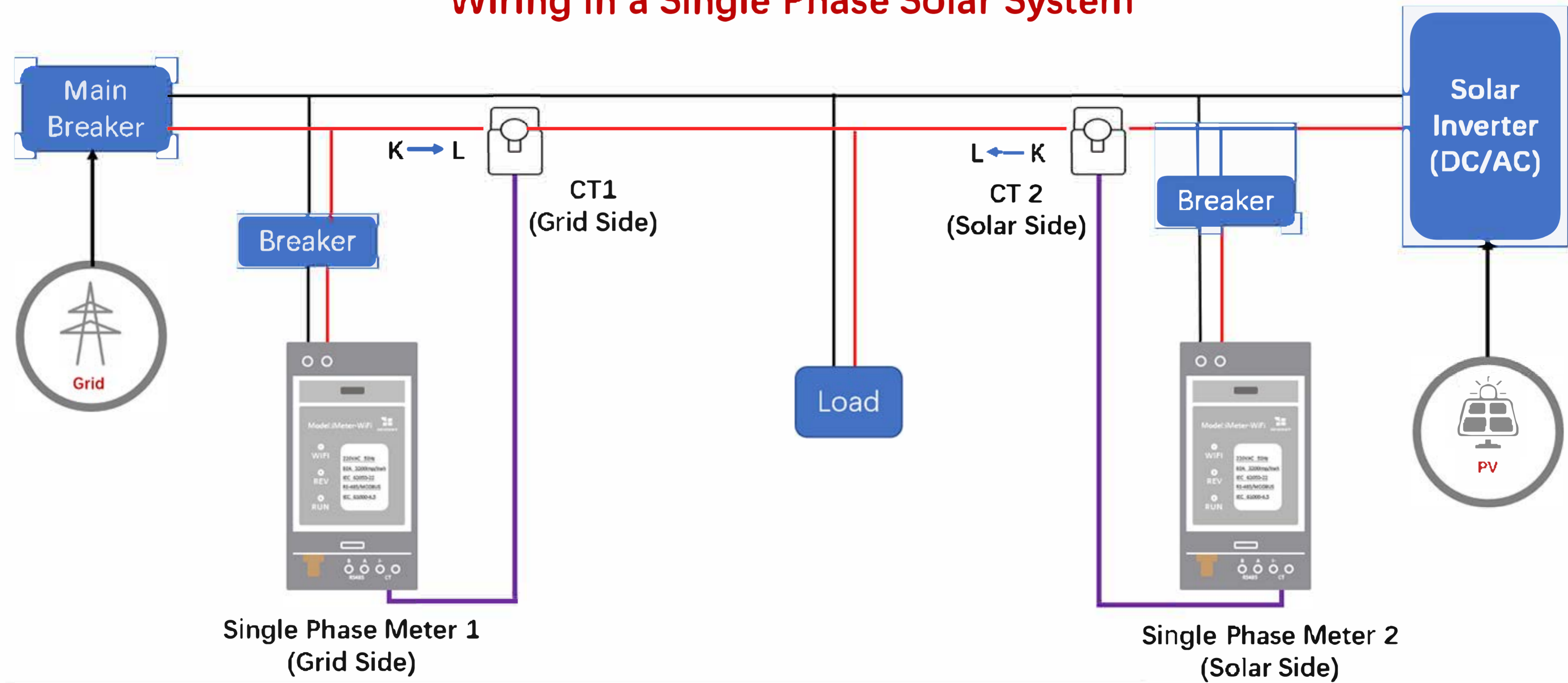


### Standard Inclusion:

No.	Item	Qty	Remark
1	Wi-Fi Energy Meter	1	Wi-Fi module embedded
2	Split-Core CT (Current Transformer)	1	100A by default, other CT ratings are optional
3	2.4G Antenna	1	

## 2. Typical Wiring Diagram

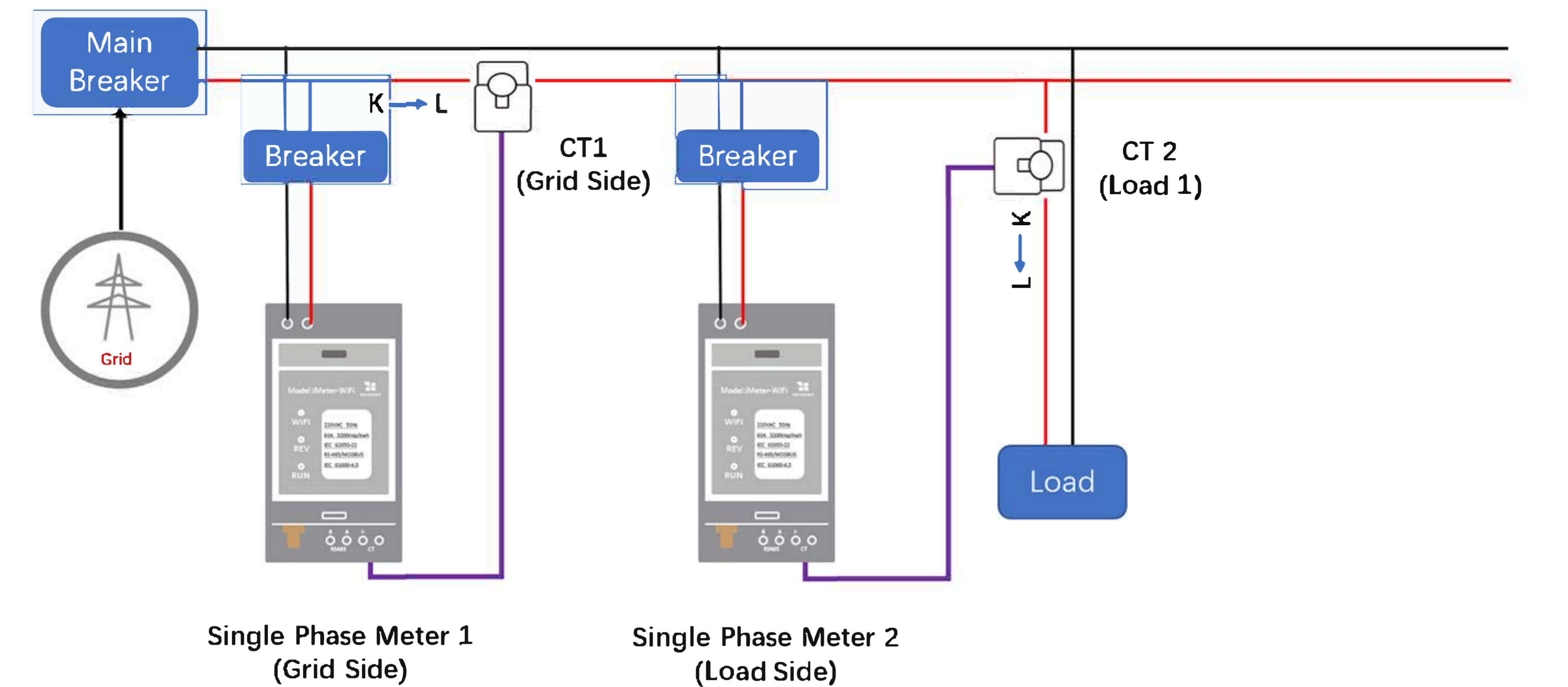
### Wiring in a Single Phase Solar System



Clip CT1 onto Grid: Measure "From Grid" or "To Grid" energy.  
If the measured current direction is K→L, the energy reading is accumulated as "From Grid" Energy;  
If the measured current direction is L→K, the energy reading is accumulated as "To Grid" Energy.  
Clip CT2 onto Inverter: Measure how much energy generated by inverter

— Neutral Line  
— Live Line

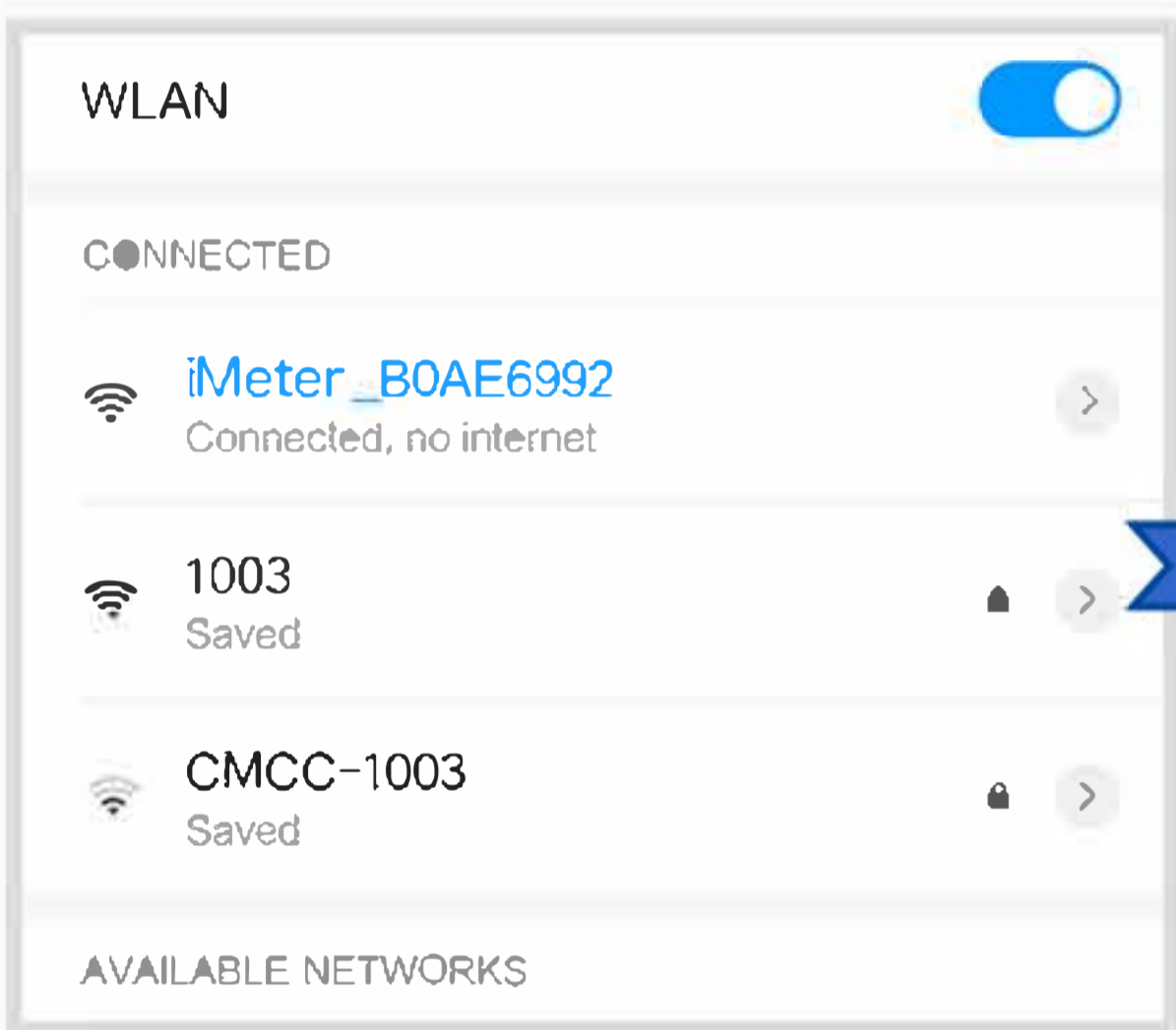
Wiring in a Single Phase Residential Electricity System



Clip CT1 onto Grid: Measure "From Grid" energy.  
Clip CT2 onto Load: Measure how much energy consumed by load

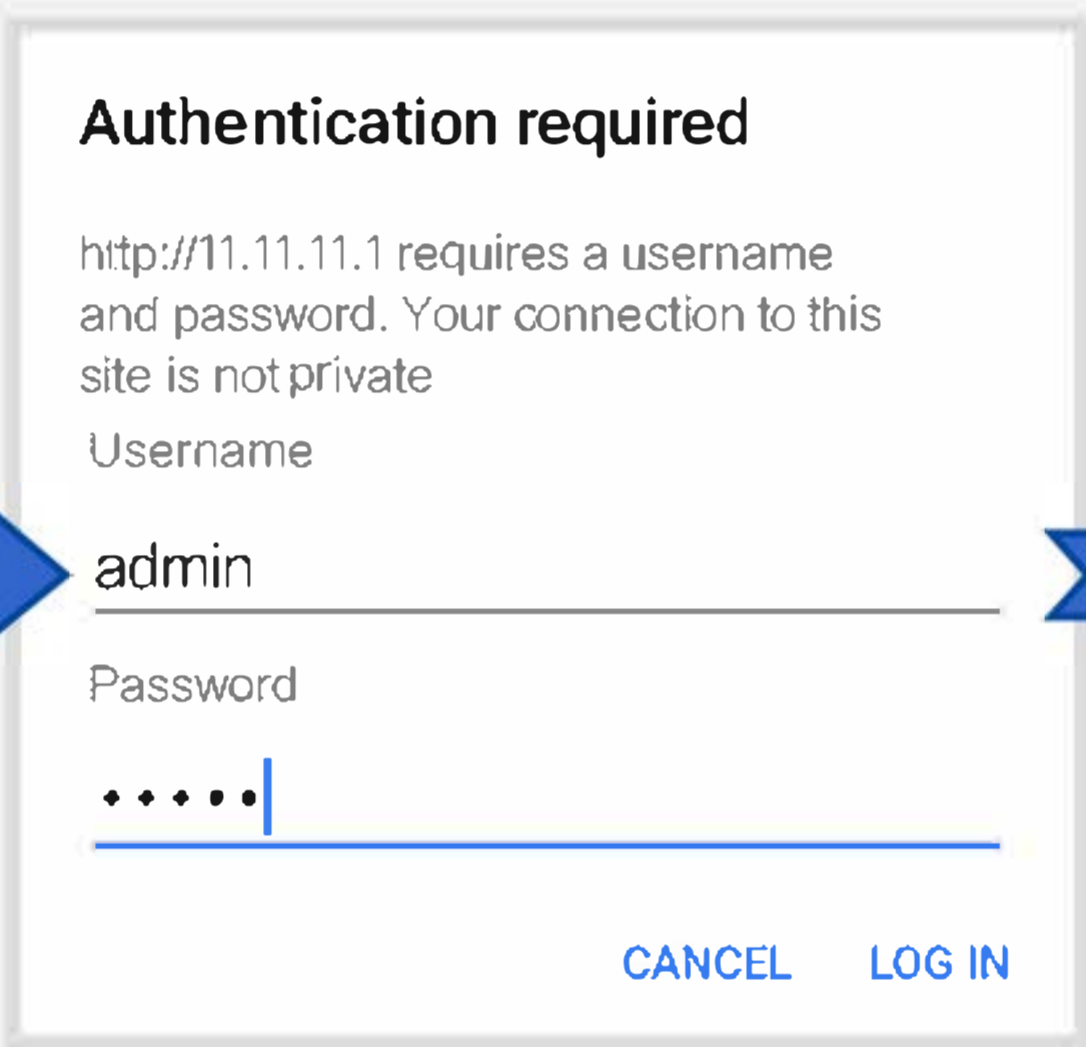
Neutral Line  
Live Line

3. Wi-Fi Setup



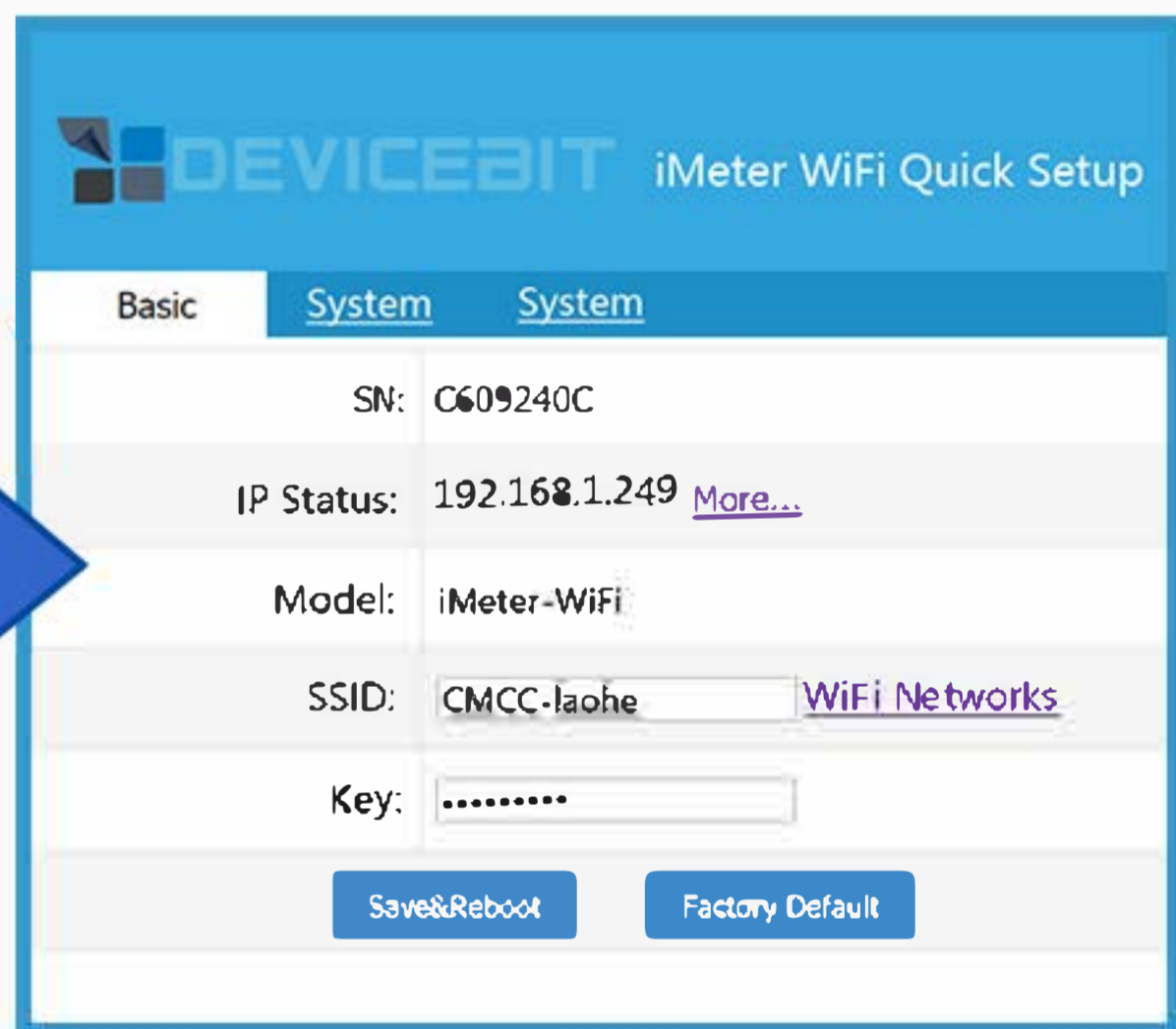
1 Step1

- Use your smart device's WiFi connection setup, connect to the iMeter's network ( show up as iMeter\_xxxxxxx)
- xxxxxxxx is a unique SN of iMeter
- No password required



2 Step2

- Whilst connected to the iMeter's network, open a web browser and navigate to <http://11.11.11.1/>
- Enter the username "admin" and password "admin" and log into the configuration webpage.

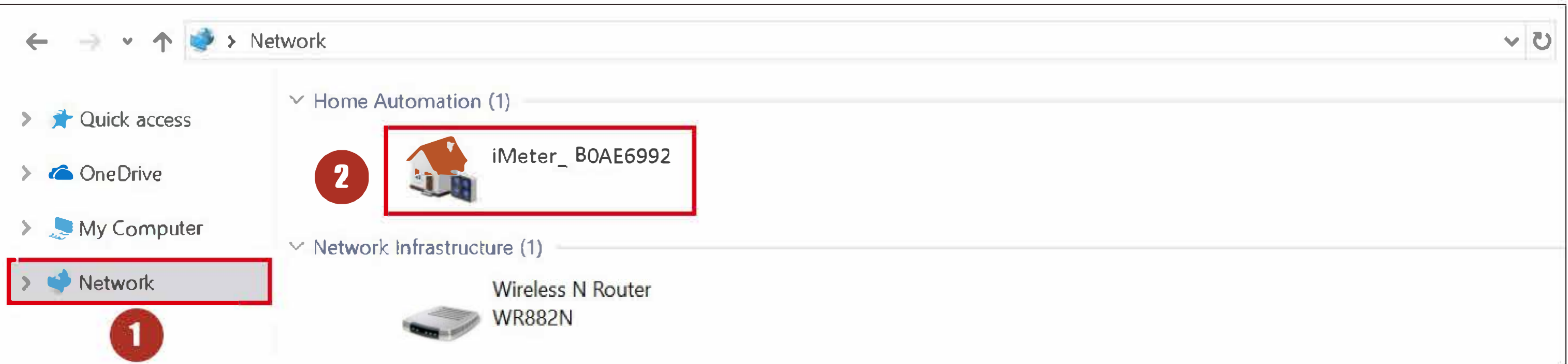


3 Step3

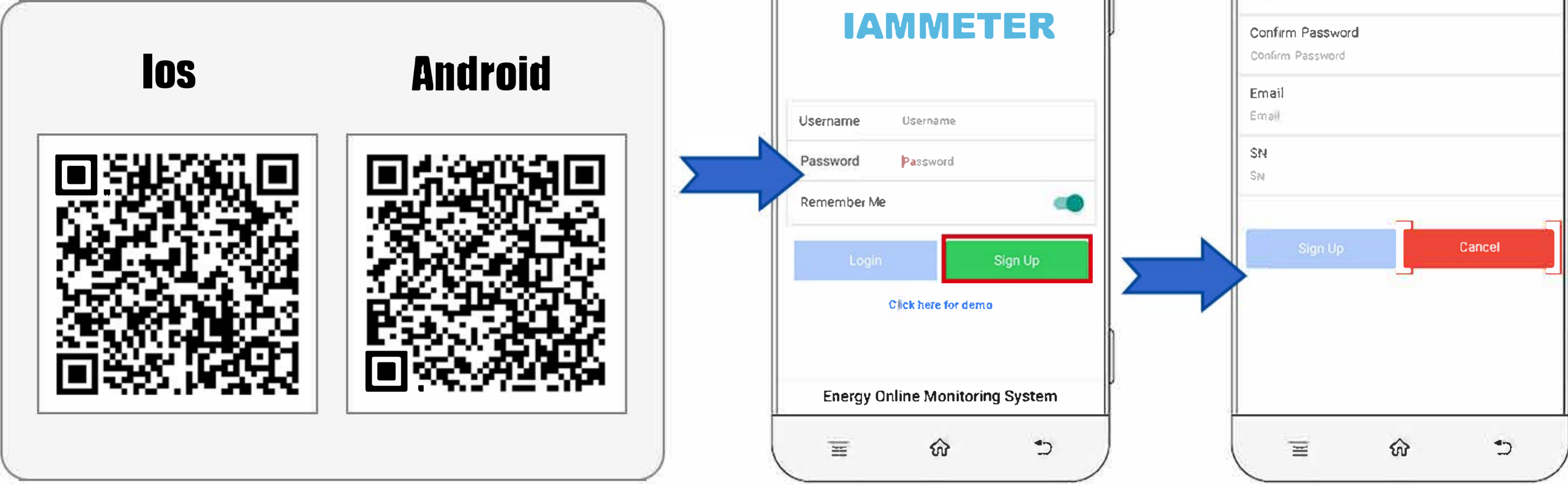
- Click "Wi-Fi Networks" to search and select your home Wi-Fi Network as SSID
- Enter the password for your home Wi-Fi Network as Key.
- Click "Save&Reboot"

Tips

- ① After connected to the your home Wi-Fi network, the iMeter's Wi-Fi access point signal (iMeter\_xxxxxxx) will be hidden for security reason;
- ② You can find your iMeter in the network of your PC which is connected to the same home Wi-Fi network.



# 4.Sign up by mobile App



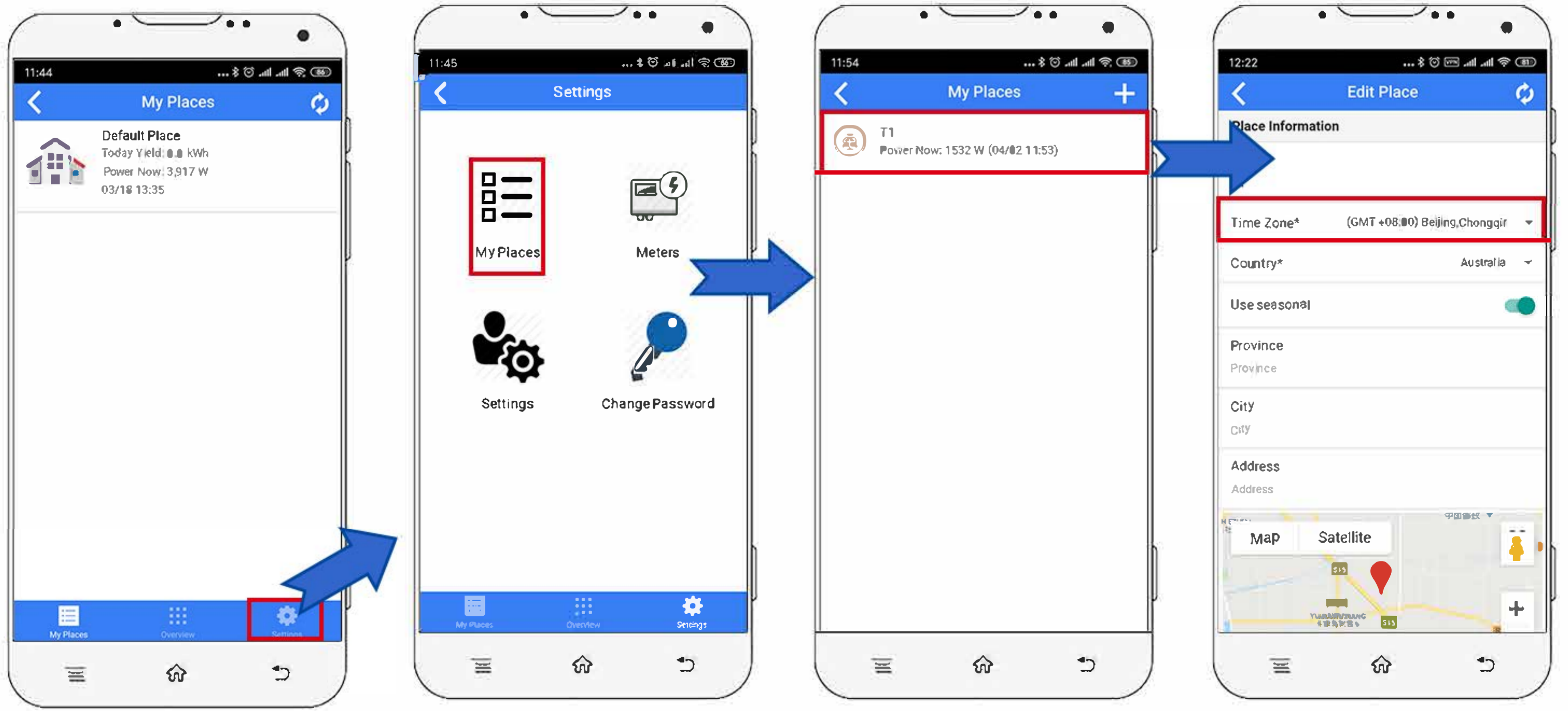
1 Download mobile app

2 Click "Sign Up" to fill in the information.

## Tips

SN: The serial number of your iMeter. You can copy it from the iMeter’s access point signal (iMeter\_XXXXXXX, XXXXXX is the SN).

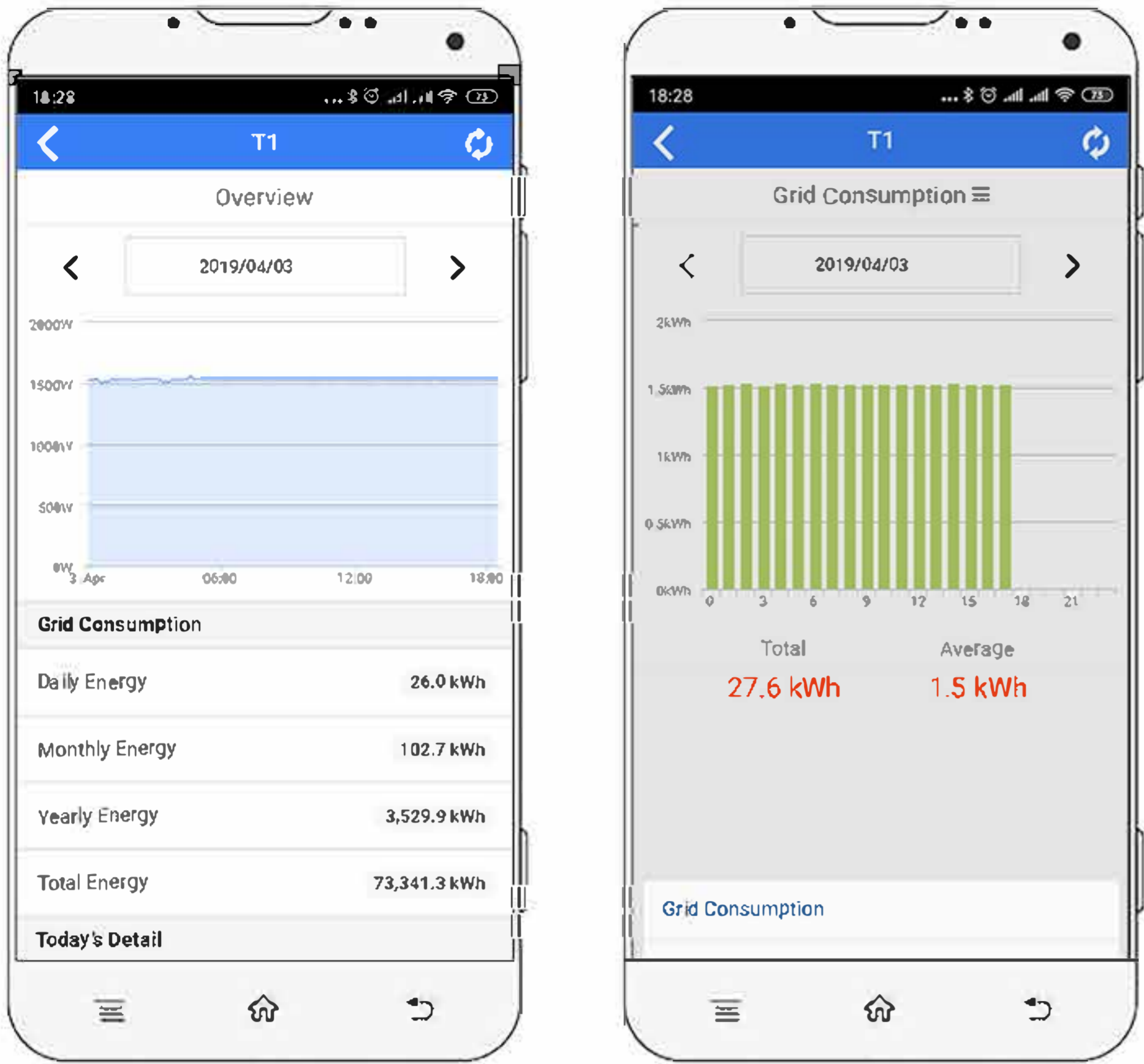
# 5.Set the time zone



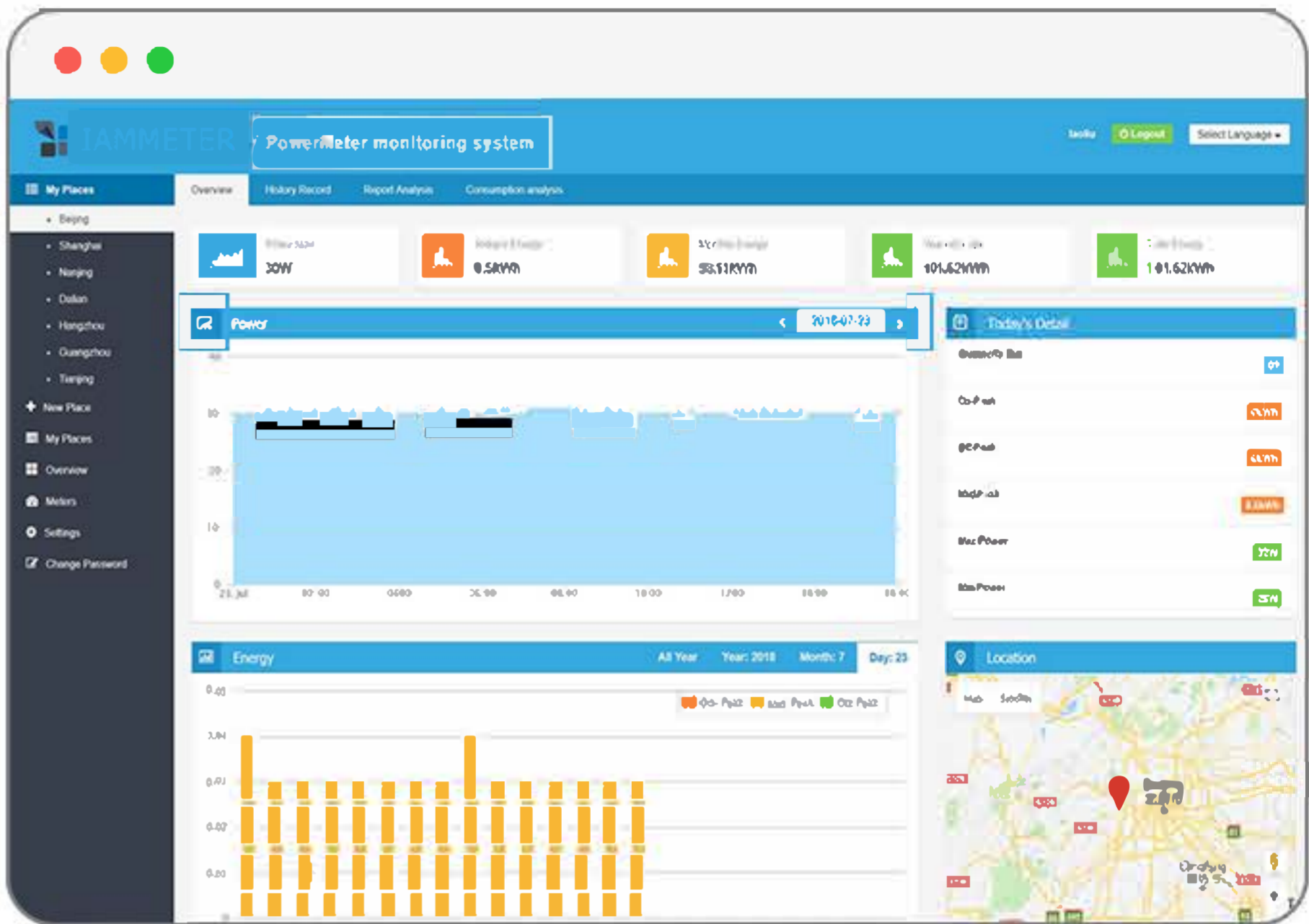
## Tips

Time zone must be set according to your location for correct data display and report on time basis.

# 6.View the Data



1 Data view on app



2 Data view on web portal

## Tips

Please visit <https://www.iammeter.com> to log into the web portal. Same username and password as app.

### FCC Warning

This device complies with part 15 of the FCC rules. Operation is subject to the following two conditions: (1) this device may not cause harmful interference, and (2) this device must accept any interference received, including interference that may cause undesired operation.

Changes or modifications not expressly approved by the party responsible for compliance could void the user's authority to operate the equipment.

NOTE: This equipment has been tested and found to comply with the limits for a Class B digital device, pursuant to part 15 of the FCC Rules. These limits are designed to provide reasonable protection against harmful interference in a residential installation. This equipment generates uses and can radiate radio frequency energy and, if not installed and used in accordance with the instructions, may cause harmful interference to radio communications. However, there is no guarantee that interference will not occur in a particular installation. If this equipment does cause harmful interference to radio or television reception, which can be determined by turning the equipment off and on, the user is encouraged to try to correct the interference by one or more of the following measures:

- Reorient or relocate the receiving antenna.
- Increase the separation between the equipment and receiver.
- Connect the equipment into an outlet on a circuit different from that to which the receiver is connected.
- Consult the dealer or an experienced radio/TV technician for help.

### Radiation Exposure Statement

This equipment complies with FCC radiation exposure limits set forth for an uncontrolled environment. This equipment should be installed and operated with minimum distance 20cm between the radiator and your body.