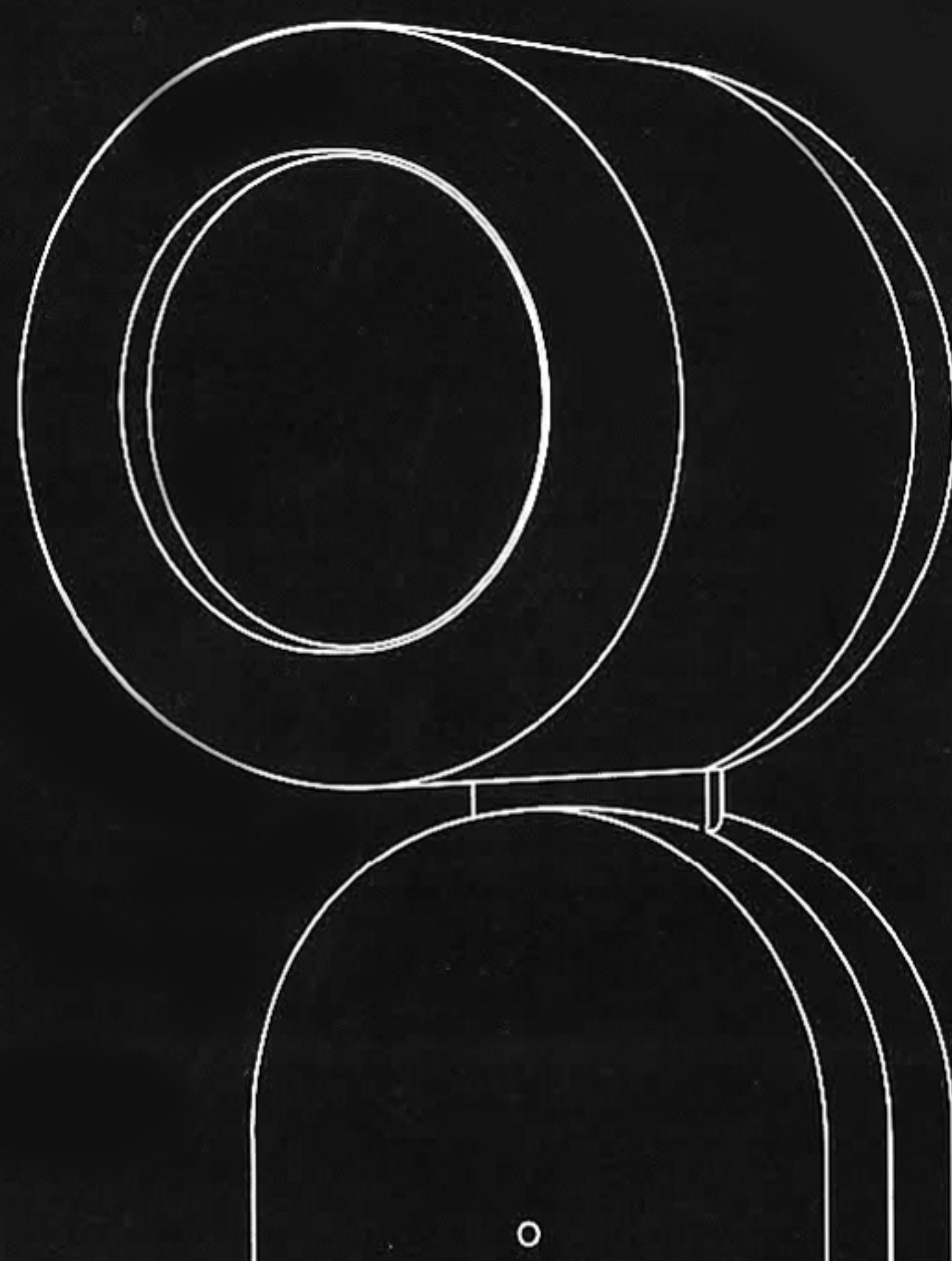


Installation Guide



1 Skinscopy Pro™ App Download



Download APP



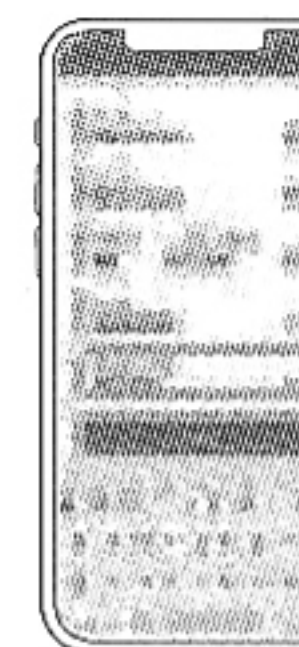
Watch the installation
tutorial video

2 Log In To The Device

- 1 Open the SKINSCOPY Pro™ App installed in your phone



- 2 User Authentication
Phone verification via the user's mobile phone



- 3 User information registration
Enter user information



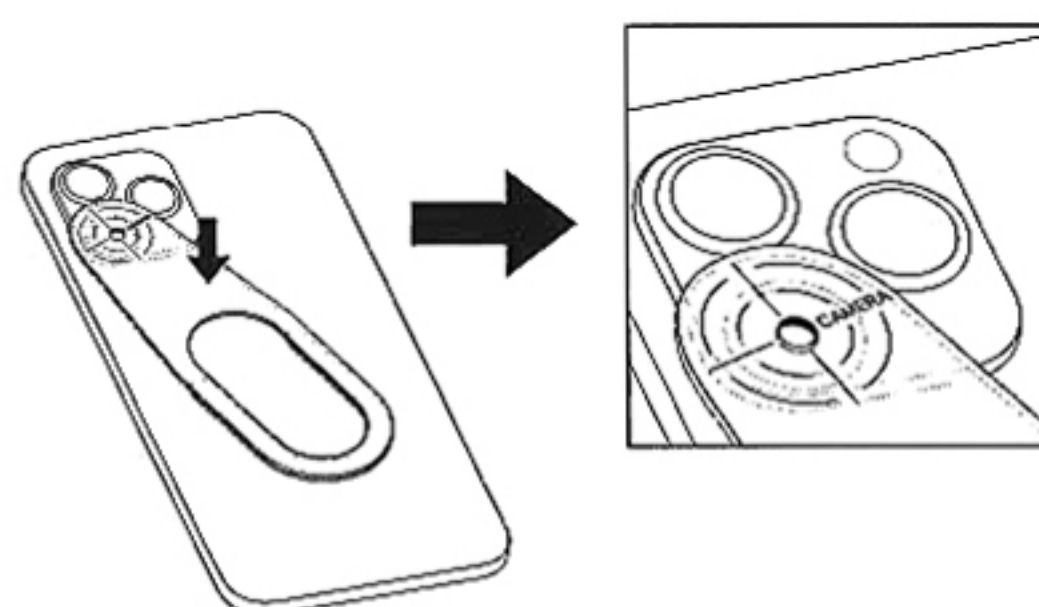
3 Installation Notes

*Supported models: Apple, Android and others

- 1 Among the multiple lenses on the back of the phone, select the main lens
(Use your fingers to block each lens in turn. If the shooting interface fails to view after blocking, it is the main lens.)

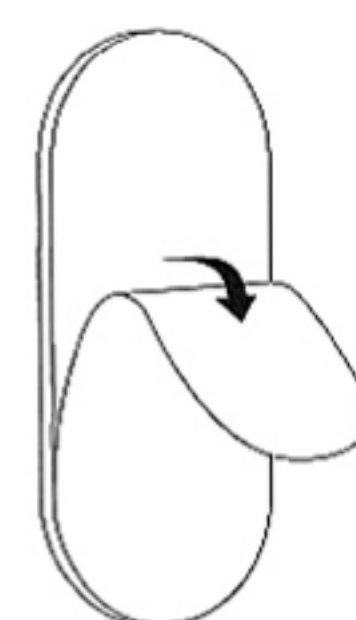


- 2 Align the center of the "cross" scale of the scribed ruler with the center of the lens

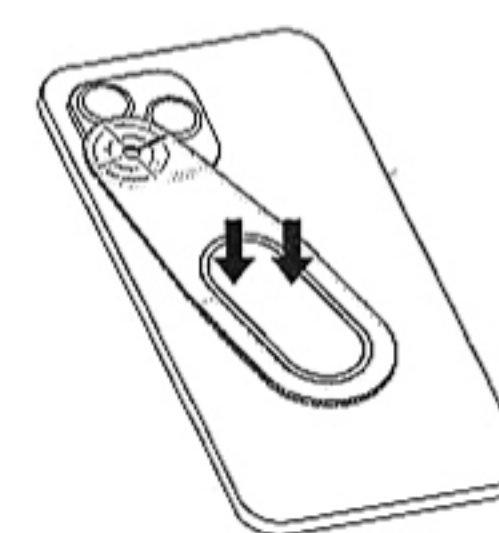


Make sure that the center of the scribing ruler is consistent with the center of the lens. To prevent the end of the scribing ruler from detaching from the phone, stick the scribing ruler after finding the proper position.

- 3 Peel off the sticker on the back of the magnet plate.



- 4 Put the magnet plate into the oval hole of the scribe ruler and press firmly to make it close to the back of the phone.



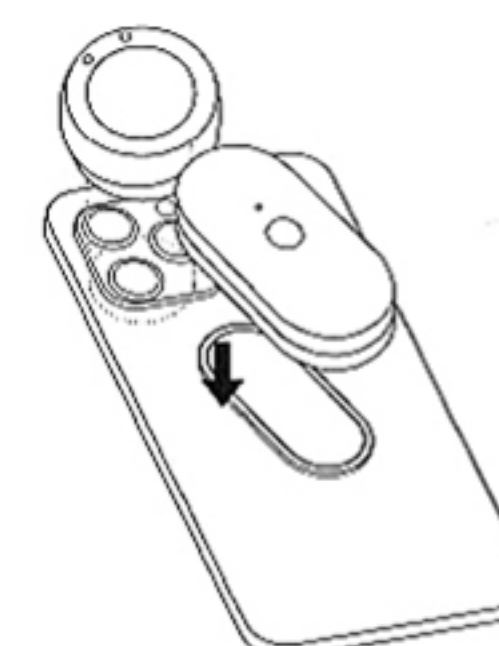
- 5 Tear off the scriber.



- 6 Press the magnet plate again.

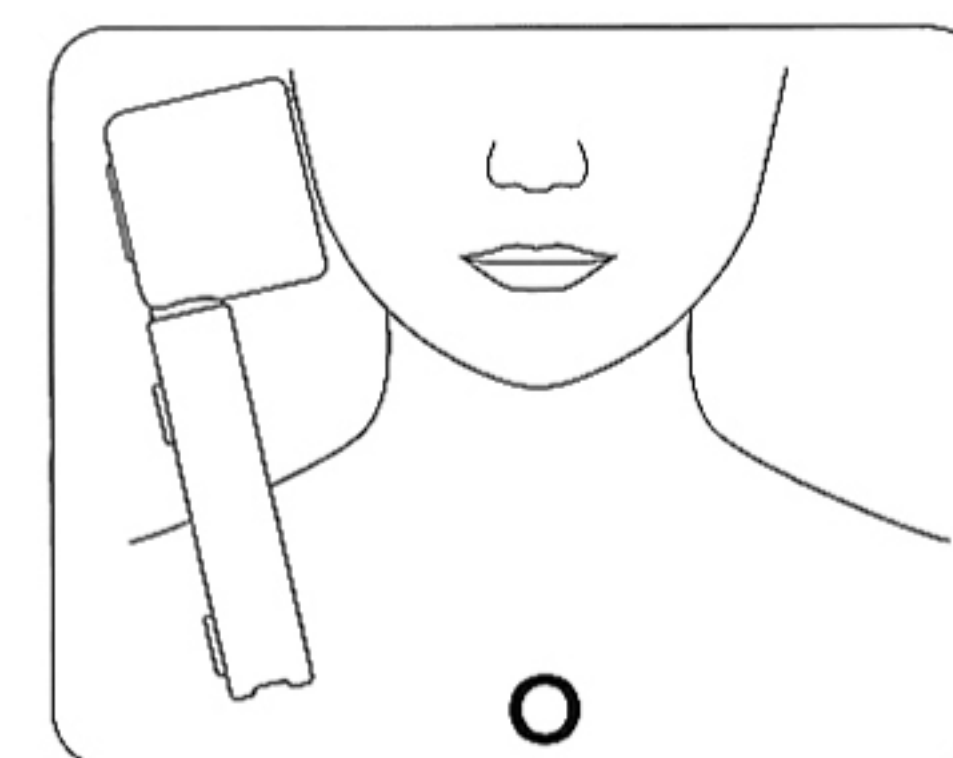
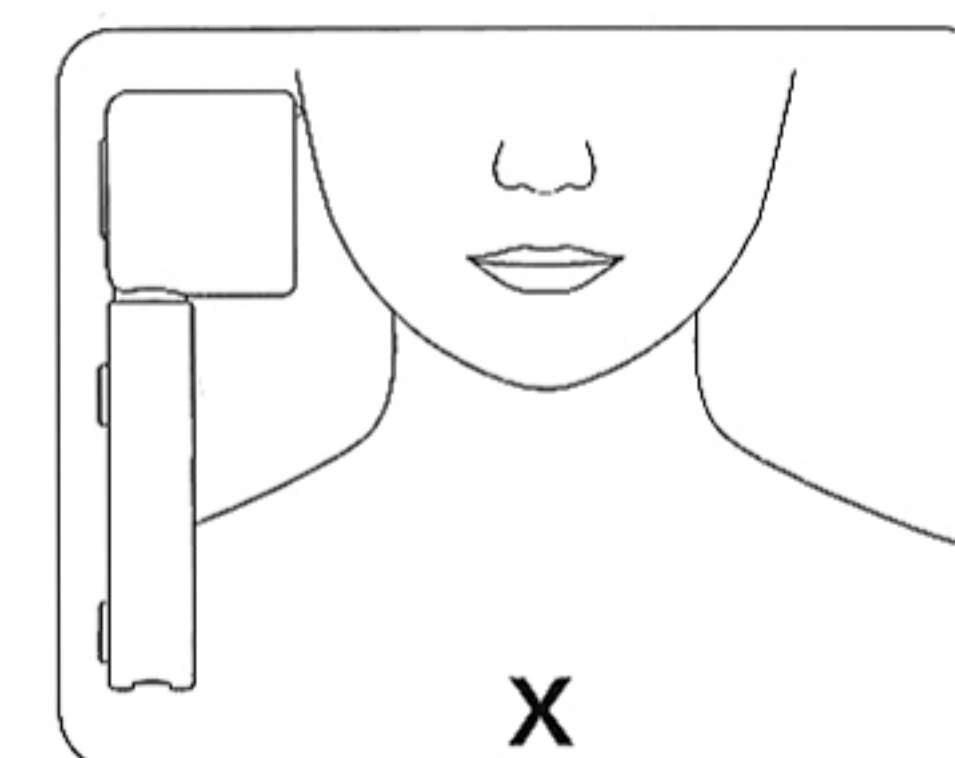


- 7 Just stick the instrument on the magnet plate.



4 Precautions When Shooting

- During the test, if the makeup is too thick or too many cream products are used, accurate test results will not be obtained. Therefore, please use a cotton pad dipped in a small amount of makeup remover to remove the makeup or cream from the area to be tested before the test.
- During the testing process, ensure that the detector and the customer remain stationary.
If there is movement during the shooting process, it will cause the shooting focus to shift and affect the accuracy of the analysis results.
- Make sure that the lens barrel is close to the skin of the part to be tested. If there is a gap between the two, it may cause external light to penetrate and cause deviations in the test results.



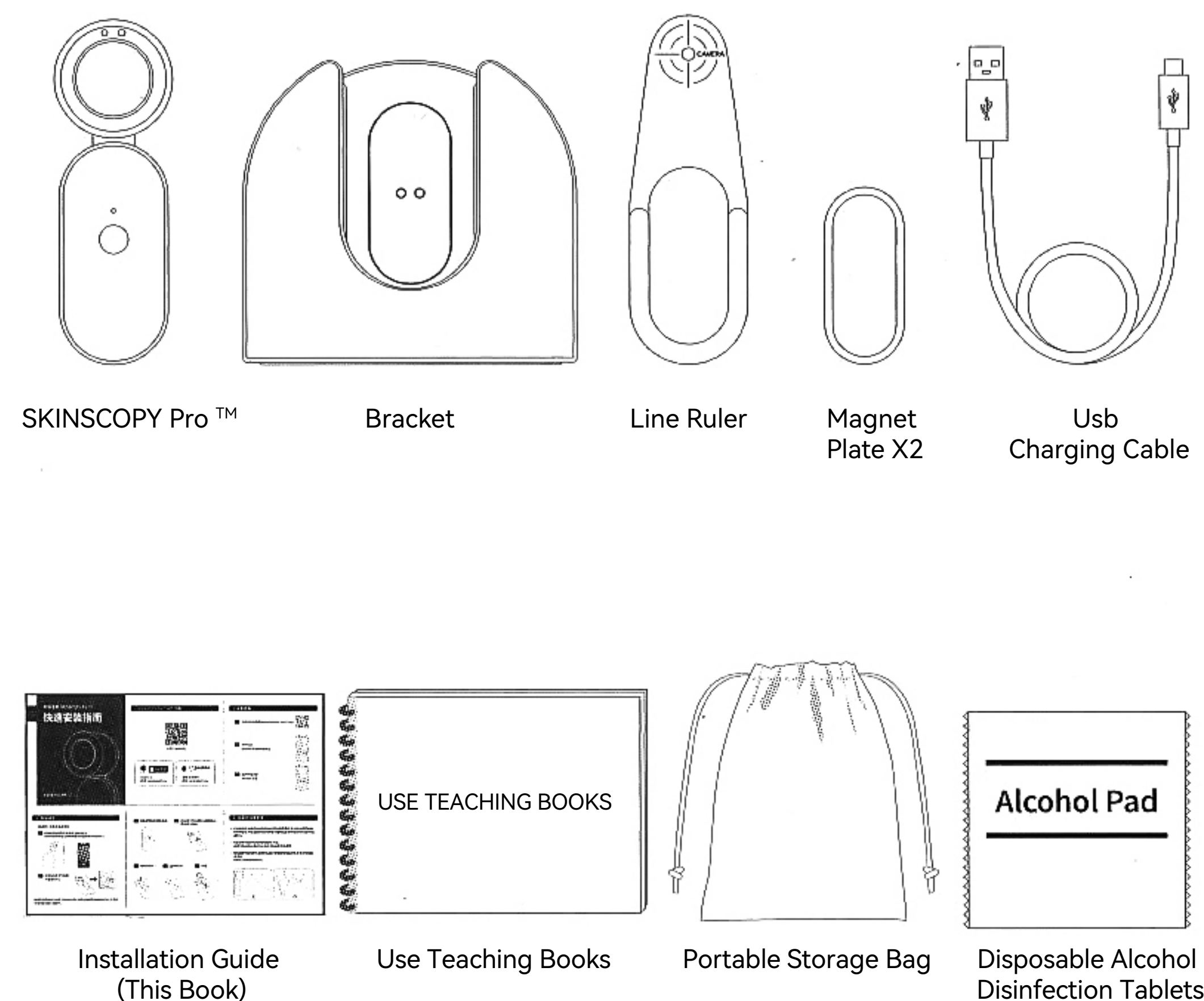
5

Product Parameters

Size	30mmx32mm×96.5mm
Battery	270mA lithium battery
Operating Hours	60 minutes
Charging Time	120 minutes
Standby Time	14 days
Operating Voltage	2.7~3.8V
Input Voltage	DC5V/1A
Image Specifications	Follow the camera specifications of the phone you are using
Material	ABS
Support	ios 7.0 or above, Android 4.3 or above

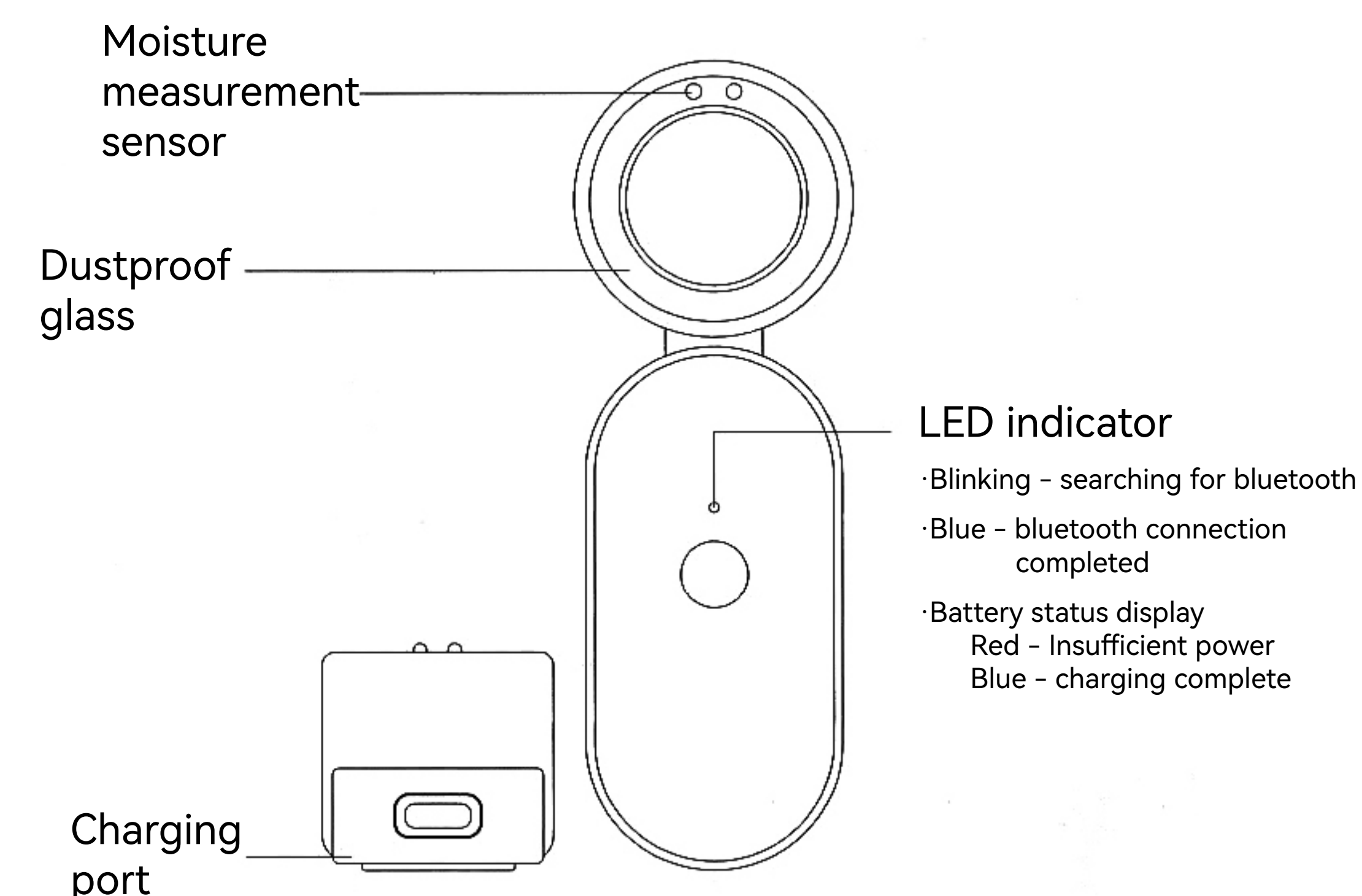
6

Packaging Accessories



7

Equipment Parts Description



8

Maintenance and FAQ

Storage

- When not in use, please put it in a storage bag and keep it in a cool and dry place to prevent sunlight.
- Avoid contact with hard objects to avoid damage. Do not store in a humid environment to avoid affecting product functionality.
- After charging, please cut off the power in time. Continuous charging may cause the battery capacity to decrease.
- When not in use for a long time, please fully discharge the battery every 6 months before charging it fully.
- Since the aging lithium battery cannot be repaired, if the battery is abnormal, please contact our company for a new one in time.
- Do not throw away used batteries at will. In order to avoid polluting the environment, please hand them over to recycling stations.

FAQ

Why can't it be charged?

- Make sure that the grooves of the bracket are in full contact with the metal parts on the instrument. If it still doesn't work, insert the metal part into the slot again.
- Make sure the adapter is connected and the red LED is on.
- When the LED light goes out, make sure that the adapter is firmly plugged into the power outlet. If the LED light is still off after confirming that it is correct, please replace it with another power outlet.

How can I know if the photo is clear?

- When previewing the image on the screen, the skin texture is clear, the light distribution is even, and there is no blur in any part, it is a clear image. Also, do not press hard against the skin during inspection, as it may cause the image to be distorted.

Is the test result correct when wearing makeup?

- Make-up will cause the real skin condition to be unable to be accurately reflected, because make-up will affect the instrument's judgment on skin color and skin texture. We therefore strongly recommend that the device be used on clean skin.

What is the reason for the power failure?

Make sure that the grooves of the device are in full contact with the metal parts on the cord. If it still doesn't work, insert the metal part into the slot again. Make sure the adapter is connected and the red LED is on. When the LED light goes out, make sure the adapter is firmly plugged into the power outlet. If the LED light is still off after confirming that it is correct, please replace it with another power outlet.

Upgrade

If necessary, our company will update the software used by the instrument without specific notice. Please understand.

Technical Support

TEL: (86)2154731210

FAX : (86)21 5439 2863

www.theweina.com



Tik Tok



Weina Class



Weina Product

FCC WARNING

This device complies with part 15 of the FCC Rules. Operation is subject to the following two conditions: (1) this device may not cause harmful interference, and (2) this device must accept any interference received, including interference that may cause undesired operation.

Any changes or modifications not expressly approved by the party responsible for compliance could void the user's authority to operate the equipment.

NOTE: This equipment has been tested and found to comply with the limits for a Class B digital device, pursuant to Part 15 of the FCC Rules. These limits are designed to provide reasonable protection against harmful interference in a residential installation. This equipment generates, uses and can radiate radio frequency energy and, if not installed and used in accordance with the instructions, may cause harmful interference to radio communications. However, there is no guarantee that interference will not occur in a particular installation.

If this equipment does cause harmful interference to radio or television reception, which can be determined by turning the equipment off and on, the user is encouraged to try to correct the interference by one or more of the following measures:

- Reorient or relocate the receiving antenna.
- Increase the separation between the equipment and receiver.
- Connect the equipment into an outlet on a circuit different from that to which the receiver is connected.
- Consult the dealer or an experienced radio/TV technician for help. The device has been evaluated to meet general RF exposure requirement. The device can be used in portable exposure condition without restriction

FCC ID: 2A56T-ISP01